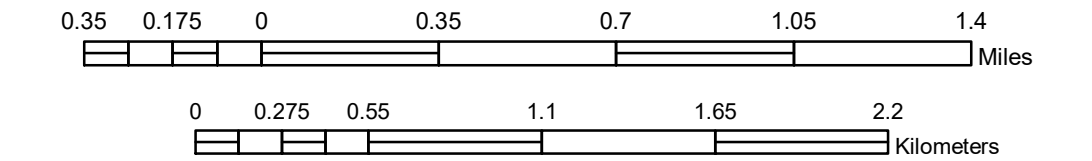


# MUNICIPALITY OF BEMIDJI

PREPARED BY THE  
MINNESOTA DEPARTMENT OF TRANSPORTATION  
OFFICE OF TRANSPORTATION SYSTEM MANAGEMENT

IN COOPERATION WITH  
U.S. DEPARTMENT OF TRANSPORTATION  
FEDERAL HIGHWAY ADMINISTRATION

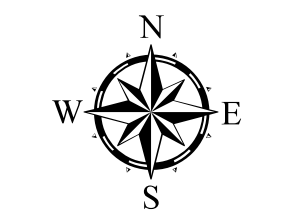
SCALE



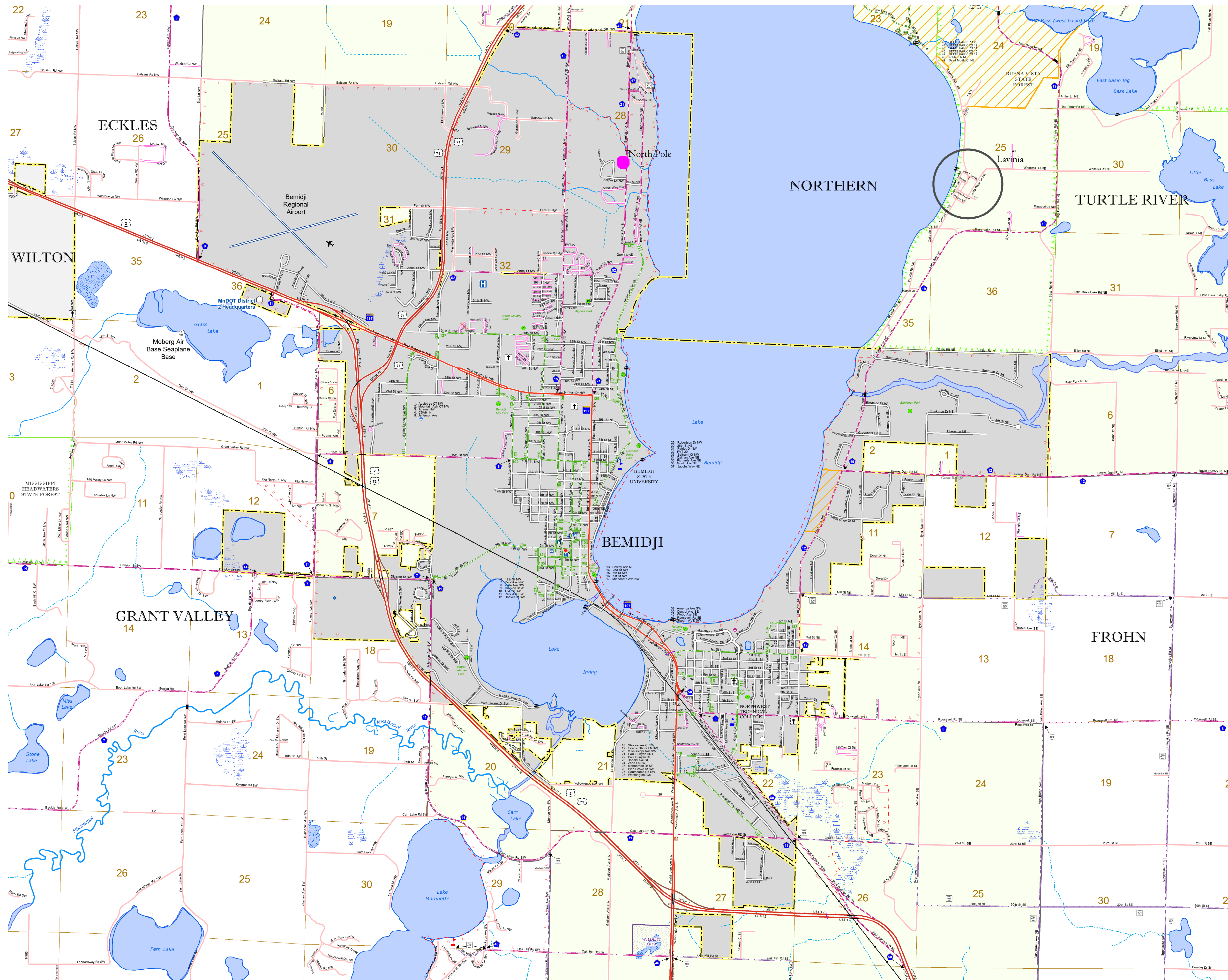
1 in = 2,000 ft

2019

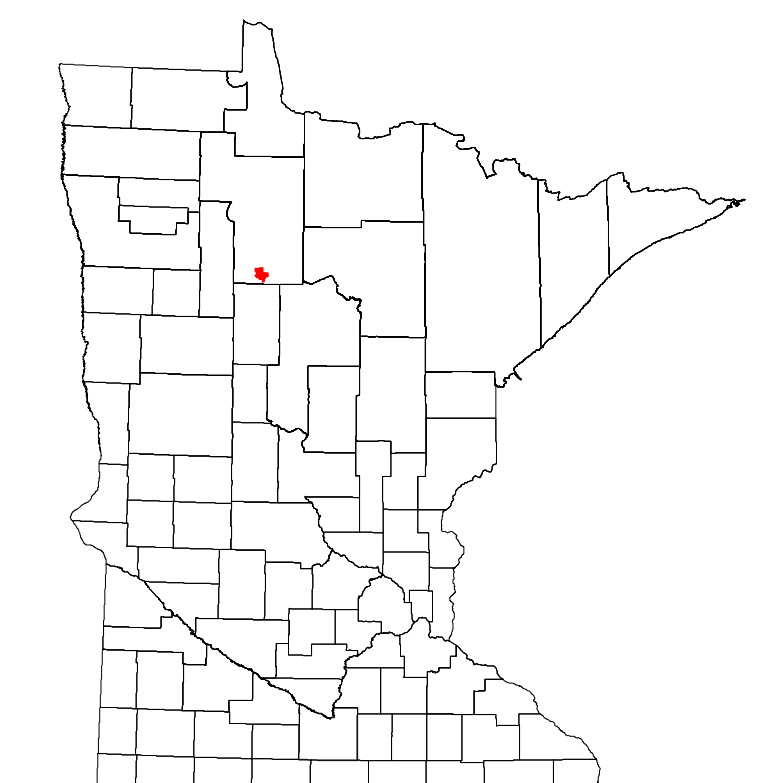
Projection:  
Transverse Mercator  
NAD 1986  
UTM Zone 15



North American Datum  
of 1986



ROAD AND ROADWAY FEATURES	MUNICIPALITY	PUBLIC SERVICE FEATURES
INTERSTATE	RAILROAD AND RAILWAY FEATURES	MINDOT OFFICE
US HIGHWAY	EMPIRE BUILDER STATION (AMTRAK)	MINDOT TRUCK STATION
MN HIGHWAY	NORTHSTAR STATION (COMMUTER)	HIGHWAY PATROL DISTRICT OFFICE
COUNTY STATE AID HIGHWAY	LIGHT RAIL	STATE TRAVEL INFORMATION CENTER
COUNTY ROAD	BLUE LINE	REST AREA (FULL SERVICE)
MUNICIPAL STATE AID STREET	GREEN LINE	REST AREA (VAULT TOLLET)
MUNICIPAL STREET	LONG BRIDGE (100' OR GREATER SPAN)	WAYSIDE (DAILY OR P/T TOLLET)
PRIVATE STREET/ROAD	MAJOR BRIDGE (20' TO 100' SPAN)	LOCAL PARK
TOWNSHIP ROAD	MINOR BRIDGE (5' TO 20' SPAN)	PUBLIC ACCESS POINT
UNORGANIZED TERRITORY ROAD	DAM	FAIRGROUNDS
RAMP OR CONNECTOR	LOCK AND DAM	PORT OF ENTRY
INTERSTATE EXIT	STATE CAPITOL	PARK AND RIDE LOT
GREAT RIVER ROAD	FEDERAL COURTHOUSE	PUBLIC UNIVERSITY/COLLEGE
OTHER ROADS	COUNTY COURTHOUSE	PRIVATE UNIVERSITY/COLLEGE
FRONTAGE	ARMORY	
STATE PARK		
NATIONAL PARK		
NATIONAL MONUMENT		
NATIONAL WILDLIFE STATE GAME		
STATE HISTORICAL MARKER		
CULTURAL FEATURES		
HISTORIC DISTRICT		
HISTORIC SITE		
MONUMENT		
BOUNDARY FEATURES		
TRIBAL LAND		
COUNTY		
MUNICIPALITY		
ADJACENT MUNICIPALITY		
FEDERAL ADJUSTED URBAN AREA (2014)		
MILITARY		
VOYAGEURS NATIONAL PARK		
BOUNDARY WATERS CANOE AREA WILDERNESS		
STATE PARK		
REGIONAL PARK		
NATIONAL FOREST		
NATIONAL AND STATE FOREST		
STATE FOREST		
NATIONAL TRAIL		
WILDLIFE REFUGE AREA		
WILDLIFE MANAGEMENT AREA		
HYDROLOGIC FEATURES		
RIVER OR STREAM (PERENNIAL)		
LAKE, POND OR RESERVOIR		
STREAM (INTERMITTENT)		
DRAINAGE DITCH		
WETLAND		
ISLAND OR LAND		
REGIONAL WATERSHED		



To request information from this document in an alternative format, call 651-366-4718 or 1-800-657-3774 (Greater Minnesota); 711 or 1-800-627-3529 (Minnesota Relay). You may also send an e-mail to ADRequest.dot@state.mn.us. (Please request at least one week in advance.)

LAST EDITED ON 2-25-2020

Population (U.S. Census 2010): 13431