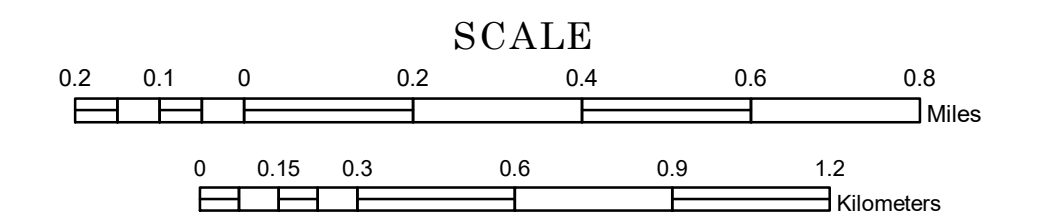


# MUNICIPALITY OF EAST GRAND FORKS

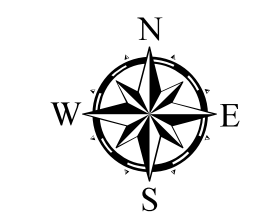
PREPARED BY THE  
MINNESOTA DEPARTMENT OF TRANSPORTATION  
OFFICE OF TRANSPORTATION SYSTEM MANAGEMENT

IN COOPERATION WITH  
U.S. DEPARTMENT OF TRANSPORTATION  
FEDERAL HIGHWAY ADMINISTRATION



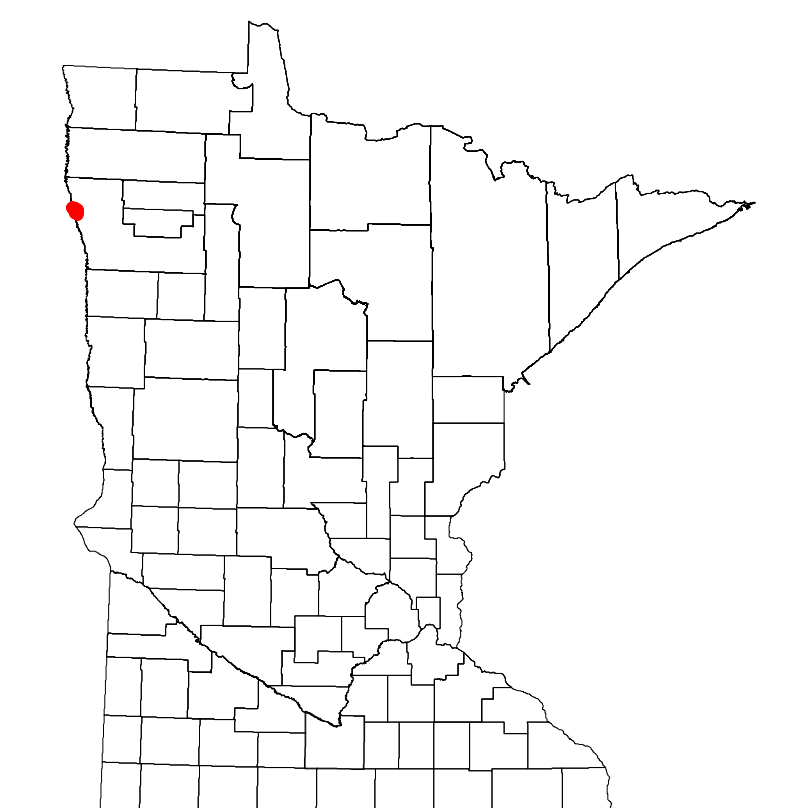
1 in = 1,200 ft  
**2019**

Projection:  
Transverse Mercator  
NAD 1986  
UTM Zone 15

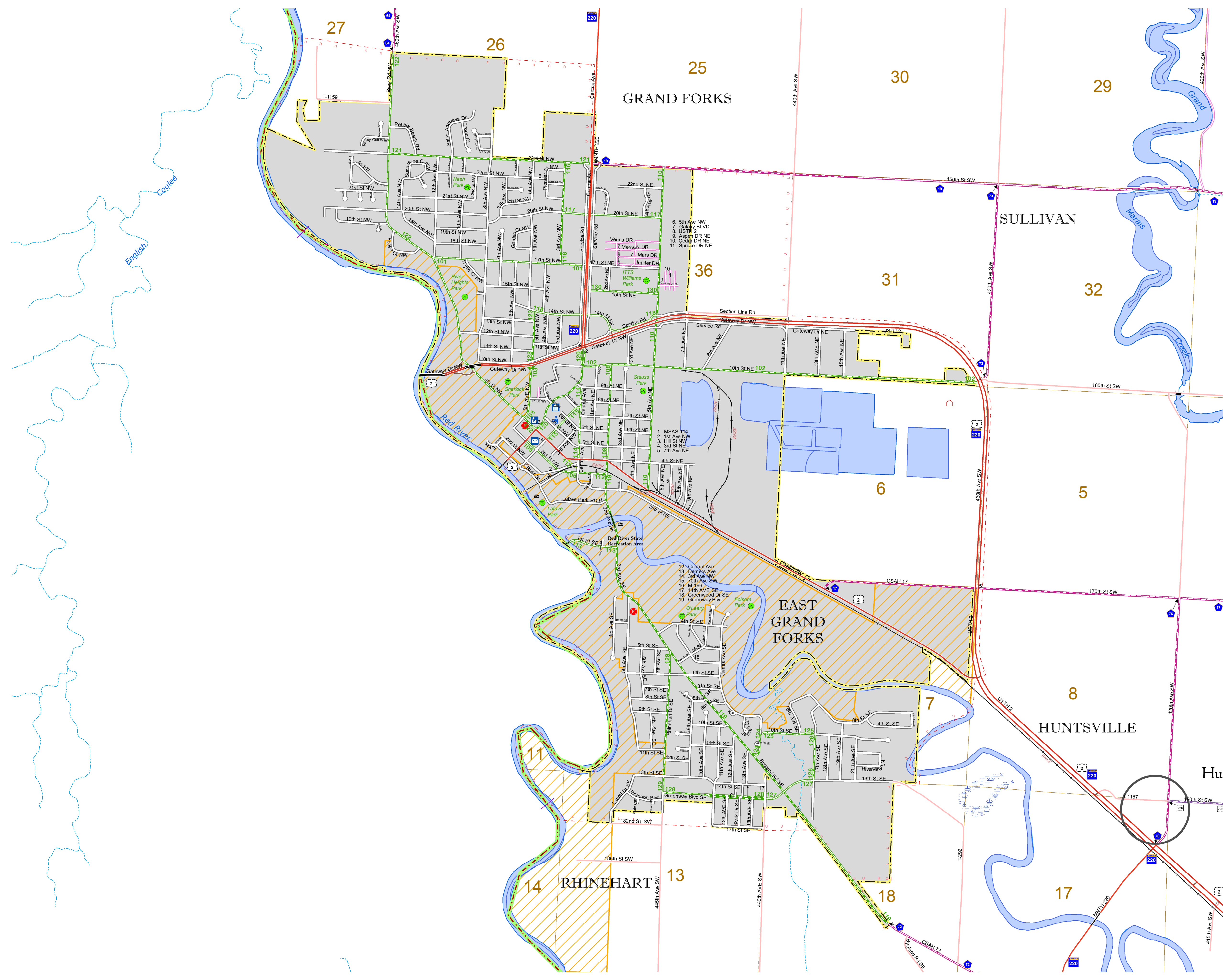


North American Datum  
of 1986

ROAD AND ROADWAY FEATURES	PUBLIC SERVICE FEATURES
INTERSTATE	MINDOT OFFICE
US HIGHWAY	MINDOT TRUCK STATION
MIN HIGHWAY	HIGHWAY PATROL DISTRICT OFFICE
COUNTY STATE AID HIGHWAY	STATE TRAVEL INFORMATION CENTER
COUNTY ROAD	REST AREA (FULL SERVICE)
MUNICIPAL STATE AID STREET	REST AREA (VALET TOILET)
MUNICIPAL STREET	WAYSIDE (VALET OR PIT TOILET)
PRIVATE STREET/ROAD	LOCAL PARK
TOWNSHIP ROAD	PUBLIC ACCESS POINT
UNORGANIZED TERRITORY ROAD	FAIRGROUNDS
RAMP OR CONNECTOR	PORT OF ENTRY
INTERSTATE EXIT	PARK AND RIDE LOT
GREAT RIVER ROAD	PUBLIC UNIVERSITY/COLLEGE
OTHER ROAD	PRIVATE UNIVERSITY/COLLEGE
FRONTAGE ROAD	STATE HISTORICAL MARKER
NON-SERVICE ROAD	CULTURAL FEATURES
MILITARY	HISTORIC DISTRICT
	HISTORIC SITE
	MONUMENT
	BOUNDARY FEATURES
	TRIBAL LAND
	COUNTY
	MUNICIPALITY
	ADJACENT MUNICIPALITY
	FEDERAL ADJUSTED URBAN AREA (2014)
	MILITARY
	VOYAGEURS NATIONAL PARK
	BOUNDARY WATERS CANOE AREA WILDERNESS
	STATE PARK
	REGIONAL PARK
	NATIONAL FOREST
	NATIONAL AND STATE FOREST
	STATE FOREST
	NATIONAL TRAIL
	WILDLIFE REFUGUE AREA
	WILDLIFE MANAGEMENT AREA
	HYDROLOGIC FEATURES
	RIVER OR STREAM (PERMANENT)
	LAKE, POND OR RESERVOIR
	STREAM (INTERMITTENT)
	DRAINAGE DITCH
	WETLAND
	ISLAND OR LAND
	REGIONAL WATERSHED
	CITY CENTERS
	TRIBAL GOVERNMENT CENTER
	CITY CENTER
	LOCALLY KNOWN PLACE
	UNINCORPORATED COMMUNITY



Population (U.S. Census 2010): 8601



To request information from this document in an alternative format, call 651-366-4718 or 1-800-657-3774 (Greater Minnesota); 711 or 1-800-627-3529 (Minnesota Relay). You may also send an e-mail to [ADArequest.dot@state.mn.us](mailto:ADArequest.dot@state.mn.us). (Please request at least one week in advance.)