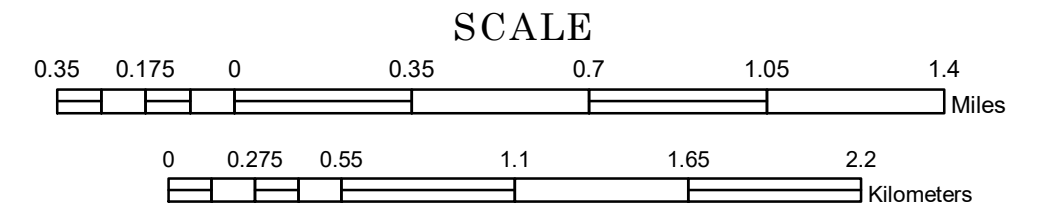


# MUNICIPALITY OF OTSEGO

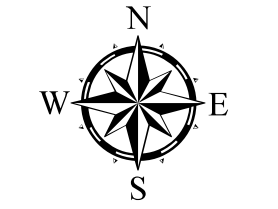
PREPARED BY THE  
MINNESOTA DEPARTMENT OF TRANSPORTATION  
OFFICE OF TRANSPORTATION SYSTEM MANAGEMENT

IN COOPERATION WITH  
U.S. DEPARTMENT OF TRANSPORTATION  
FEDERAL HIGHWAY ADMINISTRATION

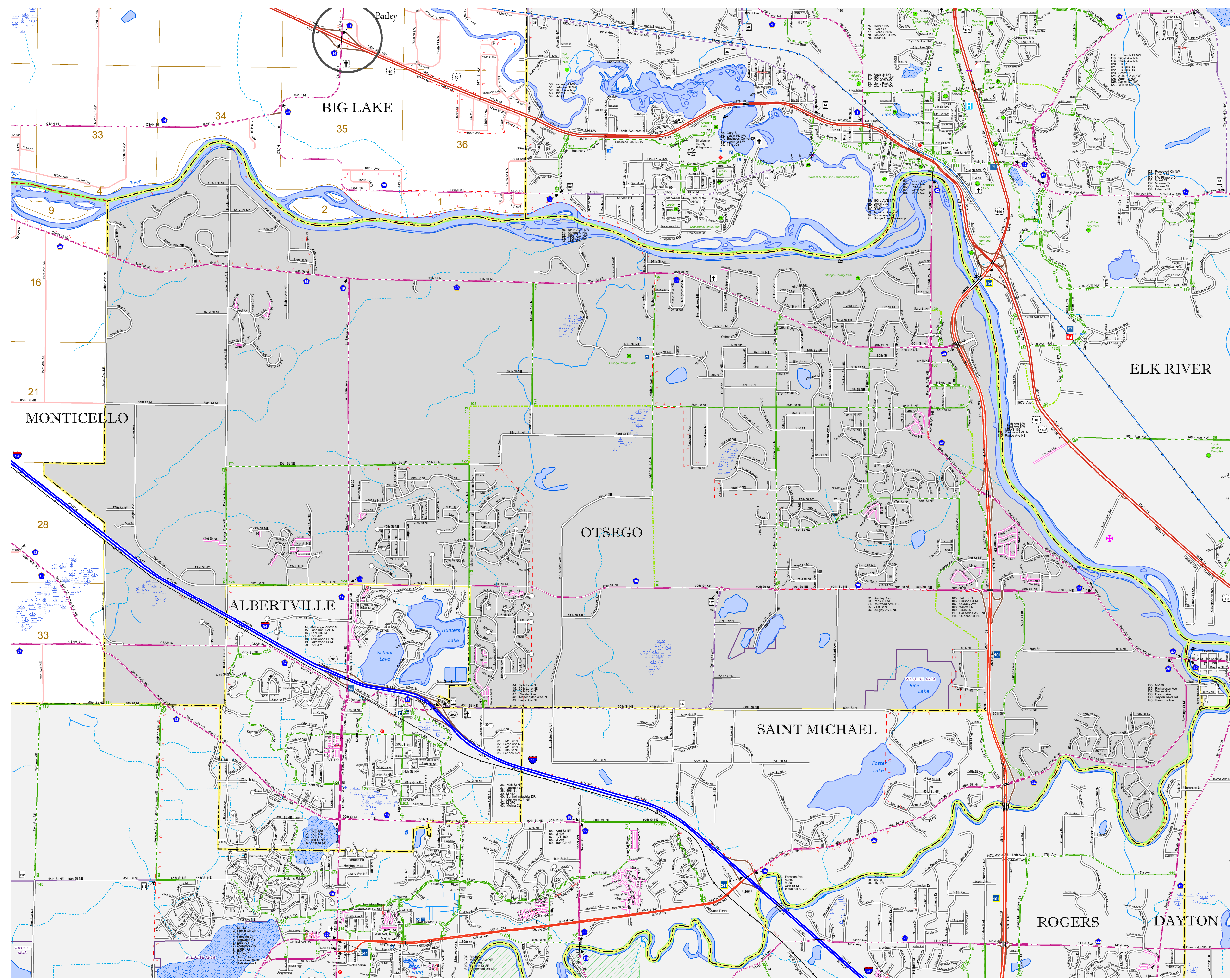


1 in = 2,000 ft  
**2019**

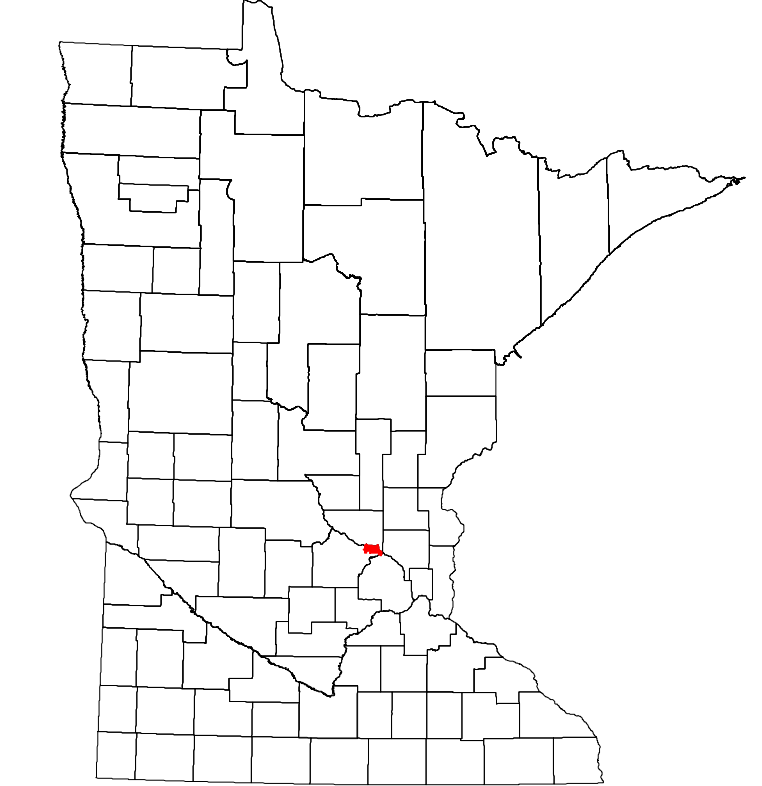
Projection:  
Transverse Mercator  
NAD 1986  
UTM Zone 15



North American Datum  
of 1986



ROAD AND ROADWAY FEATURES		PUBLIC SERVICE FEATURES	
INTERSTATE		MNDOT OFFICE	
US HIGHWAY		MNDOT TRUCK STATION	
MN HIGHWAY		HIGHWAY PATROL DISTRICT OFFICE	
COUNTY STATE AID HIGHWAY		STATE TRAVEL INFORMATION CENTER	
COUNTY ROAD		REST AREA (FULL SERVICE)	
MUNICIPAL STATE AID STREET		REST AREA (WALK TOLLET)	
MUNICIPAL STREET		WAYSIDE (ONLY OR PIT TOLLET)	
PRIVATE STREET/ROAD		LOCAL PARK	
TOWNSHIP ROAD		PUBLIC ACCESS POINT	
UNORGANIZED TERRITORY ROAD		FARMGROUNDS	
RAMP OR CONNECTOR		PORT OF ENTRY	
INTERSTATE EXIT		PARK AND RIDE LOT	
GREAT RIVER ROAD		PUBLIC UNIVERSITY/COLLEGE	
OTHER ROADS		PRIVATE UNIVERSITY/COLLEGE	
FRONTAGE		STATE HISTORICAL MARKER	
INDIAN SERVICE		CULTURAL FEATURES	
MILITARY		HISTORIC DISTRICT	
AVIATION FEATURES		MONUMENT	
COMMERCIAL AIRPORT		BOUNDARY FEATURES	
GENERAL AIRPORT		TRIBAL LAND	
AIRSTRIP		COUNTY	
SEAPLANE		MUNICIPALITY	
AIRPORT RUNWAY		ADJACENT MUNICIPALITY	
RAILWAY		FEDERAL ADJUSTED URBAN AREA (2014)	
EMPIRE BUILDER STATION (AMTRAK)		MILITARY	
NORTHSTAR STATION (COMMUTER)		VOYAGEURS NATIONAL PARK	
LIGHT RAIL		BOUNDARY WATERS CANOE AREA WILDERNESS	
BLUE LINE		STATE PARK	
GREEN LINE		REGIONAL PARK	
LONG BRIDGE (100' OR GREATER SPAN)		NATIONAL FOREST	
MAJOR BRIDGE (20' TO 100' SPAN)		NATIONAL AND STATE FOREST	
MINOR BRIDGE (5' TO 20' SPAN)		STATE FOREST	
DAM		NATIONAL TRAIL	
LOCK AND DAM		WILDLIFE REFUGE AREA	
STATE CAPITOL		WILDLIFE MANAGEMENT AREA	
FEDERAL COURTHOUSE		HYDROLOGIC FEATURES	
COUNTY COURTHOUSE		RIVER OR STREAM (PERMANENT)	
ARMORY		LAKE, POND OR RESERVOIR	
		STREAM (INTERMITTENT)	
		DRAINAGE DITCH	
		WETLAND	
		ISLAND OR LAND	
		REGIONAL WATERSHED	



Population (U.S. Census 2010): 13571

To request information from this document in an alternative format, call 651-366-4718 or 1-800-657-3774 (Greater Minnesota); 711 or 1-800-627-3529 (Minnesota Relay). You may also send an e-mail to [ADArequest.dot@state.mn.us](mailto:ADArequest.dot@state.mn.us). (Please request at least one week in advance.)