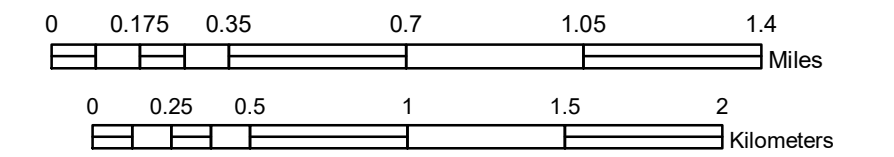


MUNICIPALITY OF SAINT CLOUD

PREPARED BY THE
MINNESOTA DEPARTMENT OF TRANSPORTATION
OFFICE OF TRANSPORTATION SYSTEM MANAGEMENT

IN COOPERATION WITH
U.S. DEPARTMENT OF TRANSPORTATION
FEDERAL HIGHWAY ADMINISTRATION

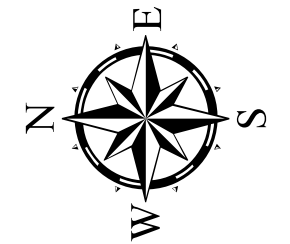
SCALE



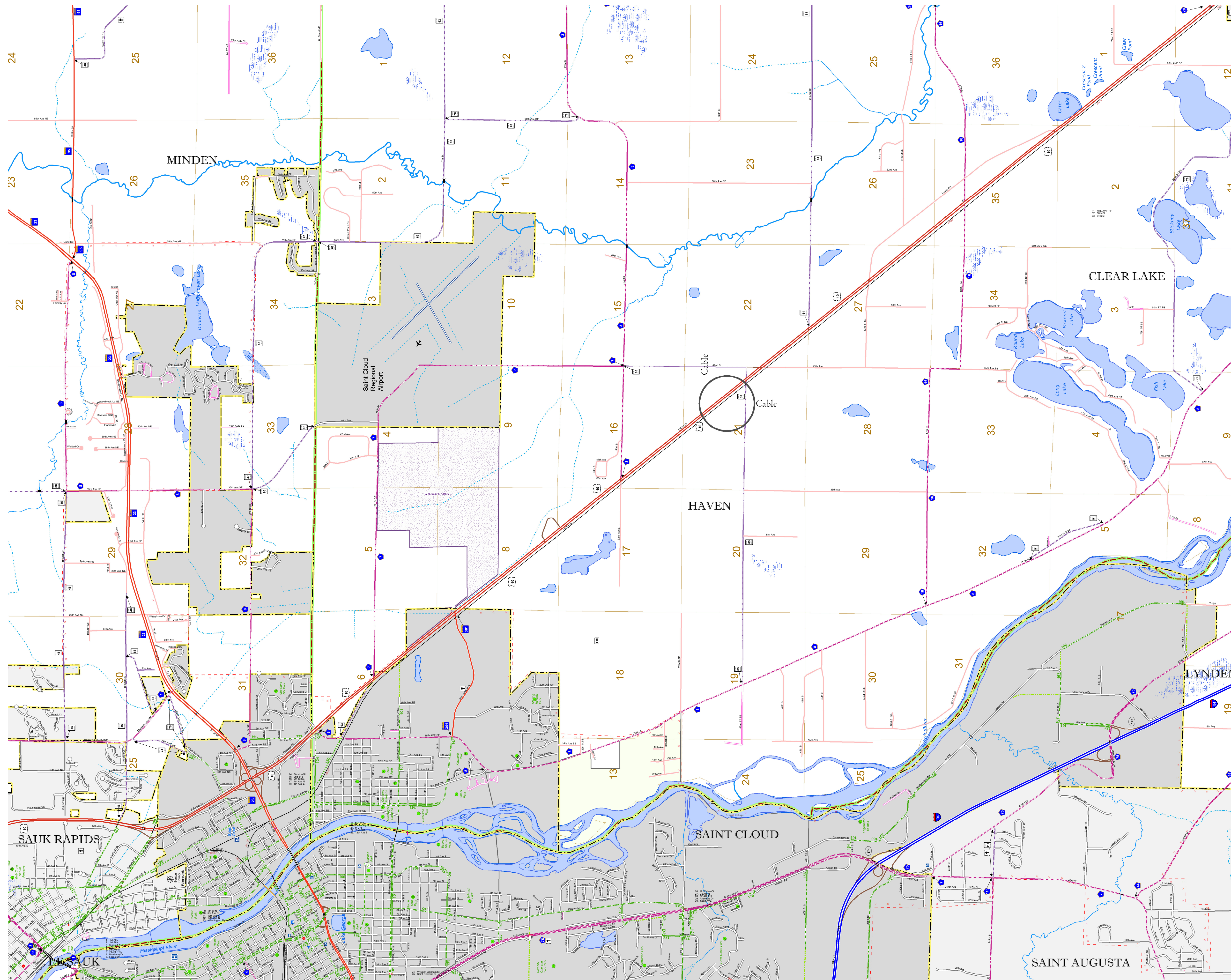
1 in = 2,000 ft

2019

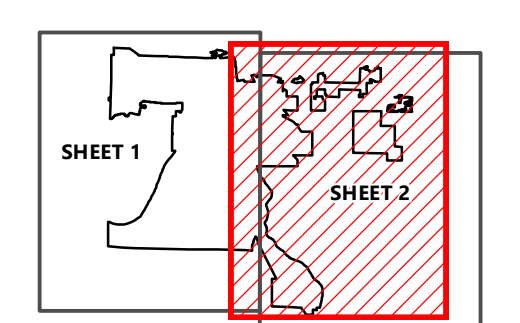
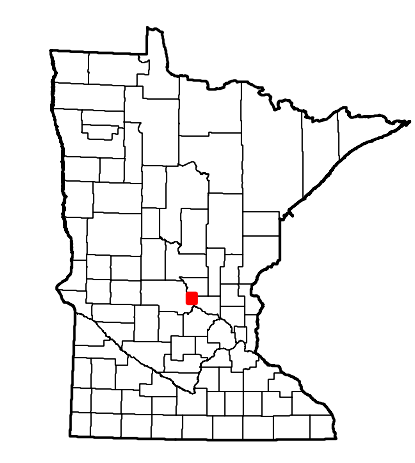
Projection:
Transverse Mercator
NAD 1986
UTM Zone 15



North American Datum
of 1986



| ROAD AND ROADWAY FEATURES | PUBLIC SERVICE FEATURES |
|------------------------------------|--|
| INTERSTATE | MINDOT OFFICE |
| US HIGHWAY | MINDOT TRUCK STATION |
| MN HIGHWAY | HIGHWAY PATROL DISTRICT OFFICE |
| COUNTY STATE AID HIGHWAY | STATE TRAVEL INFORMATION CENTER |
| COUNTY ROAD | REST AREA (FULL SERVICE) |
| MUNICIPAL STATE AID STREET | REST AREA (VAULT OR PIT TOILET) |
| MUNICIPAL STREET | WAYSIDE (VAULT OR PIT TOILET) |
| PRIVATE STREET/ROAD | LOCAL PARK |
| TOWNSHIP ROAD | PUBLIC ACCESS POINT |
| UNORGANIZED TERRITORY ROAD | FAIRGROUNDS |
| RAMP OR CONNECTOR | PORT OF ENTRY |
| INTERSTATE EXIT | PARK AND RIDE LOT |
| GREAT RIVER ROAD | MN STATE COLLEGE AND UNIVERSITY SYSTEM (MNSCU) |
| OTHER ROADS | UNIVERSITY OF MN SYSTEM |
| FRONTAGE | CULTURAL FEATURES |
| INDIAN SERVICE | STATE HISTORICAL MARKER |
| NATIONAL PARK | HISTORIC DISTRICT |
| NATIONAL MONUMENT | HISTORIC SITE |
| NATIONAL FOREST | MONUMENT |
| NATIONAL WILDLIFE | TRIBAL LAND |
| STATE GAME | COUNTY |
| AVIATION FEATURES | MUNICIPALITY |
| COMMERCIAL AIRPORT | ADJACENT MUNICIPALITY |
| GENERAL AIRPORT | FEDERAL ADJUSTED URBAN AREA (2014) |
| AIRSTRIP | MILITARY |
| SEAPLANE | VOYAGERS NATIONAL PARK |
| AIRPORT RUNWAY | BOUNDARY WATERS CANOE AREA WILDERNESS |
| RAILROAD AND RAILWAY FEATURES | STATE PARK |
| EMPIRE BUILDER STATION (AMTRAK) | REGIONAL PARK |
| NORTHSTAR STATION (COMMUTER) | NATIONAL FOREST |
| LIGHT RAIL | NATIONAL AND STATE FOREST |
| BLUE LINE | STATE FOREST |
| GREEN LINE | NATIONAL TRAIL |
| INFRASTRUCTURE FEATURES | WILDLIFE REFUGUE AREA |
| LONG BRIDGE (500' OR GREATER SPAN) | WILDLIFE MANAGEMENT AREA |
| MAJOR BRIDGE (25' TO 500' SPAN) | HYDROLOGIC FEATURES |
| MINOR BRIDGE (8' TO 25' SPAN) | RIVER OR STREAM (PENNARIVE) |
| DAM | LAKE, POND OR RESERVOIR |
| LOCK AND DAM | STREAM (INTERMITTENT) |
| PUBLIC FACILITIES | DRAINAGE DITCH |
| STATE CAPITOL | WETLAND |
| FEDERAL COURTHOUSE | ISLAND OR LAND |
| COUNTY COURTHOUSE | REGIONAL WATERSHED |
| ARMORY | |
| CITY CENTERS | |
| TRIBAL GOVERNMENT CENTER | |
| CITY CENTER | |
| LOCALLY INCORPORATED PLACE | |
| UNINCORPORATED COMMUNITY | |



To request information from this document in an alternative format, call 651-366-4718 or 1-800-657-3774 (Greater Minnesota); 711 or 1-800-627-3529 (Minnesota Relay). You may also send an e-mail to ADArequest.dot@state.mn.us. (Please request at least one week in advance.)

Population (U.S. Census 2010): 65,842