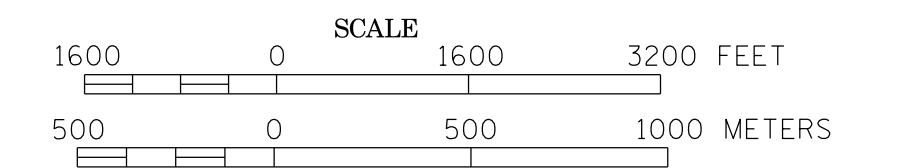
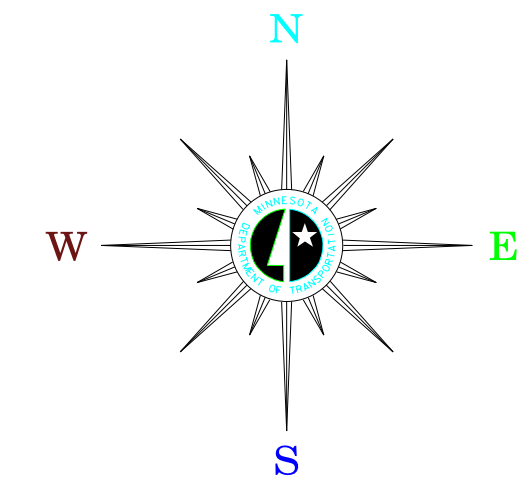


MUNICIPALITY OF  
**CAMBRIDGE**

PREPARED BY THE  
MINNESOTA DEPARTMENT OF TRANSPORTATION  
OFFICE OF TRANSPORTATION SYSTEM MANAGEMENT  
IN COOPERATION WITH  
U.S. DEPARTMENT OF TRANSPORTATION  
FEDERAL HIGHWAY ADMINISTRATION

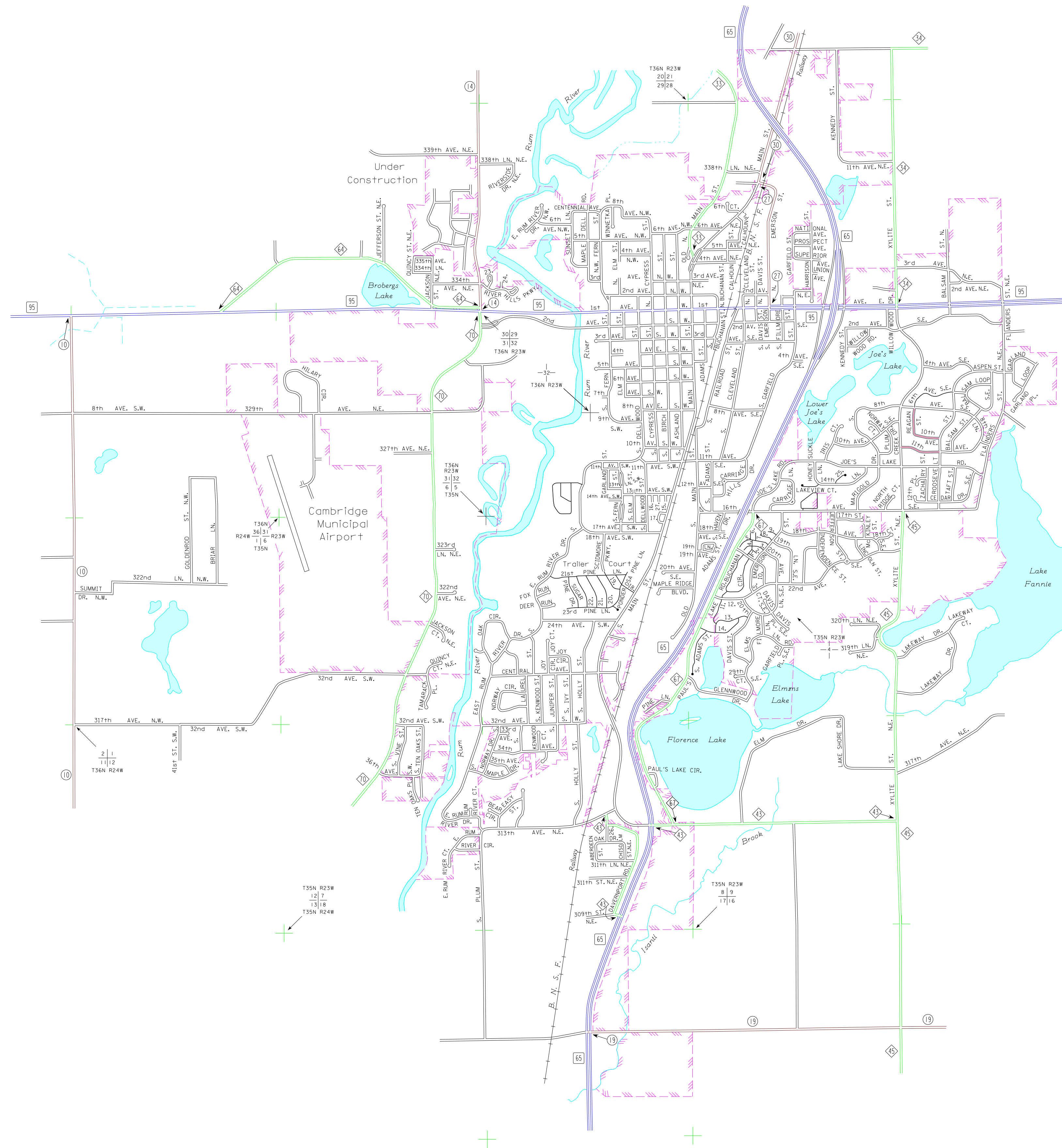


**2015**  
BASIC DATA - 2013



**LEGEND**

- INTERSTATE TRUNK HIGHWAY..... (15)
- U.S. TRUNK HIGHWAY..... (10)
- STATE TRUNK HIGHWAY..... (55)
- COUNTY STATE AID HIGHWAY..... (25)
- COUNTY ROAD..... (15)
- CORPORATE LIMITS.....
- PUBLIC ROAD .....
- PRIVATE ROAD .....



1. S. GARFIELD ST.
2. 205 1/2 LN. S.E.
3. 20TH LN. S.E.
4. S. CLEVELAND LN.
5. 18 1/2 LN. S.E.
6. S. SUTHERLAND LN.
7. S. DAVIS LN.
8. 19TH LN. S.E.
9. 18 1/2 LN. S.E.
10. 22ND AVE. S.E.
11. BUCHANAN ST.
12. NELSON DR. S.E.
13. 24TH AVE. S.E.
14. CENTRAL AVE.
15. ASHLAND PL.
16. CYPRESS PL.
17. HORSESHOE DR.
18. PINE VILLAGE DR.
19. SCOTCH PINE DR.
20. JACK PINE DR.
21. RED PINE DR.
22. RIVER HILLS CT.
23. RIVER HILLS PL.
24. WHITE PINE DR.
25. JASMINE CT.
26. BALTIMORE ST. N.E.
27. BIRCH PL.