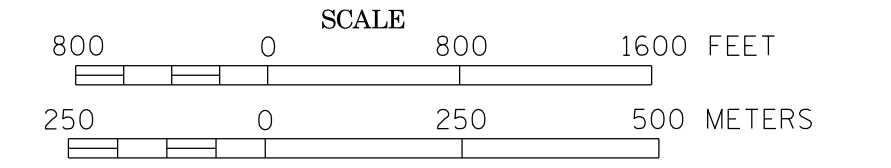
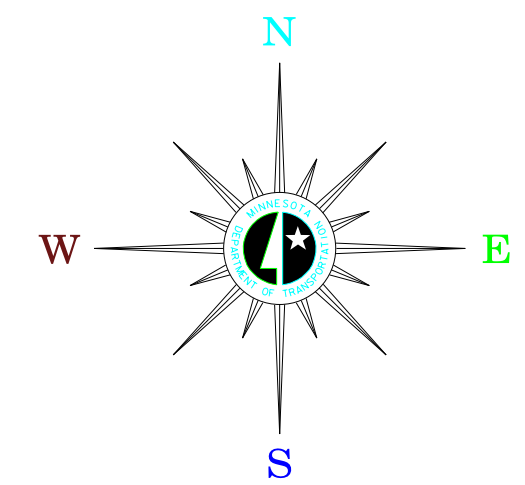


MUNICIPALITY OF
JORDAN

PREPARED BY THE
MINNESOTA DEPARTMENT OF TRANSPORTATION
OFFICE OF TRANSPORTATION SYSTEM MANAGEMENT
IN COOPERATION WITH
U.S. DEPARTMENT OF TRANSPORTATION
FEDERAL HIGHWAY ADMINISTRATION

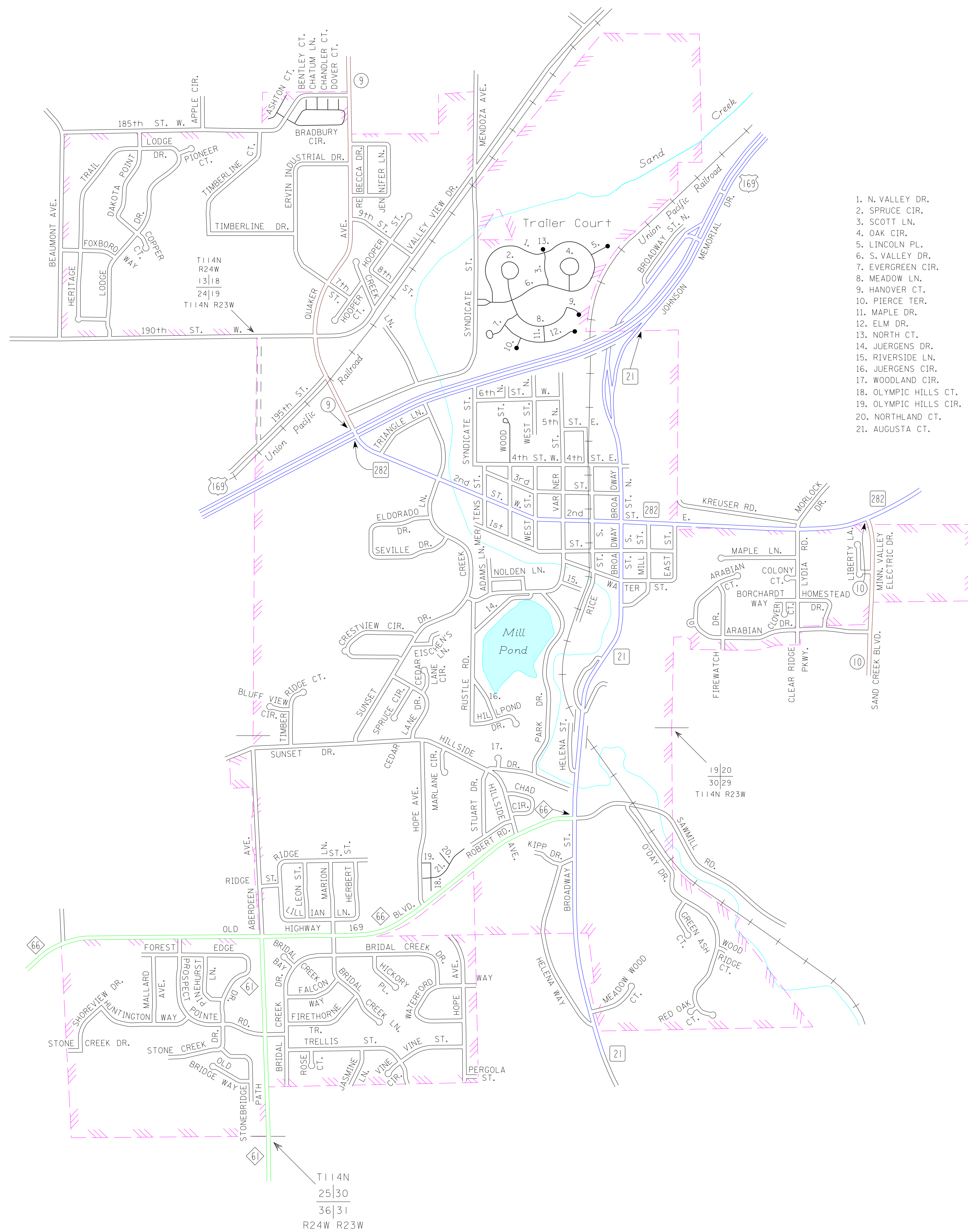


2015
BASIC DATA - 2013



LEGEND

- INTERSTATE TRUNK HIGHWAY..... (I-35)
- U.S. TRUNK HIGHWAY..... (169)
- STATE TRUNK HIGHWAY..... (55)
- COUNTY STATE AID HIGHWAY..... (23)
- COUNTY ROAD..... (66)
- CORPORATE LIMITS.....
- PUBLIC ROAD.....
- PRIVATE ROAD.....



1. N. VALLEY DR.
2. SPRUCE CIR.
3. SCOTT LN.
4. OAK CIR.
5. LINCOLN PL.
6. S. VALLEY DR.
7. EVERGREEN CIR.
8. MEADOW LN.
9. HANOVER CT.
10. PIERCE TER.
11. MAPLE DR.
12. ELM DR.
13. NORTH CT.
14. JUERGENS DR.
15. RIVERSIDE LN.
16. JUERGENS CIR.
17. WOODLAND CIR.
18. OLYMPIC HILLS CT.
19. OLYMPIC HILLS CIR.
20. NORTHLAND CT.
21. AUGUSTA CT.

To request information from this document in an alternative format, call 651-366-4718 or 1-800-657-3774 (Greater Minnesota); 711 or 1-800-627-3529 (Minnesota Relay). You may also send an e-mail to ADArequest.dot@state.mn.us. (Please request at least one week in advance).