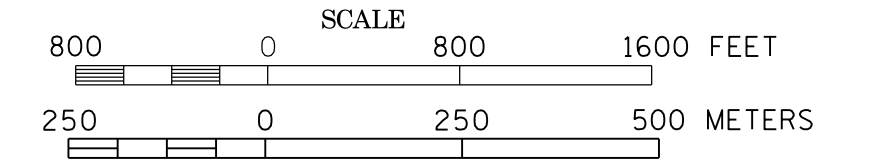
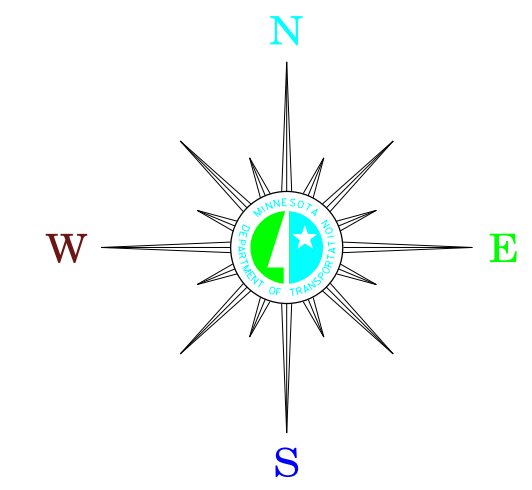


MUNICIPALITIES OF
BELTRAMI CO.

PREPARED BY THE
MINNESOTA DEPARTMENT OF TRANSPORTATION
OFFICE OF TRANSPORTATION SYSTEM MANAGEMENT
IN COOPERATION WITH
U.S. DEPARTMENT OF TRANSPORTATION
FEDERAL HIGHWAY ADMINISTRATION

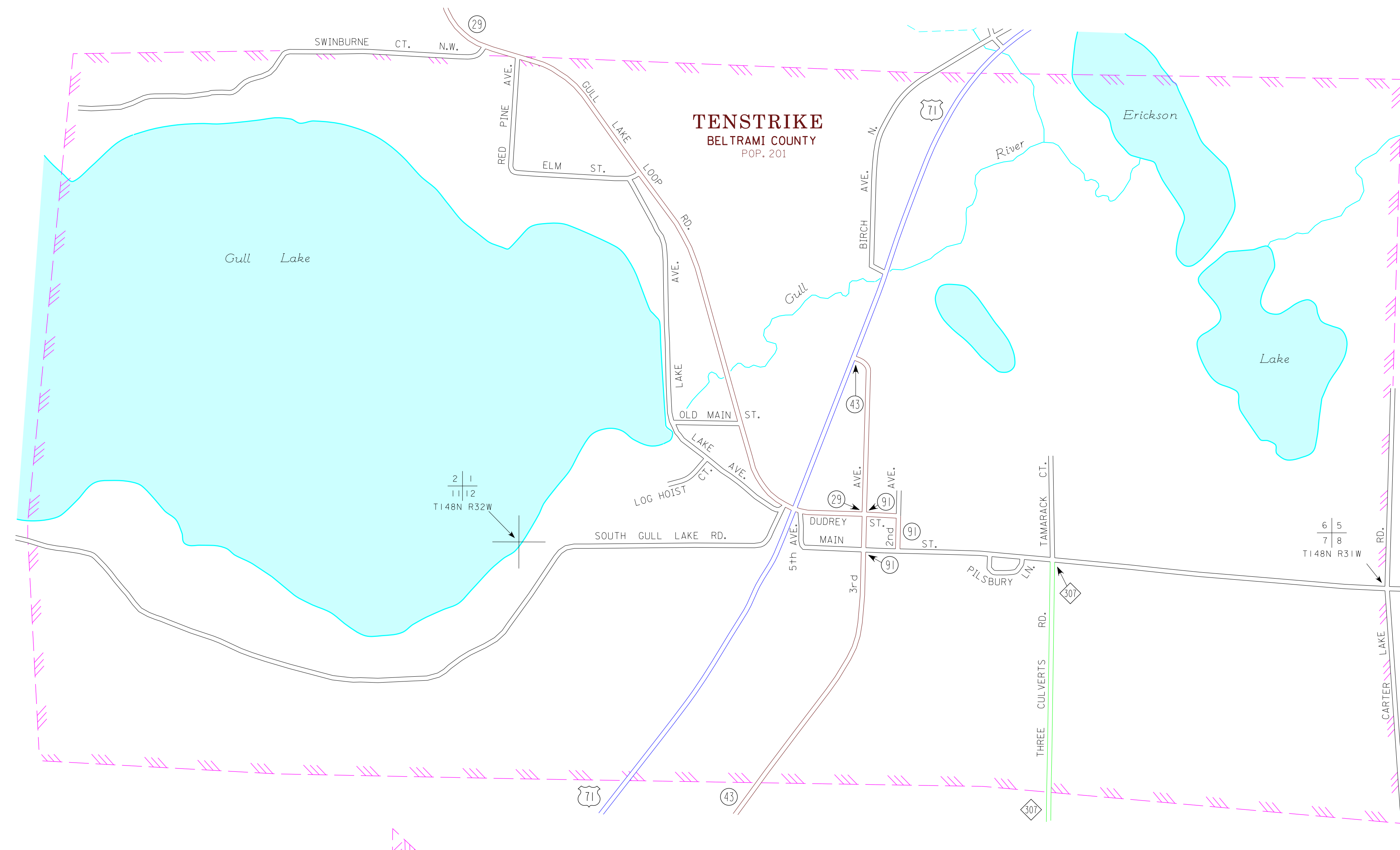


2015
BASIC DATA - 2013

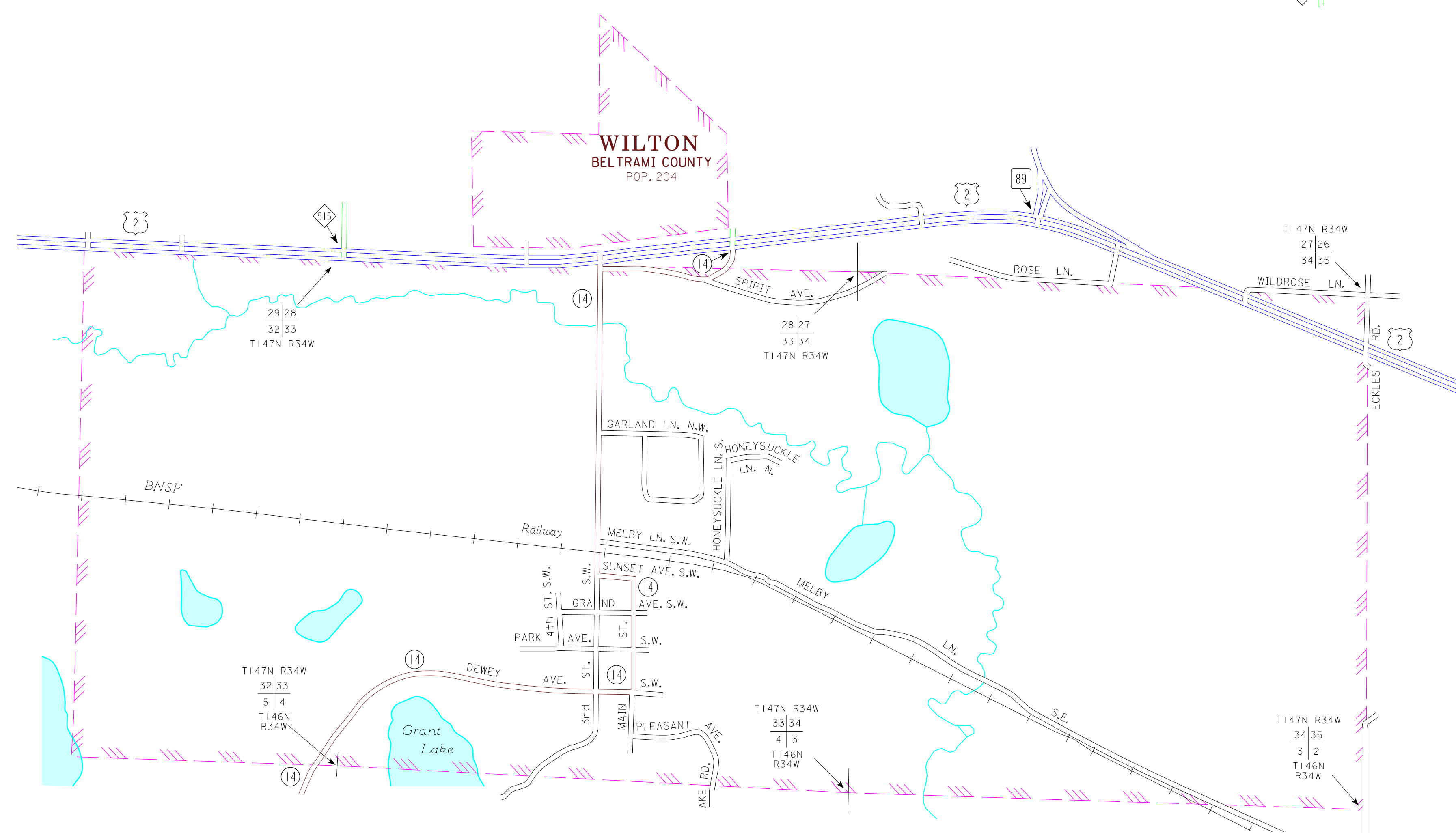
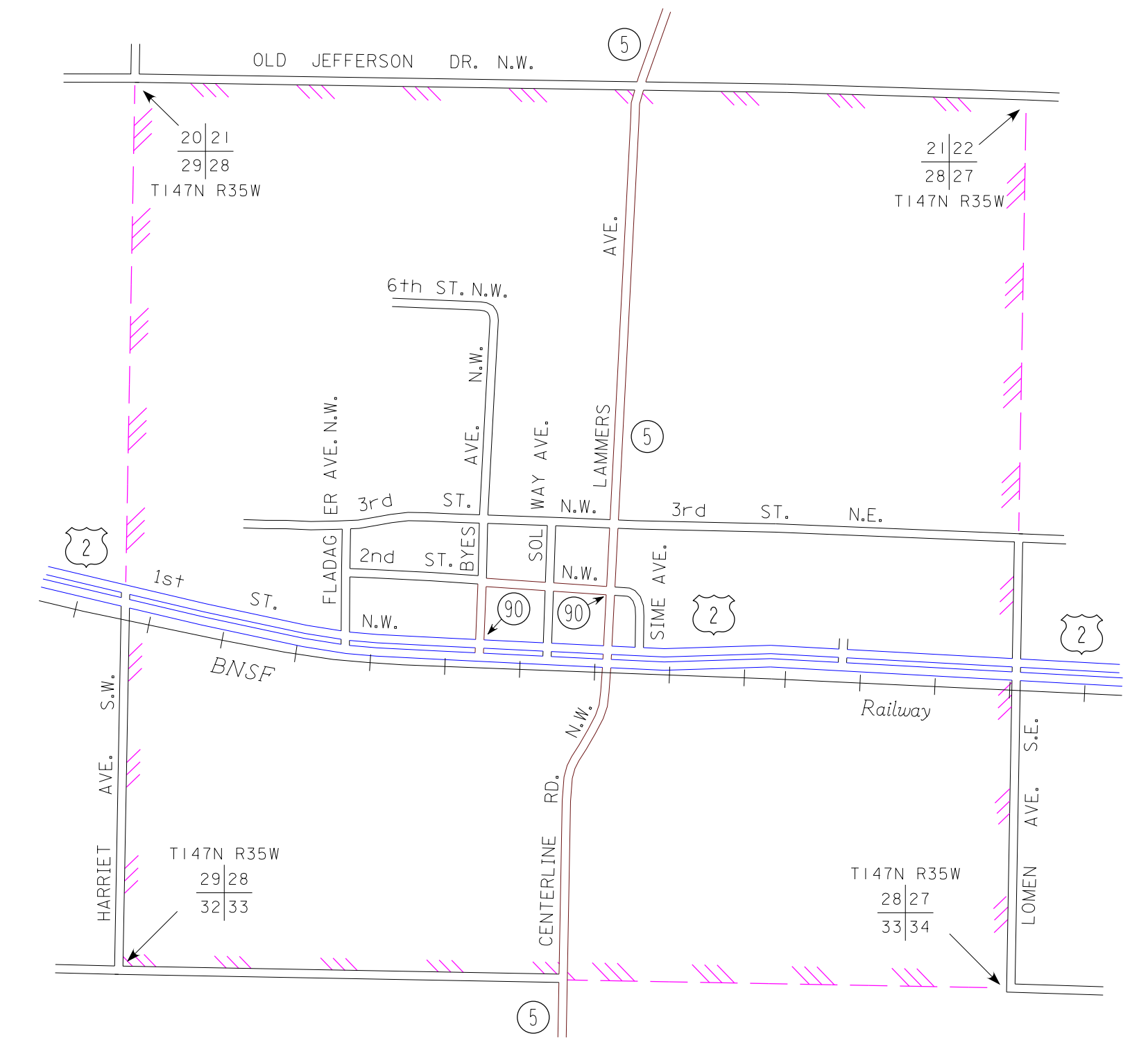


LEGEND

- INTERSTATE TRUNK HIGHWAY..... (I-95)
- U.S. TRUNK HIGHWAY..... (US-168)
- STATE TRUNK HIGHWAY..... (ST-55)
- COUNTY STATE AID HIGHWAY..... (CS-23)
- COUNTY ROAD..... (CR-14)
- PUBLIC ROAD..... (PR-30)
- PRIVATE ROAD..... (PR-91)
- CORPORATE LIMITS..... (---)



SOLWAY
BELTRAMI COUNTY
POP. 96



MUNICIPALITIES SHOWN
ON THIS SHEET
SOLWAY
TENSTRIKE
WILTON

To request information from this document in an alternative format, call 651-366-4718 or 1-800-657-3774 (Greater Minnesota); 711 or 1-800-627-3529 (Minnesota Relay). You may also send an e-mail to ADAREquest.dot@state.mn.us. (Please request at least one week in advance).

NOTE: 2010 U.S. CENSUS FIGURES SHOWN FOR ALL MUNICIPALITIES UNLESS OTHERWISE STATED.