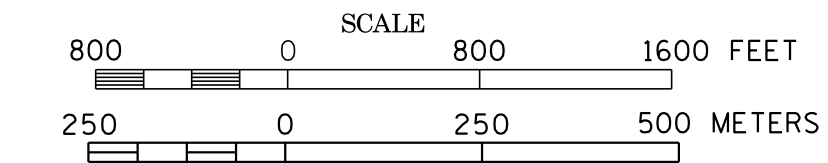
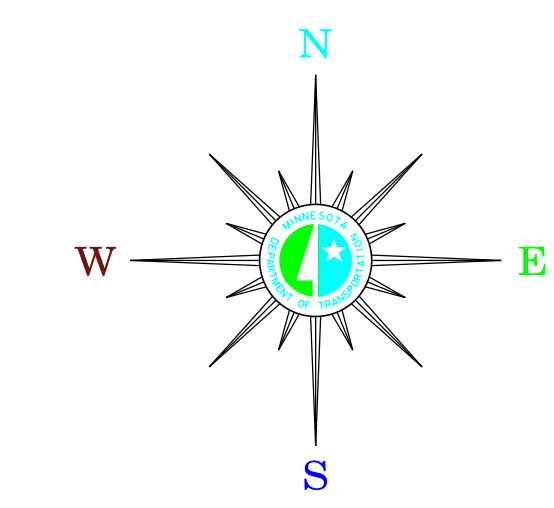


MUNICIPALITIES OF CARVER CO.

PREPARED BY THE
MINNESOTA DEPARTMENT OF TRANSPORTATION
OFFICE OF TRANSPORTATION SYSTEM MANAGEMENT
IN COOPERATION WITH
U.S. DEPARTMENT OF TRANSPORTATION
FEDERAL HIGHWAY ADMINISTRATION



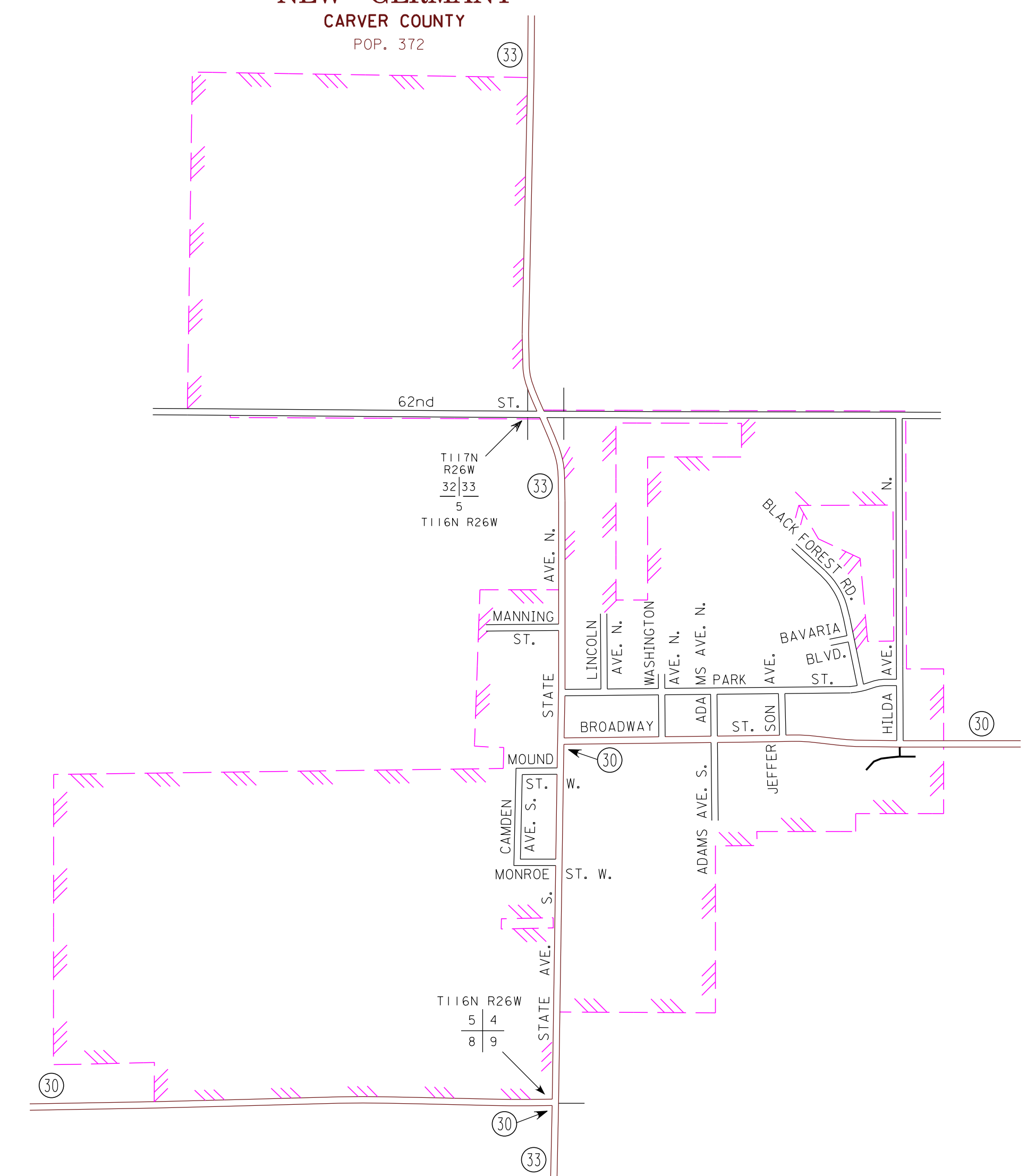
2015
BASIC DATA - 2013



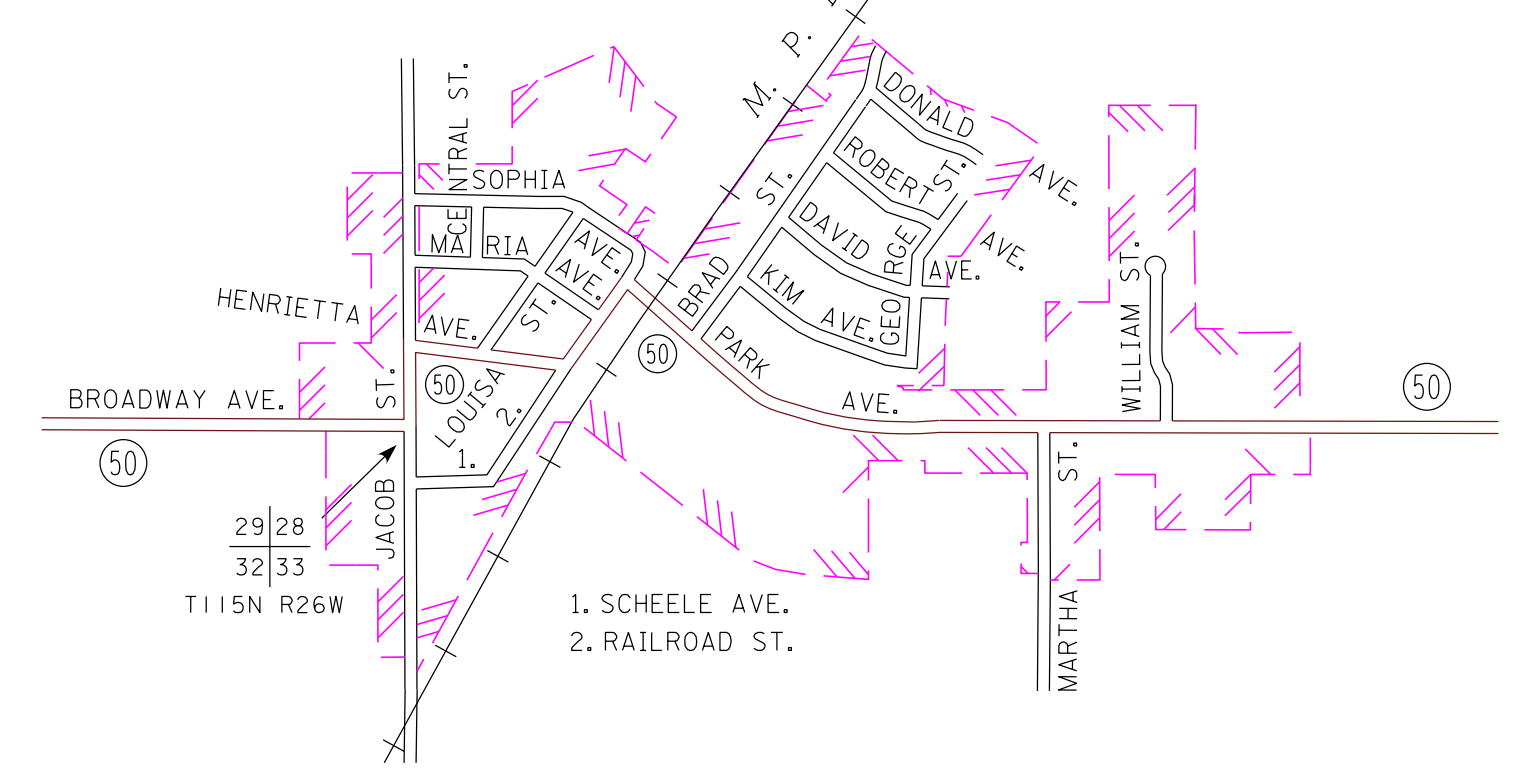
LEGEND

- INTERSTATE TRUNK HIGHWAY..... (I)
- U.S. TRUNK HIGHWAY..... (10)
- STATE TRUNK HIGHWAY..... (55)
- COUNTY STATE AID HIGHWAY..... (23)
- COUNTY ROAD..... (4)
- PUBLIC ROAD.....
- PRIVATE ROAD.....
- CORPORATE LIMITS.....

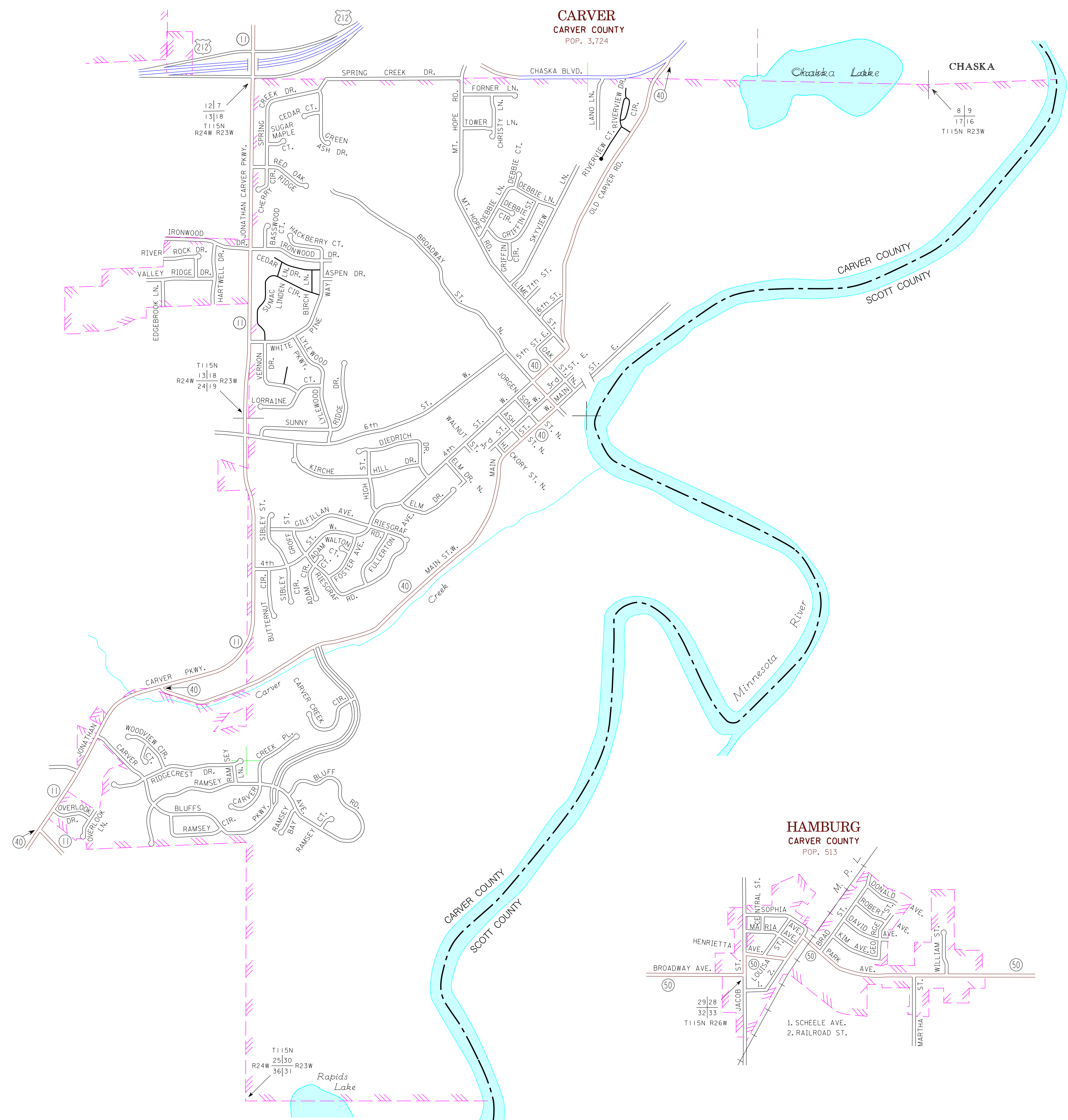
NEW GERMANY CARVER COUNTY POP. 372



HAMBURG CARVER COUNTY POP. 513



CARVER CARVER COUNTY POP. 3,724



MUNICIPALITIES SHOWN
ON THIS SHEET
CARVER
HAMBURG
NEW GERMANY

To request information from this document in an alternative format, call 651-366-4718 or 1-800-657-3774 (Greater Minnesota); 711 or 1-800-627-3529 (Minnesota Relay). You may also send an e-mail to: ADRequest.do@state.mn.us. (Please request at least one week in advance).

NOTE: 2010 U.S. CENSUS FIGURES SHOWN FOR ALL MUNICIPALITIES UNLESS OTHERWISE STATED.