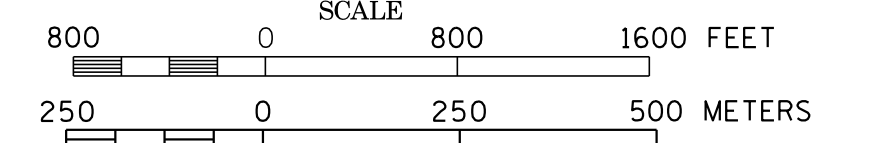
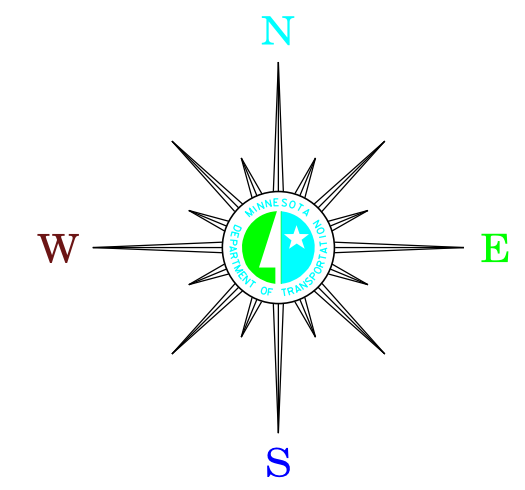


MUNICIPALITIES OF
RED LAKE CO.

PREPARED BY THE
MINNESOTA DEPARTMENT OF TRANSPORTATION
OFFICE OF TRANSPORTATION SYSTEM MANAGEMENT
IN COOPERATION WITH
U.S. DEPARTMENT OF TRANSPORTATION
FEDERAL HIGHWAY ADMINISTRATION

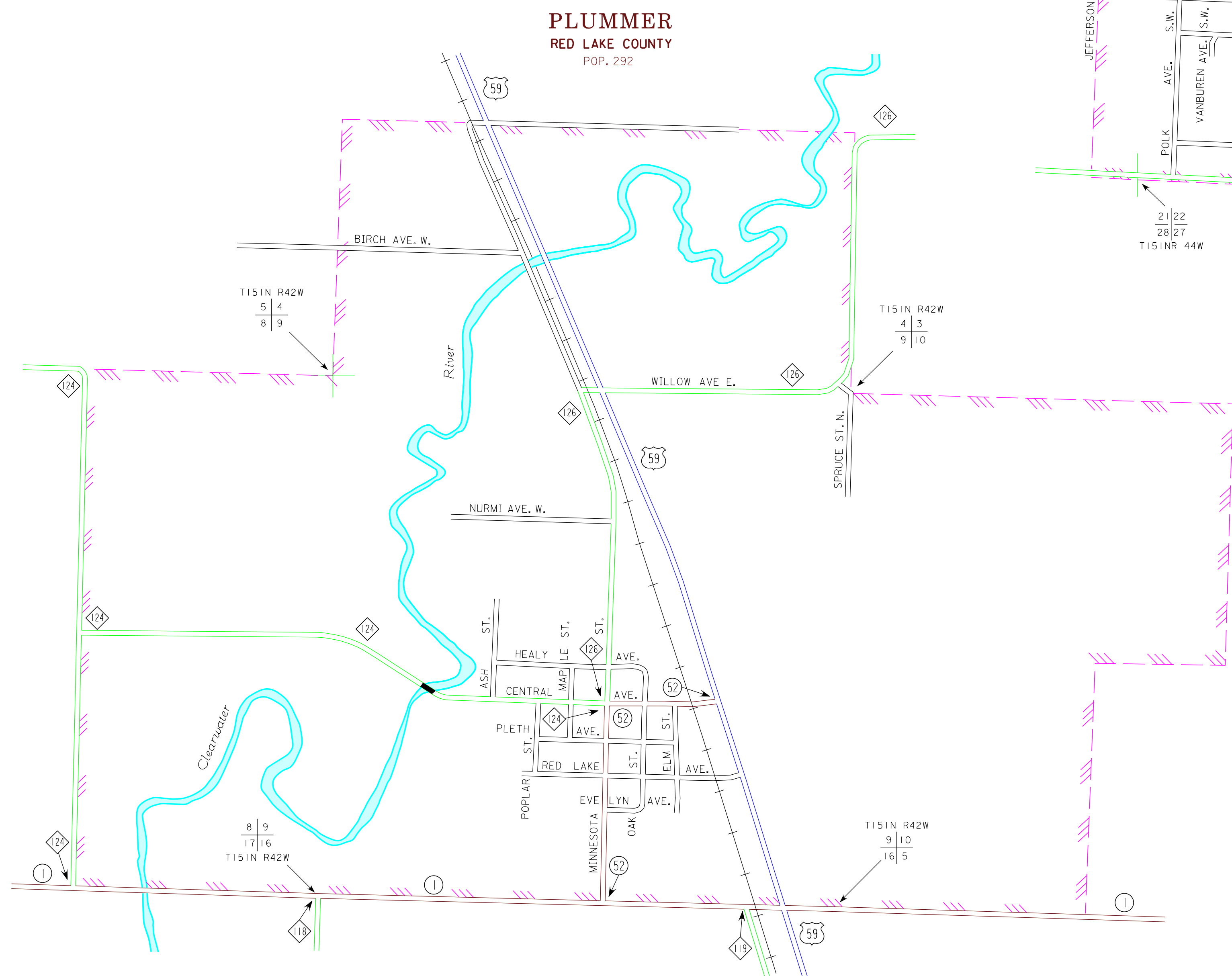
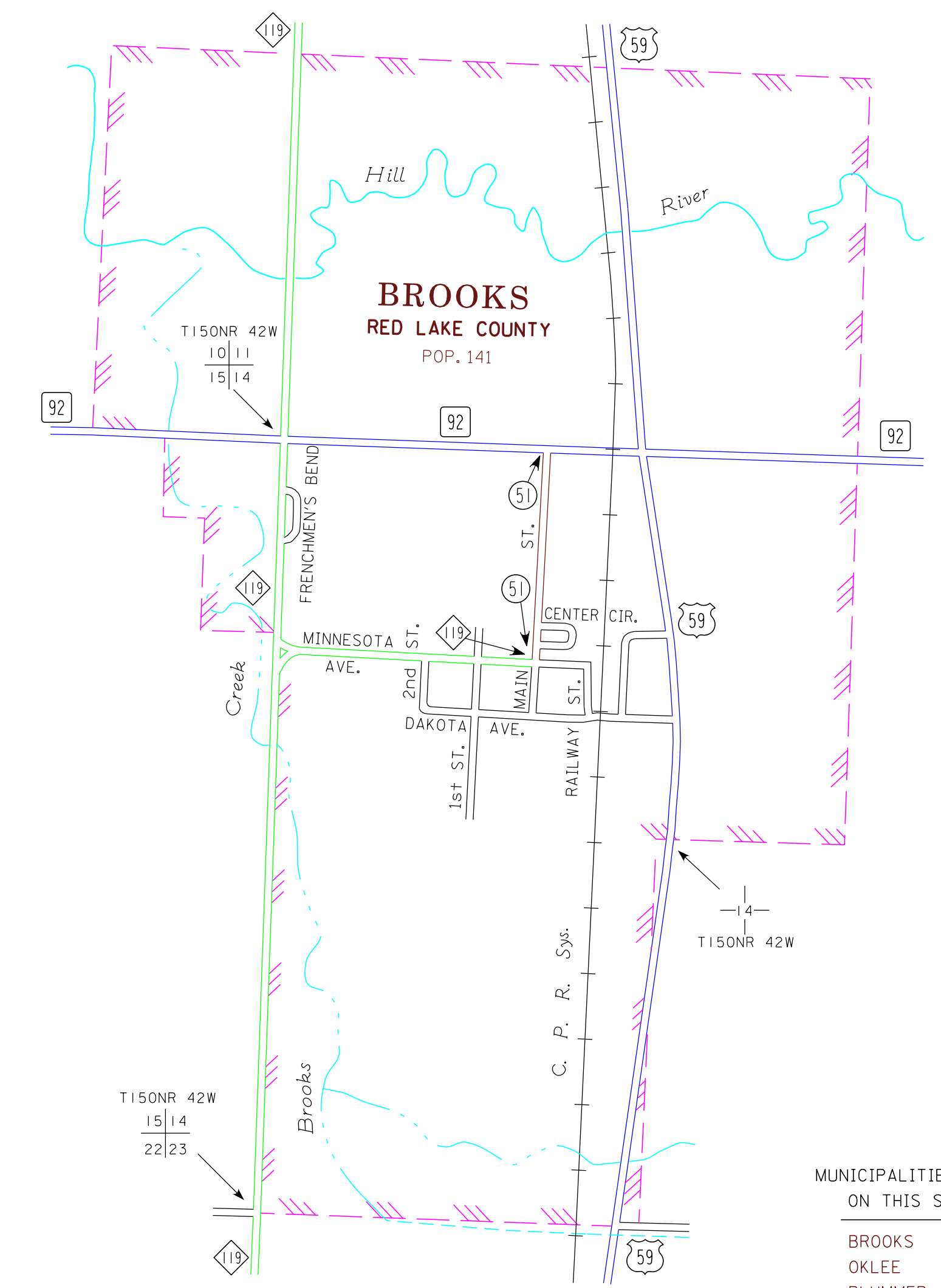
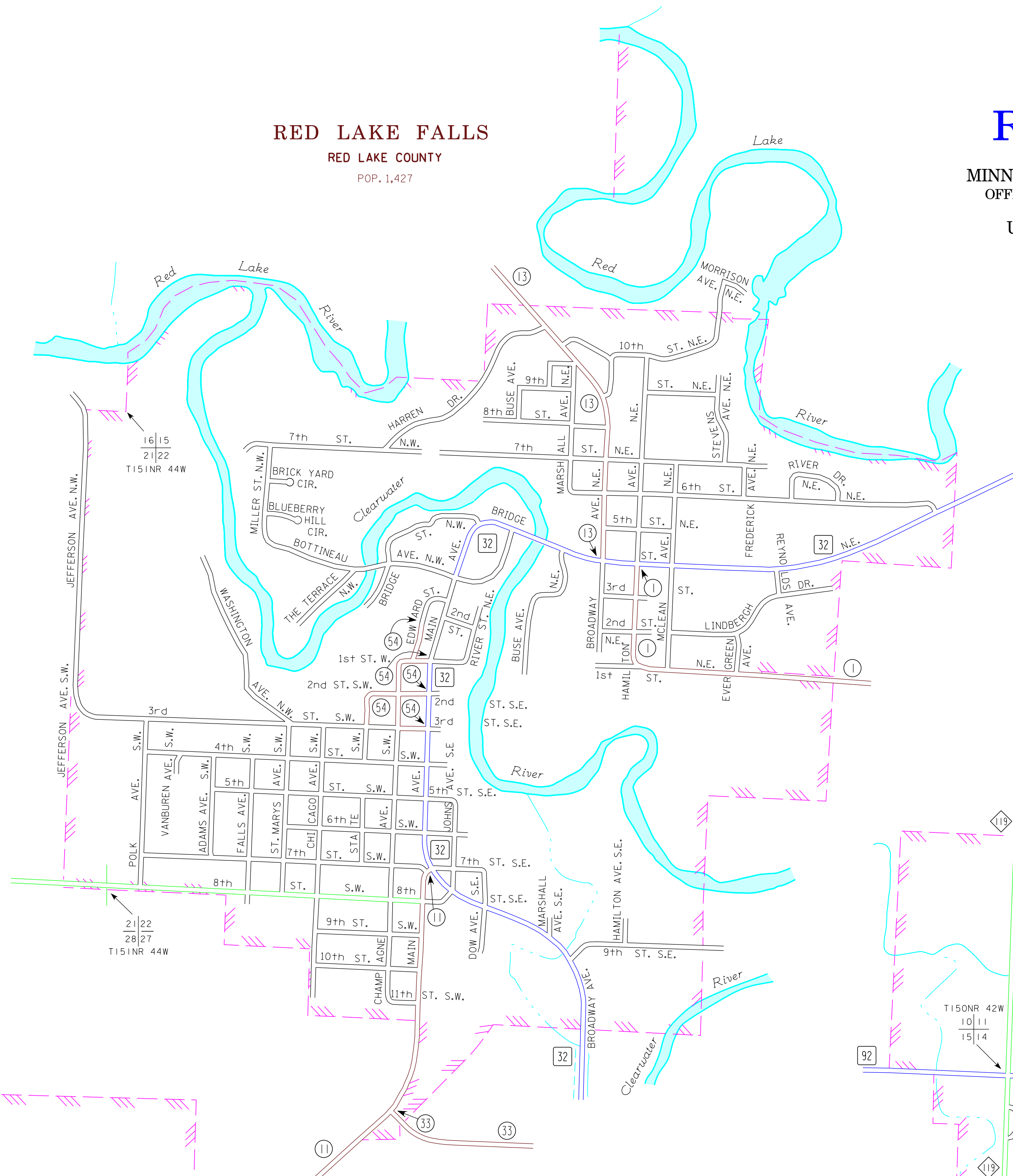
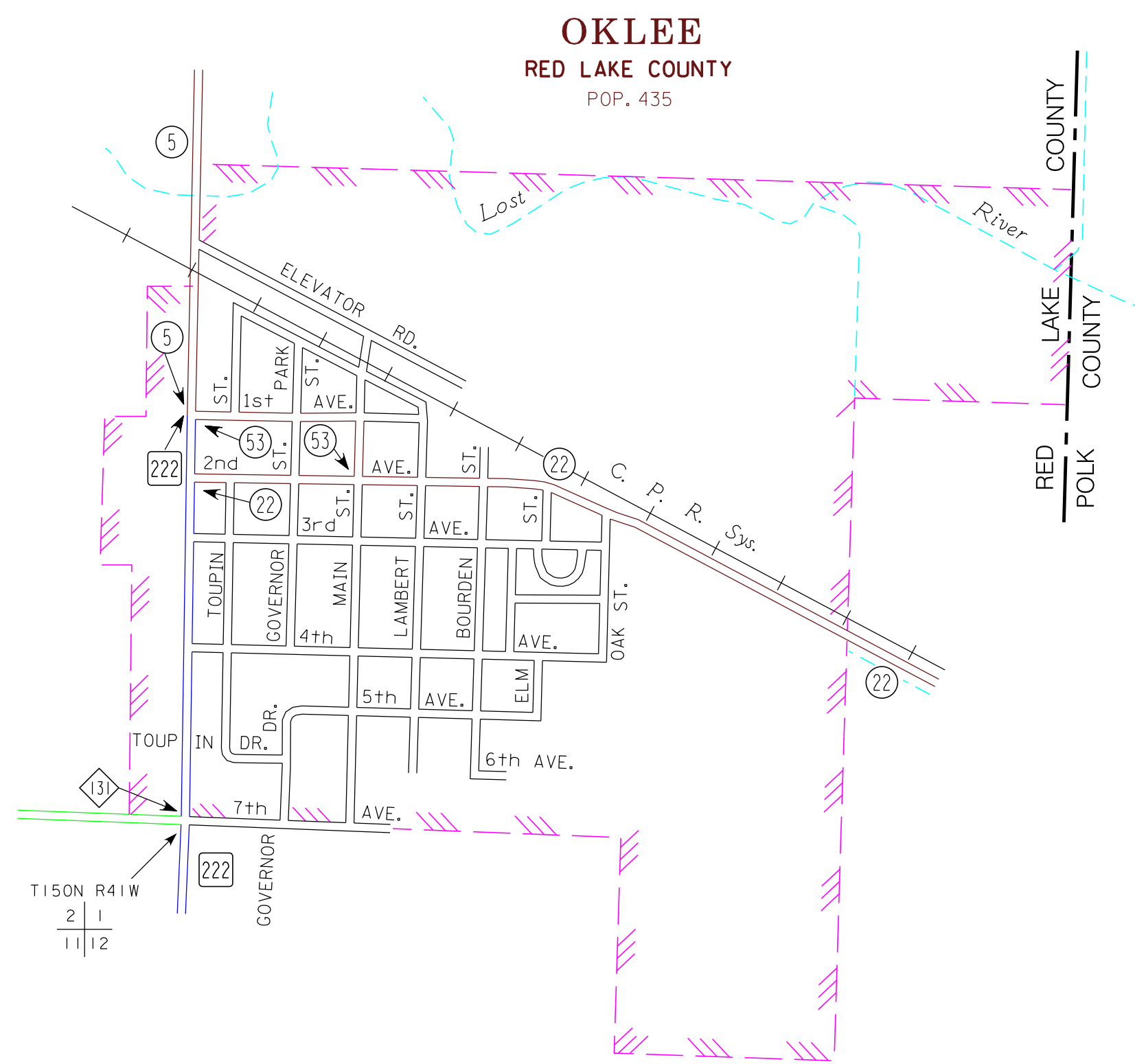


2015
BASIC DATA - 2010



LEGEND

- INTERSTATE TRUNK HIGHWAY..... (I-35)
- U.S. TRUNK HIGHWAY..... (US-59)
- STATE TRUNK HIGHWAY..... (ST-55)
- COUNTY STATE AID HIGHWAY..... (CSA-23)
- COUNTY ROAD..... (CR-19)
- PUBLIC ROAD.....
- PRIVATE ROAD.....
- CORPORATE LIMITS.....



MUNICIPALITIES SHOWN
ON THIS SHEET
BROOKS
OKLEE
PLUMMER
RED LAKE FALLS

To request information from this document in an alternative format, call 651-368-4718 or 1-800-657-3774 (Greater Minnesota); 711 or 1-800-627-3529 (Minnesota Relay). You may also send an e-mail to ADRequest.doi@state.mn.us (Please request at least one week in advance).

NOTE: 2010 U.S. CENSUS FIGURES SHOWN FOR ALL MUNICIPALITIES UNLESS OTHERWISE STATED.