

GENERAL HIGHWAY MAP CARLTON COUNTY MINNESOTA

PREPARED BY THE
MINNESOTA DEPARTMENT OF TRANSPORTATION
OFFICE OF TRANSPORTATION SYSTEM MANAGEMENT
IN COOPERATION WITH
U.S. DEPARTMENT OF TRANSPORTATION
FEDERAL HIGHWAY ADMINISTRATION

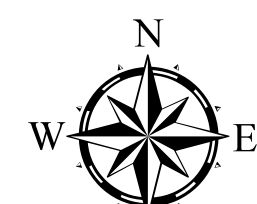
SCALE



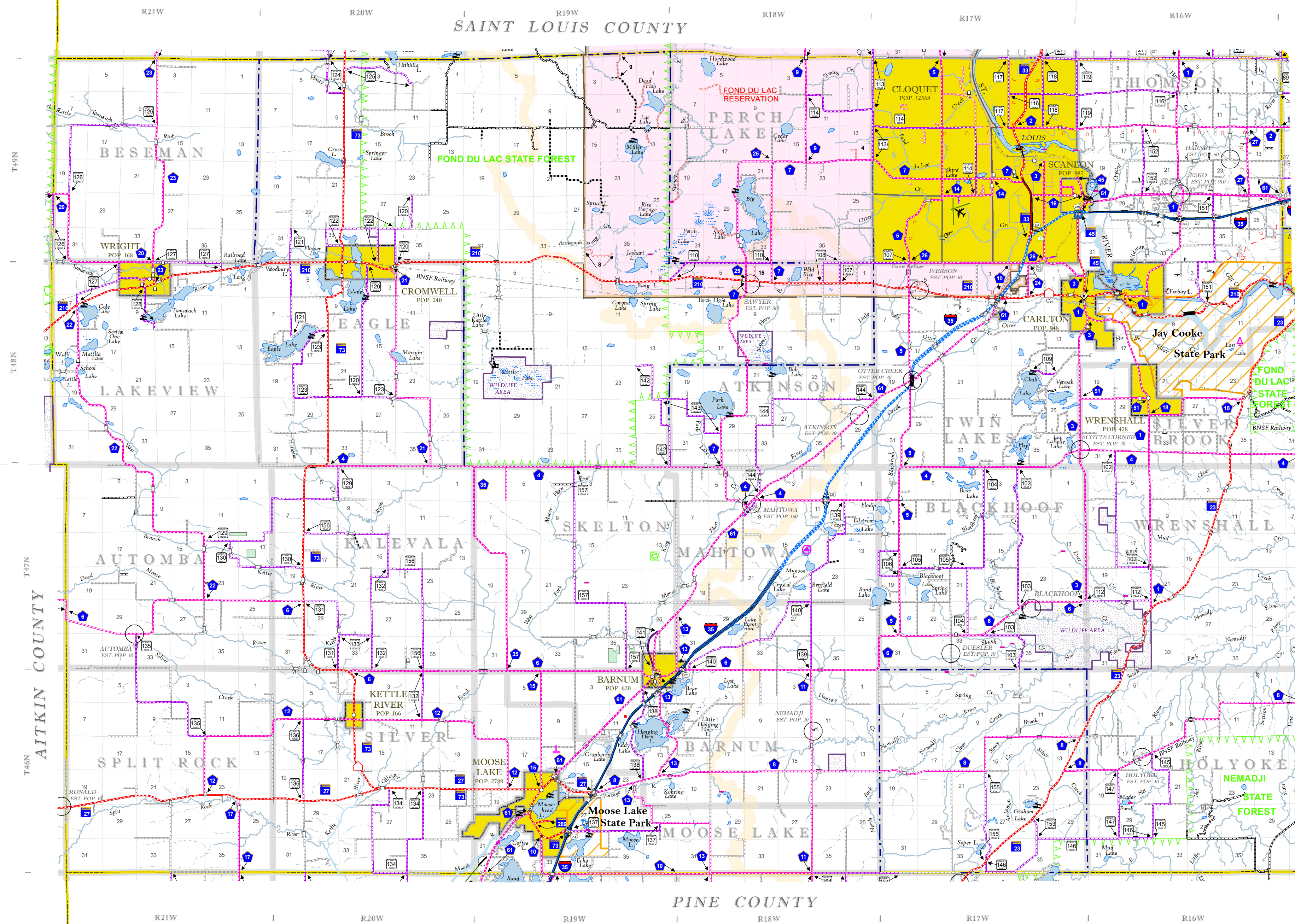
1 in = 2 miles

2022

Projection:
Transverse Mercator
NAD 1986
UTM Zone 15

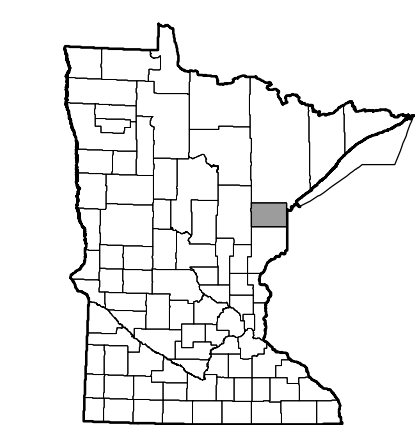


North American Datum
of 1986



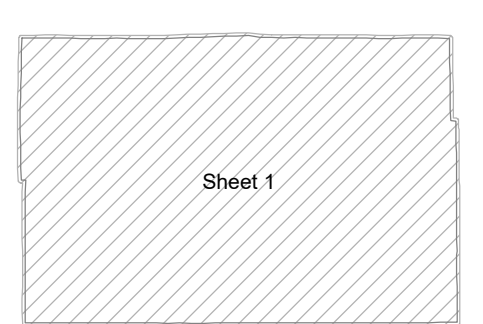
ROAD AND ROADWAY FEATURES	
INTERSTATE	CONCRETE
US HIGHWAY	BITUMINOUS
STATE AID HIGHWAY	GRAVEL
COUNTY ROAD	DIRT/UNIMPROVED
TOWNSHIP ROAD	UNKNOWN
UNORGANIZED TERRITORY ROAD	PROPOSED
PRIVATE ROAD	RAMP OR CONNECTOR
OTHER ROADS	INTERSTATE EXT.
MUNICIPAL	GREAT RIVER ROAD
Military	National Forest
National Park	State Park
National Wildlife Refuge	State Game
RAILROAD AND RAILWAY FEATURES	
EMPIRE BUILDER STATION (AMTRAK)	AVIATION FEATURES
NORTHSTAR STATION (COMMUTER)	COMMERCIAL AIRPORT (Complete Facilities)
INFRASTRUCTURE FEATURES	
LONG BRIDGE (100' or Greater Span)	GENERAL AIRPORT (Limited Facilities)
MAJOR BRIDGE (20' to 100' Span)	ARSTRIP (No Facilities)
MINOR BRIDGE (5' to 20' Span)	SEAPLANE
DAM	AIRPORT RUNWAY
LOCK AND DAM	BOUNDARY FEATURES
STATE CAPITAL	TRIBAL LAND
COUNTY BEAT	STATE OF MINNESOTA
CITY CENTER	COUNTY
TOWNSHIP COMMUNITY	MUNICIPALITY
PUBLIC SERVICE FEATURES	
MINOT OFFICE	UNORGANIZED TERRITORY
MINOT TRUCK STATION	FEDERAL ADJUSTED URSAN AREA (2014)
HIGHWAY PATROL DISTRICT OFFICE	CIVIL TOWNSHIP
STATE TRAVEL INFORMATION CENTER	CONGRESSIONAL TOWNSHIP
REST AREA (Full Service)	SECTION
REST AREA (Vault Toilet)	MILITARY
WAYSIDE (Vault or Pit Toilet)	VOYAGEURS NATIONAL PARK
PARK AND RIDE LOT	BOUNDARY WATERS CANOE AREA WILDERNESS
POINT OF ENTRY	STATE PARK
PUBLIC ACCESS POINT	REGIONAL PARK
PUBLIC UNIVERSITY AND COLLEGE	NATIONAL FOREST
PRIVATE UNIVERSITY AND COLLEGE	NATIONAL AND STATE FOREST
FARMLANDS	STATE FOREST
STATE HISTORICAL MARKER	NATIONAL TRAIL
HISTORIC DISTRICT	WILDLIFE REFUGE AREA
HISTORIC SITE	WILDLIFE MANAGEMENT AREA
MONUMENT	HYDROLOGIC FEATURES
CEMETERY	LAKE, POND OR RESERVOIR
	RIVER OR STREAM (PERMANENT)
	STREAM (Intermittent)
	DRAINAGE DITCH
	WETLAND
	ISLAND OR LAND
	REGIONAL WATERSHED

Outline Map of Minnesota showing location of the County within the state.



Outline Map of the County.

Area of this County 874.57 Sq. Miles
Land Area 861.38 Sq. Miles
2020 Total County Population 36207



To request information from this document in an alternative format, call 651-366-4718 or 1-800-657-3774 (Greater Minnesota); 711 or 1-800-627-3529 (Minnesota Relay). You may also send an e-mail to ADRequest.dot@state.mn.us. (Please request at least one week in advance.)

NOTE: FOR DETAIL OF COUNTY STATE AID HIGHWAYS AND COUNTY ROADS IN INCORPORATED PLACE, SEE MAPS OF MUNICIPALITIES.

LAST EDITED ON 1-07-2023

SHEET 1 OF 1