

GENERAL HIGHWAY MAP COTTONWOOD COUNTY MINNESOTA

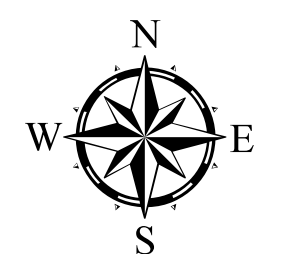
PREPARED BY THE
MINNESOTA DEPARTMENT OF TRANSPORTATION
OFFICE OF TRANSPORTATION SYSTEM MANAGEMENT
IN COOPERATION WITH
U.S. DEPARTMENT OF TRANSPORTATION
FEDERAL HIGHWAY ADMINISTRATION

SCALE



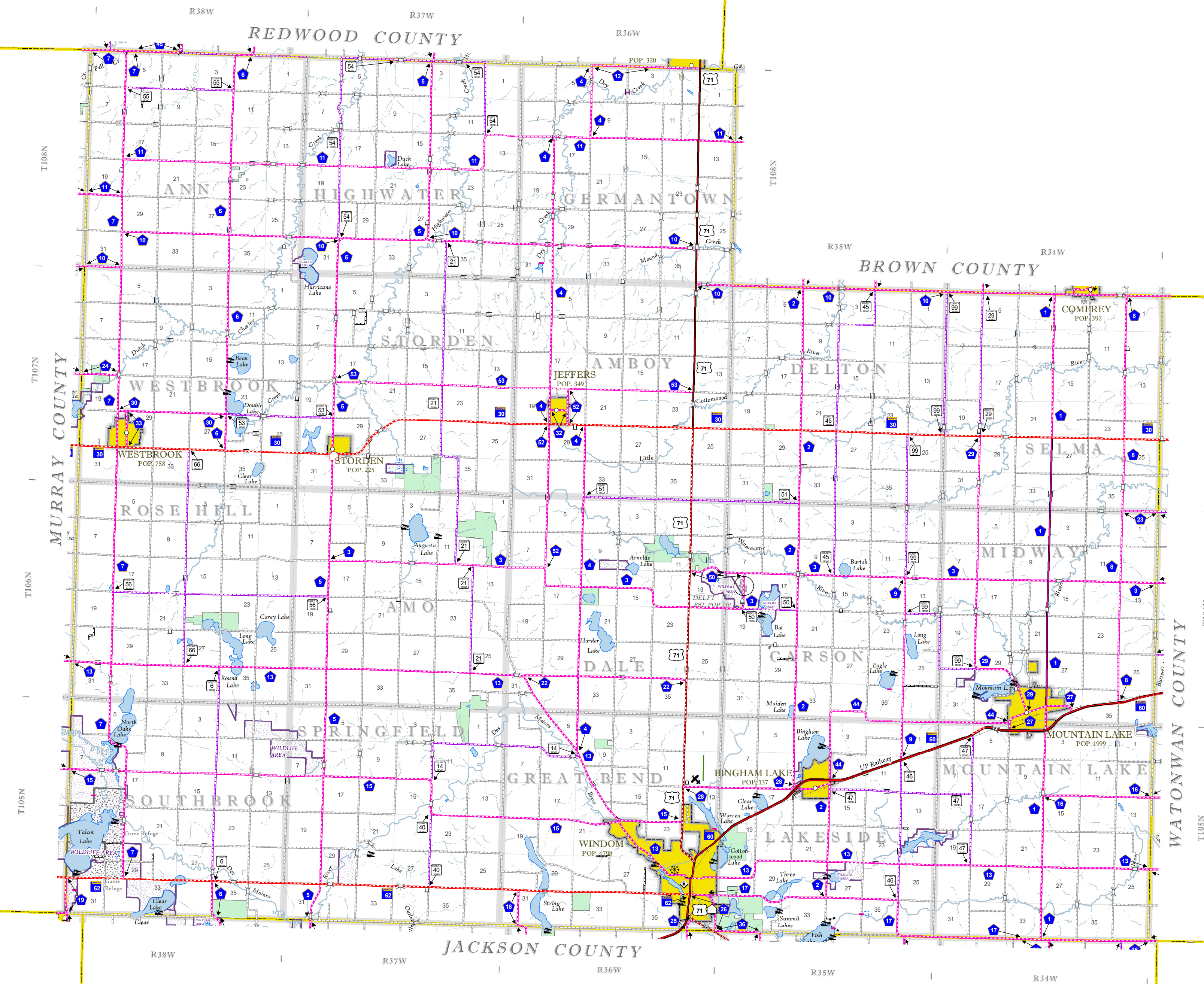
1 in = 2 miles

2023



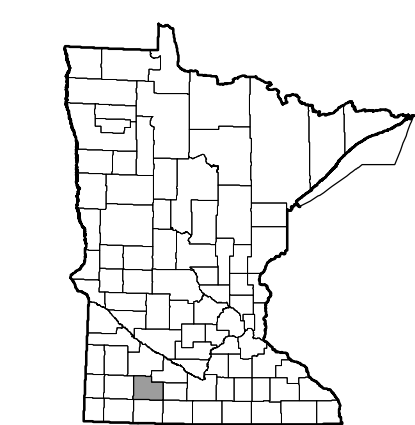
Projection:
Transverse Mercator
NAD 1986
UTM Zone 15

North American Datum
of 1986



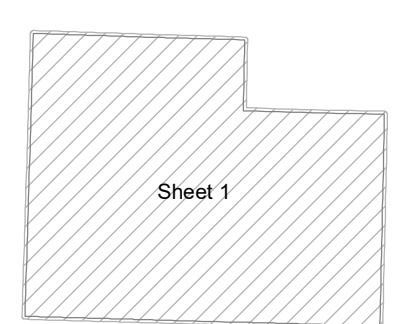
ROAD AND ROADWAY FEATURES		AVIATION FEATURES	
INTERSTATE	CONCRETE	COMMERCIAL AIRPORT (Complete Facilities)	GENERAL AIRPORT (Limited Facilities)
US HIGHWAY	BITUMINOUS	ARSTRIP (No Facilities)	SEAPLANE
STATE AID HIGHWAY	GRAVEL	STATE OF MINNESOTA	COUNTY
COUNTY ROAD	DIRT/UNIMPROVED	MUNICIPALITY	UNORGANIZED TERRITORY
TOWNSHIP ROAD	UNKNOWN	FEDERAL ADJUSTED URBAN AREA (2014)	CIVIL TOWNSHIP
UNORGANIZED TERRITORY ROAD	PROPOSED	CONGRESSIONAL TOWNSHIP	SECTION
PRIVATE ROAD	RAMP OR CONNECTOR	MILITARY	VOYAGEURS NATIONAL PARK
OTHER ROADS:	INTERSTATE EXT.	BOUNDARY FEATURES	BOUNDARY WATERS CANOE AREA WILDERNESS
MUNICIPAL	GREAT RIVER ROAD	TRIBAL LAND	STATE PARK
Military		STATE OF MINNESOTA	REGIONAL PARK
National Park		COUNTY	NATIONAL FOREST
Monument		MUNICIPALITY	NATIONAL AND STATE FOREST
National Wildlife		UNORGANIZED TERRITORY	STATE FOREST
State Game		FEDERAL ADJUSTED URBAN AREA (2014)	NATIONAL TRAIL
		CIVIL TOWNSHIP	WILDLIFE REFUGE AREA
		CONGRESSIONAL TOWNSHIP	WILDLIFE MANAGEMENT AREA
		SECTION	LAKE, POND OR RESERVOIR
		MILITARY	RIVER OR STREAM (PERMANENT)
		VOYAGEURS NATIONAL PARK	STREAM (Intermittent)
		BOUNDARY WATERS CANOE AREA WILDERNESS	DRAINAGE DITCH
		STATE PARK	WETLAND
		REGIONAL PARK	ISLAND OR LAND
		NATIONAL FOREST	REGIONAL WATERSHED
		NATIONAL AND STATE FOREST	
		STATE FOREST	
		NATIONAL TRAIL	
		WILDLIFE REFUGE AREA	
		WILDLIFE MANAGEMENT AREA	
		LAKE, POND OR RESERVOIR	
		RIVER OR STREAM (PERMANENT)	
		STREAM (Intermittent)	
		DRAINAGE DITCH	
		WETLAND	
		ISLAND OR LAND	
		REGIONAL WATERSHED	

Outline Map of Minnesota showing location of the County within the state.



Outline Map of the County.

Area of this County 648.51 Sq. Miles
Land Area 638.61 Sq. Miles
2020 Total County Population 11517



LAST EDITED ON 1-02-2024

SHEET 1 OF 1

To request information from this document in an alternative format, call 651-366-4718 or 1-800-657-3774 (Greater Minnesota); 711 or 1-800-627-3529 (Minnesota Relay). You may also send an e-mail to ADRequest.dot@state.mn.us. (Please request at least one week in advance.)

NOTE: FOR DETAIL OF COUNTY STATE AID HIGHWAYS AND COUNTY ROADS IN INCORPORATED PLACE, SEE MAPS OF MUNICIPALITIES.