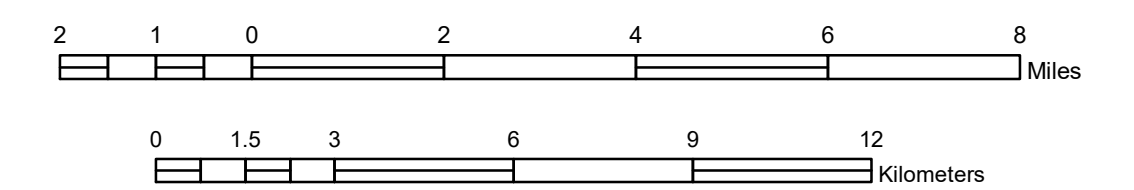


# GENERAL HIGHWAY MAP HUBBARD COUNTY MINNESOTA

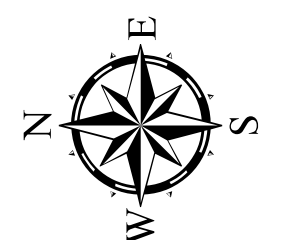
PREPARED BY THE  
MINNESOTA DEPARTMENT OF TRANSPORTATION  
OFFICE OF TRANSPORTATION SYSTEM MANAGEMENT  
IN COOPERATION WITH  
U.S. DEPARTMENT OF TRANSPORTATION  
FEDERAL HIGHWAY ADMINISTRATION

SCALE



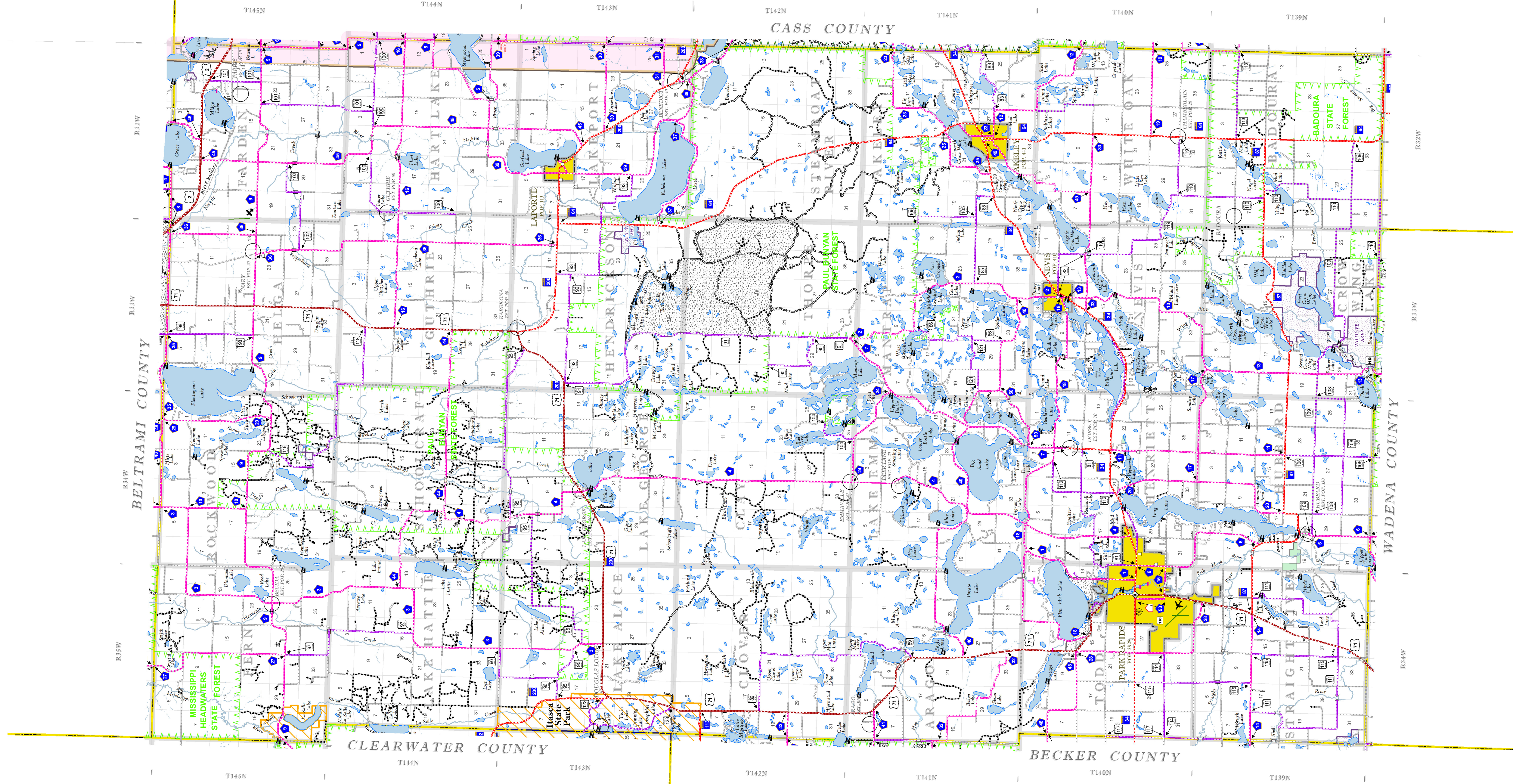
1 in = 2 miles

2023



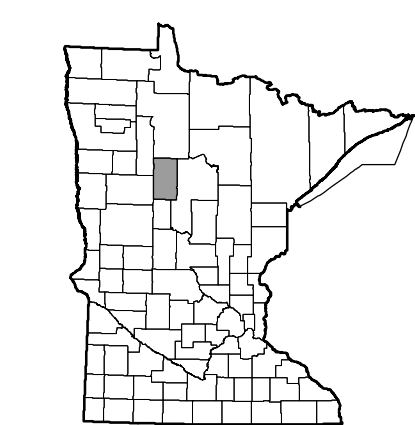
Projection:  
Transverse Mercator  
NAD 1986  
UTM Zone 15

North American Datum  
of 1986



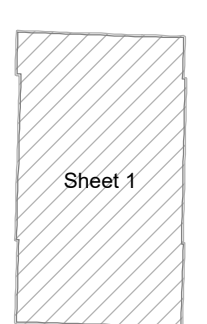
ROAD AND ROADWAY FEATURES	
INTERSTATE	CONCRETE
US HIGHWAY	BITUMINOUS
MINN. HIGHWAY	GRAVEL
COUNTY STATE AID HIGHWAY	DIRT/UNIMPROVED
COUNTY ROAD	UNKNOWN
TRAIL ROAD	PROPOSED
TOWNSHIP ROAD	RAMP OR CONNECTOR
UNORGANIZED TERRITORY ROAD	INTERSTATE EXT.
PRIVATE ROAD	GREAT RIVER ROAD
OTHER ROADS	
MUNICIPAL	Military National Park
	National Monument
	National Wildlife State Game
	State Park
	State Forest
	State Game
	AVIATION FEATURES
	COMMERCIAL AIRPORT (Complete Facilities)
	GENERAL AIRPORT (Limited Facilities)
	ARRESTER (No Facilities)
	SEAPLANE
	AIRPORT RUNWAY
	BOUNDARY FEATURES
	TRIBAL LAND
	STATE OF MINNESOTA
	COUNTY
	MUNICIPALITY
	UNORGANIZED TERRITORY
	FEDERAL ADJUSTED URSAN AREA (2014)
	CIVIL TOWNSHIP
	CONGRESSIONAL TOWNSHIP
	SECTION
	MILITARY
	VOYAGEURS NATIONAL PARK
	BOUNDARY WATERS CANOE AREA WILDERNESS
	STATE PARK
	REGIONAL PARK
	NATIONAL FOREST
	NATIONAL AND STATE FOREST
	STATE FOREST
	NATIONAL TRAIL
	WILDLIFE REFUGE AREA
	WILDLIFE MANAGEMENT AREA
	HYDROLOGIC FEATURES
	LAKE, POND OR RESERVOIR
	RIVER OR STREAM (PERMANENT)
	STREAM (SEASONAL)
	DRAINAGE DITCH
	WETLAND
	ISLAND OR LAND
	REGIONAL WATERSHED
	CULTURAL FEATURES
	STATE HISTORICAL MARKER
	HISTORIC DISTRICT
	HISTORIC SITE
	MONUMENT
	CEMETERY
	RAILROAD AND RAILWAY FEATURES
	EMPIRE BUILDER STATION (AMTRAK)
	NORTHSTAR STATION (COMMUTER)
	INFRASTRUCTURE FEATURES
	LONG BRIDGE (100' OR GREATER SPAN)
	MAJOR BRIDGE (20' TO 100' SPAN)
	MINOR BRIDGE (5' TO 20' SPAN)
	DAM
	LOCK AND DAM
	CITY CENTERS
	STATE CAPITAL
	COUNTY BEAT
	CITY CENTER
	TOWNSHIP COMMUNITY
	PUBLIC SERVICE FEATURES
	MINOT OFFICE
	MINOT TRUCK STATION
	HIGHWAY PATROL DISTRICT OFFICE
	STATE TRAVEL INFORMATION CENTER
	REST AREA (FULL SERVICES)
	REST AREA (VAULT TOILET)
	WAYSIDE (VAULT OR PVI TOILET)
	PARK AND RIDE LOT
	PORT OF ENTRY
	PUBLIC ACCESS POINT
	PUBLIC UNIVERSITY AND COLLEGE
	PRIVATE UNIVERSITY AND COLLEGE
	FARMROADS

Outline Map of Minnesota showing location of the County within the state.



Outline Map of the County.

Area of this County 999.29 Sq. Miles  
Land Area 925.68 Sq. Miles  
2020 Total County Population 21344



LAST EDITED ON 1-02-2024

SHEET 1 OF 1

To request information from this document in an alternative format, call 651-366-4718 or 1-800-657-3774 (Greater Minnesota); 711 or 1-800-627-3529 (Minnesota Relay). You may also send an e-mail to ADRequest.dot@state.mn.us. (Please request at least one week in advance.)

NOTE: FOR DETAIL OF COUNTY STATE AID HIGHWAYS AND COUNTY ROADS IN INCORPORATED PLACE, SEE MAPS OF MUNICIPALITIES.