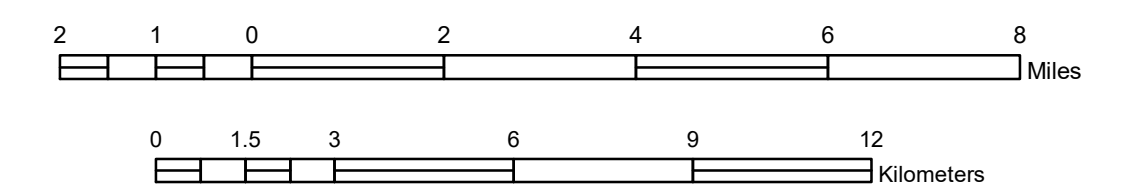


# GENERAL HIGHWAY MAP SCOTT COUNTY MINNESOTA

PREPARED BY THE  
MINNESOTA DEPARTMENT OF TRANSPORTATION  
OFFICE OF TRANSPORTATION SYSTEM MANAGEMENT  
IN COOPERATION WITH  
U.S. DEPARTMENT OF TRANSPORTATION  
FEDERAL HIGHWAY ADMINISTRATION

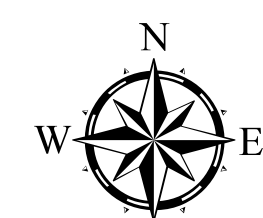
SCALE



1 in = 2 miles

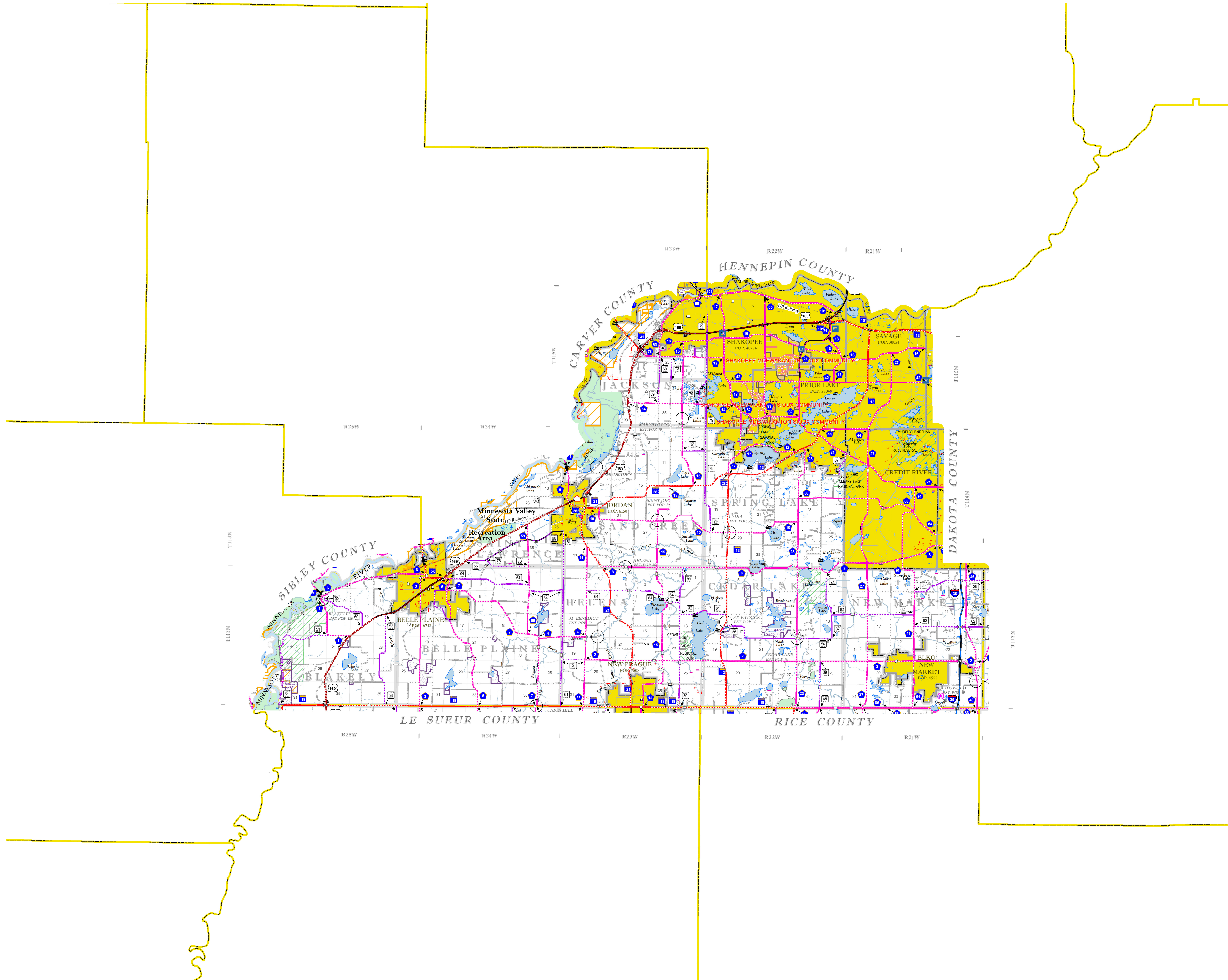
2022

Projection:  
Transverse Mercator  
NAD 1986  
UTM Zone 15

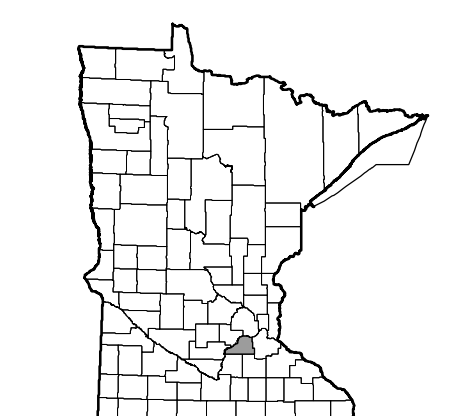


North American Datum  
of 1986

ROAD AND ROADWAY FEATURES	
INTERSTATE	CONCRETE
US HIGHWAY	BITUMINOUS
MINN HIGHWAY	GRAVEL
COUNTY STATE AID HIGHWAY	DIRT/UNIMPROVED
COUNTY ROAD	UNKNOWN
TOWNSHIP ROAD	PROPOSED
UNORGANIZED TERRITORY ROAD	RAMP OR CONNECTOR
PRIVATE ROAD	INTERSTATE EXT.
OTHER ROADS:	GREAT RIVER ROAD
MUNICIPAL	
Military	National Forest
National Park	Monument
National Wildlife Refuge	State Park
State Game	State Forest
	State Game
RAILROAD AND RAILWAY FEATURES	
EMPIRE BUILDER STATION (AMTRAK)	
NORTHSTAR STATION (COMMUTER)	
INFRASTRUCTURE FEATURES	
LONG BRIDGE (100' OR GREATER SPAN)	
MAJOR BRIDGE (20' TO 100' SPAN)	
MINOR BRIDGE (5' TO 20' SPAN)	
DAM	
LOCK AND DAM	
CITY CENTERS	
STATE CAPITAL	
COUNTY BEAT	
CITY CENTER	
TOWNSHIP COMMUNITY	
PUBLIC SERVICE FEATURES	
MINIOT OFFICE	
MINIOT TRUCK STATION	
HIGHWAY PATROL DISTRICT OFFICE	
STATE TRAVEL INFORMATION CENTER	
REST AREA (FULL SERVICE)	
REST AREA (VAULT TOILET)	
WAYSIDE (VAULT OR PVI TOILET)	
PARK AND RIDE LOT	
PORT OF ENTRY	
PUBLIC ACCESS POINT	
PUBLIC UNIVERSITY AND COLLEGE	
PRIVATE UNIVERSITY AND COLLEGE	
FARMGROUNDS	
CULTURAL FEATURES	
STATE HISTORICAL MARKER	
HISTORIC DISTRICT	
HISTORIC SITE	
MONUMENT	
CEMETERY	
	AVIATION FEATURES
	COMMERCIAL AIRPORT (COMPLETE FACILITIES)
	GENERAL AIRPORT (LIMITED FACILITIES)
	ARSTRIP (NO FACILITIES)
	SEAPLANE
	AIRPORT RUNWAY
	BOUNDARY FEATURES
	TRIBAL LAND
	STATE OF MINNESOTA
	COUNTY
	MUNICIPALITY
	UNORGANIZED TERRITORY
	FEDERAL ADJUSTED URBAN AREA (2014)
	CIVIL TOWNSHIP
	CONGRESSIONAL TOWNSHIP
	SECTION
	MILITARY
	VOYAGEURS NATIONAL PARK
	BOUNDARY WATERS CANOE AREA WILDERNESS
	STATE PARK
	REGIONAL PARK
	NATIONAL FOREST
	NATIONAL AND STATE FOREST
	STATE FOREST
	NATIONAL TRAIL
	WILDLIFE REFUGE AREA
	WILDLIFE MANAGEMENT AREA
HYDROLOGIC FEATURES	
	LAKE, POND OR RESERVOIR
	RIVER OR STREAM (PERMANENT)
	STREAM (INTERMITTENT)
	DRAINAGE DITCH
	WETLAND
	ISLAND OR LAND
	REGIONAL WATERSHED

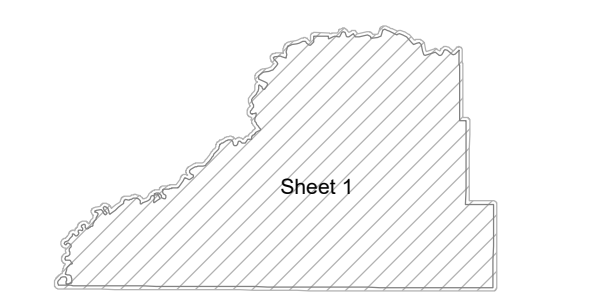


Outline Map of Minnesota showing location of the County within the state.



Outline Map of the County.

Area of this County 367.98 Sq. Miles  
Land Area 356.48 Sq. Miles  
2020 Total County Population 150928



To request information from this document in an alternative format, call 651-366-4718 or 1-800-657-3774 (Greater Minnesota); 711 or 1-800-627-3529 (Minnesota Relay). You may also send an e-mail to ADAREquest.dot@state.mn.us. (Please request at least one week in advance.)

NOTE: FOR DETAIL OF COUNTY STATE AID HIGHWAYS AND COUNTY ROADS IN INCORPORATED PLACE, SEE MAPS OF MUNICIPALITIES.

LAST EDITED ON 1-04-2023

SHEET 1 OF 1