

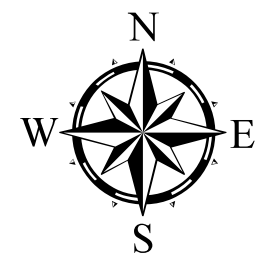
# TOWNSHIP OF ATLANTA

PREPARED BY THE  
MINNESOTA DEPARTMENT OF TRANSPORTATION  
OFFICE OF TRANSPORTATION SYSTEM MANAGEMENT

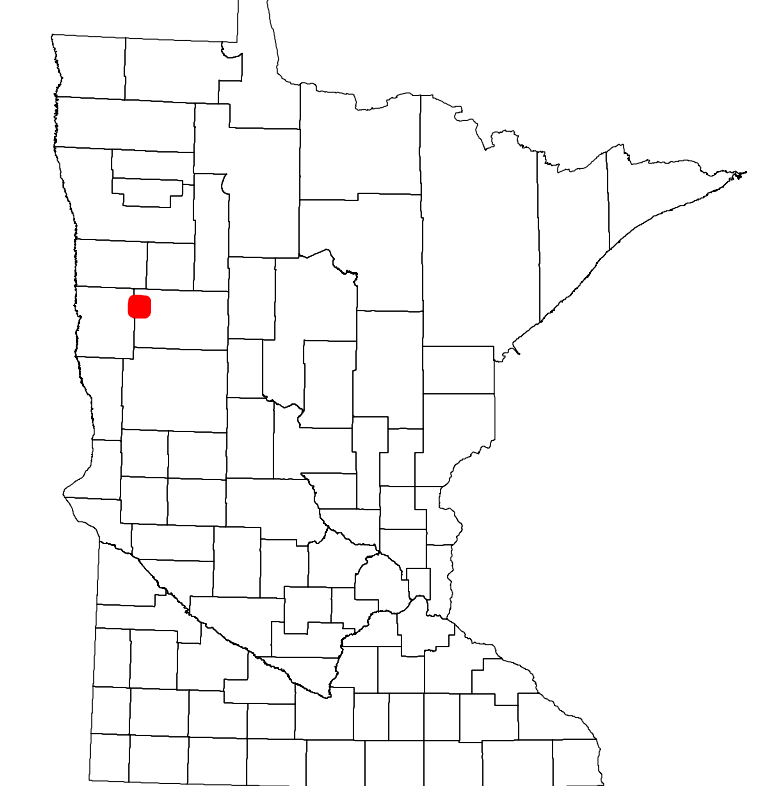
IN COOPERATION WITH  
U.S. DEPARTMENT OF TRANSPORTATION  
FEDERAL HIGHWAY ADMINISTRATION



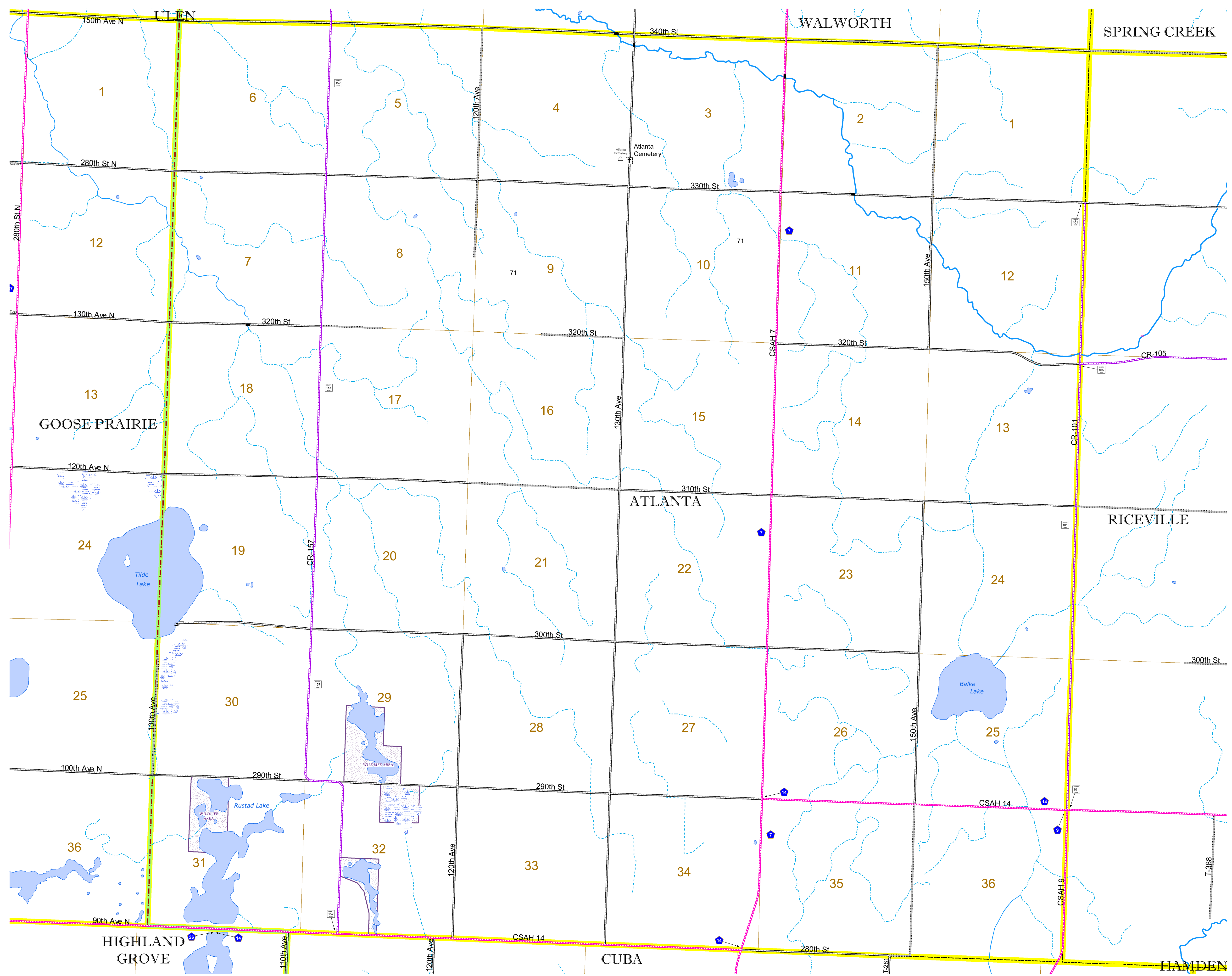
Projection:  
Transverse Mercator  
NAD 1986  
UTM Zone 15  
North American Datum  
of 1986



ROAD AND ROADWAY FEATURES		AVIATION FEATURES		
INTERSTATE	CONCRETE	COMMERCIAL AIRPORT	GENERAL AIRPORT	
US HIGHWAY	BITUMINOUS	AIRSTRIP	SEAPLANE	
MN HIGHWAY	GRAVEL	AIRPORT RUNWAY		
COUNTY STATE AID HIGHWAY	DIRT/UNIMPROVED			
COUNTY ROAD	OTHER			
TOWNSHIP ROAD	UNKNOWN			
UNORGANIZED TERRITORY ROAD				
OTHER ROADS				
Municipal	RAMP OR CONNECTOR			
Private	INTERSTATE EXIT			
National Monument	GREAT RIVER ROAD			
National Wildlife				
State Game				
State Park				
Preserve				
RAILROAD AND RAILWAY FEATURES		BOUNDARY FEATURES		
EMPIRE BUILDER STATION (AMTRAK)	TRIBAL LAND	STATE OF MINNESOTA	COUNTY	
NORTHSTAR STATION (COMPUTER)	STATE OF MINNESOTA	COUNTY	MUNICIPALITY	
LIGHT RAIL	UNORGANIZED TERRITORY	UNORGANIZED TERRITORY	FEDERAL ADJUSTED URBAN AREA (2014)	
BLUE LINE	FEDERAL ADJUSTED URBAN AREA (2014)	CIVIL TOWNSHIP	CONGRESSIONAL TOWNSHIP	
GREEN LINE	CIVIL TOWNSHIP	CONGRESSIONAL TOWNSHIP	SECTION	
INFRASTRUCTURE FEATURES		PUBLIC SERVICE FEATURES		
LONG BRIDGE (200' OR GREATER SPAN)	MNDOT OFFICE	MNDOT OFFICE	VOYAGEURS NATIONAL PARK	
MAJOR BRIDGE (20' TO 200' SPAN)	MNDOT TRUCK STATION	HIGHWAY PATROL DISTRICT OFFICE	BOUNDARY WATERS CANOE AREA WILDERNESS	
MINOR BRIDGE (5' TO 20' SPAN)	STATE TRAVEL INFORMATION CENTER	REST AREA (FULL SERVICE)	STATE PARK	
DAM	REST AREA (VAULT TOILET)	WAYSIDE (VAULT OR PIT TOILET)	REGIONAL PARK	
	PARK AND RIDE LOT	PORT OF ENTRY	NATIONAL FOREST	
	PUBLIC ACCESS POINT	MN STATE COLLEGE AND UNIVERSITY SYSTEM (MNSCU)	NATIONAL AND STATE FOREST	
	UNIVERSITY OF MN SYSTEM	FAIRGROUNDS	STATE FOREST	
			WILDLIFE REFUGUE AREA	
			WILDLIFE MANAGEMENT AREA	
			HYDROLOGIC FEATURES	
			RIVER OR STREAM (PERMANENT)	LAKE, POND OR RESERVOIR
			STREAM (INTERMITTENT)	DRAINAGE DITCH
				WETLAND
				ISLAND OR LAND
				REGIONAL WATERSHED
CITY CENTERS		CULTURAL FEATURES		
STATE CAPITAL	CITY CENTER	HISTORIC DISTRICT	HISTORIC SITE	
COUNTY SEAT	UNINCORPORATED COMMUNITY			



Population (U.S. Census 2010): 119



To request information from this document in an alternative format, call 651-366-4718 or 1-800-657-3774 (Greater Minnesota); 711 or 1-800-627-3529 (Minnesota Relay). You may also send an e-mail to ADAREquest.dot@state.mn.us. (Please request at least one week in advance.)