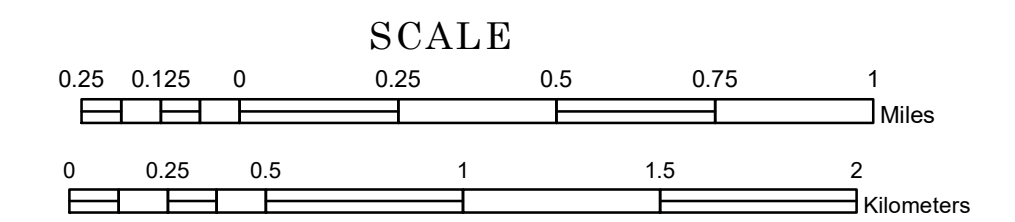


# TOWNSHIP OF TWO INLETS

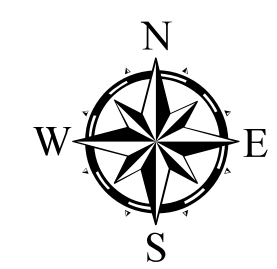
PREPARED BY THE  
MINNESOTA DEPARTMENT OF TRANSPORTATION  
OFFICE OF TRANSPORTATION SYSTEM MANAGEMENT

IN COOPERATION WITH  
U.S. DEPARTMENT OF TRANSPORTATION  
FEDERAL HIGHWAY ADMINISTRATION



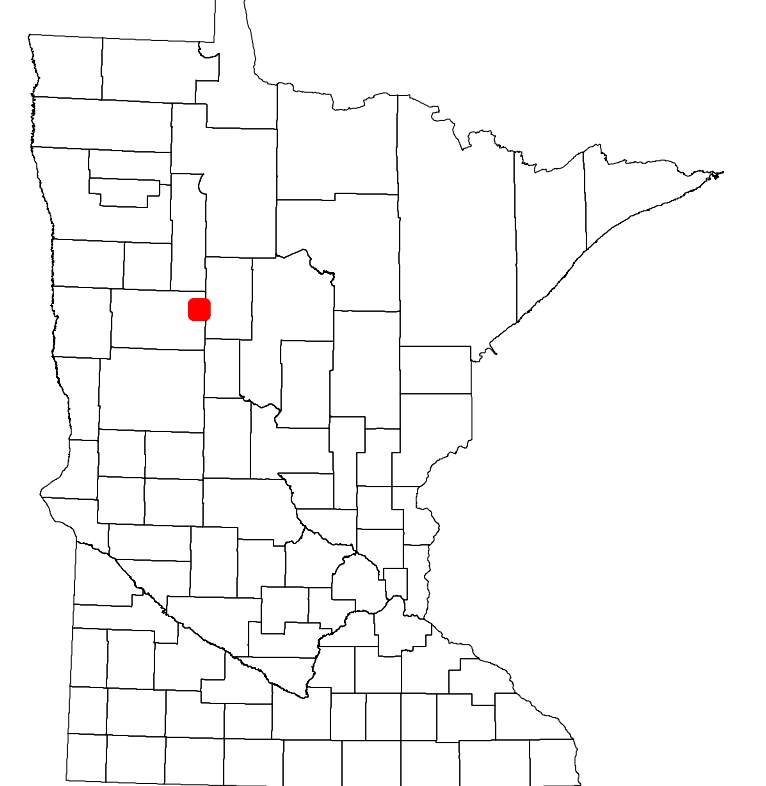
2022

Projection:  
Transverse Mercator  
NAD 1986  
UTM Zone 15

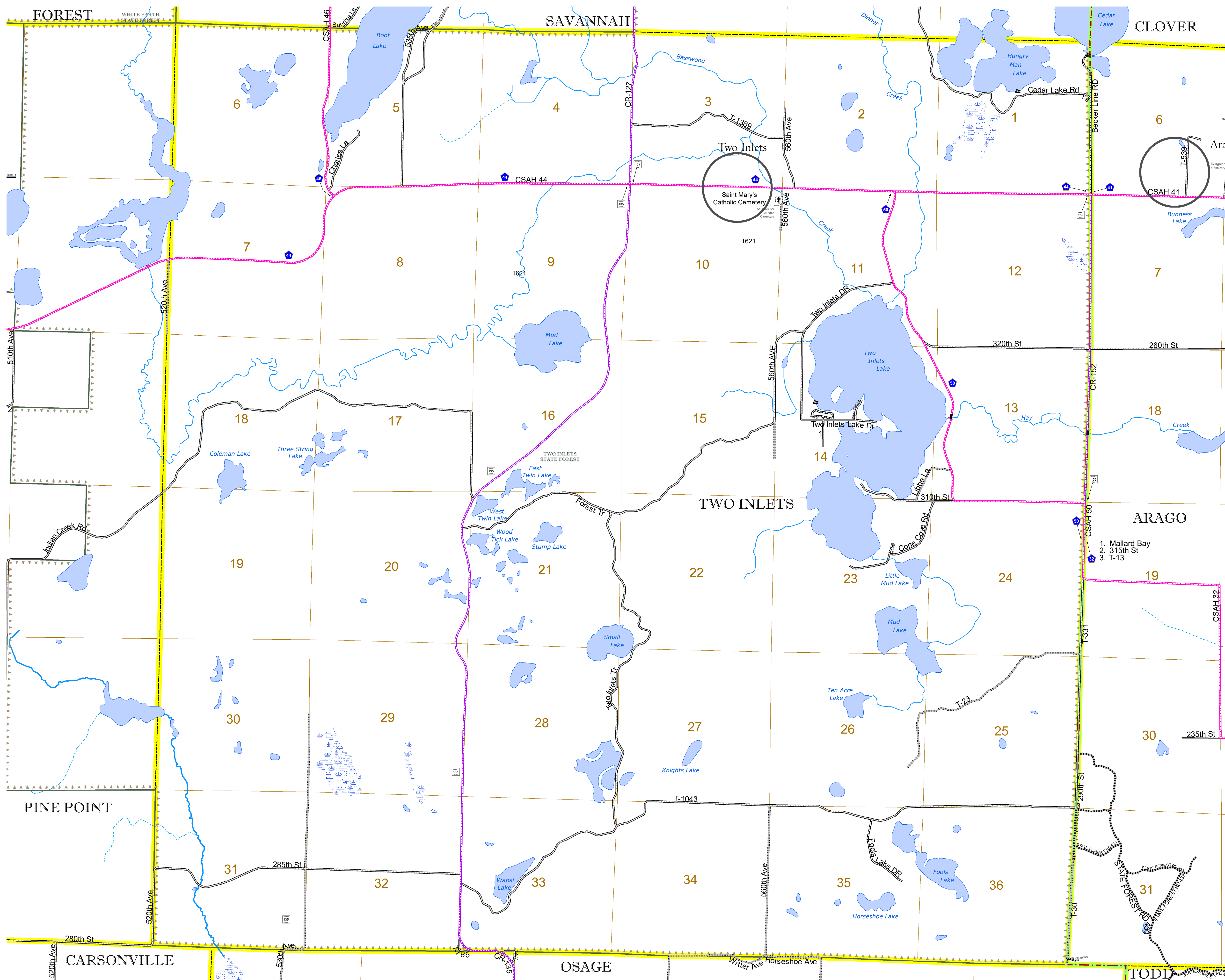


North American Datum  
of 1986

| ROAD AND ROADWAY FEATURES                      |                                       |  |
|--|---------------------------------------|--|
| INTERSTATE                                     | CONCRETE                              |  |
| US HIGHWAY                                     | BITUMINOUS                            |  |
| MN HIGHWAY                                     | GRAVEL                                |  |
| COUNTY STATE AID HIGHWAY                       | DIRT/UNIMPROVED                       |  |
| COUNTY ROAD                                    | OTHER                                 |  |
| TOWNSHIP ROAD                                  | UNKNOWN                               |  |
| UNORGANIZED TERRITORY ROAD                     |                                       |  |
| OTHER ROADS                                    | RAMP OR CONNECTOR                     |  |
| Municipal                                      | Private                               |  |
| National Monuments                             | State Forest                          |  |
| National Service                               | National Park                         |  |
| Military                                       | National Wildlife                     |  |
|  | State Game                            |  |
|  | State Park                            |  |
|  | Preserve                              |  |
| RAILROAD AND RAILWAY FEATURES                  |                                       |  |
| EMPIRE BUILDER STATION (AMTRAK)                | COMMERCIAL AIRPORT                    |  |
| NORTHSTAR STATION (COMPUTER)                   | GENERAL AIRPORT                       |  |
|  | AIRSTRIP                              |  |
|  | SEAPLANE                              |  |
|  | AIRPORT RUNWAY                        |  |
|  | BOUNDARY FEATURES                     |  |
|  | TRIBAL LAND                           |  |
|  | STATE OF MINNESOTA                    |  |
|  | COUNTY                                |  |
|  | MUNICIPALITY                          |  |
|  | UNORGANIZED TERRITORY                 |  |
|  | FEDERAL ADJUSTED URBAN AREA (2014)    |  |
|  | CIVIL TOWNSHIP                        |  |
|  | CONGRESSIONAL TOWNSHIP                |  |
|  | SECTION                               |  |
|  | MILITARY                              |  |
|  | VOYAGEURS NATIONAL PARK               |  |
|  | BOUNDARY WATERS CANOE AREA WILDERNESS |  |
|  | STATE PARK                            |  |
|  | REGIONAL PARK                         |  |
|  | NATIONAL FOREST                       |  |
|  | NATIONAL AND STATE FOREST             |  |
|  | STATE FOREST                          |  |
|  | NATIONAL TRAIL                        |  |
|  | WILDLIFE REFUGUE AREA                 |  |
|  | WILDLIFE MANAGEMENT AREA              |  |
|  | HYDROLOGIC FEATURES                   |  |
|  | RIVER OR STREAM (PERENNIAL)           |  |
|  | LAKE, POND OR RESERVOIR               |  |
|  | STREAM (INTERMITTENT)                 |  |
|  | DRAINAGE DITCH                        |  |
|  | WETLAND                               |  |
|  | ISLAND OR LAND                        |  |
|  | REGIONAL WATERSHED                    |  |
| CITY CENTERS                                   |                                       |  |
| STATE CAPITAL                                  | COUNTY SEAT                           |  |
| CITY CENTER                                    | UNINCORPORATED COMMUNITY              |  |
| PUBLIC SERVICE FEATURES                        |                                       |  |
| MNDOT OFFICE                                   | MNDOT TRUCK STATION                   |  |
| HIGHWAY PATROL DISTRICT OFFICE                 | STATE TRAVEL INFORMATION CENTER       |  |
| REST AREA (Vault Toilets)                      | REST AREA (Vault Toilets)             |  |
| WAYSIDE (Vault or Pit Toilets)                 | PARK AND RIDE LOT                     |  |
| PORT OF ENTRY                                  | PUBLIC ACCESS POINT                   |  |
| MN STATE COLLEGE AND UNIVERSITY SYSTEM (MNSCU) | UNIVERSITY OF MN SYSTEM               |  |
| FAIRGROUNDS                                    |                                       |  |
| CULTURAL FEATURES                              |                                       |  |
| STATE HISTORICAL MARKER                        | HISTORIC DISTRICT                     |  |
| HISTORIC SITE                                  | MONUMENT                              |  |



Population (U.S. Census 2010): 213



To request information from this document in an alternative format, call 651-366-4718 or 1-800-657-3774 (Greater Minnesota); 711 or 1-800-627-3529 (Minnesota Relay). You may also send an e-mail to ADARrequest.dot@state.mn.us. (Please request at least one week in advance.)