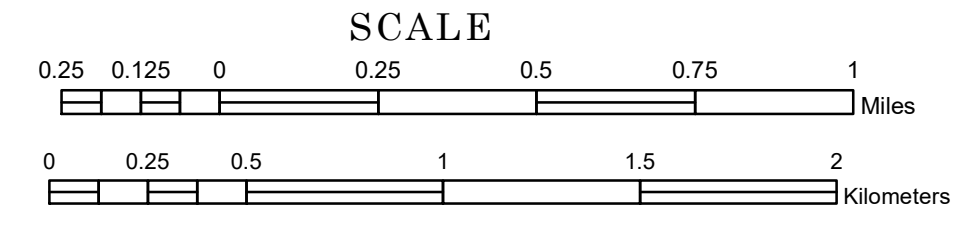


TOWNSHIP OF LEE

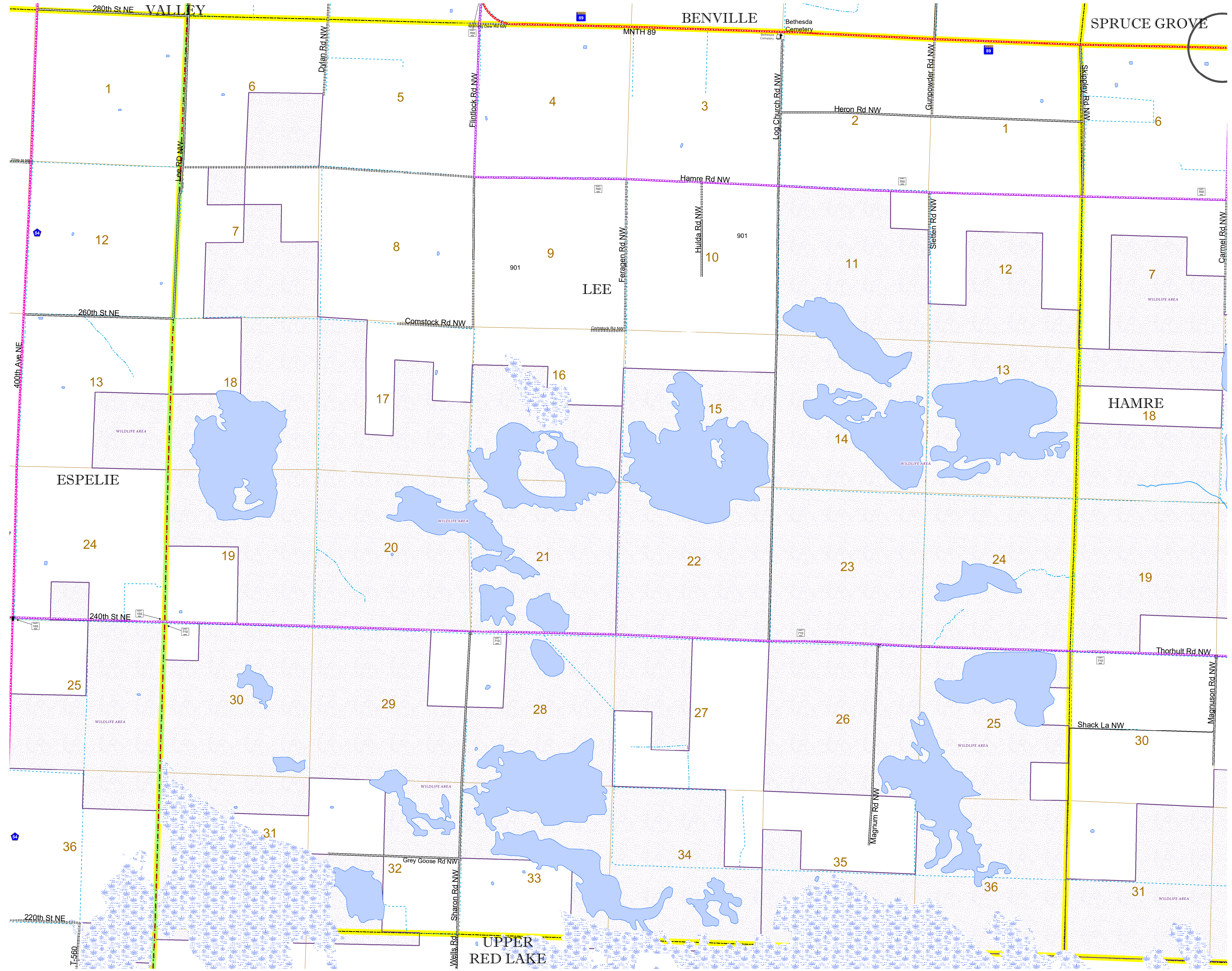
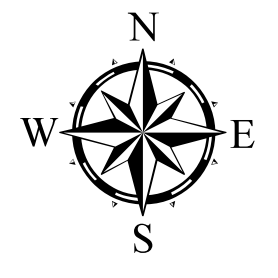
PREPARED BY THE
MINNESOTA DEPARTMENT OF TRANSPORTATION
OFFICE OF TRANSPORTATION SYSTEM MANAGEMENT

IN COOPERATION WITH
U.S. DEPARTMENT OF TRANSPORTATION
FEDERAL HIGHWAY ADMINISTRATION

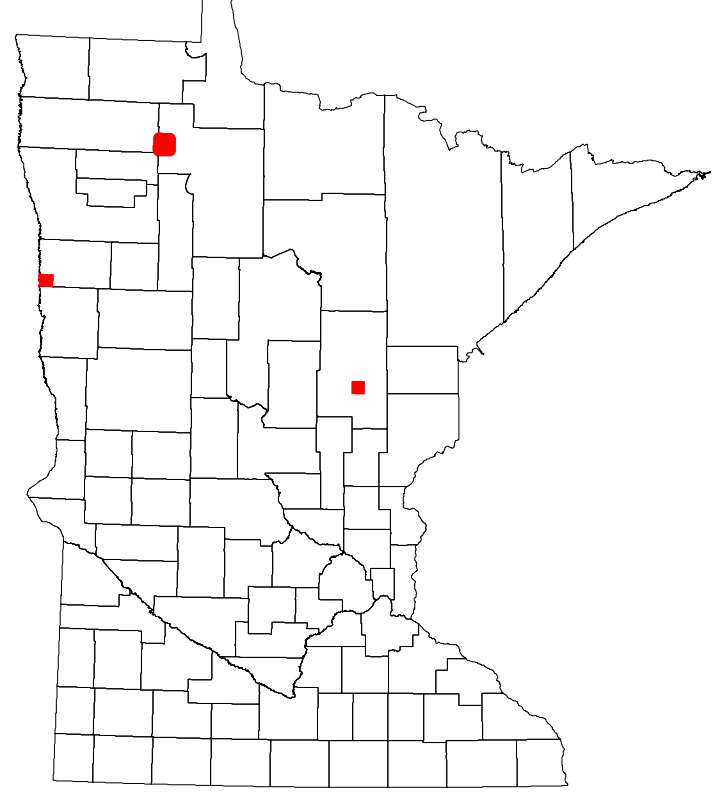


1 in = 1,600 ft
2022

Projection: Transverse Mercator NAD 1986 UTM Zone 15 North American Datum of 1986



ROAD AND ROADWAY FEATURES INTERSTATE US HIGHWAY MN HIGHWAY COUNTY STATE AID HIGHWAY COUNTY ROAD TOWNSHIP ROAD UNORGANIZED TERRITORY ROAD OTHER ROADS Municipal Private National Monument National Wildlife Refuge National Forest State Park Private State Forest State Game Preserve State Park Preserve	RAILROAD AND RAILWAY FEATURES EMPIRE BUILDER STATION (AMTRAK) NORTHSTAR STATION (COMMITTEE) LIGHT RAIL BLUE LINE GREEN LINE LONG BRIDGE (300' or Greater Span) MAJOR BRIDGE (20' to 300' Span) MINOR BRIDGE (5' to 20' Span) DAM LOCK AND DAM	AVIATION FEATURES COMMERCIAL AIRPORT GENERAL AIRPORT AIRSTRIP SEAPLANE AIRPORT RUNWAY	BOUNDARY FEATURES TRIBAL LAND STATE OF MINNESOTA COUNTY MUNICIPALITY UNORGANIZED TERRITORY FEDERAL ADJUSTED URBAN AREA (2014) CIVIL TOWNSHIP CONGRESSIONAL TOWNSHIP SECTION MILITARY VOYAGEURS NATIONAL PARK BOUNDARY WATERS CANOE AREA WILDERNESS STATE PARK REGIONAL PARK NATIONAL FOREST NATIONAL AND STATE FOREST STATE FOREST WILDLIFE REFUGE AREA WILDLIFE MANAGEMENT AREA HYDROLOGIC FEATURES RIVER OR STREAM (PERENNIAL) LAKE, POND OR RESERVOIR STREAM (INTERMITTENT) DRAINAGE DITCH WETLAND ISLAND OR LAND REGIONAL WATERSHED
CITY CENTERS STATE CAPITAL COUNTY SEAT CITY CENTER UNINCORPORATED COMMUNITY	PUBLIC SERVICE FEATURES MNDOT OFFICE MNDOT TRUCK STATION HIGHWAY PATROL DISTRICT OFFICE STATE TRAVEL INFORMATION CENTER REST AREA (Full Service) REST AREA (Vault Toilet) WAYSIDE (Vault or Pit Toilet) PARK AND RIDE LOT PORT OF ENTRY PUBLIC ACCESS POINT MN STATE COLLEGE AND UNIVERSITY SYSTEM (MNSCU) UNIVERSITY OF MN SYSTEM FAIRGROUNDS	INFRASTRUCTURE FEATURES RAMP OR CONNECTOR INTERSTATE EXIT GREAT RIVER ROAD	RAILROAD AND RAILWAY FEATURES RAMP OR CONNECTOR INTERSTATE EXIT GREAT RIVER ROAD



Population (U.S. Census 2010): 51

To request information from this document in an alternative format, call 651-366-4718 or 1-800-657-3774 (Greater Minnesota); 711 or 1-800-627-3529 (Minnesota Relay). You may also send an e-mail to ADArequest.dot@state.mn.us. (Please request at least one week in advance.)