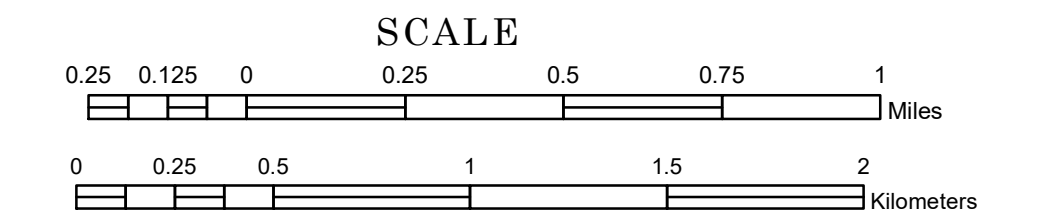


# TOWNSHIP OF TAYLOR

PREPARED BY THE  
MINNESOTA DEPARTMENT OF TRANSPORTATION  
OFFICE OF TRANSPORTATION SYSTEM MANAGEMENT

IN COOPERATION WITH  
U.S. DEPARTMENT OF TRANSPORTATION  
FEDERAL HIGHWAY ADMINISTRATION



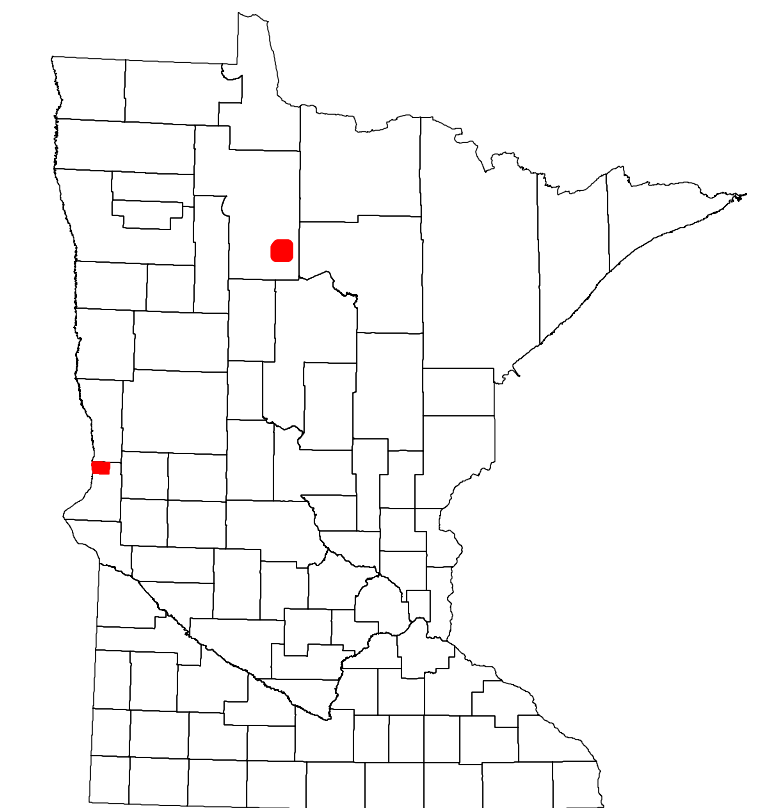
1 in = 1,600 ft  
**2022**

Projection:  
Transverse Mercator  
NAD 1986  
UTM Zone 15

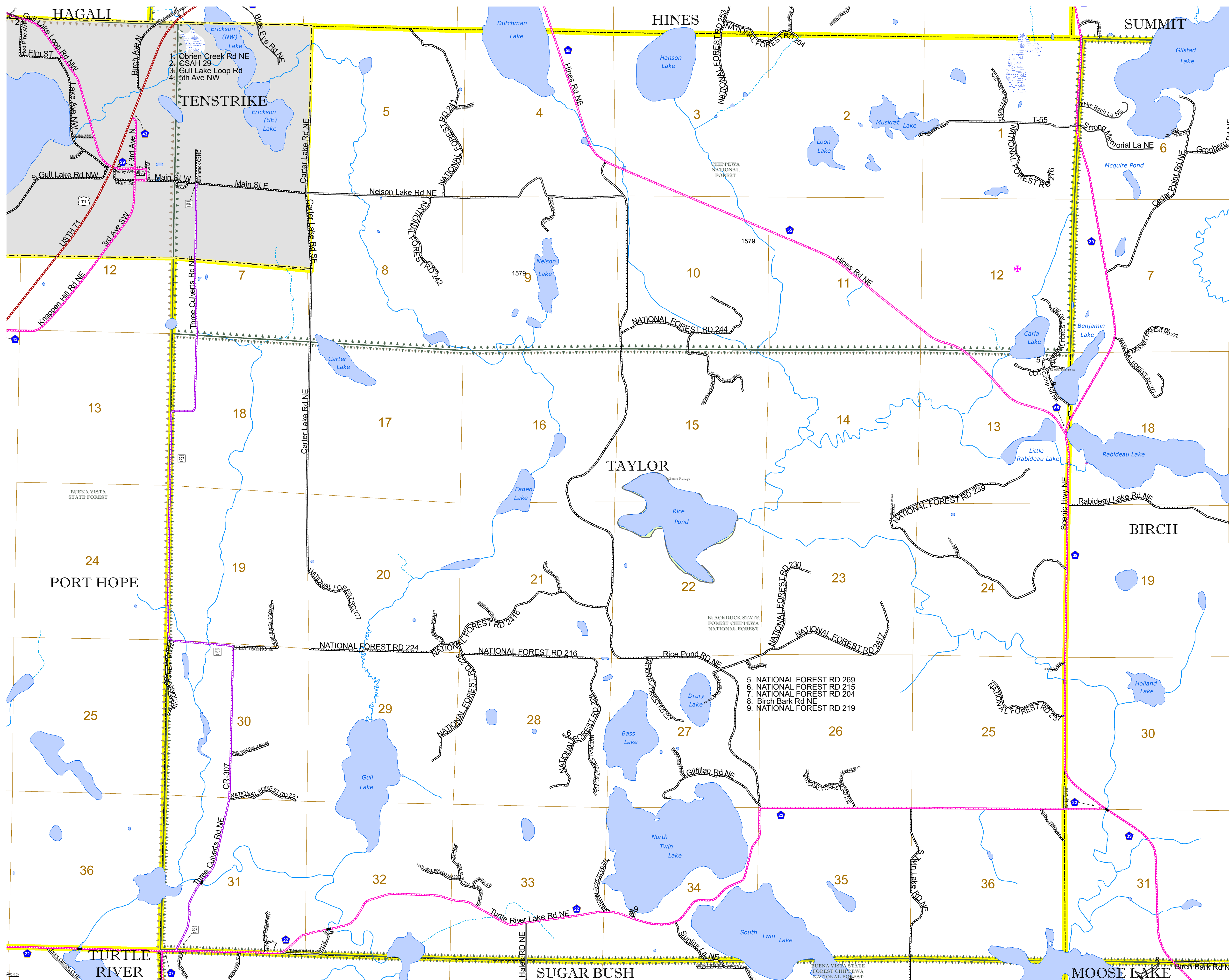


North American Datum  
of 1986

| ROAD AND ROADWAY FEATURES  |          | RAILROAD AND RAILWAY FEATURES |          | AVIATION FEATURES |          | BOUNDARY FEATURES                     |          |
|----------------------------|----------|-------------------------------|----------|-------------------|----------|---------------------------------------|----------|
| INTERSTATE                 | [Symbol] | CONCRETE                      | [Symbol] | RAMP OR CONNECTOR | [Symbol] | TRIBAL LAND                           | [Symbol] |
| US HIGHWAY                 | [Symbol] | GRAVEL                        | [Symbol] | GENERAL AIRPORT   | [Symbol] | STATE OF MINNESOTA                    | [Symbol] |
| MN HIGHWAY                 | [Symbol] | DIRT/UNIMPROVED               | [Symbol] | AIRSTRIP          | [Symbol] | COUNTY                                | [Symbol] |
| COUNTY STATE AID HIGHWAY   | [Symbol] | OTHER                         | [Symbol] | SEAPLANE          | [Symbol] | MUNICIPALITY                          | [Symbol] |
| COUNTY ROAD                | [Symbol] | UNKNOWN                       | [Symbol] | AIRPORT RUNWAY    | [Symbol] | UNORGANIZED TERRITORY                 | [Symbol] |
| TOWNSHIP ROAD              | [Symbol] |                               |          |                   |          | FEDERAL ADJUSTED URBAN AREA (2014)    | [Symbol] |
| UNORGANIZED TERRITORY ROAD | [Symbol] |                               |          |                   |          | CIVIL TOWNSHIP                        | [Symbol] |
| OTHER ROADS                | [Symbol] |                               |          |                   |          | CONGRESSIONAL TOWNSHIP                | [Symbol] |
| Municipal                  | [Symbol] |                               |          |                   |          | SECTION                               | [Symbol] |
| Private                    | [Symbol] |                               |          |                   |          | MILITARY                              | [Symbol] |
| National Monument          | [Symbol] |                               |          |                   |          | VOYAGEURS NATIONAL PARK               | [Symbol] |
| National Park              | [Symbol] |                               |          |                   |          | BOUNDARY WATERS CANOE AREA WILDERNESS | [Symbol] |
| National Wildlife Refuge   | [Symbol] |                               |          |                   |          | STATE PARK                            | [Symbol] |
| State Park                 | [Symbol] |                               |          |                   |          | REGIONAL PARK                         | [Symbol] |
| Preserve                   | [Symbol] |                               |          |                   |          | NATIONAL FOREST                       | [Symbol] |
|                            |          |                               |          |                   |          | NATIONAL AND STATE FOREST             | [Symbol] |
|                            |          |                               |          |                   |          | STATE FOREST                          | [Symbol] |
|                            |          |                               |          |                   |          | NATIONAL TRAIL                        | [Symbol] |
|                            |          |                               |          |                   |          | WILDLIFE REFUGUE AREA                 | [Symbol] |
|                            |          |                               |          |                   |          | WILDLIFE MANAGEMENT AREA              | [Symbol] |
|                            |          |                               |          |                   |          | HYDROLOGIC FEATURES                   | [Symbol] |
|                            |          |                               |          |                   |          | RIVER OR STREAM (PERMANENT)           | [Symbol] |
|                            |          |                               |          |                   |          | LAKE, POND OR RESERVOIR               | [Symbol] |
|                            |          |                               |          |                   |          | STREAM (INTERMITTENT)                 | [Symbol] |
|                            |          |                               |          |                   |          | DRAINAGE DITCH                        | [Symbol] |
|                            |          |                               |          |                   |          | WETLAND                               | [Symbol] |
|                            |          |                               |          |                   |          | ISLAND OR LAND                        | [Symbol] |
|                            |          |                               |          |                   |          | REGIONAL WATERSHED                    | [Symbol] |



Population (U.S. Census 2010): 104



To request information from this document in an alternative format, call 651-366-4718 or 1-800-657-3774 (Greater Minnesota); 711 or 1-800-627-3529 (Minnesota Relay). You may also send an e-mail to ADAREquest.dot@state.mn.us. (Please request at least one week in advance.)