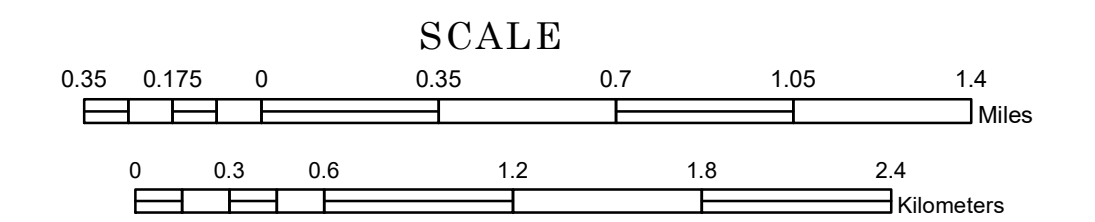


TOWNSHIP OF FOSTER

PREPARED BY THE
MINNESOTA DEPARTMENT OF TRANSPORTATION
OFFICE OF TRANSPORTATION SYSTEM MANAGEMENT

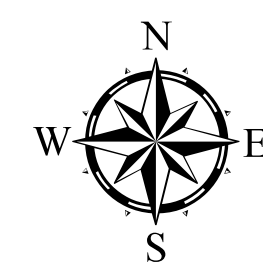
IN COOPERATION WITH
U.S. DEPARTMENT OF TRANSPORTATION
FEDERAL HIGHWAY ADMINISTRATION



1 in = 2,000 ft

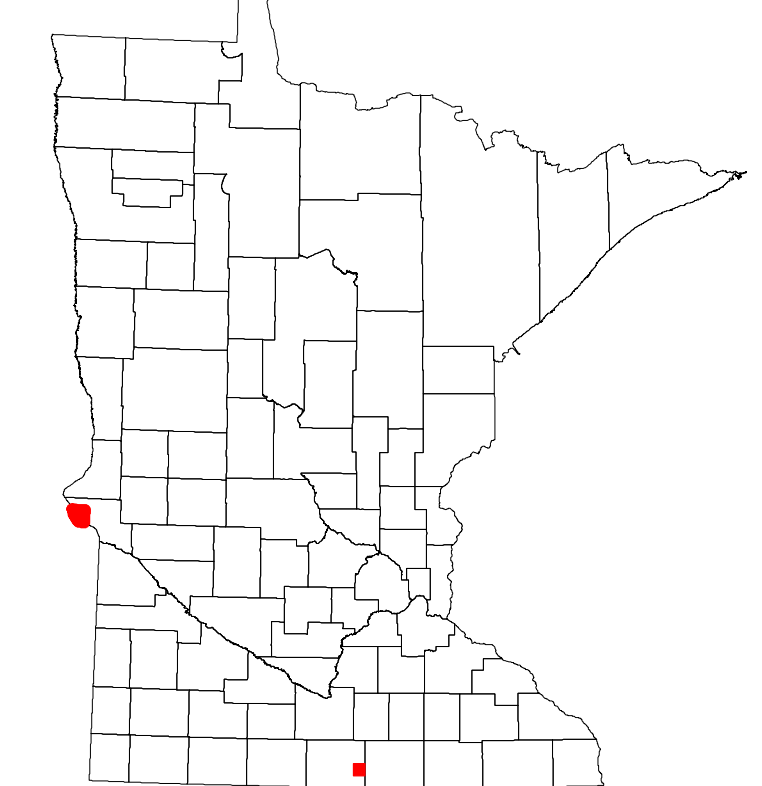
2022

Projection:
Transverse Mercator
NAD 1986
UTM Zone 15

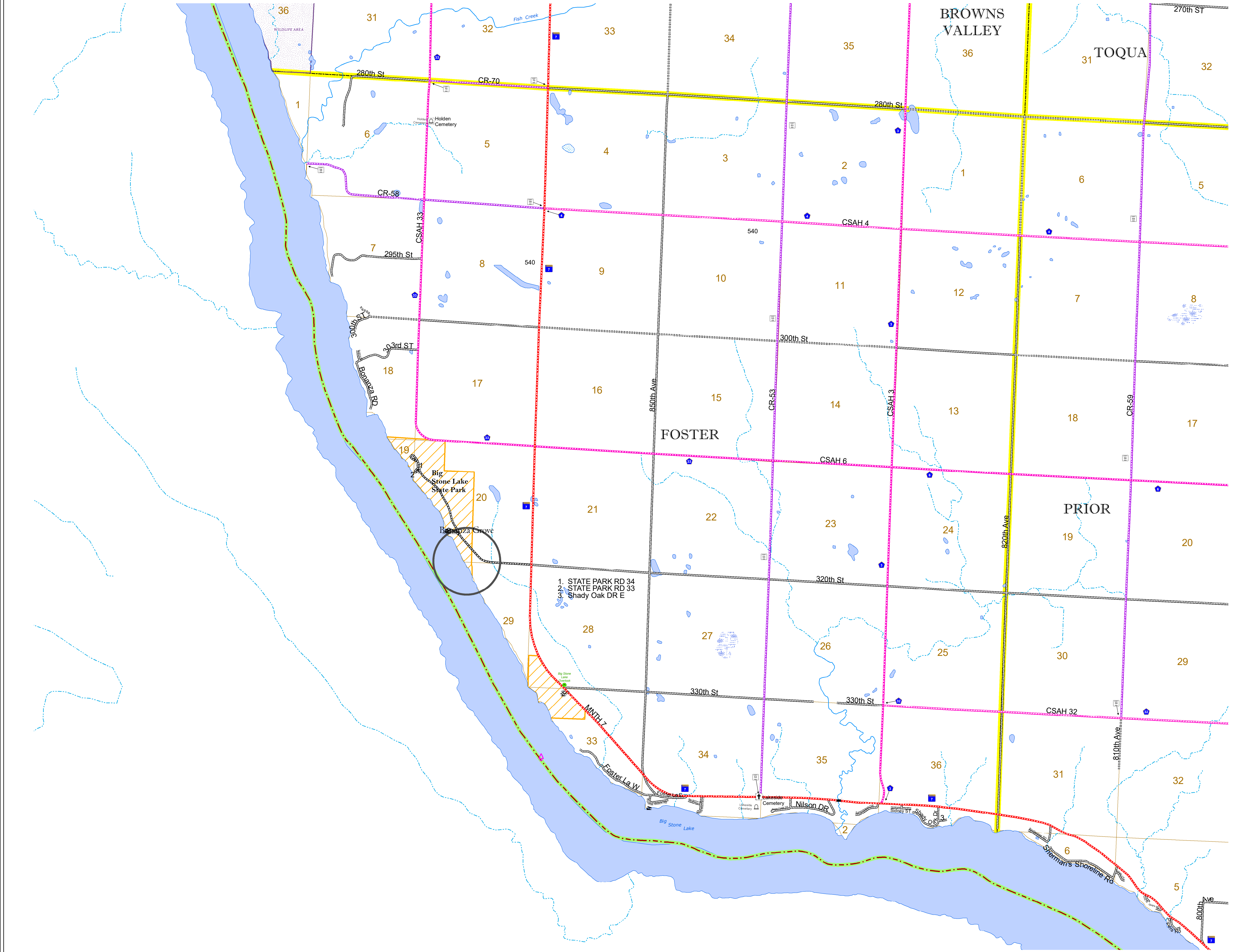


North American Datum
of 1986

ROAD AND ROADWAY FEATURES		RAILROAD AND RAILWAY FEATURES		INFRASTRUCTURE FEATURES		CITY CENTERS		PUBLIC SERVICE FEATURES		CULTURAL FEATURES	
INTERSTATE	CONCRETE	EMPIRE BUILDER STATION (AMTRAK)	COMMERCIAL AIRPORT	LONG BRIDGE (200' OR GREATER SPAN)	TRIBAL LAND	STATE CAPITAL	MILITARY	STATE HISTORICAL MARKER	STATE HISTORICAL DISTRICT	STATE HISTORICAL SITE	STATE HISTORICAL MONUMENT
US HIGHWAY	BITUMINOUS	NORTHSTAR STATION (COMMUTER)	GENERAL AIRPORT	MAJOR BRIDGE (20' TO 200' SPAN)	STATE OF MINNESOTA	COUNTY SEAT	VOYAGEURS NATIONAL PARK				
MN HIGHWAY	GRAVEL		AIRSTRIP	MINOR BRIDGE (5' TO 20' SPAN)	COUNTY	CITY CENTER	BOUNDARY NATURAL PARK				
COUNTY STATE AID HIGHWAY	DIRT/UNIMPROVED	LIGHT RAIL	SEAPLANE	DAM	MUNICIPALITY	HIGHWAY PATROL DISTRICT OFFICE	NATIONAL FOREST				
TOWNSHIP ROAD	OTHER	BLUE LINE	AIRPORT RUNWAY	LOCK AND DAM	UNINCORPORATED TOWNSHIP	STATE TRAVEL INFORMATION CENTER	NATIONAL AND STATE FOREST				
COUNTY ROAD	UNKNOWN	GREEN LINE			CIVIL TOWNSHIP	REST AREA (FULL SERVICE)	STATE FOREST				
UNORGANIZED TERRITORY ROAD					CONGRESSIONAL TOWNSHIP	REST AREA (VAULT TOILET)	WILDLIFE REFUGUE AREA				
OTHER ROADS					SECTION	WAYSIDE (VAULT OR PITY TOILET)	WILDLIFE MANAGEMENT AREA				
Municipal						PARK AND RIDE LOT	WILDLIFE MANAGEMENT AREA				
Private						PORT OF ENTRY	HYDROLOGIC FEATURES				
National Monument						PUBLIC ACCESS POINT	RIVER OR STREAM (PERENNIAL)				
National Wildlife Refuge						MN STATE COLLEGE AND UNIVERSITY SYSTEM (MNSCU)	LAKE, POND OR RESERVOIR				
State Game Preserve						UNIVERSITY OF MN SYSTEM	STREAM (INTERMITTENT)				
						FAIRGROUNDS	DRAINAGE DITCH				
							WETLAND				
							ISLAND OR LAND				
							REGIONAL WATERSHED				



Population (U.S. Census 2010): 112



To request information from this document in an alternative format, call 651-366-4718 or 1-800-657-3774 (Greater Minnesota); 711 or 1-800-627-3529 (Minnesota Relay). You may also send an e-mail to ADAREquest.dot@state.mn.us. (Please request at least one week in advance.)