

TOWNSHIP OF MALTA

PREPARED BY THE
MINNESOTA DEPARTMENT OF TRANSPORTATION
OFFICE OF TRANSPORTATION SYSTEM MANAGEMENT

IN COOPERATION WITH
U.S. DEPARTMENT OF TRANSPORTATION
FEDERAL HIGHWAY ADMINISTRATION



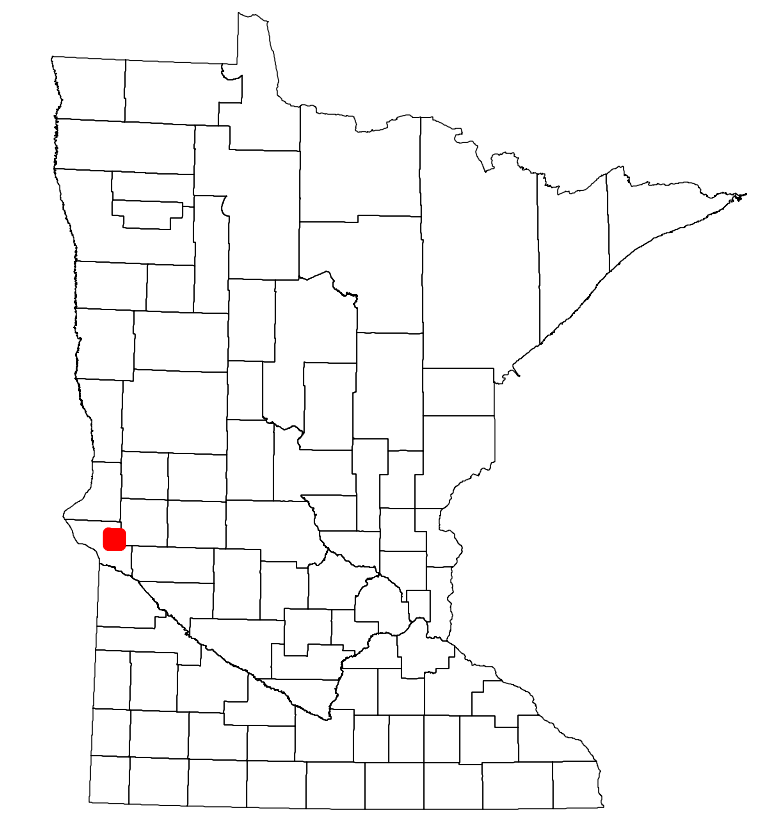
2022

Projection:
Transverse Mercator
NAD 1986
UTM Zone 15

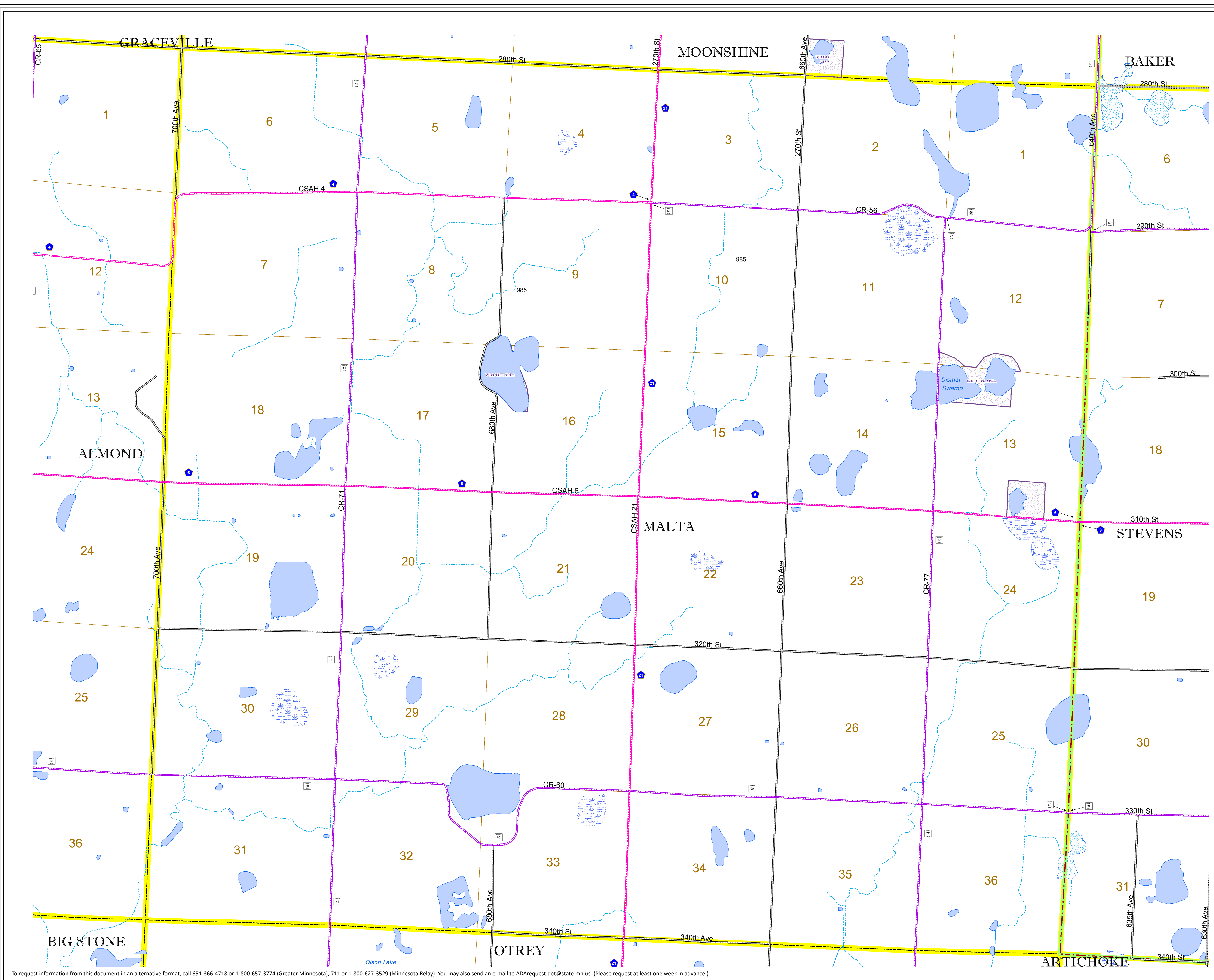


North American Datum
of 1986

ROAD AND ROADWAY FEATURES		AVIATION FEATURES	
INTERSTATE	CONCRETE	COMMERCIAL AIRPORT	GENERAL AIRPORT
US HIGHWAY	BITUMINOUS	AIRSTRIP	SEAPLANE
MN HIGHWAY	GRAVEL	AIRPORT RUNWAY	
COUNTY STATE AID HIGHWAY	DIRT/UNIMPROVED		
COUNTY ROAD	OTHER		
TOWNSHIP ROAD	UNKNOWN		
UNORGANIZED TERRITORY ROAD			
OTHER ROADS			
Municipal	RAMP OR CONNECTOR		
Private	INTERSTATE EXIT		
National Monument	GREAT RIVER ROAD		
National Park			
National Wildlife			
State Game			
State Park			
Preserve			
RAILROAD AND RAILWAY FEATURES		BOUNDARY FEATURES	
EMPIRE BUILDER STATION (AMTRAK)	TRIBAL LAND	STATE OF MINNESOTA	COUNTY
NORTHSTAR STATION (COMPUTER)		MUNICIPALITY	UNORGANIZED TERRITORY
LIGHT RAIL		FEDERAL ADJUSTED URBAN AREA (2014)	CIVIL TOWNSHIP
BLUE LINE		CONGRESSIONAL TOWNSHIP	SECTION
GREEN LINE		MILITARY	VOYAGEURS NATIONAL PARK
INFRASTRUCTURE FEATURES			BOUNDARY WATERS CANOE AREA WILDERNESS
LONG BRIDGE (200' OR GREATER SPAN)			STATE PARK
MAJOR BRIDGE (20' TO 200' SPAN)			REGIONAL PARK
MINOR BRIDGE (5' TO 20' SPAN)			NATIONAL FOREST
DAM			NATIONAL AND STATE FOREST
LOCK AND DAM			STATE FOREST
CITY CENTERS			NATIONAL TRAIL
STATE CAPITAL			WILDLIFE REFUGUE AREA
COUNTY SEAT			WILDLIFE MANAGEMENT AREA
CITY CENTER			HYDROLOGIC FEATURES
UNINCORPORATED COMMUNITY			RIVER OR STREAM (PERMANENT)
PUBLIC SERVICE FEATURES			LAKE, POND OR RESERVOIR
MNDOT OFFICE			STREAM (INTERMITTENT)
MNDOT TRUCK STATION			DRAINAGE DITCH
HIGHWAY PATROL DISTRICT OFFICE			WETLAND
STATE TRAVEL INFORMATION CENTER			ISLAND OR LAND
REST AREA (FULL SERVICE)			REGIONAL WATERSHED
REST AREA (VAULT TOILET)			
WAYSIDE (VAULT OR PIT TOILET)			
PARK AND RIDE LOT			
PORT OF ENTRY			
PUBLIC ACCESS POINT			
MN STATE COLLEGE AND UNIVERSITY SYSTEM (MNSCU)			
UNIVERSITY OF MN SYSTEM			
FAIRGROUNDS			
CULTURAL FEATURES			
STATE HISTORICAL MARKER			
HISTORIC DISTRICT			
HISTORIC SITE			
MONUMENT			



Population (U.S. Census 2010): 98



To request information from this document in an alternative format, call 651-366-4718 or 1-800-657-3774 (Greater Minnesota); 711 or 1-800-627-3529 (Minnesota Relay). You may also send an e-mail to ADARquest.dot@state.mn.us. (Please request at least one week in advance.)