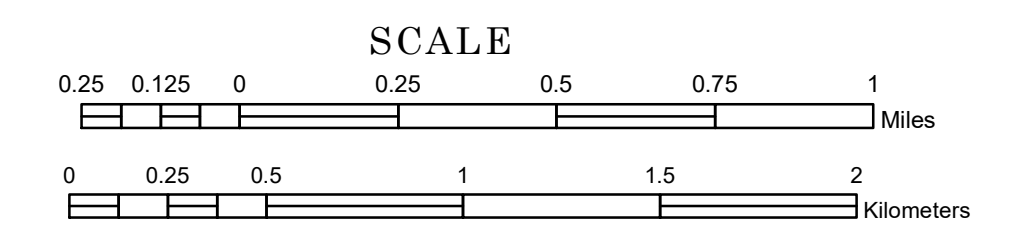


# TOWNSHIP OF BLACKHOOF

PREPARED BY THE  
MINNESOTA DEPARTMENT OF TRANSPORTATION  
OFFICE OF TRANSPORTATION SYSTEM MANAGEMENT

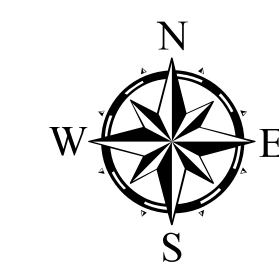
IN COOPERATION WITH  
U.S. DEPARTMENT OF TRANSPORTATION  
FEDERAL HIGHWAY ADMINISTRATION



1 in = 1,600 ft

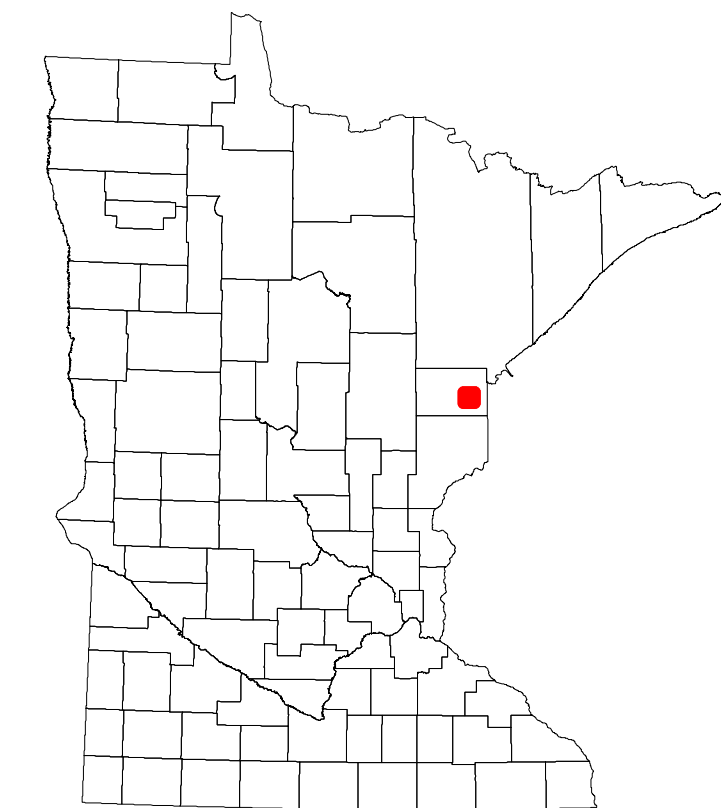
2022

Projection:  
Transverse Mercator  
NAD 1986  
UTM Zone 15

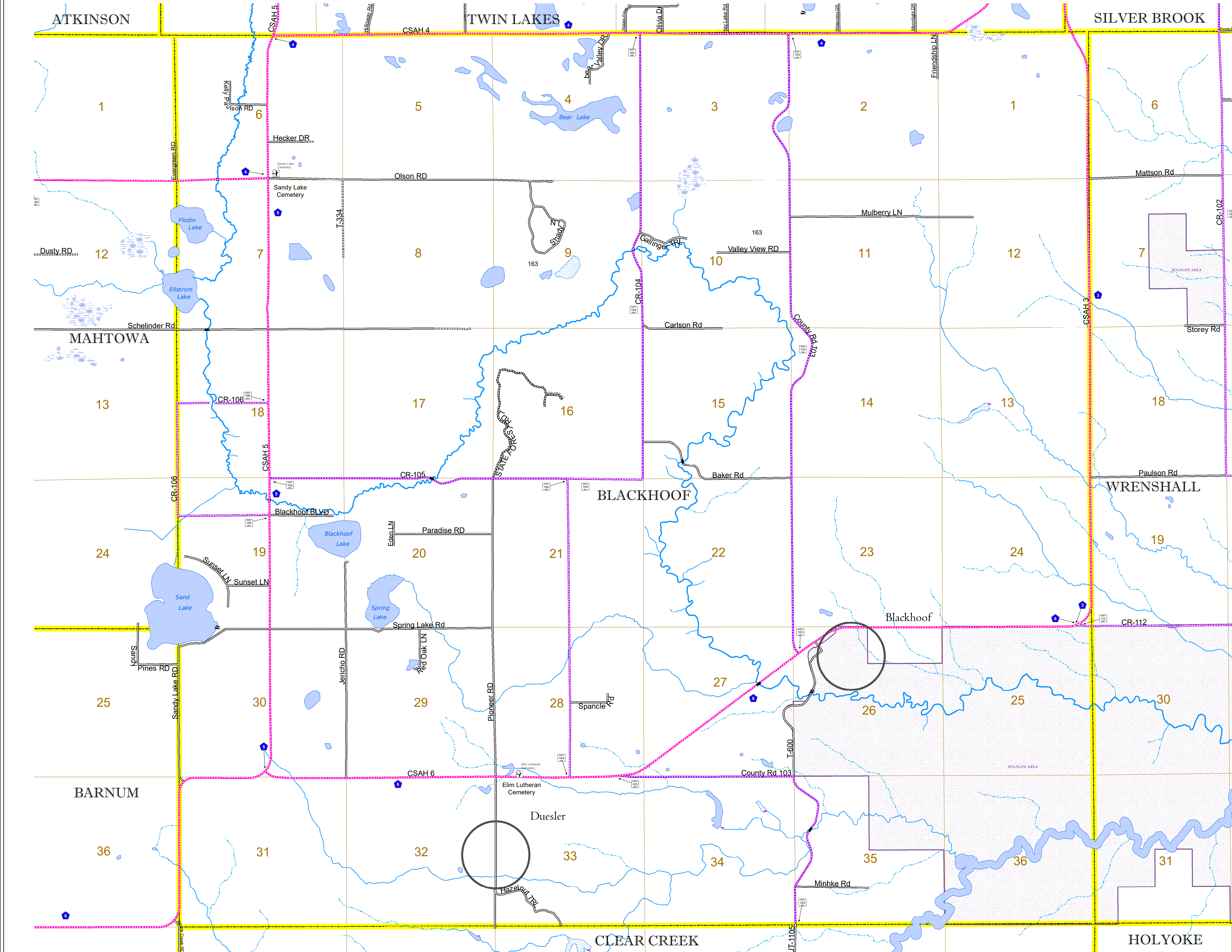


North American Datum  
of 1986

ROAD AND ROADWAY FEATURES		AVIATION FEATURES	
INTERSTATE	CONCRETE	COMMERCIAL AIRPORT	GENERAL AIRPORT
US HIGHWAY	BITUMINOUS	AIRSTRIP	SEAPLANE
MN HIGHWAY	GRAVEL	AIRPORT RUNWAY	TRIAL LAND
COUNTY STATE AID HIGHWAY	DIRT/UNIMPROVED	INTERSTATE EXIT	STATE OF MINNESOTA
COUNTY ROAD	OTHER	UNINCORPORATED COMMUNITY	COUNTY
TOWNSHIP ROAD	UNKNOWN	CITY CENTER	MUNICIPALITY
UNORGANIZED TERRITORY ROAD		CITY CENTER	UNINCORPORATED COMMUNITY
OTHER ROADS		CITY CENTER	UNINCORPORATED COMMUNITY
Municipal		CITY CENTER	UNINCORPORATED COMMUNITY
Private		CITY CENTER	UNINCORPORATED COMMUNITY
National Monument		CITY CENTER	UNINCORPORATED COMMUNITY
State Forest		CITY CENTER	UNINCORPORATED COMMUNITY
National Wildlife Refuge		CITY CENTER	UNINCORPORATED COMMUNITY
State Game		CITY CENTER	UNINCORPORATED COMMUNITY
State Park		CITY CENTER	UNINCORPORATED COMMUNITY
Preserve		CITY CENTER	UNINCORPORATED COMMUNITY
RAILROAD AND RAILWAY FEATURES		BOUNDARY FEATURES	
EMPIRE BUILDER STATION (ATRAK)	COMMERCIAL AIRPORT	TRIBAL LAND	STATE OF MINNESOTA
NORTHSTAR STATION (COMMITTEE)	GENERAL AIRPORT	COUNTY	MUNICIPALITY
LIGHT RAIL	AIRSTRIP	UNINCORPORATED COMMUNITY	CITY CENTER
BLUE LINE	SEAPLANE	CITY CENTER	UNINCORPORATED COMMUNITY
GREEN LINE	AIRPORT RUNWAY	CITY CENTER	UNINCORPORATED COMMUNITY
INFRASTRUCTURE FEATURES		HYDROLOGIC FEATURES	
LONG BRIDGE (200' OR GREATER SPAN)	COMMERCIAL AIRPORT	WILDLIFE REFUGE AREA	WILDLIFE MANAGEMENT AREA
MAJOR BRIDGE (20' TO 200' SPAN)	GENERAL AIRPORT	WILDLIFE REFUGE AREA	WILDLIFE MANAGEMENT AREA
MINOR BRIDGE (5' TO 20' SPAN)	AIRSTRIP	RIVER OR STREAM (PERMANENT)	LAKE, POND OR RESERVOIR
DAM	SEAPLANE	LAKE, POND OR RESERVOIR	STREAM (INTERMITTENT)
LOCK AND DAM	AIRPORT RUNWAY	STREAM (INTERMITTENT)	DRAINAGE DITCH
CITY CENTERS		CULTURAL FEATURES	
STATE CAPITAL	COMMERCIAL AIRPORT	STATE HISTORICAL MARKER	HISTORIC DISTRICT
COUNTY SEAT	GENERAL AIRPORT	HISTORIC DISTRICT	HISTORIC SITE
CITY CENTER	AIRSTRIP	HISTORIC SITE	MONUMENT
UNINCORPORATED COMMUNITY	SEAPLANE	MONUMENT	
PUBLIC SERVICE FEATURES		HYDROLOGIC FEATURES	
MNDOT OFFICE	COMMERCIAL AIRPORT	WILDLIFE REFUGE AREA	WILDLIFE MANAGEMENT AREA
MNDOT TRUCK STATION	GENERAL AIRPORT	RIVER OR STREAM (PERMANENT)	LAKE, POND OR RESERVOIR
HIGHWAY PATROL DISTRICT OFFICE	AIRSTRIP	LAKE, POND OR RESERVOIR	STREAM (INTERMITTENT)
STATE TRAVEL INFORMATION CENTER	SEAPLANE	STREAM (INTERMITTENT)	DRAINAGE DITCH
REST AREA (FULL SERVICE)	AIRPORT RUNWAY	DRAINAGE DITCH	WETLAND
REST AREA (VAULT TOILET)	TRIAL LAND	WETLAND	ISLAND OR LAND
WAYSIDE (VAULT OR PIT TOILET)	STATE OF MINNESOTA	ISLAND OR LAND	REGIONAL WATERSHED
PARK AND RIDE LOT	COUNTY	REGIONAL WATERSHED	
PORT OF ENTRY	MUNICIPALITY		
PUBLIC ACCESS POINT	UNINCORPORATED COMMUNITY		
MN STATE COLLEGE AND UNIVERSITY SYSTEM (MNSCU)	CITY CENTER		
UNIVERSITY OF MN SYSTEM	CITY CENTER		
FAIRGROUNDS	CITY CENTER		



Population (U.S. Census 2010): 893



To request information from this document in an alternative format, call 651-366-4718 or 1-800-657-3774 (Greater Minnesota); 711 or 1-800-627-3529 (Minnesota Relay). You may also send an e-mail to ADArequest.dot@state.mn.us. (Please request at least one week in advance.)