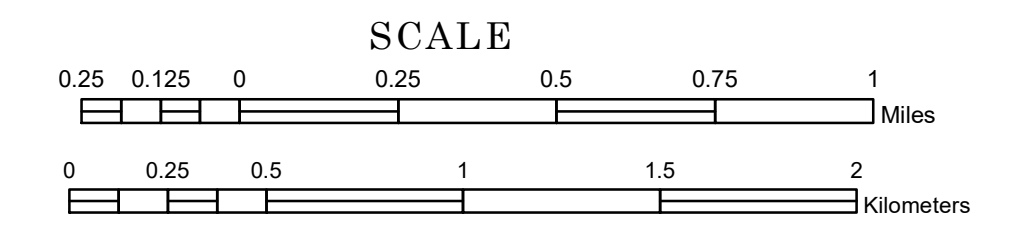


# TOWNSHIP OF MANDT

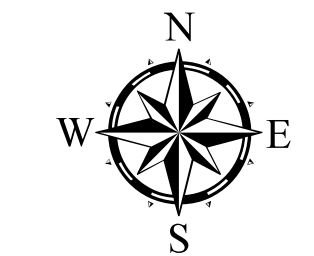
PREPARED BY THE  
MINNESOTA DEPARTMENT OF TRANSPORTATION  
OFFICE OF TRANSPORTATION SYSTEM MANAGEMENT

IN COOPERATION WITH  
U.S. DEPARTMENT OF TRANSPORTATION  
FEDERAL HIGHWAY ADMINISTRATION



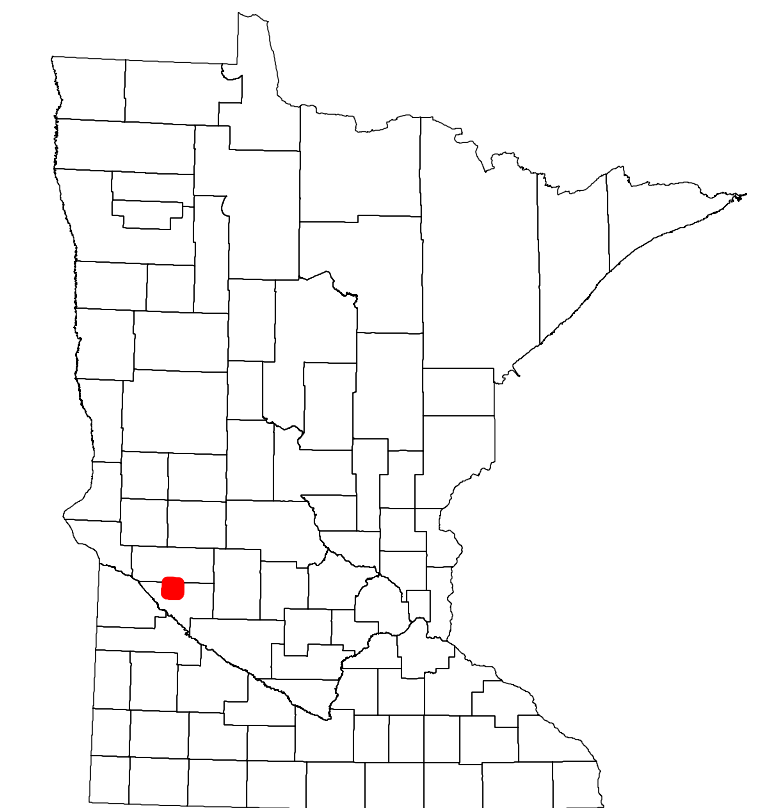
2022

Projection:  
Transverse Mercator  
NAD 1986  
UTM Zone 15

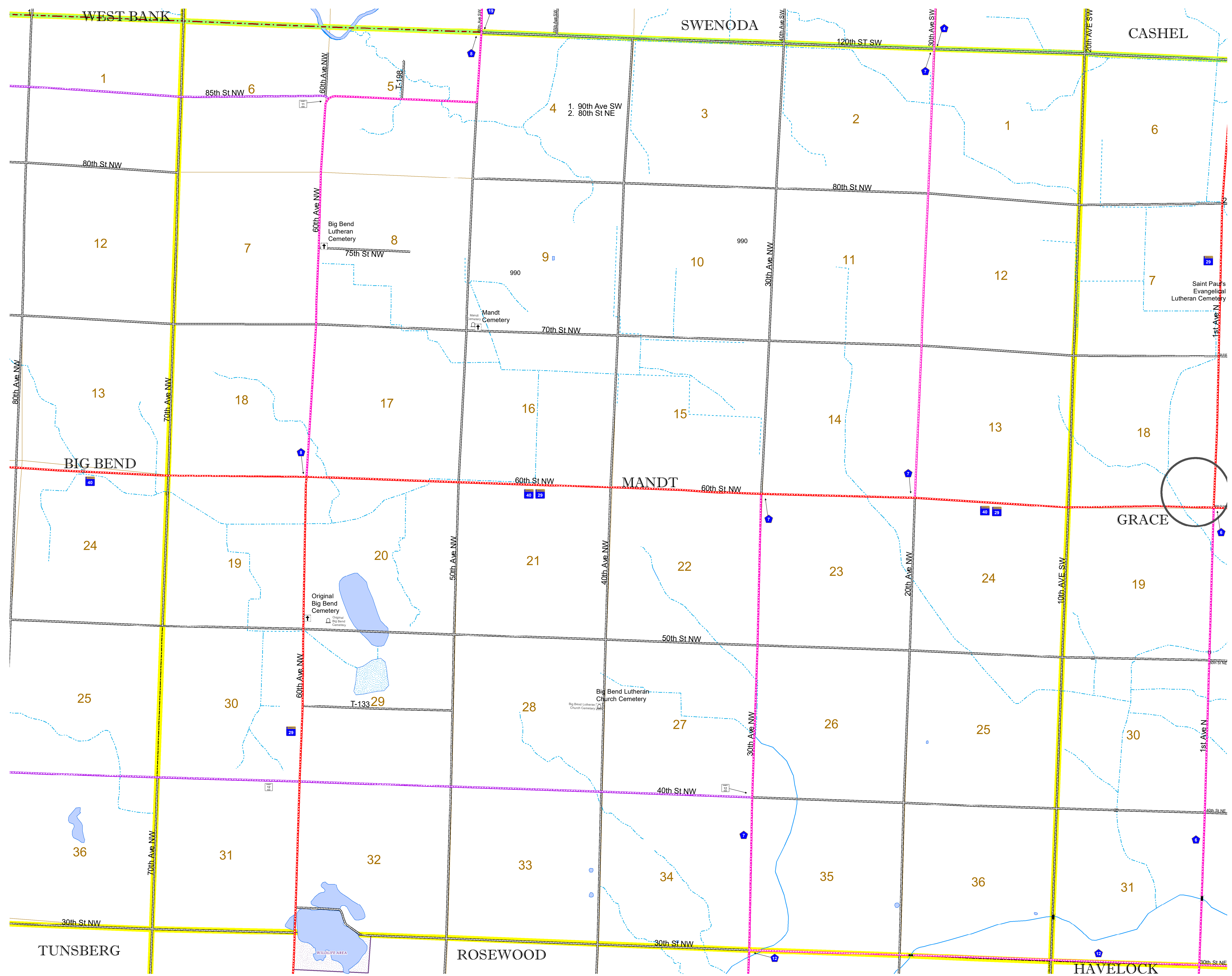


North American Datum  
of 1986

ROAD AND ROADWAY FEATURES		RAILROAD AND RAILWAY FEATURES		AVIATION FEATURES		BOUNDARY FEATURES	
INTERSTATE	CONCRETE	RAILWAY	COMMERCIAL AIRPORT	TRIBAL LAND	TRIBAL LAND	STATE OF MINNESOTA	STATE OF MINNESOTA
US HIGHWAY	BITUMINOUS	EMPIRE BUILDER STATION (AMTRAK)	GENERAL AIRPORT	STATE OF MINNESOTA	STATE OF MINNESOTA	COUNTY	COUNTY
MN HIGHWAY	GRAVEL	NORTHSTAR STATION (COMPUTER)	AIRSTRIP	COUNTY	COUNTY	MUNICIPALITY	MUNICIPALITY
COUNTY STATE AID HIGHWAY	DIRT/UNIMPROVED	LIGHT RAIL	SEAPLANE	MUNICIPALITY	MUNICIPALITY	UNORGANIZED TERRITORY	UNORGANIZED TERRITORY
COUNTY ROAD	OTHER	BLUE LINE	AIRPORT RUNWAY	UNORGANIZED TERRITORY	UNORGANIZED TERRITORY	FEDERAL ADJUSTED URBAN AREA (2014)	FEDERAL ADJUSTED URBAN AREA (2014)
TOWNSHIP ROAD	UNKNOWN	GREEN LINE		CIVIL TOWNSHIP	CIVIL TOWNSHIP	CONGRESSIONAL TOWNSHIP	CONGRESSIONAL TOWNSHIP
UNORGANIZED TERRITORY ROAD				CITY TOWNSHIP	CITY TOWNSHIP	SECTION	SECTION
OTHER ROADS				STATE CAPITAL	STATE CAPITAL	MILITARY	MILITARY
MUNICIPAL				COUNTY SEAT	COUNTY SEAT	VOYAGEURS NATIONAL PARK	VOYAGEURS NATIONAL PARK
PRIVATE				CITY CENTER	CITY CENTER	BOUNDARY WATERS CANOE AREA WILDERNESS	BOUNDARY WATERS CANOE AREA WILDERNESS
NATIONAL MONUMENT				UNINCORPORATED COMMUNITY	UNINCORPORATED COMMUNITY	STATE PARK	STATE PARK
NATIONAL FOREST						REGIONAL PARK	REGIONAL PARK
NATIONAL WILDLIFE REFUGUE						NATIONAL FOREST	NATIONAL FOREST
STATE PARK						NATIONAL AND STATE FOREST	NATIONAL AND STATE FOREST
STATE FOREST						STATE FOREST	STATE FOREST
STATE FOREST						WILDLIFE REFUGUE AREA	WILDLIFE REFUGUE AREA
WILDLIFE REFUGUE AREA						WILDLIFE MANAGEMENT AREA	WILDLIFE MANAGEMENT AREA
WILDLIFE MANAGEMENT AREA						HYDROLOGIC FEATURES	HYDROLOGIC FEATURES
HYDROLOGIC FEATURES						RIVER OR STREAM (PERMANENT)	RIVER OR STREAM (PERMANENT)
RIVER OR STREAM (PERMANENT)						LAKE, POND OR RESERVOIR	LAKE, POND OR RESERVOIR
LAKE, POND OR RESERVOIR						STREAM (INTERMITTENT)	STREAM (INTERMITTENT)
STREAM (INTERMITTENT)						DRAINAGE DITCH	DRAINAGE DITCH
DRAINAGE DITCH						WETLAND	WETLAND
WETLAND						ISLAND OR LAND	ISLAND OR LAND
ISLAND OR LAND						REGIONAL WATERSHED	REGIONAL WATERSHED
REGIONAL WATERSHED							



Population (U.S. Census 2010): 152



To request information from this document in an alternative format, call 651-366-4718 or 1-800-657-3774 (Greater Minnesota); 711 or 1-800-627-3529 (Minnesota Relay). You may also send an e-mail to ADRequest.dot@state.mn.us. (Please request at least one week in advance.)