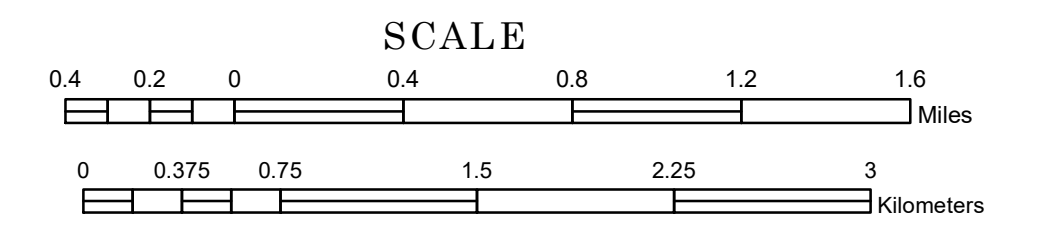


# TOWNSHIP OF SPARTA

PREPARED BY THE  
MINNESOTA DEPARTMENT OF TRANSPORTATION  
OFFICE OF TRANSPORTATION SYSTEM MANAGEMENT

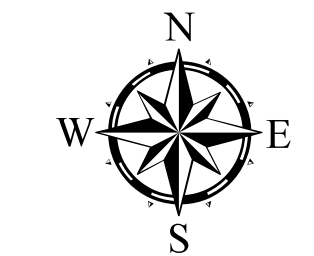
IN COOPERATION WITH  
U.S. DEPARTMENT OF TRANSPORTATION  
FEDERAL HIGHWAY ADMINISTRATION



1 in = 2,400 ft

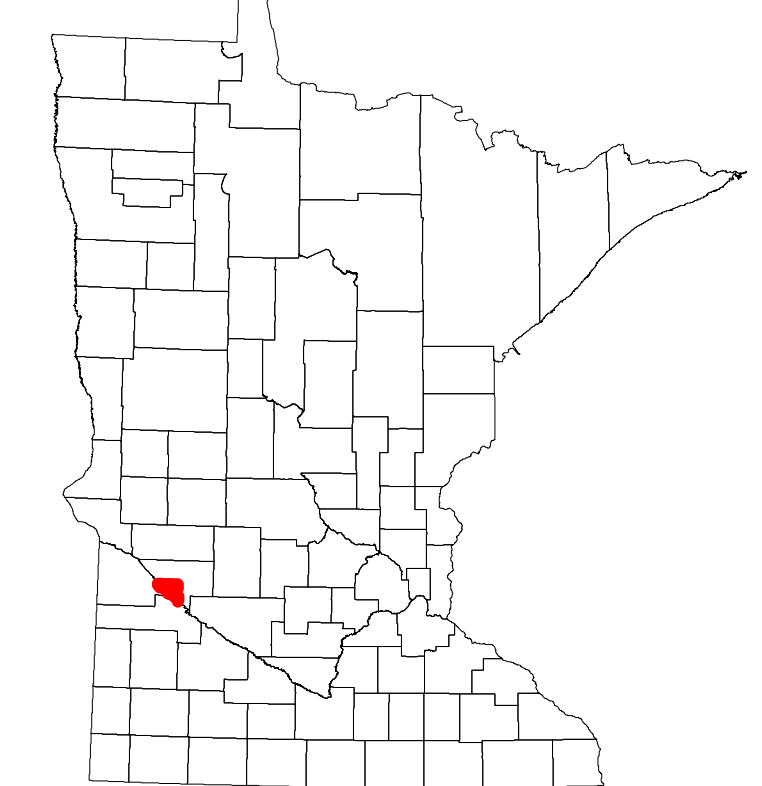
2022

Projection:  
Transverse Mercator  
NAD 1986  
UTM Zone 15

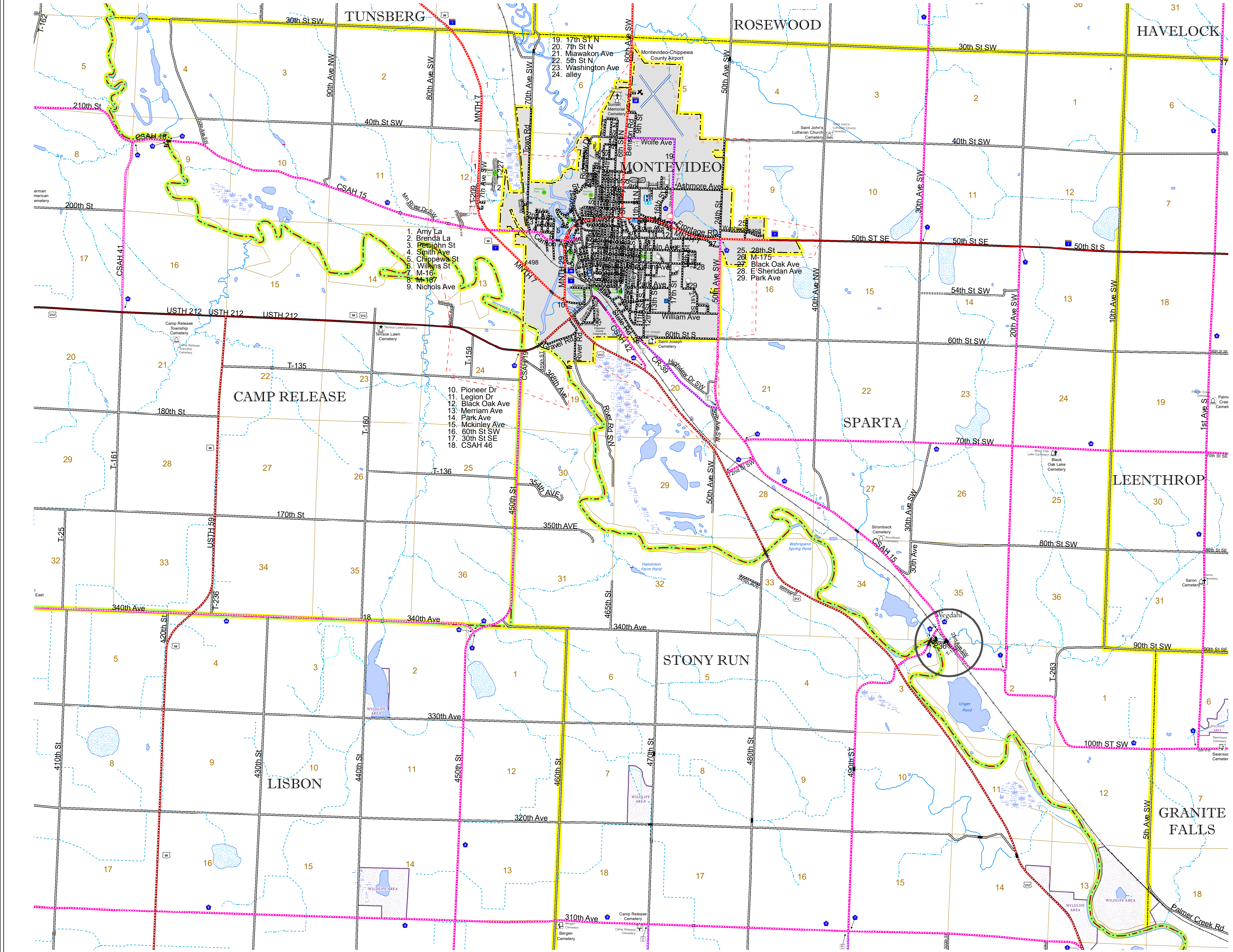


North American Datum  
of 1986

ROAD AND ROADWAY FEATURES		RAILROAD AND RAILWAY FEATURES		AVIATION FEATURES		BOUNDARY FEATURES	
INTERSTATE	CONCRETE	EMPIRE BUILDER STATION (AMTRAK)	COMMERCIAL AIRPORT	TRIBAL LAND	STATE OF MINNESOTA	COUNTY	MUNICIPALITY
US HIGHWAY	BITUMINOUS	NORTHSTAR STATION (COMMUTER)	GENERAL AIRPORT	STATE OF MINNESOTA	COUNTY	MUNICIPALITY	UNORGANIZED TERRITORY
MN HIGHWAY	GRAVEL		AIRSTRIP	LONG BRIDGE (200' OR GREATER SPAN)	STATE OF MINNESOTA	COUNTY	FEDERAL ADJUSTED URBAN AREA (2014)
COUNTY STATE AID HIGHWAY	DIRT/UNIMPROVED		SEAPLANE	MAJOR BRIDGE (20' TO 300' SPAN)	STATE OF MINNESOTA	COUNTY	CIVIL TOWNSHIP
COUNTY ROAD	OTHER		AIRPORT RUNWAY	MINOR BRIDGE (5' TO 20' SPAN)	STATE OF MINNESOTA	COUNTY	CONGRESSIONAL TOWNSHIP
TOWNSHIP ROAD	UNKNOWN			LOCK AND DAM	STATE OF MINNESOTA	COUNTY	SECTION
UNORGANIZED TERRITORY ROAD					STATE OF MINNESOTA	COUNTY	MILITARY
OTHER ROADS					STATE OF MINNESOTA	COUNTY	VOYAGEURS NATIONAL PARK
Municipal	RAMP OR CONNECTOR				STATE OF MINNESOTA	COUNTY	BOUNDARY WATERS CANOE AREA WILDERNESS
Private	INTERSTATE EXIT				STATE OF MINNESOTA	COUNTY	STATE PARK
National Monument	GREAT RIVER ROAD				STATE OF MINNESOTA	COUNTY	REGIONAL PARK
State Forest					STATE OF MINNESOTA	COUNTY	NATIONAL FOREST
State Game					STATE OF MINNESOTA	COUNTY	NATIONAL AND STATE FOREST
State Park					STATE OF MINNESOTA	COUNTY	STATE FOREST
Preserve					STATE OF MINNESOTA	COUNTY	WILDLIFE REFUGUE AREA
					STATE OF MINNESOTA	COUNTY	WILDLIFE MANAGEMENT AREA
					STATE OF MINNESOTA	COUNTY	HYDROLOGIC FEATURES
					STATE OF MINNESOTA	COUNTY	RIVER OR STREAM (PERENNIAL)
					STATE OF MINNESOTA	COUNTY	LAKE, POND OR RESERVOIR
					STATE OF MINNESOTA	COUNTY	STREAM (INTERMITTENT)
					STATE OF MINNESOTA	COUNTY	DRAINAGE DITCH
					STATE OF MINNESOTA	COUNTY	WETLAND
					STATE OF MINNESOTA	COUNTY	ISLAND OR LAND
					STATE OF MINNESOTA	COUNTY	REGIONAL WATERSHED
					STATE OF MINNESOTA	COUNTY	



Population (U.S. Census 2010): 748



To request information from this document in an alternative format, call 651-366-4718 or 1-800-657-3774 (Greater Minnesota); 711 or 1-800-627-3529 (Minnesota Relay). You may also send an e-mail to ADAREquest.dot@state.mn.us. (Please request at least one week in advance.)