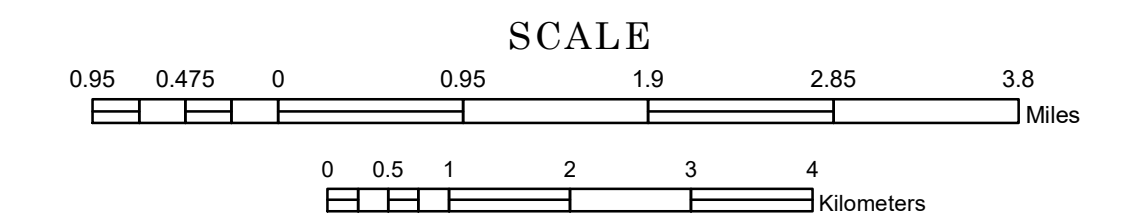


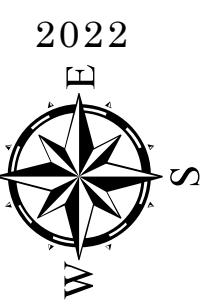
# TOWNSHIP OF TOFTE

PREPARED BY THE  
MINNESOTA DEPARTMENT OF TRANSPORTATION  
OFFICE OF TRANSPORTATION SYSTEM MANAGEMENT

IN COOPERATION WITH  
U.S. DEPARTMENT OF TRANSPORTATION  
FEDERAL HIGHWAY ADMINISTRATION

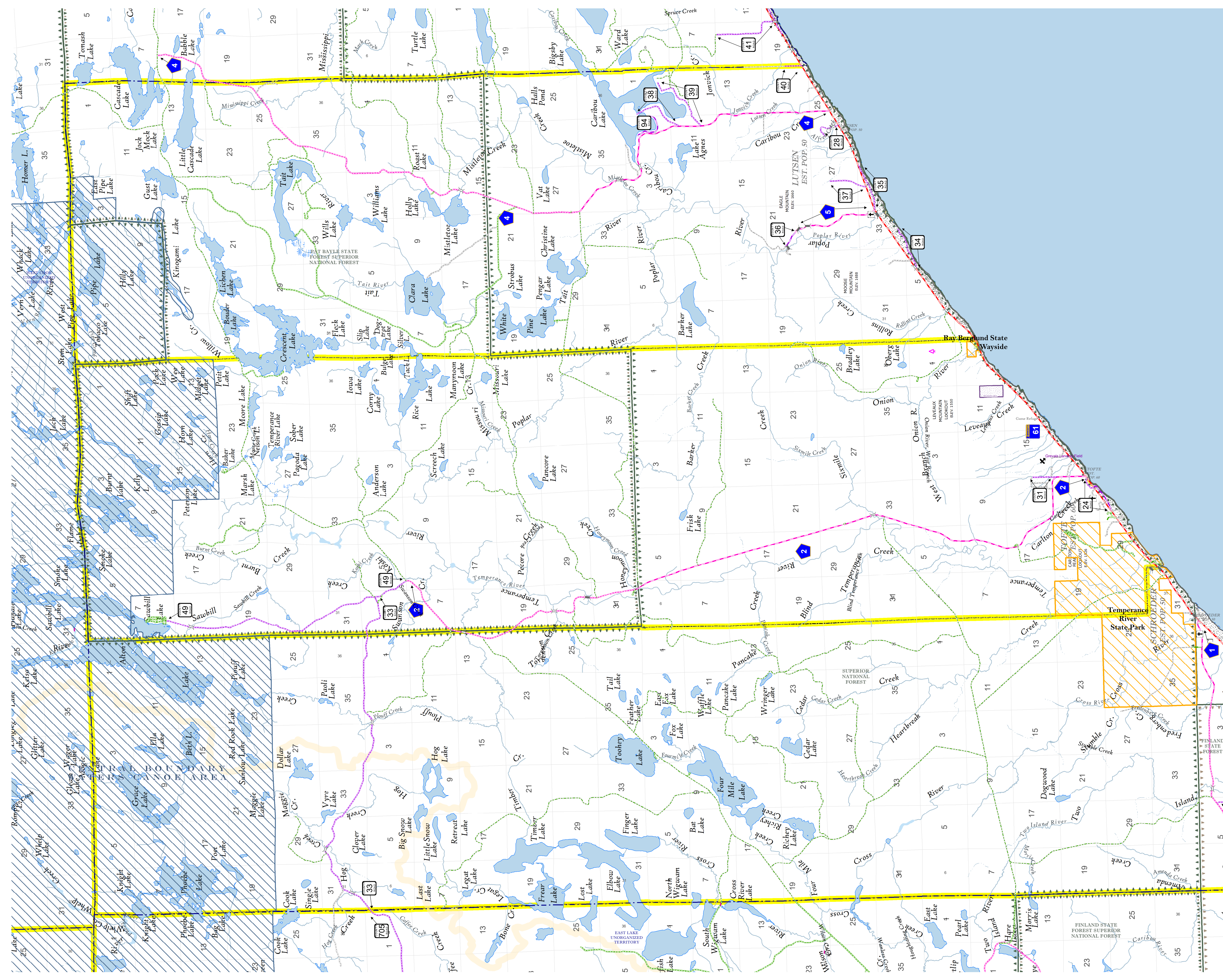


1 in = 5,200 ft

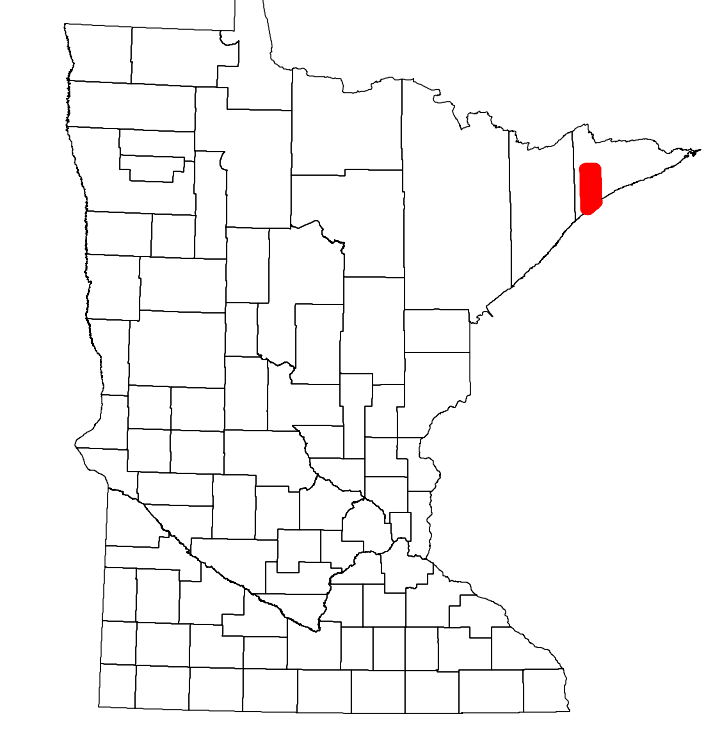


2022  
Projection:  
Transverse Mercator  
NAD 1986  
UTM Zone 15

North American Datum  
of 1986



ROAD AND ROADWAY FEATURES		PUBLIC SERVICE FEATURES	
INTERSTATE	[Symbol]	MNDOT OFFICE	[Symbol]
UNITED STATES HIGHWAY	[Symbol]	MNDOT TRUCK STATION	[Symbol]
MINNESOTA TRUNK HIGHWAY	[Symbol]	HIGHWAY PATROL DISTRICT OFFICE	[Symbol]
COUNTY STATE AID HIGHWAY	[Symbol]	STATE TRAVEL INFORMATION CENTER	[Symbol]
COUNTY ROAD	[Symbol]	REST AREA (Full Service)	[Symbol]
MUNICIPAL STATE AID STREET	[Symbol]	REST AREA (Fast Turn)	[Symbol]
MUNICIPAL STREET	[Symbol]	WAYSIDE (Walk or Pr Trail)	[Symbol]
PRIVATE STREET/ROAD	[Symbol]	PUBLIC ACCESS POINT	[Symbol]
TOWNSHIP ROAD	[Symbol]	FARMSHOULDS	[Symbol]
UNORGANIZED TERRITORY ROAD	[Symbol]	PORT OF ENTRY	[Symbol]
INDIAN SERVICE ROAD	[Symbol]	PARK AND RIDE LOT	[Symbol]
RAMP OR CONNECTOR	[Symbol]	PUBLIC UNIVERSITY OR COLLEGE	[Symbol]
INTERSTATE EXIT	[Symbol]	TOWN HALL	[Symbol]
GREAT RIVER ROAD	[Symbol]	ARMORY	[Symbol]
OTHER ROADS	[Symbol]	CULTURAL FEATURES	[Symbol]
Native Path	[Symbol]	STATE HISTORICAL MARKER	[Symbol]
Arroyo	[Symbol]	HISTORIC DISTRICT	[Symbol]
Other Road	[Symbol]	HISTORIC SITE	[Symbol]
CONCRETE	[Symbol]	MONUMENT	[Symbol]
BITUMINOUS	[Symbol]	BOUNDARY FEATURES	[Symbol]
GRAVEL	[Symbol]	TRIBAL LAND	[Symbol]
DIRT/UNIMPROVED	[Symbol]	COUNTY	[Symbol]
OTHER	[Symbol]	MUNICIPALITY	[Symbol]
UNKNOWN	[Symbol]	ADJACENT MUNICIPALITY	[Symbol]
AVIATION FEATURES	[Symbol]	FEDERAL ADJUSTED URBAN AREA (2014)	[Symbol]
COMMERCIAL AIRPORT	[Symbol]	MILITARY	[Symbol]
GENERAL AIRPORT	[Symbol]	VOYAGEUR'S NATIONAL PARK	[Symbol]
ARSTRIP	[Symbol]	BOUNDARY WATERS CANOE AREA WILDERNESS	[Symbol]
SEAPLANE	[Symbol]	STATE PARK	[Symbol]
AIRPORT RUNWAY	[Symbol]	REGIONAL PARK	[Symbol]
RAILROAD AND RAILWAY FEATURES	[Symbol]	NATIONAL FOREST	[Symbol]
RAILWAY	[Symbol]	NATIONAL AND STATE FOREST	[Symbol]
PASSENGER TRAIN STATION	[Symbol]	STATE FOREST	[Symbol]
LIGHT RAIL	[Symbol]	NATIONAL TRAIL	[Symbol]
LIGHT RAIL STATION	[Symbol]	WILDLIFE REFUGUE AREA	[Symbol]
INFRASTRUCTURE FEATURES	[Symbol]	WILDLIFE MANAGEMENT AREA	[Symbol]
LONG BRIDGE (600' or Greater Spans)	[Symbol]	HYDROLOGIC FEATURES	[Symbol]
MAJOR BRIDGE (20' to 300' Spans)	[Symbol]	LAKE, POND OR RESERVOIR	[Symbol]
MINOR BRIDGE (5' to 20' Spans)	[Symbol]	STREAM (Intermittent)	[Symbol]
DAM	[Symbol]	DRAINAGE DITCH	[Symbol]
LOCK AND DAM	[Symbol]	WETLAND	[Symbol]
CITY CENTERS	[Symbol]	ISLAND OR LAND	[Symbol]
TRIBAL GOVERNMENT CENTER	[Symbol]	REGIONAL WATERSHED	[Symbol]
CITY CENTER	[Symbol]		
LOCALLY KNOWN PLACE	[Symbol]		
UNINCORPORATED COMMUNITY	[Symbol]		



Population (U.S. Census 2010): 249

To request information from this document in an alternative format, call 651-366-4718 or 1-800-657-3774 (Greater Minnesota); 711 or 1-800-627-3529 (Minnesota Relay). You may also send an e-mail to ADAREquest.dot@state.mn.us. (Please request at least one week in advance.)