

# TOWNSHIP OF ROSE HILL

PREPARED BY THE  
MINNESOTA DEPARTMENT OF TRANSPORTATION  
OFFICE OF TRANSPORTATION SYSTEM MANAGEMENT

IN COOPERATION WITH  
U.S. DEPARTMENT OF TRANSPORTATION  
FEDERAL HIGHWAY ADMINISTRATION



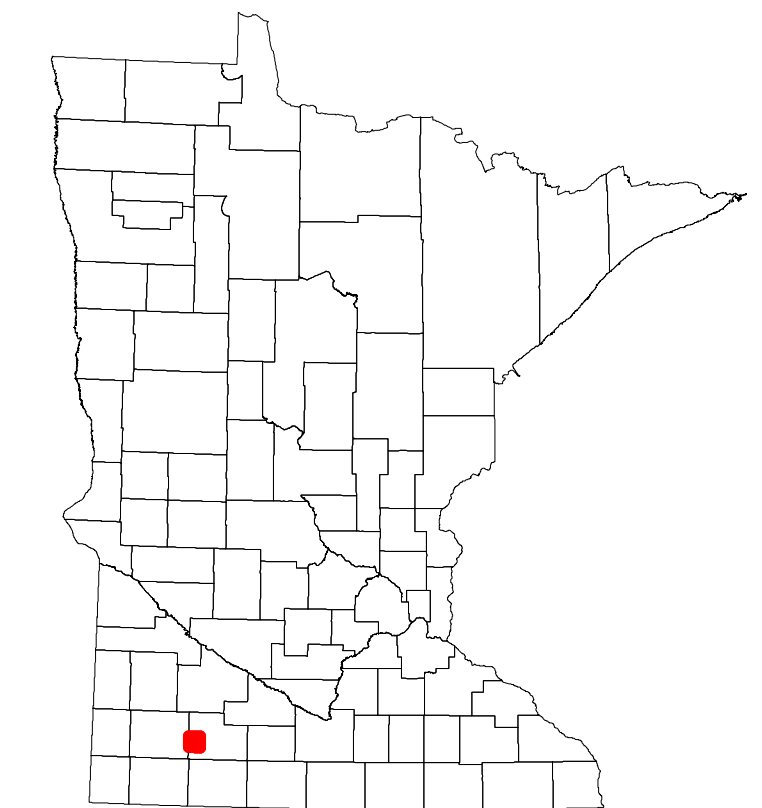
2023

Projection:  
Transverse Mercator  
NAD 1986  
UTM Zone 15

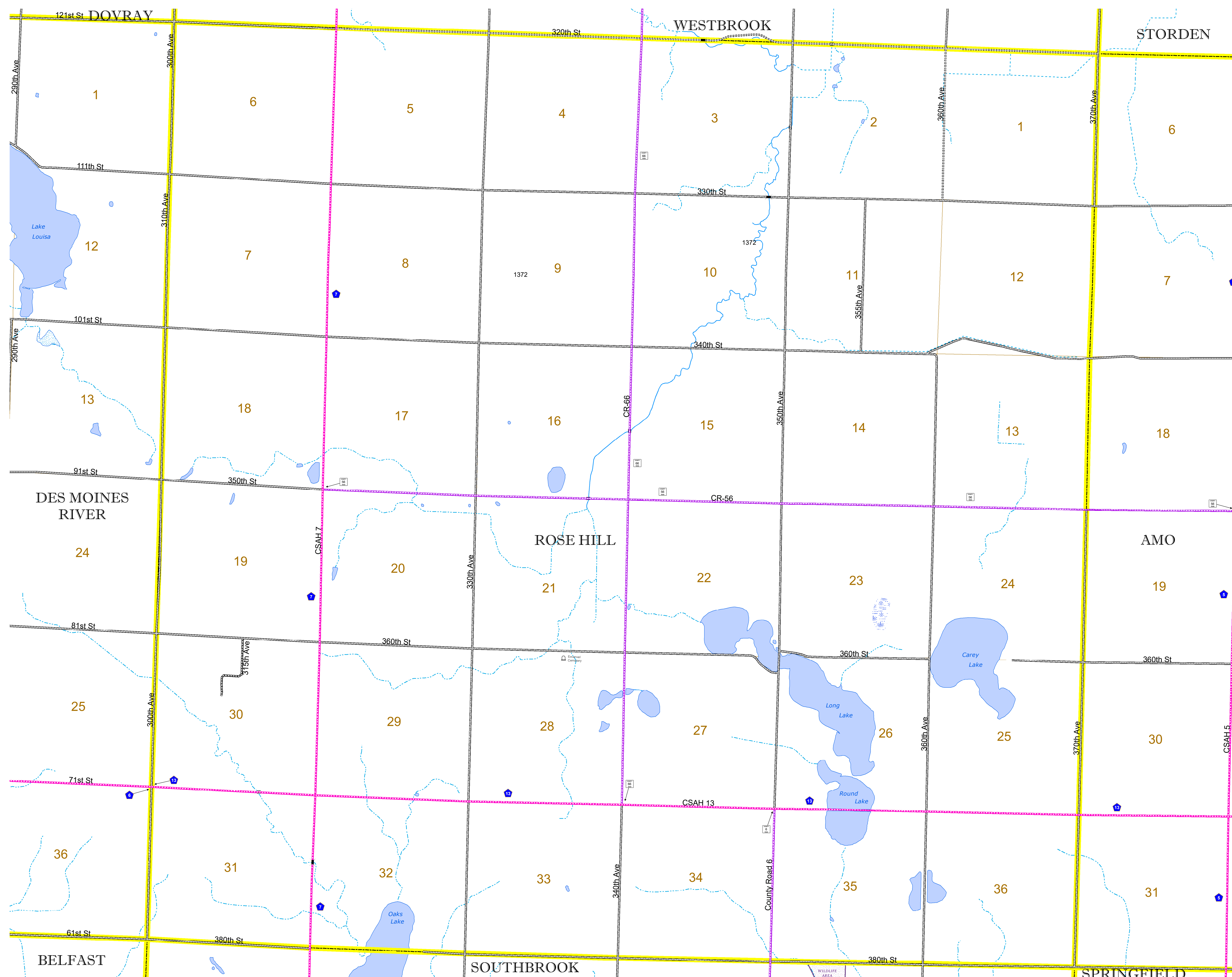


North American Datum  
of 1986

ROAD AND ROADWAY FEATURES		AVIATION FEATURES	
INTERSTATE	CONCRETE	COMMERCIAL AIRPORT	GENERAL AIRPORT
US HIGHWAY	BITUMINOUS	AIRSTRIP	SEAPLANE
MN HIGHWAY	GRAVEL	AIRPORT RUNWAY	AIRPORT RUNWAY
COUNTY STATE AID HIGHWAY	DIRT/UNIMPROVED		
COUNTY ROAD	OTHER		
TOWNSHIP ROAD	UNKNOWN		
UNORGANIZED TERRITORY ROAD			
OTHER ROADS			
Municipal	RAMP OR CONNECTOR		
Private	INTERSTATE EXT.		
National Monument	GREAT RIVER ROAD		
National Park			
National Wildlife			
State Game			
Military			
RAILROAD AND RAILWAY FEATURES		BOUNDARY FEATURES	
EMPIRE BUILDER STATION (AMTRAK)	TRIBAL LAND	STATE OF MINNESOTA	COUNTY
NORTHSTAR STATION (COMMUTER)	STATE OF MINNESOTA	MUNICIPALITY	UNORGANIZED TERRITORY
LIGHT RAIL	STATE OF MINNESOTA	FEDERAL ADJUSTED URBAN AREA (2014)	CIVIL TOWNSHIP
BLUE LINE	STATE OF MINNESOTA	CONGRESSIONAL TOWNSHIP	SECTION
GREEN LINE	STATE OF MINNESOTA	MILITARY	VOYAGEURS NATIONAL PARK
			BOUNDARY WATERS CANOE AREA WILDERNESS
			STATE PARK
			REGIONAL PARK
			NATIONAL FOREST
			NATIONAL AND STATE FOREST
			STATE FOREST
			WILDLIFE REFUGUE AREA
			WILDLIFE MANAGEMENT AREA
			HYDROLOGIC FEATURES
			RIVER OR STREAM (PERMANENT)
			LAKE, POND OR RESERVOIR
			STREAM (INTERMITTENT)
			DRAINAGE DITCH
			WETLAND
			ISLAND OR LAND
			REGIONAL WATERSHED



Population (U.S. Census 2010): 166



To request information from this document in an alternative format, call 651-366-4718 or 1-800-657-3774 (Greater Minnesota); 711 or 1-800-627-3529 (Minnesota Relay). You may also send an e-mail to ADarequest.dot@state.mn.us. (Please request at least one week in advance.)