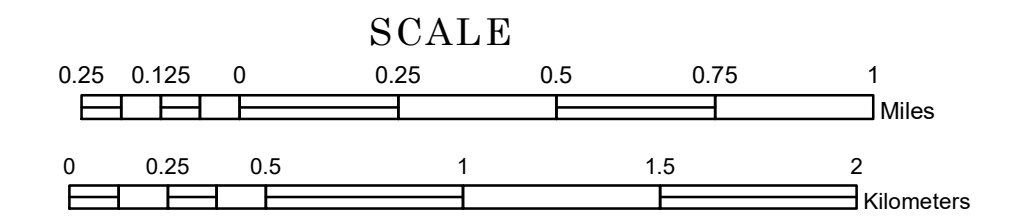


TOWNSHIP OF BRANDON

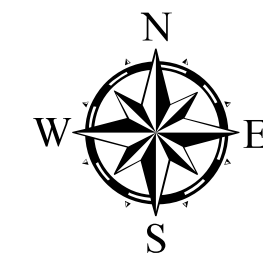
PREPARED BY THE
MINNESOTA DEPARTMENT OF TRANSPORTATION
OFFICE OF TRANSPORTATION SYSTEM MANAGEMENT

IN COOPERATION WITH
U.S. DEPARTMENT OF TRANSPORTATION
FEDERAL HIGHWAY ADMINISTRATION



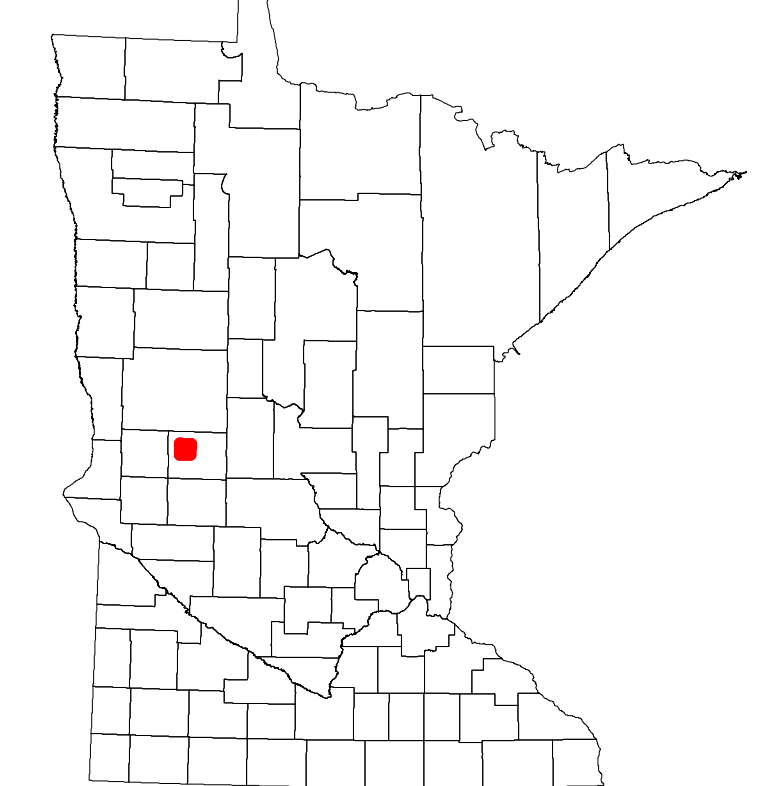
1 in = 1,600 ft
2022

Projection:
Transverse Mercator
NAD 1986
UTM Zone 15

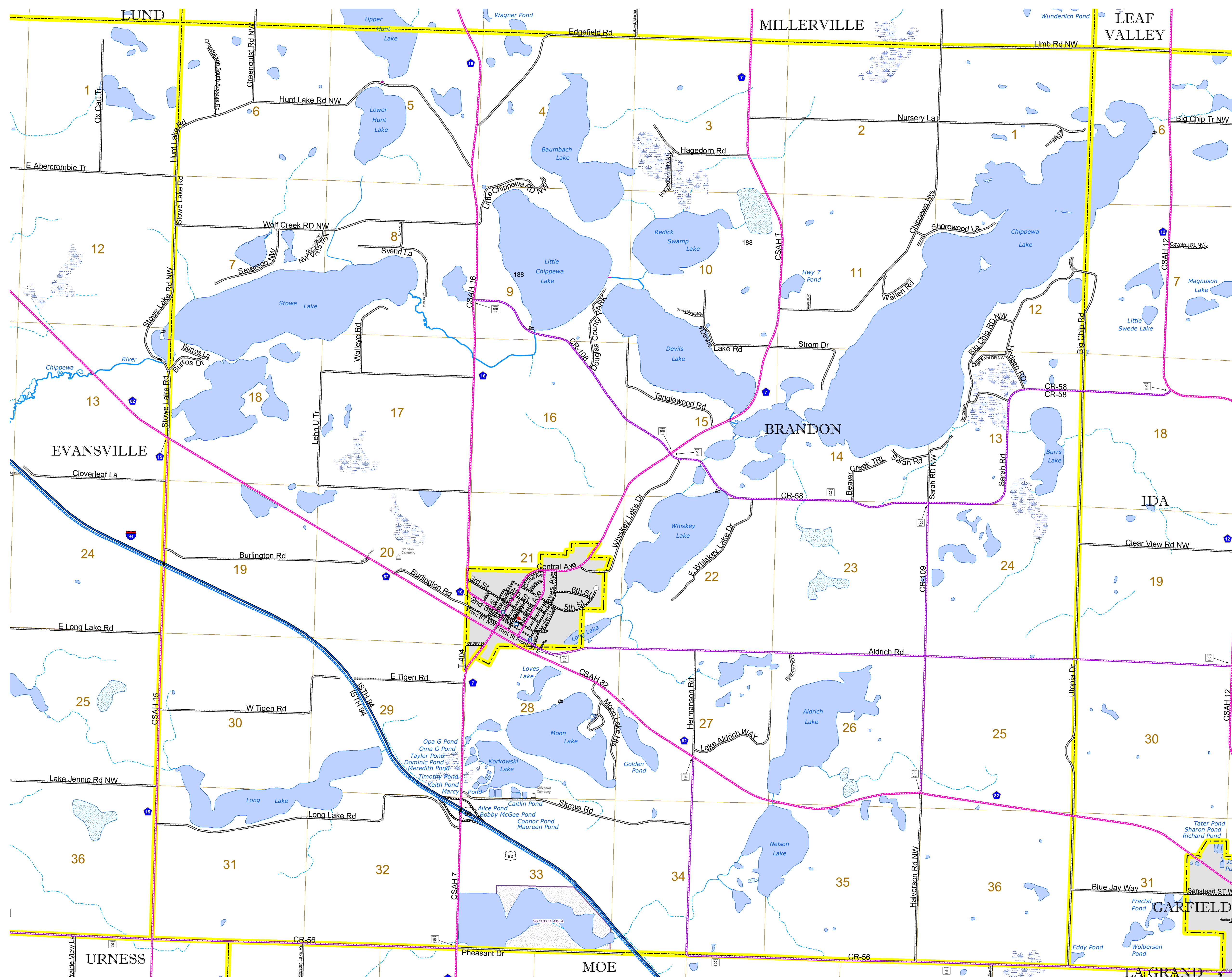


North American Datum
of 1986

ROAD AND ROADWAY FEATURES		BOUNDARY FEATURES	
INTERSTATE		TRIBAL LAND	
US HIGHWAY		STATE OF MINNESOTA	
MN HIGHWAY		COUNTY	
COUNTY STATE AID HIGHWAY		MUNICIPALITY	
COUNTY ROAD		UNORGANIZED TERRITORY	
TOWNSHIP ROAD		FEDERAL ADJUSTED URBAN AREA (2014)	
UNORGANIZED TERRITORY ROAD		CIVIL TOWNSHIP	
OTHER ROADS		CONGRESSIONAL TOWNSHIP	
MUNICIPAL		SECTION	
PRIVATE		MILITARY	
NATIONAL MONUMENT		VOYAGEURS NATIONAL PARK	
NATIONAL WILDLIFE REFUGE		BOUNDARY WATERS CANOE AREA WILDERNESS	
NATIONAL FOREST		STATE PARK	
STATE PARK		REGIONAL PARK	
NATIONAL WILDLIFE REFUGE		NATIONAL FOREST	
STATE PARK		NATIONAL AND STATE FOREST	
STATE FOREST		NATIONAL TRAIL	
WILDLIFE REFUGE AREA		WILDLIFE REFUGE AREA	
WILDLIFE MANAGEMENT AREA		HYDROLOGIC FEATURES	
HYDROLOGIC FEATURES		RIVER OR STREAM (PERMANENT)	
RIVER OR STREAM (PERMANENT)		LAKE, POND OR RESERVOIR	
LAKE, POND OR RESERVOIR		STREAM (INTERMITTENT)	
STREAM (INTERMITTENT)		DRAINAGE DITCH	
DRAINAGE DITCH		WETLAND	
WETLAND		ISLAND OR LAND	
ISLAND OR LAND		REGIONAL WATERSHED	
REGIONAL WATERSHED			



Population (U.S. Census 2010): 713



To request information from this document in an alternative format, call 651-366-4718 or 1-800-657-3774 (Greater Minnesota); 711 or 1-800-627-3529 (Minnesota Relay). You may also send an e-mail to ADArequest.dot@state.mn.us. (Please request at least one week in advance.)