

# TOWNSHIP OF BRUSH CREEK

PREPARED BY THE  
MINNESOTA DEPARTMENT OF TRANSPORTATION  
OFFICE OF TRANSPORTATION SYSTEM MANAGEMENT

IN COOPERATION WITH  
U.S. DEPARTMENT OF TRANSPORTATION  
FEDERAL HIGHWAY ADMINISTRATION



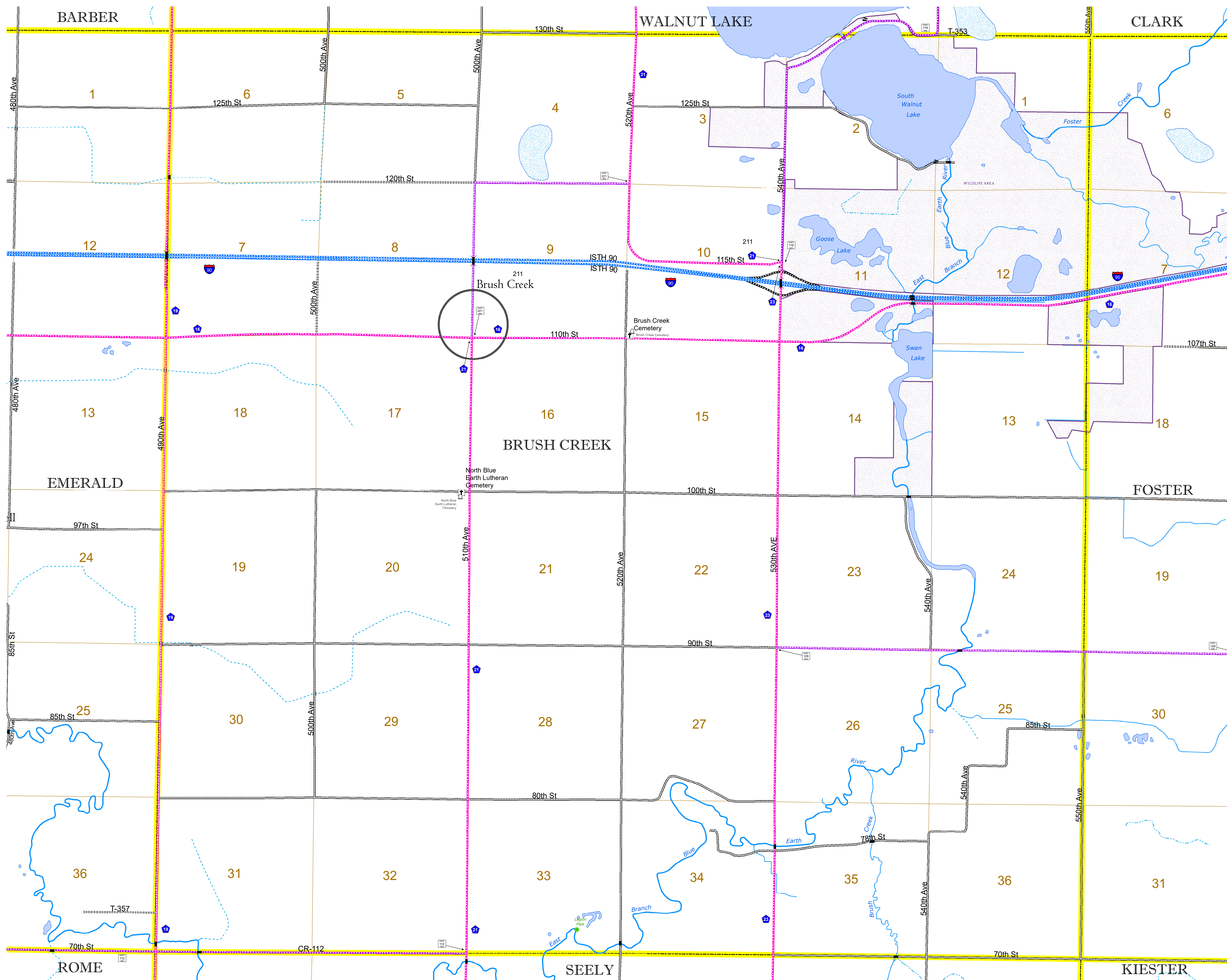
1 in = 1,600 ft

2022

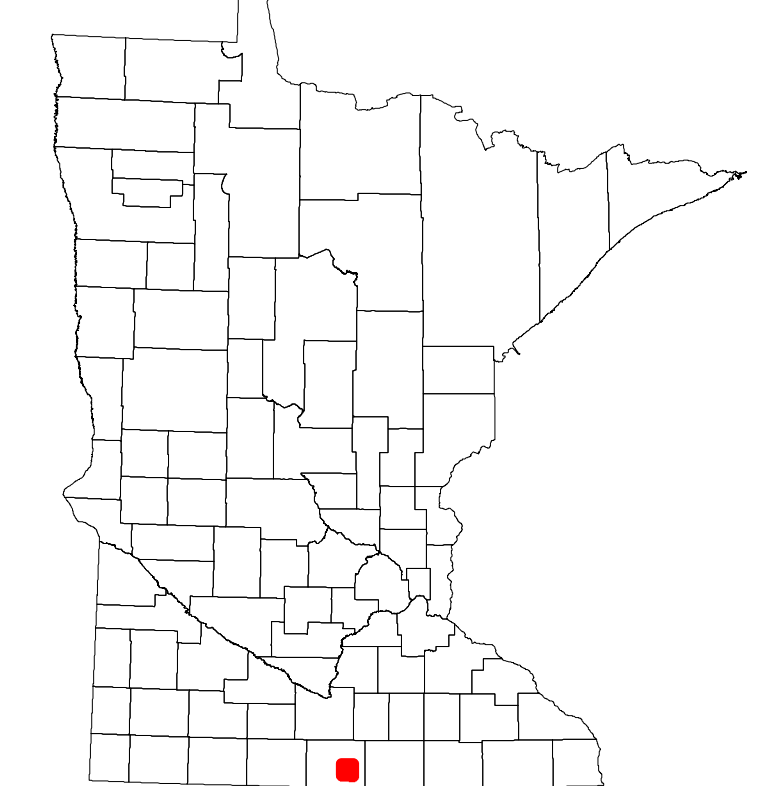
Projection:  
Transverse Mercator  
NAD 1986  
UTM Zone 15



North American Datum  
of 1986



ROAD AND ROADWAY FEATURES		AVIATION FEATURES	
INTERSTATE	CONCRETE	COMMERCIAL AIRPORT	GENERAL AIRPORT
US HIGHWAY	BITUMINOUS	AIRSTRIP	SEAPLANE
MN HIGHWAY	GRAVEL	AIRPORT RUNWAY	RAILWAY
COUNTY STATE AID HIGHWAY	DIRT/UNIMPROVED	OTHER ROADS	EMPIRE BUILDER STATION (AMTRAK)
COUNTY ROAD	OTHER	Municipal	NORTHSTAR STATION (COMMUTER)
TOWNSHIP ROAD	UNKNOWN	National Service	LIGHT RAIL
UNORGANIZED TERRITORY ROAD		Multisub	BLUE LINE
			GREEN LINE
			INFRASTRUCTURE FEATURES
			LONG BRIDGE (200' OR GREATER SPAN)
			MAJOR BRIDGE (20' TO 200' SPAN)
			MINOR BRIDGE (5' TO 20' SPAN)
			DAM
			LOCK AND DAM
			CITY CENTERS
			STATE CAPITAL
			COUNTY SEAT
			CITY CENTER
			UNINCORPORATED COMMUNITY
			PUBLIC SERVICE FEATURES
			MNDOT OFFICE
			MNDOT TRUCK STATION
			HIGHWAY PATROL DISTRICT OFFICE
			STATE TRAVEL INFORMATION CENTER
			REST AREA (FULL SERVICE)
			REST AREA (VAULT TOILET)
			WAYSIDE (VAULT OR PIT TOILET)
			PARK AND RIDE LOT
			PORT OF ENTRY
			PUBLIC ACCESS POINT
			MN STATE COLLEGE AND UNIVERSITY SYSTEM (MNSCU)
			UNIVERSITY OF MN SYSTEM
			FAIRGROUNDS
			CULTURAL FEATURES
			STATE HISTORICAL MARKER
			HISTORIC DISTRICT
			HISTORIC SITE
			MONUMENT
			HYDROLOGIC FEATURES
			RIVER OR STREAM (PERENNIAL)
			LAKE, POND OR RESERVOIR
			STREAM (INTERMITTENT)
			DRAINAGE DITCH
			WETLAND
			ISLAND OR LAND
			REGIONAL WATERSHED



Population (U.S. Census 2010): 225

To request information from this document in an alternative format, call 651-366-4718 or 1-800-657-3774 (Greater Minnesota); 711 or 1-800-627-3529 (Minnesota Relay). You may also send an e-mail to ADRequest.dot@state.mn.us. (Please request at least one week in advance.)