

TOWNSHIP OF LIEN

PREPARED BY THE
MINNESOTA DEPARTMENT OF TRANSPORTATION
OFFICE OF TRANSPORTATION SYSTEM MANAGEMENT

IN COOPERATION WITH
U.S. DEPARTMENT OF TRANSPORTATION
FEDERAL HIGHWAY ADMINISTRATION



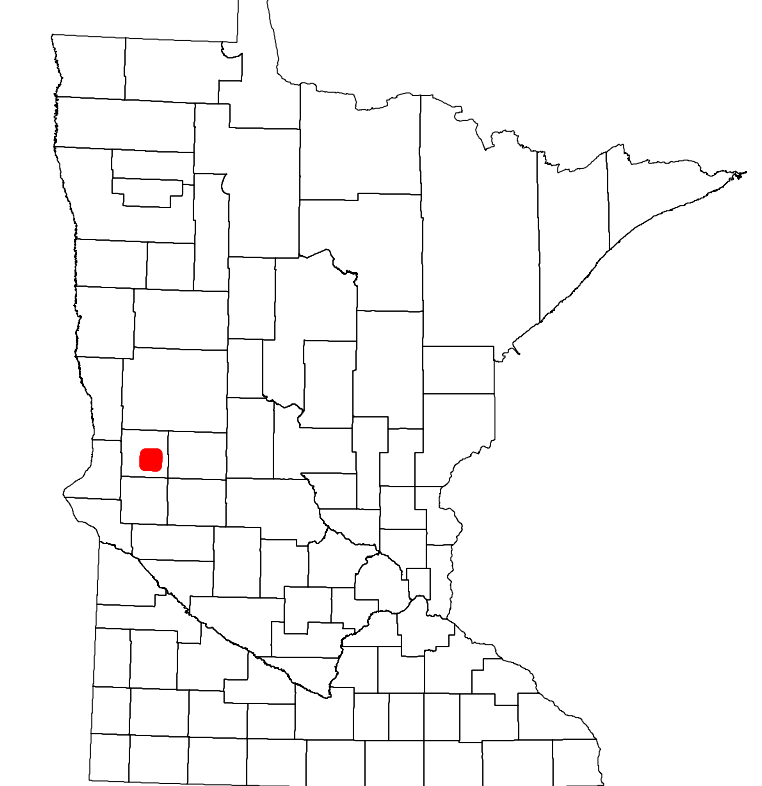
2023

Projection:
Transverse Mercator
NAD 1986
UTM Zone 15

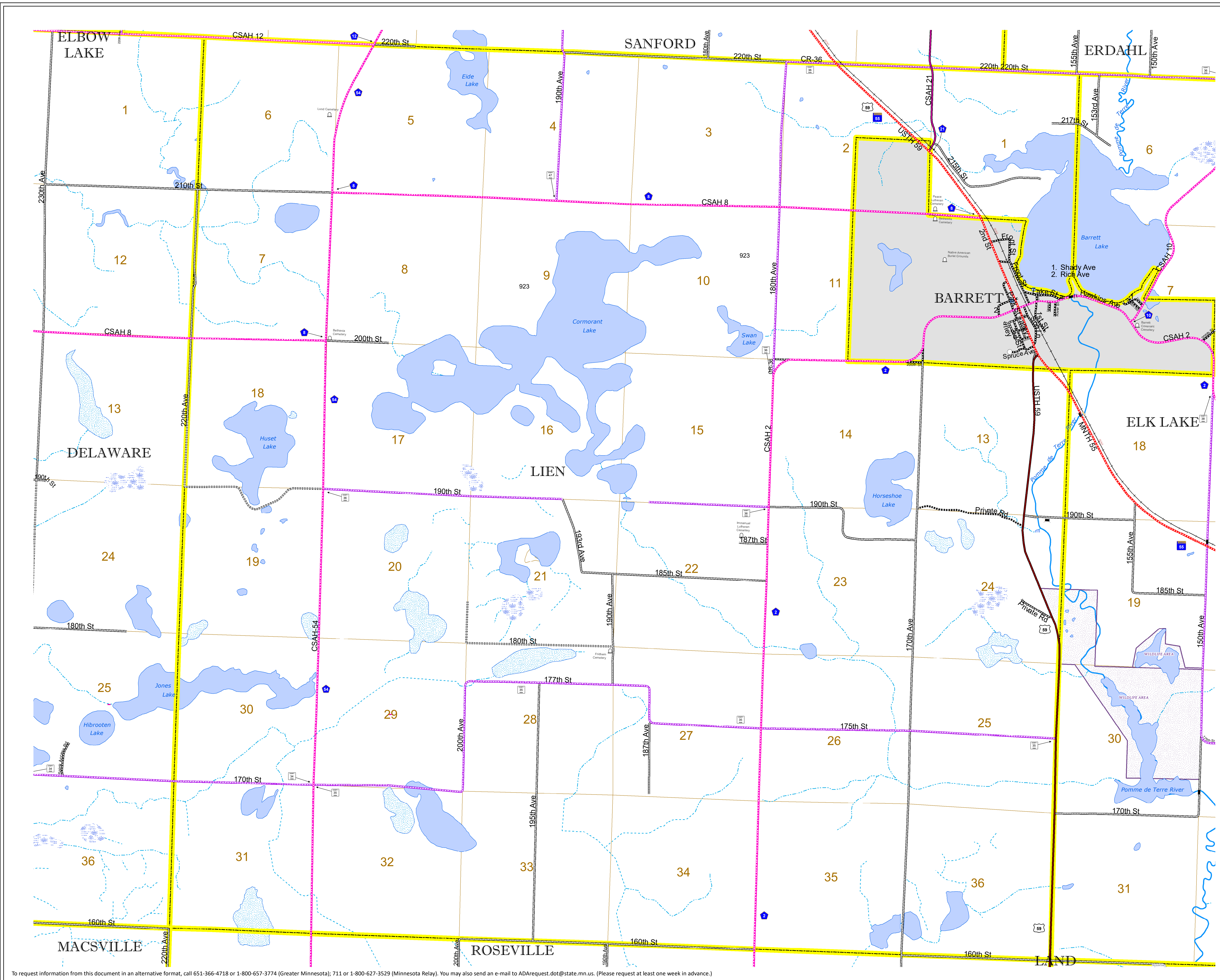


North American Datum
of 1986

ROAD AND ROADWAY FEATURES		BOUNDARY FEATURES	
INTERSTATE		CONCRETE	
US HIGHWAY		BITUMINOUS	
MN HIGHWAY		GRAVEL	
COUNTY STATE AID HIGHWAY		DIRT/UNIMPROVED	
COUNTY ROAD		OTHER	
TOWNSHIP ROAD		UNKNOWN	
UNORGANIZED TERRITORY ROAD		RAMP OR CONNECTOR	
OTHER ROADS		INTERSTATE EXIT	
Municipal		GREAT RIVER ROAD	
Private		RAILROAD AND RAILWAY FEATURES	
National Monument		EMPIRE BUILDER STATION (AMTRAK)	
State Forest		NORTHSTAR STATION (COMPUTER)	
Nature Service		LIGHT RAIL	
National Wildlife		BLUE LINE	
State Park		GREEN LINE	
Preserve		INFRASTRUCTURE FEATURES	
AVIATION FEATURES		LONG BRIDGE (200' OR GREATER SPAN)	
COMMERCIAL AIRPORT		MAJOR BRIDGE (20' TO 200' SPAN)	
GENERAL AIRPORT		MINOR BRIDGE (5' TO 20' SPAN)	
AIRSTRIP		DAM	
SEAPLANE		LOCK-AND-DAM	
AIRPORT RUNWAY		CITY CENTERS	
BOUNDARY FEATURES		STATE CAPITAL	
TRIBAL LAND		COUNTY SEAT	
STATE OF MINNESOTA		CITY CENTER	
COUNTY		UNINCORPORATED COMMUNITY	
MUNICIPALITY		PUBLIC SERVICE FEATURES	
UNORGANIZED TERRITORY		MNDOT OFFICE	
FEDERAL ADJUSTED URBAN AREA (2014)		MNDOT TRUCK STATION	
CIVIL TOWNSHIP		HIGHWAY PATROL DISTRICT OFFICE	
CONGRESSIONAL TOWNSHIP		STATE TRAVEL INFORMATION CENTER	
SECTION		REST AREA (FULL SERVICE)	
MILITARY		REST AREA (VAULT TOILET)	
VOYAGEURS NATIONAL PARK		WAYSIDE (VAULT OR PVI TOILET)	
BOUNDARY WATERS CANOE AREA WILDERNESS		PARK AND RIDE LOT	
STATE PARK		PORT OF ENTRY	
REGIONAL PARK		PUBLIC ACCESS POINT	
NATIONAL FOREST		MN STATE COLLEGE AND UNIVERSITY SYSTEM (MNSCU)	
NATIONAL AND STATE FOREST		UNIVERSITY OF MN SYSTEM	
STATE FOREST		FAIRGROUNDS	
NATIONAL TRAIL		CULTURAL FEATURES	
WILDLIFE REFUGE AREA		STATE HISTORICAL MARKER	
WILDLIFE MANAGEMENT AREA		HISTORIC DISTRICT	
HYDROLOGIC FEATURES		HISTORIC SITE	
RIVER OR STREAM (PERENNIAL)		MONUMENT	
LAKE, POND OR RESERVOIR			
STREAM (INTERMITTENT)			
DRAINAGE DITCH			
WETLAND			
ISLAND OR LAND			
REGIONAL WATERSHED			



Population (U.S. Census 2010): 111



To request information from this document in an alternative format, call 651-366-4718 or 1-800-657-3774 (Greater Minnesota); 711 or 1-800-627-3529 (Minnesota Relay). You may also send an e-mail to ADAREquest.dot@state.mn.us. (Please request at least one week in advance.)