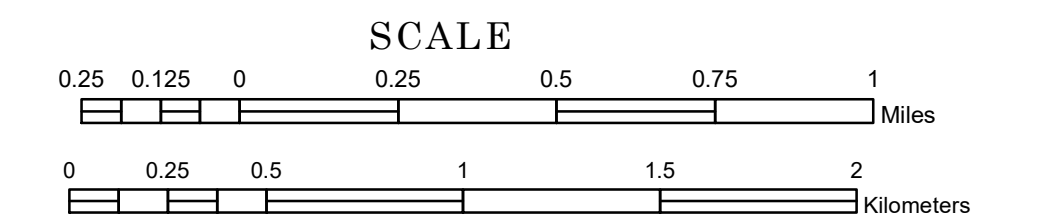


# TOWNSHIP OF BROWNSVILLE

PREPARED BY THE  
MINNESOTA DEPARTMENT OF TRANSPORTATION  
OFFICE OF TRANSPORTATION SYSTEM MANAGEMENT

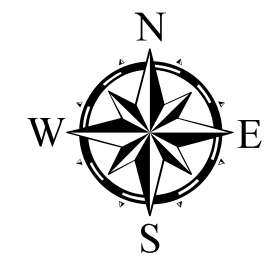
IN COOPERATION WITH  
U.S. DEPARTMENT OF TRANSPORTATION  
FEDERAL HIGHWAY ADMINISTRATION



1 in = 1,600 ft

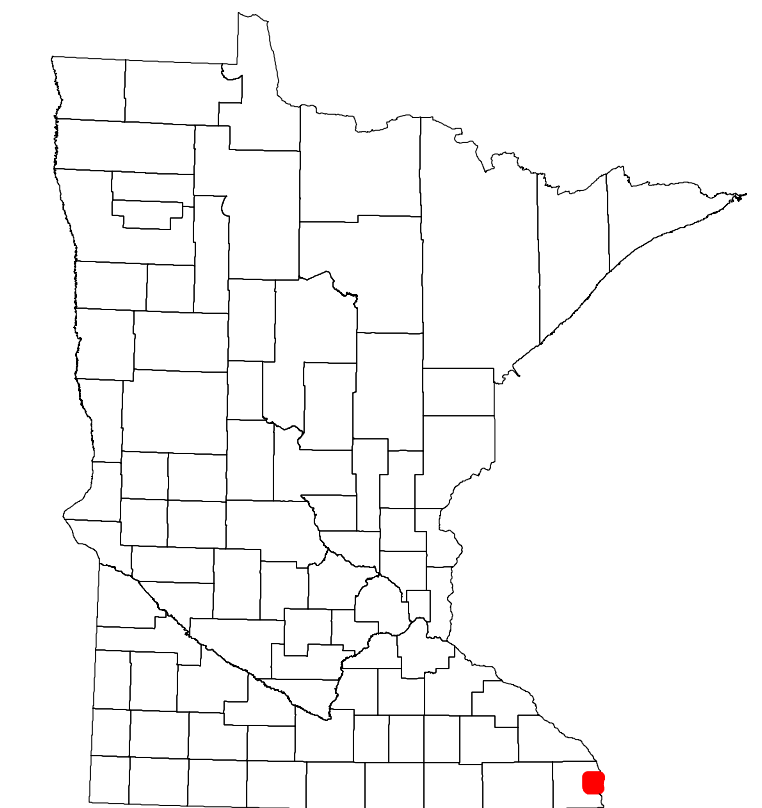
2022

Projection:  
Transverse Mercator  
NAD 1986  
UTM Zone 15

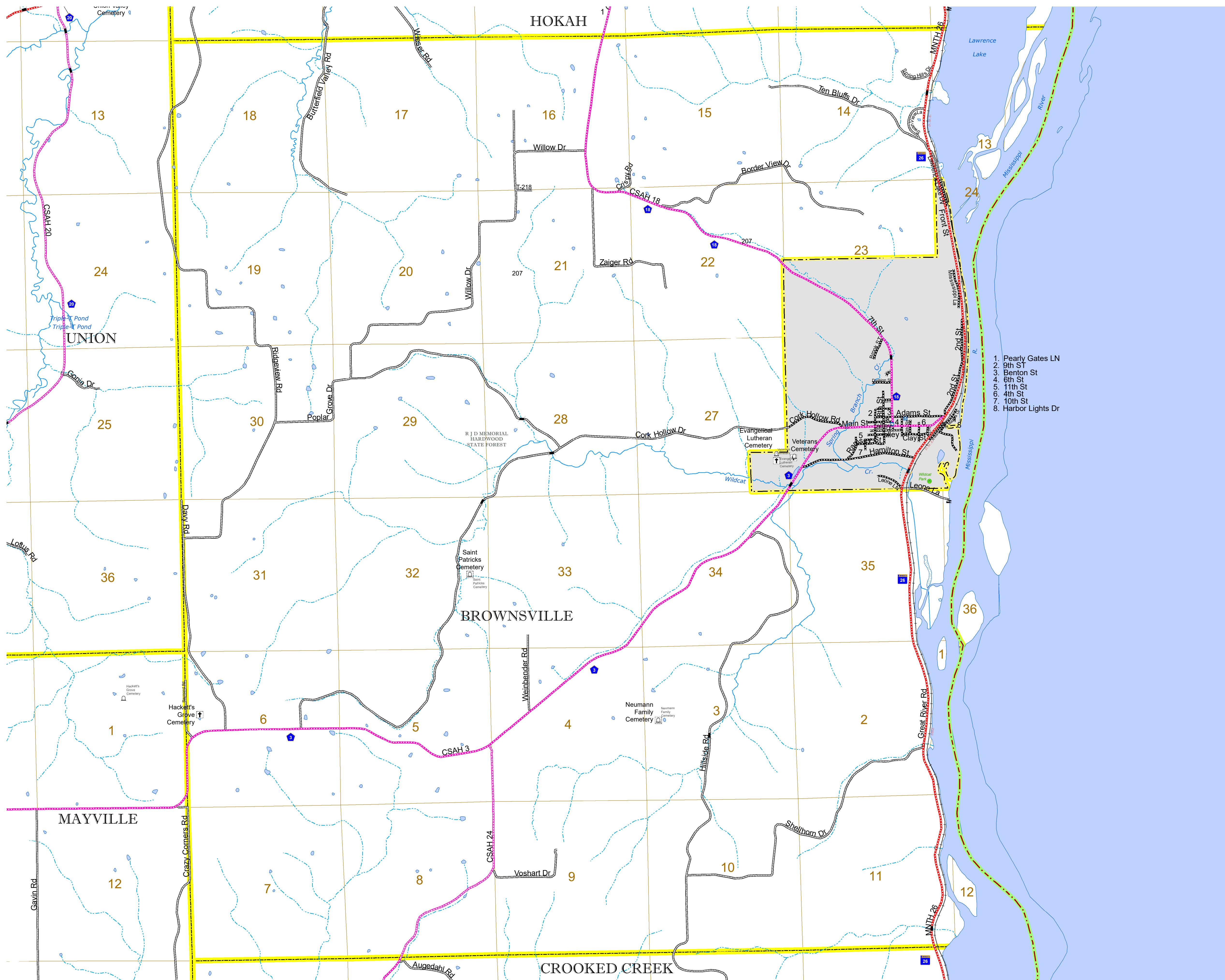


North American Datum  
of 1986

| ROAD AND ROADWAY FEATURES                      |                                       |
|--|---------------------------------------|
| INTERSTATE                                     | CONCRETE                              |
| US HIGHWAY                                     | BITUMINOUS                            |
| MN HIGHWAY                                     | GRAVEL                                |
| COUNTY STATE AID HIGHWAY                       | DIRT/UNIMPROVED                       |
| COUNTY ROAD                                    | OTHER                                 |
| TOWNSHIP ROAD                                  | UNKNOWN                               |
| UNORGANIZED TERRITORY ROAD                     |                                       |
| OTHER ROADS                                    |                                       |
| MUNICIPAL                                      | RAMP OR CONNECTOR                     |
| PRIVATE  | INTERSTATE EXIT                       |
| NATIONAL MONUMENT                              | GREAT RIVER ROAD                      |
| NATIONAL PARK                                  |                                       |
| NATIONAL WILDLIFE REFUGES                      |                                       |
| STATE PARK                                     |                                       |
| RAILROAD AND RAILWAY FEATURES                  |                                       |
| EMPIRE BUILDER STATION (AMTRAK)                | COMMERCIAL AIRPORT                    |
| NORTHSTAR STATION (COMMITTEE)                  | GENERAL AIRPORT                       |
| LIGHT RAIL                                     | AIRSTRIP                              |
| BLUE LINE                                      | SEAPLANE                              |
| GREEN LINE                                     | AIRPORT RUNWAY                        |
| INFRASTRUCTURE FEATURES                        |                                       |
| LONG BRIDGE (200' OR GREATER SPAN)             | TRIAL LAND                            |
| MAJOR BRIDGE (20' TO 200' SPAN)                | STATE OF MINNESOTA                    |
| MINOR BRIDGE (5' TO 20' SPAN)                  | COUNTY                                |
| DAM  | MUNICIPALITY                          |
| LOCK AND DAM                                   | UNORGANIZED TERRITORY                 |
| CITY CENTERS                                   |                                       |
| STATE CAPITAL                                  | FEDERAL ADJUSTED URBAN AREA (2014)    |
| COUNTY SEAT                                    | CIVIL TOWNSHIP                        |
| CITY CENTER                                    | CONGRESSIONAL TOWNSHIP                |
| UNINCORPORATED COMMUNITY                       |                                       |
| PUBLIC SERVICE FEATURES                        |                                       |
| MNDOT OFFICE                                   | MILITARY                              |
| MNDOT TRUCK STATION                            | VOYAGEURS NATIONAL PARK               |
| HIGHWAY PATROL DISTRICT OFFICE                 | BOUNDARY WATERS CANOE AREA WILDERNESS |
| STATE TRAVEL INFORMATION CENTER                | STATE PARK                            |
| REST AREA (FULL SERVICE)                       | REGIONAL PARK                         |
| REST AREA (VAULT TOILET)                       | NATIONAL FOREST                       |
| WAYSIDE (VAULT OR PITY TOILET)                 | NATIONAL AND STATE FOREST             |
| PARK AND RIDE LOT                              | STATE FOREST                          |
| PORT OF ENTRY                                  | NATIONAL TRAIL                        |
| PUBLIC ACCESS POINT                            | WILDLIFE REFUGES AREA                 |
| MN STATE COLLEGE AND UNIVERSITY SYSTEM (MNSCU) | WILDLIFE MANAGEMENT AREA              |
| UNIVERSITY OF MN SYSTEM                        | HYDROLOGIC FEATURES                   |
| FAIRGROUNDS                                    | RIVER OR STREAM (PERENNIAL)           |
| CULTURAL FEATURES                              |                                       |
| STATE HISTORICAL MARKER                        | LAKE, POND OR RESERVOIR               |
| HISTORIC DISTRICT                              | STREAM (INTERMITTENT)                 |
| HISTORIC SITE                                  | DRAINAGE DITCH                        |
| MONUMENT                                       | WETLAND                               |
|  | ISLAND OR LAND                        |
|  | REGIONAL WATERSHED                    |



Population (U.S. Census 2010): 445



1. Pearly Gates LN
2. 8th St
3. Benton St
4. 6th St
5. 11th St
6. 4th St
7. 10th St
8. Harbor Lights Dr

To request information from this document in an alternative format, call 651-366-4718 or 1-800-657-3774 (Greater Minnesota); 711 or 1-800-627-3529 (Minnesota Relay). You may also send an e-mail to ADRequest.dot@state.mn.us. (Please request at least one week in advance.)