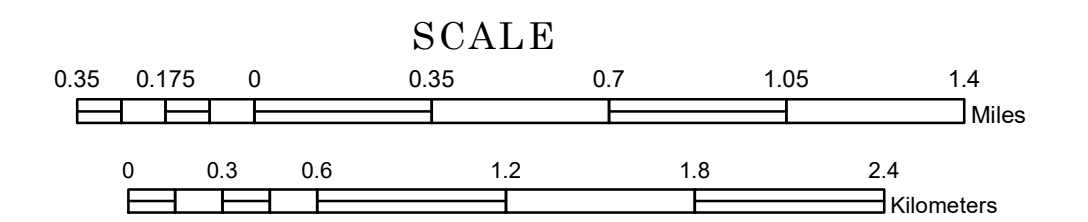


TOWNSHIP OF CROOKED CREEK

PREPARED BY THE
MINNESOTA DEPARTMENT OF TRANSPORTATION
OFFICE OF TRANSPORTATION SYSTEM MANAGEMENT

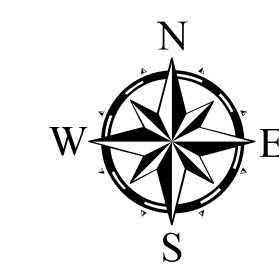
IN COOPERATION WITH
U.S. DEPARTMENT OF TRANSPORTATION
FEDERAL HIGHWAY ADMINISTRATION



1 in = 2,000 ft

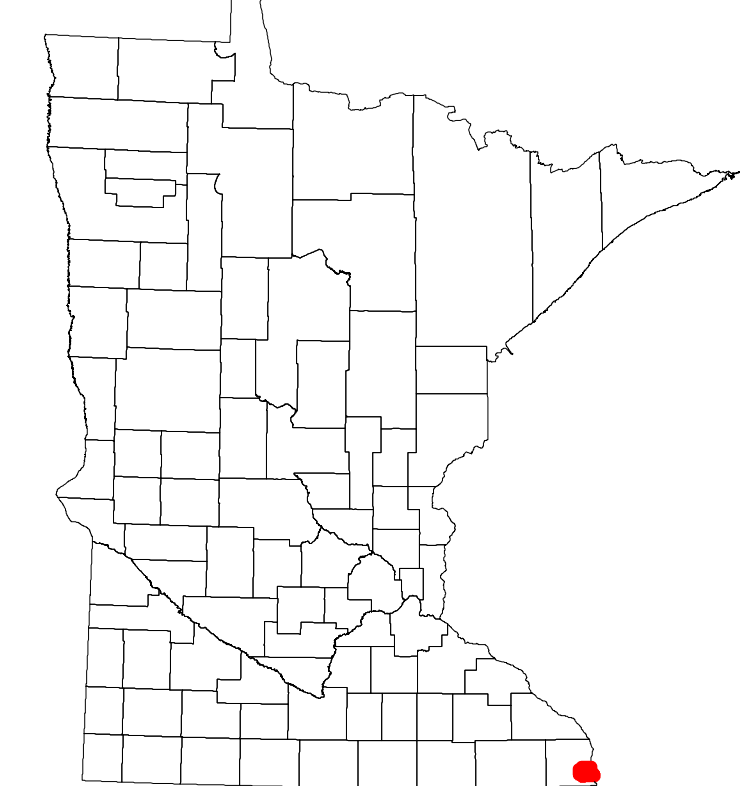
2022

Projection:
Transverse Mercator
NAD 1986
UTM Zone 15

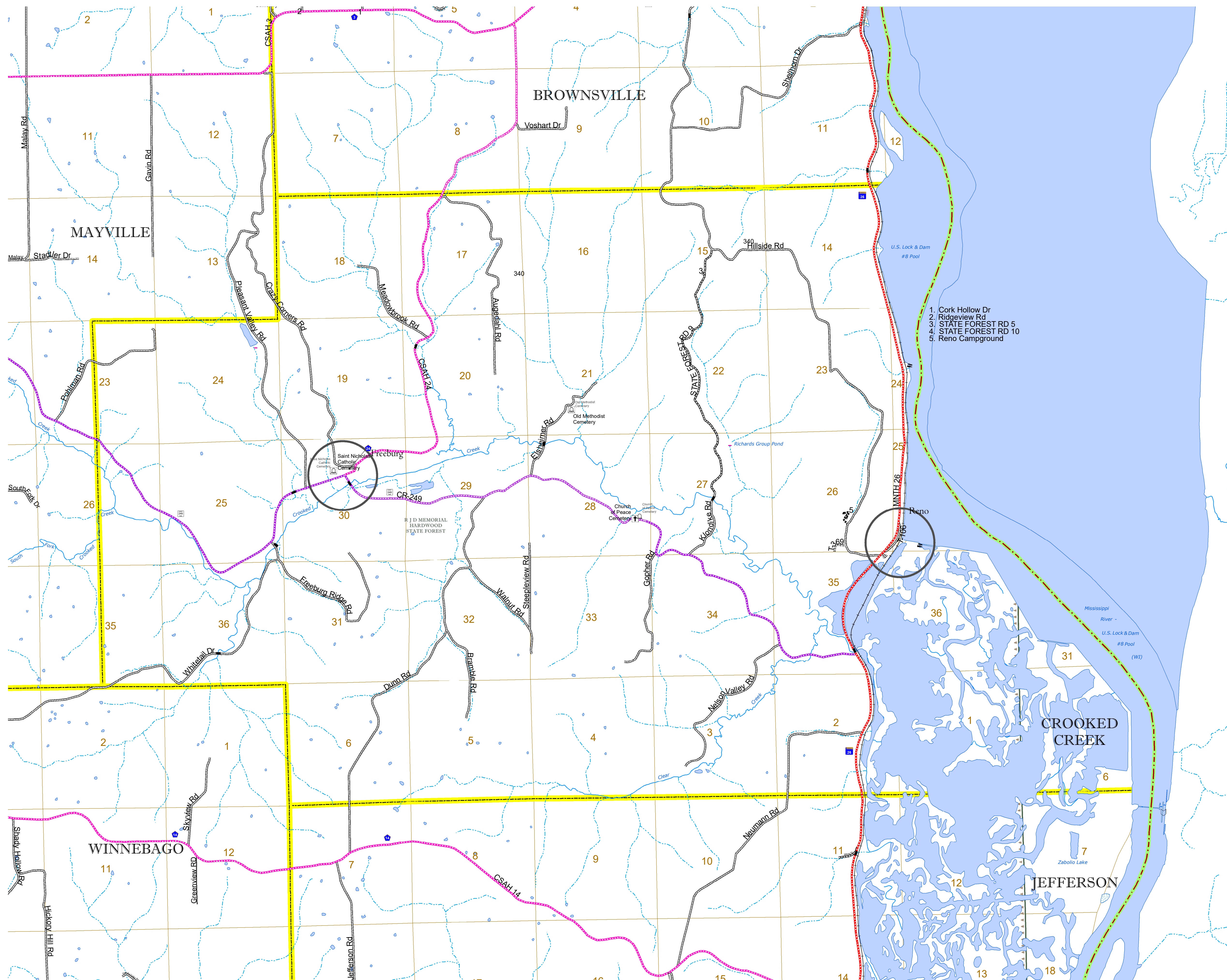


North American Datum
of 1986

ROAD AND ROADWAY FEATURES		RAILROAD AND RAILWAY FEATURES		AVIATION FEATURES		BOUNDARY FEATURES	
INTERSTATE	CONCRETE	EMPIRE BUILDER STATION (AMTRAK)	COMMERCIAL AIRPORT	TRIBAL LAND	STATE OF MINNESOTA	COUNTY	MUNICIPALITY
US HIGHWAY	BITUMINOUS	NORTHSTAR STATION (COMPUTER)	GENERAL AIRPORT	STATE OF MINNESOTA	COUNTY	MUNICIPALITY	UNORGANIZED TERRITORY
MN HIGHWAY	GRAVEL	LIGHT RAIL	AIRSTRIP	STATE OF MINNESOTA	COUNTY	MUNICIPALITY	FEDERAL ADJUSTED URBAN AREA (2014)
COUNTY STATE AID HIGHWAY	DIRT/UNIMPROVED	BLUE LINE	SEAPLANE	STATE OF MINNESOTA	COUNTY	MUNICIPALITY	CIVIL TOWNSHIP
COUNTY ROAD	DIRT/UNIMPROVED	GREEN LINE	AIRPORT RUNWAY	STATE OF MINNESOTA	COUNTY	MUNICIPALITY	CONGRESSIONAL TOWNSHIP
TOWNSHIP ROAD	DIRT/UNIMPROVED	LONG BRIDGE (200' OR GREATER SPAN)	OTHER ROADS	STATE OF MINNESOTA	COUNTY	MUNICIPALITY	SECTION
UNORGANIZED TERRITORY ROAD	DIRT/UNIMPROVED	MAJOR BRIDGE (20' TO 200' SPAN)	MUNICIPAL	STATE OF MINNESOTA	COUNTY	MUNICIPALITY	MILITARY
OTHER ROADS	DIRT/UNIMPROVED	MINOR BRIDGE (5' TO 20' SPAN)	PRIVATE	STATE OF MINNESOTA	COUNTY	MUNICIPALITY	VOYAGEURS NATIONAL PARK
RAMP OR CONNECTOR	DIRT/UNIMPROVED	LOCK AND DAM	NATIONAL MONUMENT	STATE OF MINNESOTA	COUNTY	MUNICIPALITY	BOUNDARY WATERS CANOE AREA WILDERNESS
INTERSTATE EXIT	DIRT/UNIMPROVED	CITY CENTERS	NATIONAL MONUMENT	STATE OF MINNESOTA	COUNTY	MUNICIPALITY	STATE PARK
GREAT RIVER ROAD	DIRT/UNIMPROVED	STATE CAPITAL	NATIONAL MONUMENT	STATE OF MINNESOTA	COUNTY	MUNICIPALITY	REGIONAL PARK
RAILROAD AND RAILWAY FEATURES	DIRT/UNIMPROVED	COUNTY SEAT	NATIONAL MONUMENT	STATE OF MINNESOTA	COUNTY	MUNICIPALITY	NATIONAL FOREST
COMMERCIAL AIRPORT	DIRT/UNIMPROVED	CITY CENTER	NATIONAL MONUMENT	STATE OF MINNESOTA	COUNTY	MUNICIPALITY	NATIONAL AND STATE FOREST
GENERAL AIRPORT	DIRT/UNIMPROVED	UNINCORPORATED COMMUNITY	NATIONAL MONUMENT	STATE OF MINNESOTA	COUNTY	MUNICIPALITY	STATE FOREST
AIRSTRIP	DIRT/UNIMPROVED	PUBLIC SERVICE FEATURES	NATIONAL MONUMENT	STATE OF MINNESOTA	COUNTY	MUNICIPALITY	NATIONAL TRAIL
SEAPLANE	DIRT/UNIMPROVED	MNDOT OFFICE	NATIONAL MONUMENT	STATE OF MINNESOTA	COUNTY	MUNICIPALITY	WILDLIFE REFUGUE AREA
AIRPORT RUNWAY	DIRT/UNIMPROVED	MNDOT TRUCK STATION	NATIONAL MONUMENT	STATE OF MINNESOTA	COUNTY	MUNICIPALITY	WILDLIFE MANAGEMENT AREA
BOUNDARY FEATURES	DIRT/UNIMPROVED	HIGHWAY PATROL DISTRICT OFFICE	NATIONAL MONUMENT	STATE OF MINNESOTA	COUNTY	MUNICIPALITY	HYDROLOGIC FEATURES
TRIBAL LAND	DIRT/UNIMPROVED	STATE TRAVEL INFORMATION CENTER	NATIONAL MONUMENT	STATE OF MINNESOTA	COUNTY	MUNICIPALITY	RIVER OR STREAM (PERMANENT)
STATE OF MINNESOTA	DIRT/UNIMPROVED	REST AREA (FULL SERVICE)	NATIONAL MONUMENT	STATE OF MINNESOTA	COUNTY	MUNICIPALITY	LAKE, POND OR RESERVOIR
COUNTY	DIRT/UNIMPROVED	REST AREA (VAULT TOILET)	NATIONAL MONUMENT	STATE OF MINNESOTA	COUNTY	MUNICIPALITY	STREAM (INTERMITTENT)
MUNICIPALITY	DIRT/UNIMPROVED	WAYSIDE (VAULT OR PIT TOILET)	NATIONAL MONUMENT	STATE OF MINNESOTA	COUNTY	MUNICIPALITY	DRAINAGE DITCH
UNORGANIZED TERRITORY	DIRT/UNIMPROVED	PARK AND RIDE LOT	NATIONAL MONUMENT	STATE OF MINNESOTA	COUNTY	MUNICIPALITY	WETLAND
FEDERAL ADJUSTED URBAN AREA (2014)	DIRT/UNIMPROVED	PORT OF ENTRY	NATIONAL MONUMENT	STATE OF MINNESOTA	COUNTY	MUNICIPALITY	ISLAND OR LAND
CIVIL TOWNSHIP	DIRT/UNIMPROVED	PUBLIC ACCESS POINT	NATIONAL MONUMENT	STATE OF MINNESOTA	COUNTY	MUNICIPALITY	REGIONAL WATERSHED
CONGRESSIONAL TOWNSHIP	DIRT/UNIMPROVED	MN STATE COLLEGE AND UNIVERSITY SYSTEM (MNSCU)	NATIONAL MONUMENT	STATE OF MINNESOTA	COUNTY	MUNICIPALITY	
SECTION	DIRT/UNIMPROVED	UNIVERSITY OF MN SYSTEM	NATIONAL MONUMENT	STATE OF MINNESOTA	COUNTY	MUNICIPALITY	
MILITARY	DIRT/UNIMPROVED	FAIRGROUNDS	NATIONAL MONUMENT	STATE OF MINNESOTA	COUNTY	MUNICIPALITY	
VOYAGEURS NATIONAL PARK	DIRT/UNIMPROVED	CULTURAL FEATURES	NATIONAL MONUMENT	STATE OF MINNESOTA	COUNTY	MUNICIPALITY	
BOUNDARY WATERS CANOE AREA WILDERNESS	DIRT/UNIMPROVED	STATE HISTORICAL MARKER	NATIONAL MONUMENT	STATE OF MINNESOTA	COUNTY	MUNICIPALITY	
STATE PARK	DIRT/UNIMPROVED	HISTORIC DISTRICT	NATIONAL MONUMENT	STATE OF MINNESOTA	COUNTY	MUNICIPALITY	
REGIONAL PARK	DIRT/UNIMPROVED	HISTORIC SITE	NATIONAL MONUMENT	STATE OF MINNESOTA	COUNTY	MUNICIPALITY	
NATIONAL FOREST	DIRT/UNIMPROVED	MONUMENT	NATIONAL MONUMENT	STATE OF MINNESOTA	COUNTY	MUNICIPALITY	
NATIONAL AND STATE FOREST	DIRT/UNIMPROVED		NATIONAL MONUMENT	STATE OF MINNESOTA	COUNTY	MUNICIPALITY	
STATE FOREST	DIRT/UNIMPROVED		NATIONAL MONUMENT	STATE OF MINNESOTA	COUNTY	MUNICIPALITY	
NATIONAL TRAIL	DIRT/UNIMPROVED		NATIONAL MONUMENT	STATE OF MINNESOTA	COUNTY	MUNICIPALITY	
WILDLIFE REFUGUE AREA	DIRT/UNIMPROVED		NATIONAL MONUMENT	STATE OF MINNESOTA	COUNTY	MUNICIPALITY	
WILDLIFE MANAGEMENT AREA	DIRT/UNIMPROVED		NATIONAL MONUMENT	STATE OF MINNESOTA	COUNTY	MUNICIPALITY	
HYDROLOGIC FEATURES	DIRT/UNIMPROVED		NATIONAL MONUMENT	STATE OF MINNESOTA	COUNTY	MUNICIPALITY	
RIVER OR STREAM (PERMANENT)	DIRT/UNIMPROVED		NATIONAL MONUMENT	STATE OF MINNESOTA	COUNTY	MUNICIPALITY	
LAKE, POND OR RESERVOIR	DIRT/UNIMPROVED		NATIONAL MONUMENT	STATE OF MINNESOTA	COUNTY	MUNICIPALITY	
STREAM (INTERMITTENT)	DIRT/UNIMPROVED		NATIONAL MONUMENT	STATE OF MINNESOTA	COUNTY	MUNICIPALITY	
DRAINAGE DITCH	DIRT/UNIMPROVED		NATIONAL MONUMENT	STATE OF MINNESOTA	COUNTY	MUNICIPALITY	
WETLAND	DIRT/UNIMPROVED		NATIONAL MONUMENT	STATE OF MINNESOTA	COUNTY	MUNICIPALITY	
ISLAND OR LAND	DIRT/UNIMPROVED		NATIONAL MONUMENT	STATE OF MINNESOTA	COUNTY	MUNICIPALITY	
REGIONAL WATERSHED	DIRT/UNIMPROVED		NATIONAL MONUMENT	STATE OF MINNESOTA	COUNTY	MUNICIPALITY	



Population (U.S. Census 2010): 285



1. Cork Hollow Dr
2. Ridgeview Rd
3. STATE FOREST RD 5
4. STATE FOREST RD 10
5. Reno Campground

To request information from this document in an alternative format, call 651-366-4718 or 1-800-657-3774 (Greater Minnesota); 711 or 1-800-627-3529 (Minnesota Relay). You may also send an e-mail to ADARquest.dot@state.mn.us. (Please request at least one week in advance.)