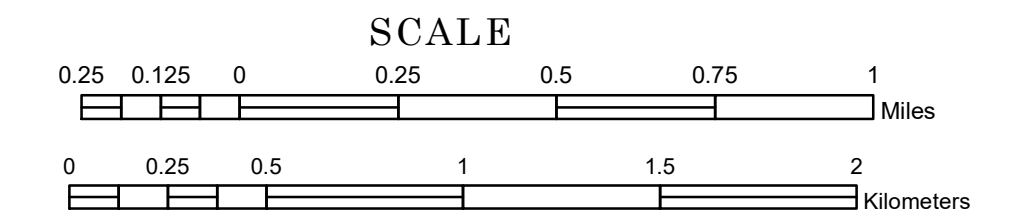


# TOWNSHIP OF CAMBRIDGE

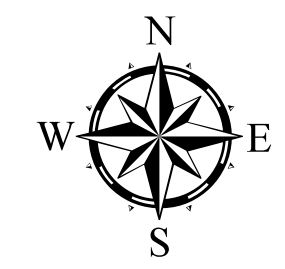
PREPARED BY THE  
MINNESOTA DEPARTMENT OF TRANSPORTATION  
OFFICE OF TRANSPORTATION SYSTEM MANAGEMENT

IN COOPERATION WITH  
U.S. DEPARTMENT OF TRANSPORTATION  
FEDERAL HIGHWAY ADMINISTRATION



1 in = 1,600 ft

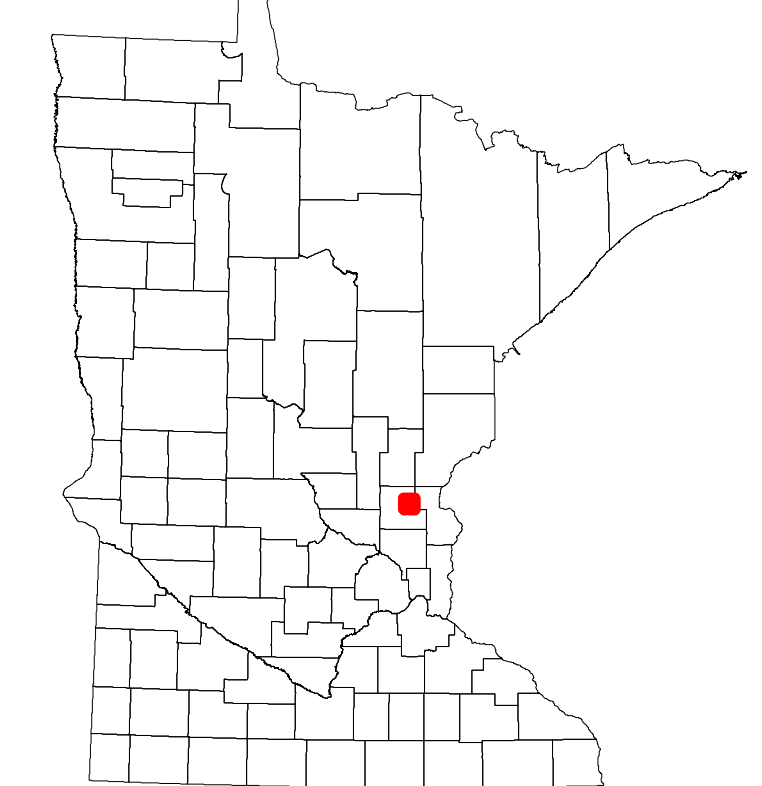
2023



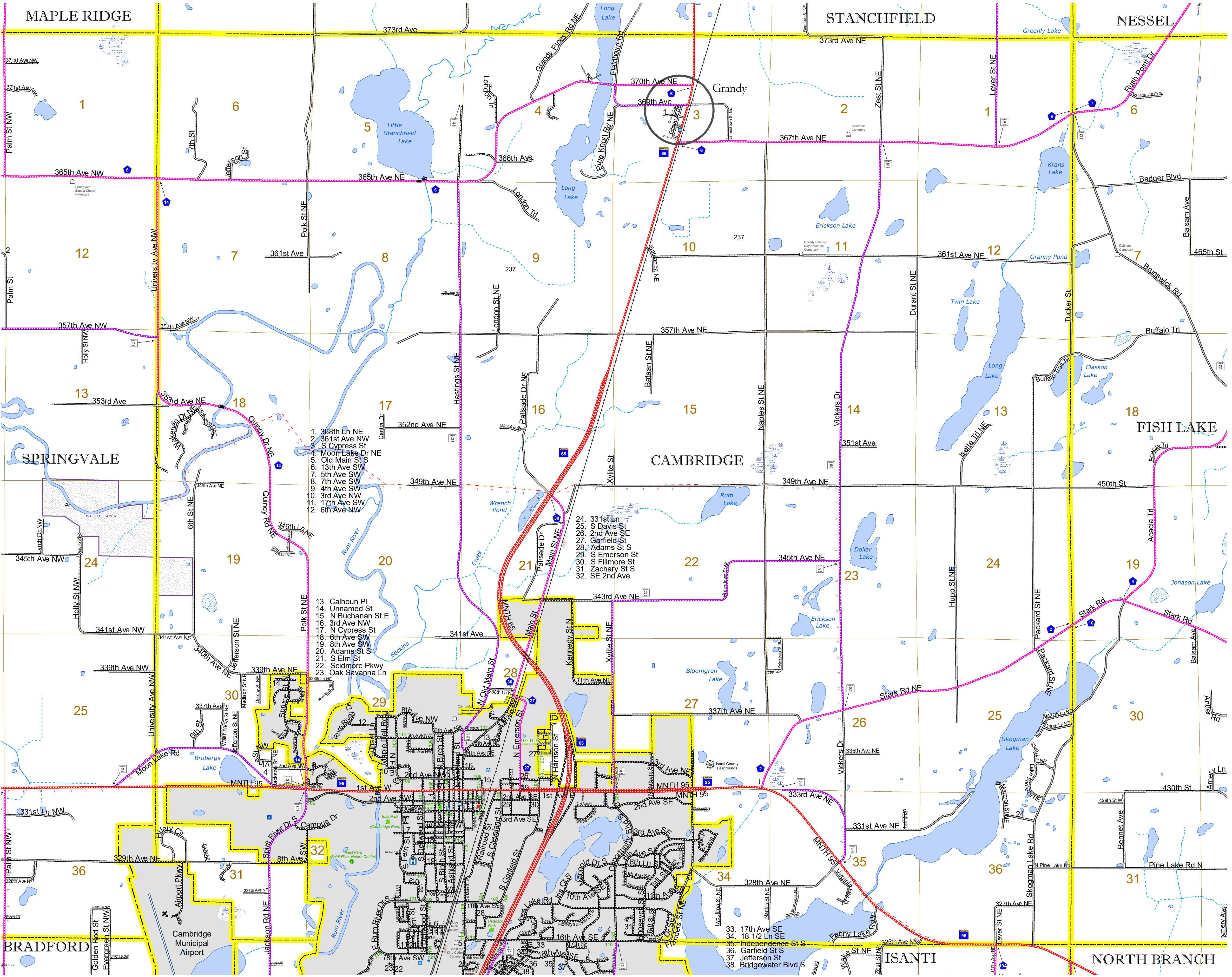
Projection:  
Transverse Mercator  
NAD 1986  
UTM Zone 15

North American Datum  
of 1986

ROAD AND ROADWAY FEATURES	
INTERSTATE	CONCRETE
US HIGHWAY	BITUMINOUS
MN HIGHWAY	GRAVEL
COUNTY STATE AID HIGHWAY	DIRT/UNIMPROVED
COUNTY ROAD	OTHER
TOWNSHIP ROAD	UNKNOWN
UNORGANIZED TERRITORY ROAD	
OTHER ROADS	RAMP OR CONNECTOR
Municipal	Private
National Monument	National Wildlife Refuge
State Park	State Game Preserve
RAILROAD AND RAILWAY FEATURES	
EMPIRE BUILDER STATION (AMTRAK)	COMMERCIAL AIRPORT
NORTHSTAR STATION (COMPUTER)	GENERAL AIRPORT
LIGHT RAIL	AIRSTRIP
BLUE LINE	SEAPLANE
GREEN LINE	AIRPORT RUNWAY
INFRASTRUCTURE FEATURES	
LONG BRIDGE (200' OR GREATER SPAN)	TRIAL LAND
MAJOR BRIDGE (20' TO 200' SPAN)	STATE OF MINNESOTA
MINOR BRIDGE (5' TO 20' SPAN)	COUNTY
DAM	MUNICIPALITY
LOCK AND DAM	UNORGANIZED TERRITORY
	FEDERAL ADJUSTED URBAN AREA (2014)
	CIVIL TOWNSHIP
	CONGRESSIONAL TOWNSHIP
	SECTION
	MILITARY
	VOYAGEURS NATIONAL PARK
	BOUNDARY WATERS CANOE AREA WILDERNESS
	STATE PARK
	REGIONAL PARK
	NATIONAL FOREST
	NATIONAL AND STATE FOREST
	STATE FOREST
	NATIONAL TRAIL
	WILDLIFE REFUGE AREA
	WILDLIFE MANAGEMENT AREA
HYDROLOGIC FEATURES	
	RIVER OR STREAM (PERMANENT)
	LAKE, POND OR RESERVOIR
	STREAM (INTERMITTENT)
	DRAINAGE DITCH
	WETLAND
	ISLAND OR LAND
	REGIONAL WATERSHED
CITY CENTERS	
STATE CAPITAL	COUNTY SEAT
CITY CENTER	UNINCORPORATED COMMUNITY
PUBLIC SERVICE FEATURES	
MNDOT OFFICE	BOUNDARY WATERS CANOE AREA WILDERNESS
MNDOT TRUCK STATION	STATE PARK
HIGHWAY PATROL DISTRICT OFFICE	REGIONAL PARK
STATE TRAVEL INFORMATION CENTER	NATIONAL FOREST
REST AREA (Full Service)	NATIONAL AND STATE FOREST
REST AREA (Vault Toilet)	STATE FOREST
WAYSIDE (Vault or Potty Toilet)	NATIONAL TRAIL
PARK AND RIDE LOT	WILDLIFE REFUGE AREA
PORT OF ENTRY	WILDLIFE MANAGEMENT AREA
PUBLIC ACCESS POINT	RIVER OR STREAM (PERMANENT)
MN STATE COLLEGE AND UNIVERSITY SYSTEM (MNSCU)	LAKE, POND OR RESERVOIR
UNIVERSITY OF MN SYSTEM	STREAM (INTERMITTENT)
FAIRGROUNDS	DRAINAGE DITCH
CULTURAL FEATURES	
STATE HISTORICAL MARKER	WETLAND
HISTORIC DISTRICT	ISLAND OR LAND
HISTORIC SITE	REGIONAL WATERSHED
MONUMENT	



Population (U.S. Census 2010): 2379



To request information from this document in an alternative format, call 651-366-4718 or 1-800-657-3774 (Greater Minnesota); 711 or 1-800-627-3529 (Minnesota Relay). You may also send an e-mail to ADAREquest.dot@state.mn.us. (Please request at least one week in advance.)