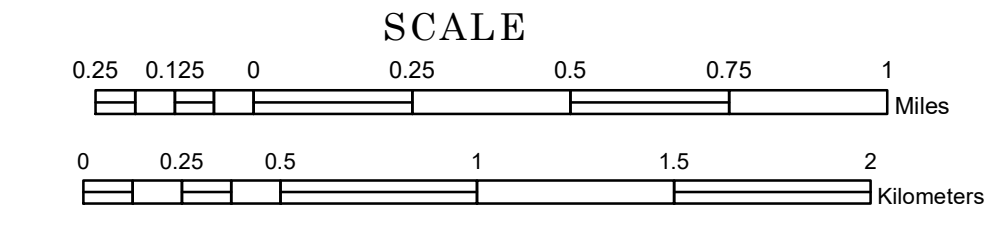


TOWNSHIP OF OXFORD

PREPARED BY THE
MINNESOTA DEPARTMENT OF TRANSPORTATION
OFFICE OF TRANSPORTATION SYSTEM MANAGEMENT

IN COOPERATION WITH
U.S. DEPARTMENT OF TRANSPORTATION
FEDERAL HIGHWAY ADMINISTRATION



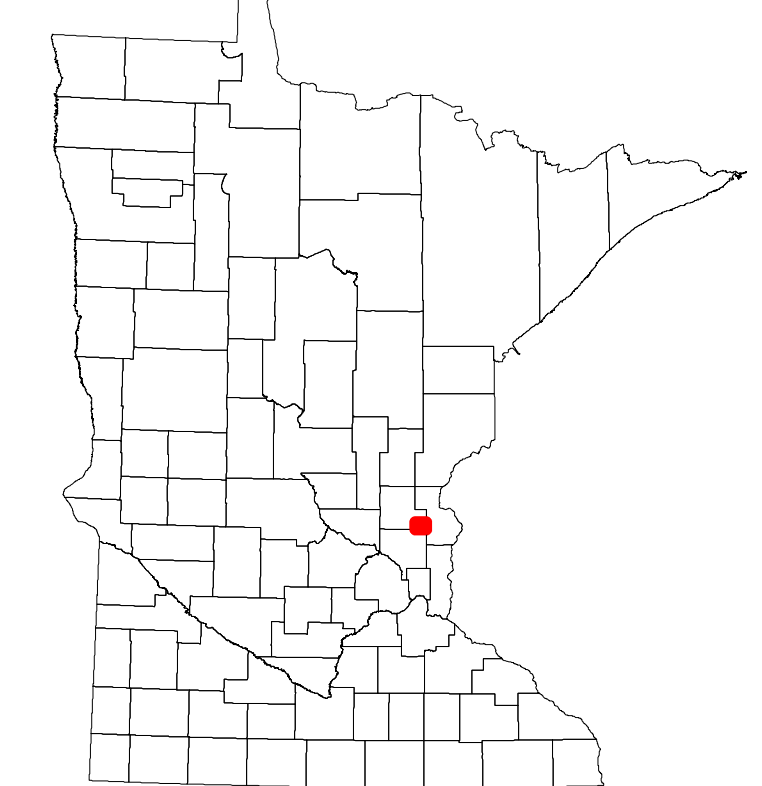
2023

Projection:
Transverse Mercator
NAD 1986
UTM Zone 15

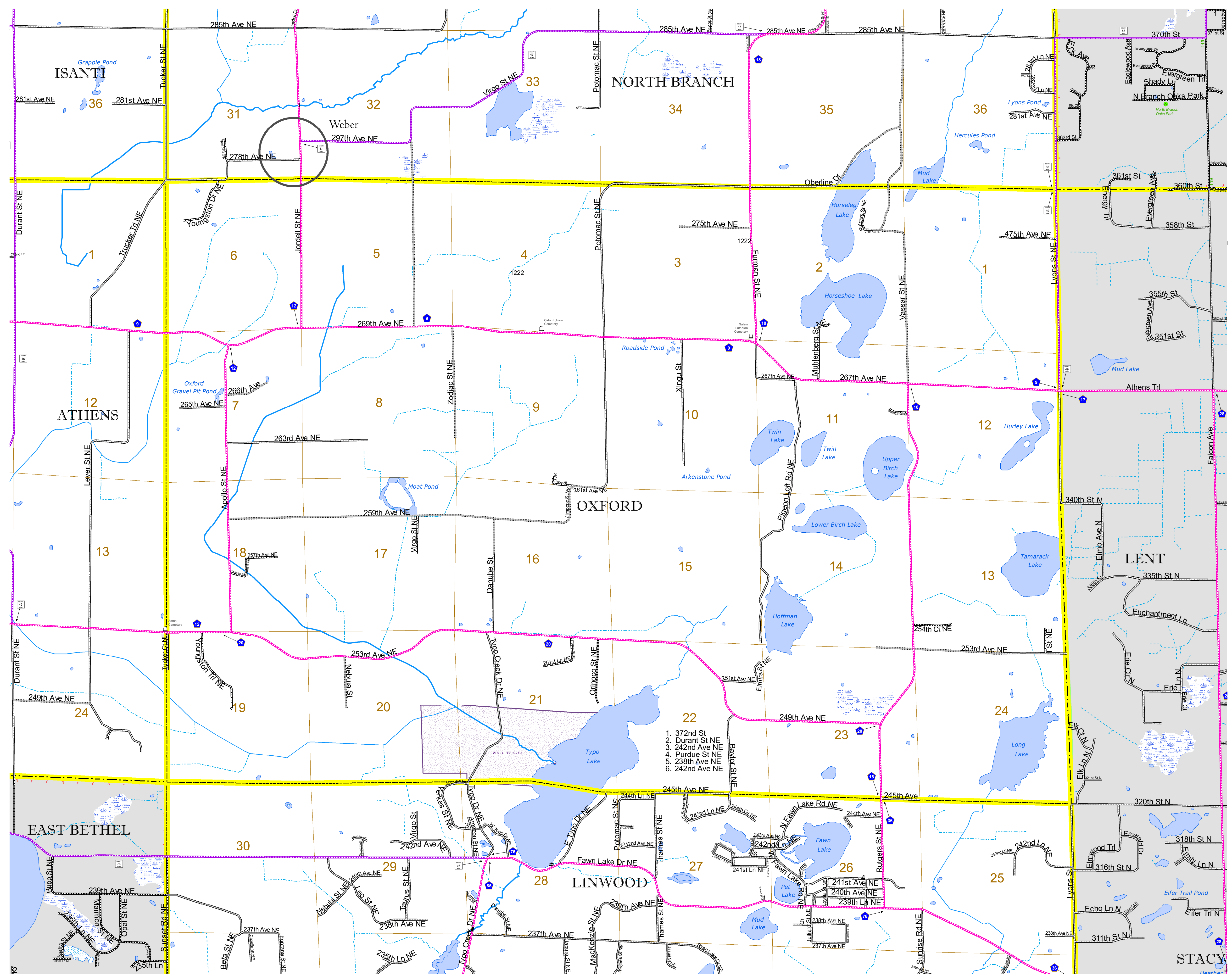


North American Datum
of 1986

ROAD AND ROADWAY FEATURES		BOUNDARY FEATURES	
INTERSTATE	[Symbol]	CONCRETE	[Symbol]
US HIGHWAY	[Symbol]	BITUMINOUS	[Symbol]
MN HIGHWAY	[Symbol]	GRAVEL	[Symbol]
COUNTY STATE AID HIGHWAY	[Symbol]	DIRT/UNIMPROVED	[Symbol]
COUNTY ROAD	[Symbol]	OTHER	[Symbol]
TOWNSHIP ROAD	[Symbol]	UNKNOWN	[Symbol]
UNORGANIZED TERRITORY ROAD	[Symbol]		
OTHER ROADS			
Municipal	[Symbol]	RAMP OR CONNECTOR	[Symbol]
Private	[Symbol]	INTERSTATE EXIT	[Symbol]
National Monument	[Symbol]	STATE PARK	[Symbol]
State Forest	[Symbol]	NATIONAL FOREST	[Symbol]
Nature Service	[Symbol]	State Game	[Symbol]
National Park	[Symbol]	National Wildlife	[Symbol]
Military	[Symbol]	State Park	[Symbol]
		Preserve	[Symbol]
RAILROAD AND RAILWAY FEATURES		AVIATION FEATURES	
EMPIRE BUILDER STATION (AMTRAK)	[Symbol]	COMMERCIAL AIRPORT	[Symbol]
NORTHSTAR STATION (COMMUTER)	[Symbol]	GENERAL AIRPORT	[Symbol]
LIGHT RAIL	[Symbol]	AIRSTRIP	[Symbol]
BLUE LINE	[Symbol]	SEAPLANE	[Symbol]
GREEN LINE	[Symbol]	AIRPORT RUNWAY	[Symbol]
INFRASTRUCTURE FEATURES			
LONG BRIDGE (200' OR GREATER SPAN)	[Symbol]	TRIBAL LAND	[Symbol]
MAJOR BRIDGE (50' TO 200' SPAN)	[Symbol]	STATE OF MINNESOTA	[Symbol]
MINOR BRIDGE (5' TO 50' SPAN)	[Symbol]	COUNTY	[Symbol]
DAM	[Symbol]	MUNICIPALITY	[Symbol]
LOCK AND DAM	[Symbol]	UNORGANIZED TERRITORY	[Symbol]
		FEDERAL ADJUSTED URBAN AREA (2014)	[Symbol]
		CIVIL TOWNSHIP	[Symbol]
		CONGRESSIONAL TOWNSHIP	[Symbol]
		SECTION	[Symbol]
		MILITARY	[Symbol]
		VOYAGEURS NATIONAL PARK	[Symbol]
		BOUNDARY WATERS CANOE AREA WILDERNESS	[Symbol]
		STATE PARK	[Symbol]
		REGIONAL PARK	[Symbol]
		NATIONAL FOREST	[Symbol]
		NATIONAL AND STATE FOREST	[Symbol]
		STATE FOREST	[Symbol]
		WILDLIFE REFUGE AREA	[Symbol]
		WILDLIFE MANAGEMENT AREA	[Symbol]
		HYDROLOGIC FEATURES	
		RIVER OR STREAM (PERMANENT)	[Symbol]
		LAKE, POND OR RESERVOIR	[Symbol]
		STREAM (INTERMITTENT)	[Symbol]
		DRAINAGE DITCH	[Symbol]
		WETLAND	[Symbol]
		ISLAND OR LAND	[Symbol]
		REGIONAL WATERSHED	[Symbol]



Population (U.S. Census 2010): 888



To request information from this document in an alternative format, call 651-366-4718 or 1-800-657-3774 (Greater Minnesota); 711 or 1-800-627-3529 (Minnesota Relay). You may also send an e-mail to ADarequest.dot@state.mn.us. (Please request at least one week in advance.)