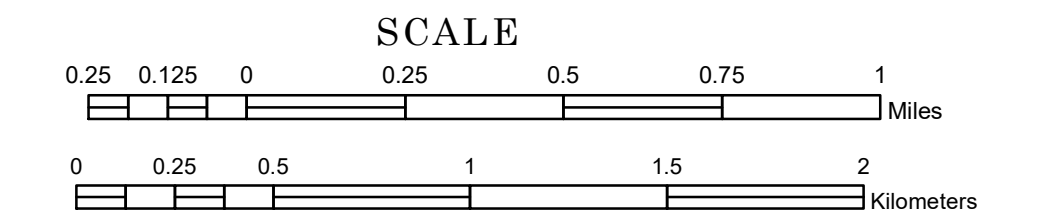


# TOWNSHIP OF SPRINGVALE

PREPARED BY THE  
MINNESOTA DEPARTMENT OF TRANSPORTATION  
OFFICE OF TRANSPORTATION SYSTEM MANAGEMENT

IN COOPERATION WITH  
U.S. DEPARTMENT OF TRANSPORTATION  
FEDERAL HIGHWAY ADMINISTRATION



1 in = 1,600 ft

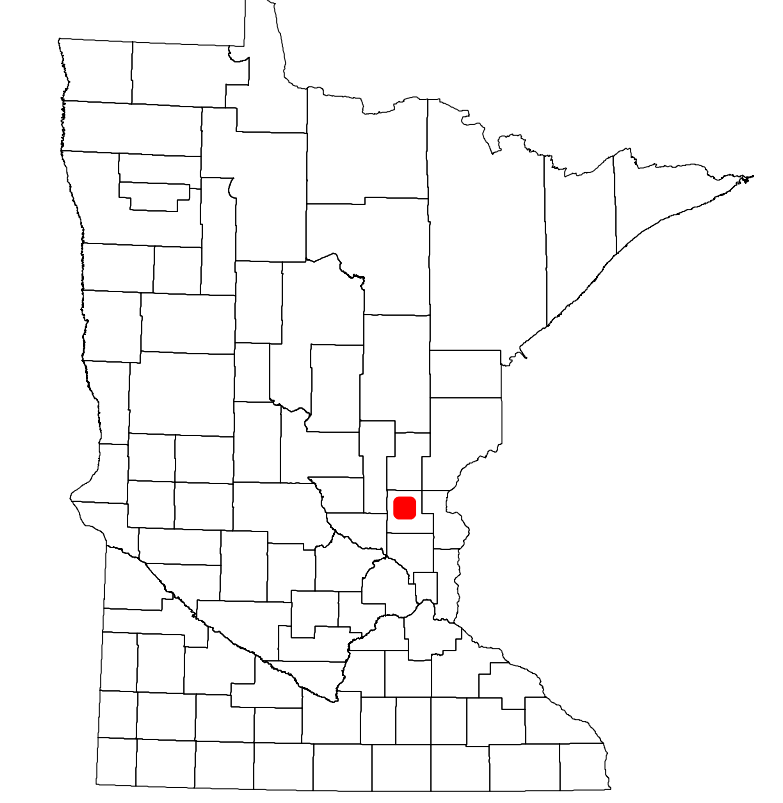
2023

Projection:  
Transverse Mercator  
NAD 1986  
UTM Zone 15

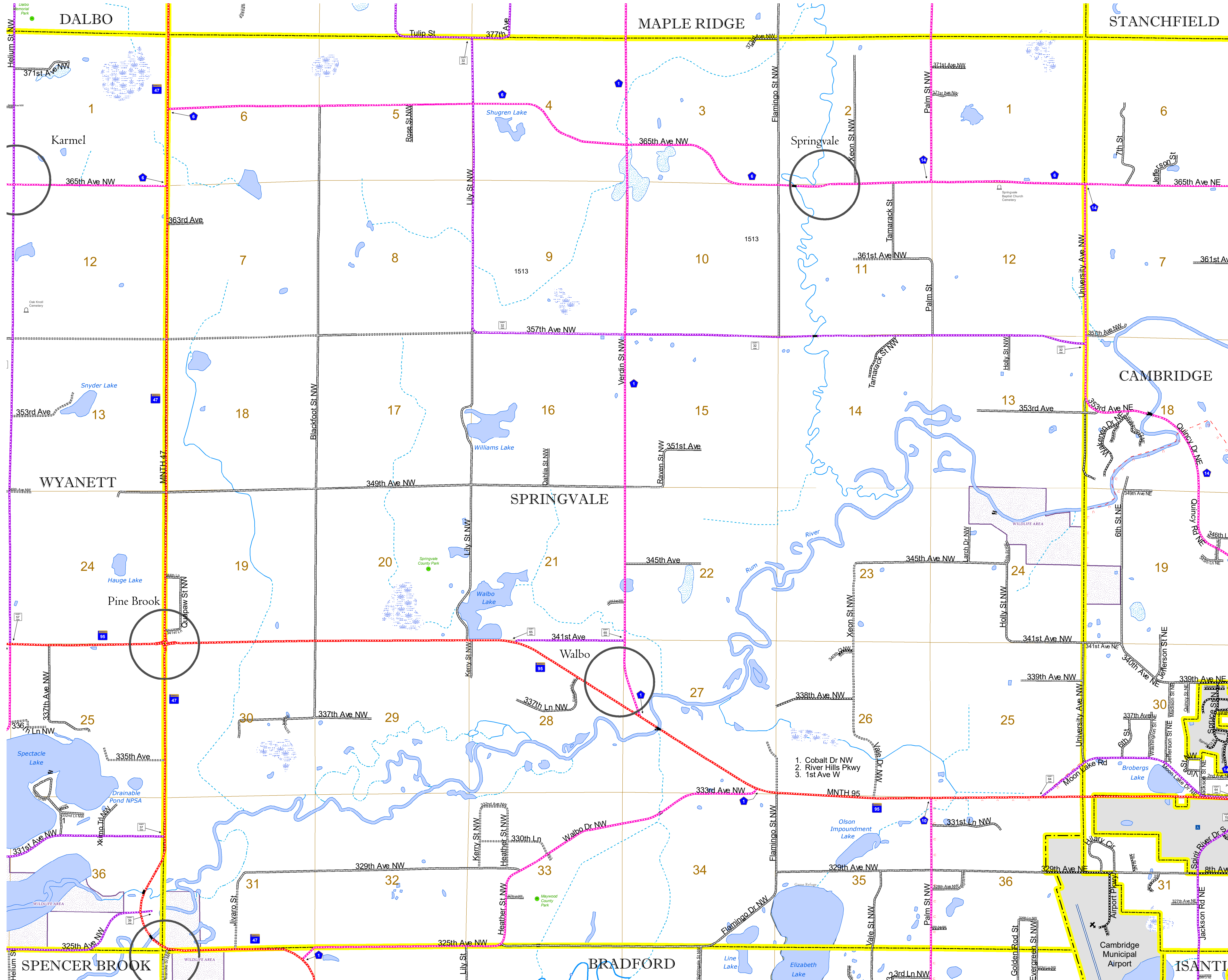


North American Datum  
of 1986

ROAD AND ROADWAY FEATURES	
INTERSTATE	CONCRETE
US HIGHWAY	BITUMINOUS
MN HIGHWAY	GRAVEL
COUNTY STATE AID HIGHWAY	DIRT/UNIMPROVED
COUNTY ROAD	OTHER
TOWNSHIP ROAD	UNKNOWN
UNORGANIZED TERRITORY ROAD	
OTHER ROADS	
MUNICIPAL	RAMP OR CONNECTOR
PRIVATE	INTERSTATE EXIT
NATIONAL MONUMENT	STATE OF MINNESOTA
NATIONAL PARK	COUNTY
NATIONAL WILDLIFE REFUGES	MUNICIPALITY
STATE PARK	UNORGANIZED TERRITORY
PRESERVE	FEDERAL ADJUSTED URBAN AREA (2014)
RAILROAD AND RAILWAY FEATURES	
EMPIRE BUILDER STATION (AMTRAK)	COMMERCIAL AIRPORT
NORTHSTAR STATION (COMMUTER)	GENERAL AIRPORT
LIGHT RAIL	AIRSTRIP
BLUE LINE	SEAPLANE
GREEN LINE	AIRPORT RUNWAY
INFRASTRUCTURE FEATURES	
LONG BRIDGE (200' OR GREATER SPAN)	TRIAL LAND
MAJOR BRIDGE (20' TO 200' SPAN)	STATE OF MINNESOTA
MINOR BRIDGE (5' TO 20' SPAN)	COUNTY
DAM	MUNICIPALITY
LOCK AND DAM	UNORGANIZED TERRITORY
CITY CENTERS	
STATE CAPITAL	UNINCORPORATED TOWNSHIP
COUNTY SEAT	SECTION
CITY CENTER	MILITARY
UNINCORPORATED COMMUNITY	VOYAGEURS NATIONAL PARK
PUBLIC SERVICE FEATURES	
MNDOT OFFICE	BOUNDARY WATERS CANOE AREA WILDERNESS
MNDOT TRUCK STATION	STATE PARK
HIGHWAY PATROL DISTRICT OFFICE	REGIONAL PARK
STATE TRAVEL INFORMATION CENTER	NATIONAL FOREST
REST AREA (FULL SERVICE)	NATIONAL AND STATE FOREST
REST AREA (VAULT TOILET)	STATE FOREST
WAYSIDE (VAULT OR POT TOILET)	NATIONAL TRAIL
PARK AND RIDE LOT	WILDLIFE REFUGE AREA
PORT OF ENTRY	WILDLIFE MANAGEMENT AREA
PUBLIC ACCESS POINT	HYDROLOGIC FEATURES
MN STATE COLLEGE AND UNIVERSITY SYSTEM (MNSCU)	RIVER OR STREAM (PERMANENT)
UNIVERSITY OF MN SYSTEM	LAKE, POND OR RESERVOIR
FAIRGROUNDS	STREAM (INTERMITTENT)
CULTURAL FEATURES	
STATE HISTORICAL MARKER	DRAINAGE DITCH
HISTORIC DISTRICT	WETLAND
HISTORIC SITE	ISLAND OR LAND
MONUMENT	REGIONAL WATERSHED



Population (U.S. Census 2010): 1447



To request information from this document in an alternative format, call 651-366-4718 or 1-800-657-3774 (Greater Minnesota); 711 or 1-800-627-3529 (Minnesota Relay). You may also send an e-mail to ADarequest.dot@state.mn.us. (Please request at least one week in advance.)