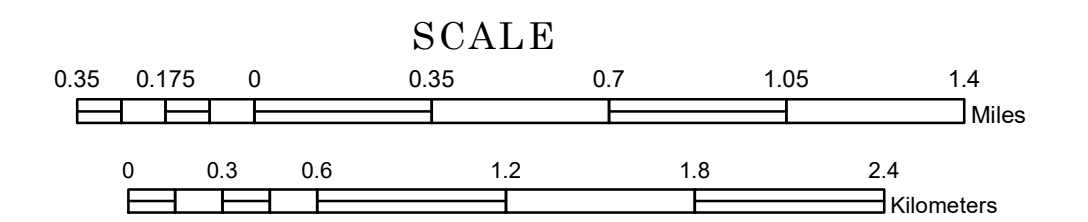


TOWNSHIP OF CAMP RELEASE

PREPARED BY THE
MINNESOTA DEPARTMENT OF TRANSPORTATION
OFFICE OF TRANSPORTATION SYSTEM MANAGEMENT

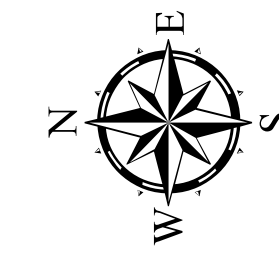
IN COOPERATION WITH
U.S. DEPARTMENT OF TRANSPORTATION
FEDERAL HIGHWAY ADMINISTRATION



1 in = 2,000 ft

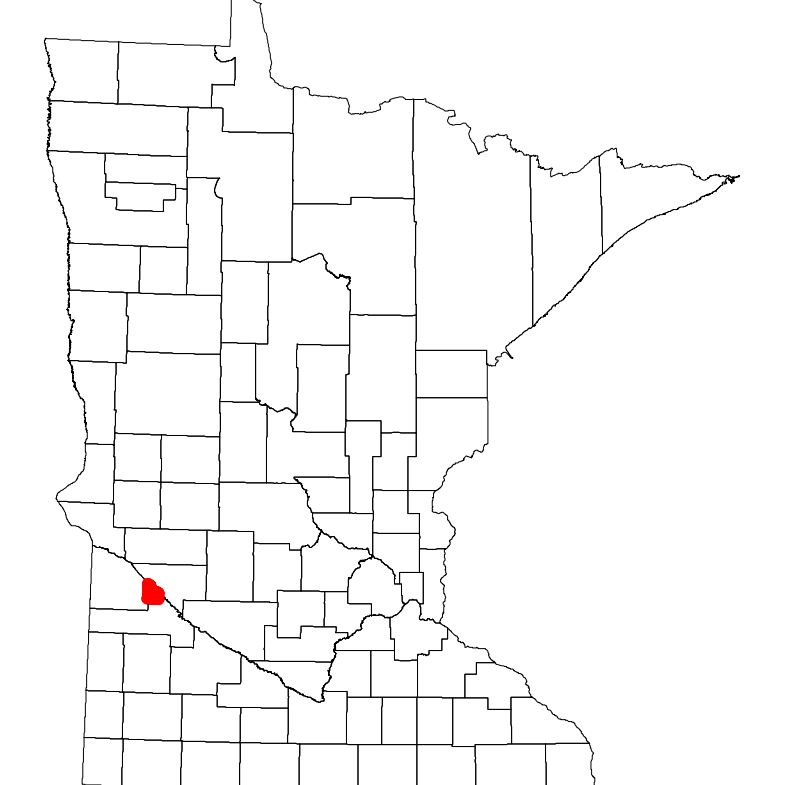
2022

Projection:
Transverse Mercator
NAD 1986
UTM Zone 15

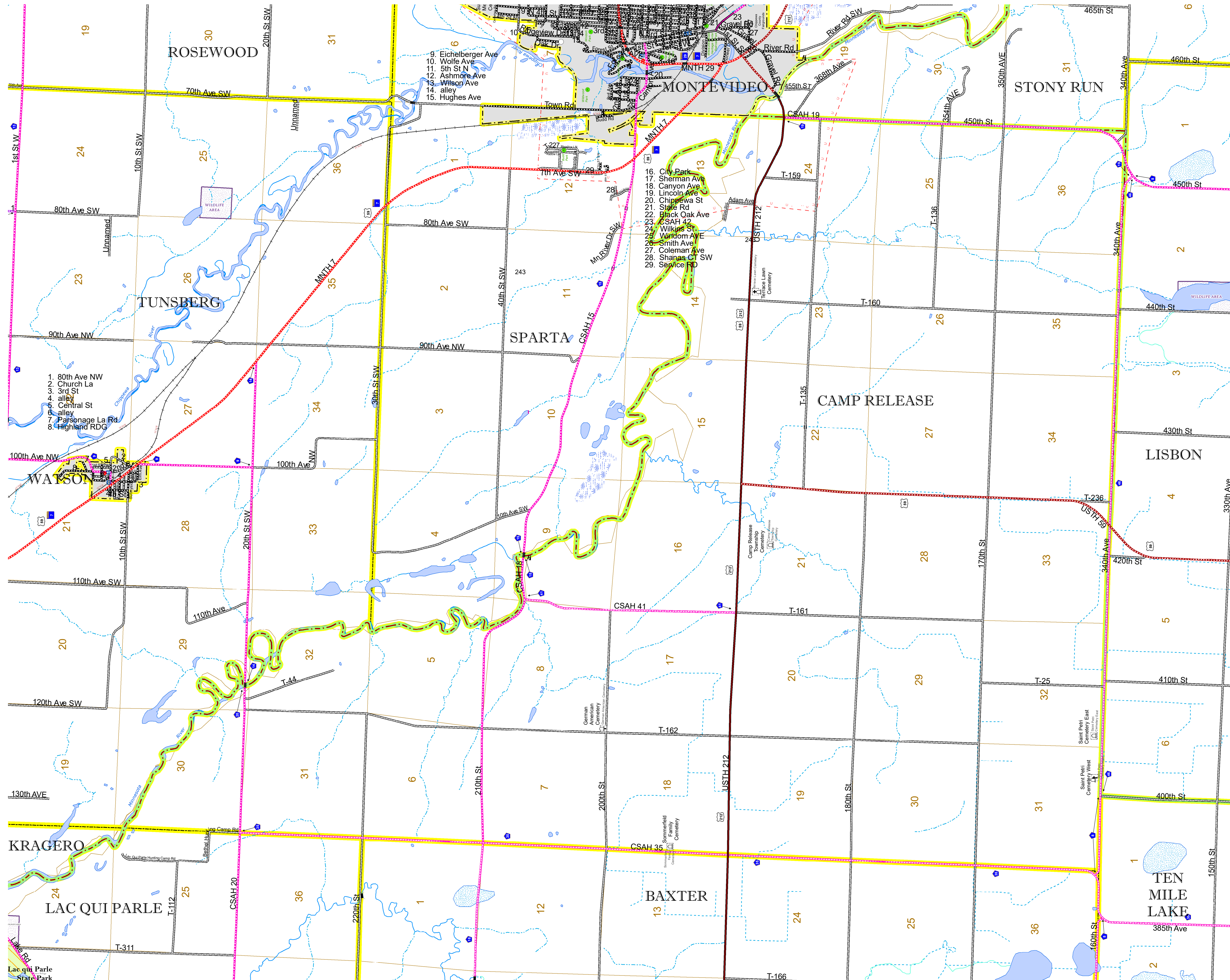


North American Datum
of 1986

ROAD AND ROADWAY FEATURES		BOUNDARY FEATURES	
INTERSTATE		TRIBAL LAND	
US HIGHWAY		STATE OF MINNESOTA	
MN HIGHWAY		COUNTY	
COUNTY STATE AID HIGHWAY		MUNICIPALITY	
COUNTY ROAD		UNINCORPORATED TOWNSHIP	
TOWNSHIP ROAD		FEDERAL ADJUSTED URBAN AREA (2014)	
UNORGANIZED TERRITORY ROAD		CIVIL TOWNSHIP	
OTHER ROADS		CONGRESSIONAL TOWNSHIP	
Municipal		SECTION	
Private		MILITARY	
National Monument		VOYAGEURS NATIONAL PARK	
National Wildlife Refuge		BOUNDARY WATERS CANOE AREA WILDERNESS	
State Park		STATE PARK	
Preserve		REGIONAL PARK	
NATIONAL FOREST		NATIONAL FOREST	
STATE PARK		NATIONAL AND STATE FOREST	
RAILROAD AND RAILWAY FEATURES		STATE FOREST	
EMPIRE BUILDER STATION (AMTRAK)		WILDLIFE REFUGES AREA	
NORTHSTAR STATION (COMPUTER)		WILDLIFE MANAGEMENT AREA	
LIGHT RAIL		HYDROLOGIC FEATURES	
BLUE LINE		RIVER OR STREAM (PERMANENT)	
GREEN LINE		LAKE, POND OR RESERVOIR	
INFRASTRUCTURE FEATURES		STREAM (INTERMITTENT)	
LONG BRIDGE (200' OR GREATER SPAN)		DRAINAGE DITCH	
MAJOR BRIDGE (20' TO 200' SPAN)		WETLAND	
MINOR BRIDGE (5' TO 20' SPAN)		ISLAND OR LAND	
DAM		REGIONAL WATERSHED	
LOCK AND DAM			
CITY CENTERS			
STATE CAPITAL			
COUNTY SEAT			
CITY CENTER			
UNINCORPORATED COMMUNITY			
PUBLIC SERVICE FEATURES			
MNDOT OFFICE			
MNDOT TRUCK STATION			
HIGHWAY PATROL DISTRICT OFFICE			
STATE TRAVEL INFORMATION CENTER			
REST AREA (FULL SERVICE)			
REST AREA (VAULT TOILET)			
WAYSIDE (VAULT OR PIT TOILET)			
PARK AND RIDE LOT			
PORT OF ENTRY			
PUBLIC ACCESS POINT			
MN STATE COLLEGE AND UNIVERSITY SYSTEM (MNSCU)			
UNIVERSITY OF MN SYSTEM			
FAIRGROUNDS			
CULTURAL FEATURES			
STATE HISTORICAL MARKER			
HISTORIC DISTRICT			
HISTORIC SITE			
MONUMENT			



Population (U.S. Census 2010): 315



To request information from this document in an alternative format, call 651-366-4718 or 1-800-657-3774 (Greater Minnesota); 711 or 1-800-627-3529 (Minnesota Relay). You may also send an e-mail to ADarequest.dot@state.mn.us. (Please request at least one week in advance.)