

# TOWNSHIP OF NORDLAND

PREPARED BY THE  
MINNESOTA DEPARTMENT OF TRANSPORTATION  
OFFICE OF TRANSPORTATION SYSTEM MANAGEMENT

IN COOPERATION WITH  
U.S. DEPARTMENT OF TRANSPORTATION  
FEDERAL HIGHWAY ADMINISTRATION



1 in = 1,600 ft

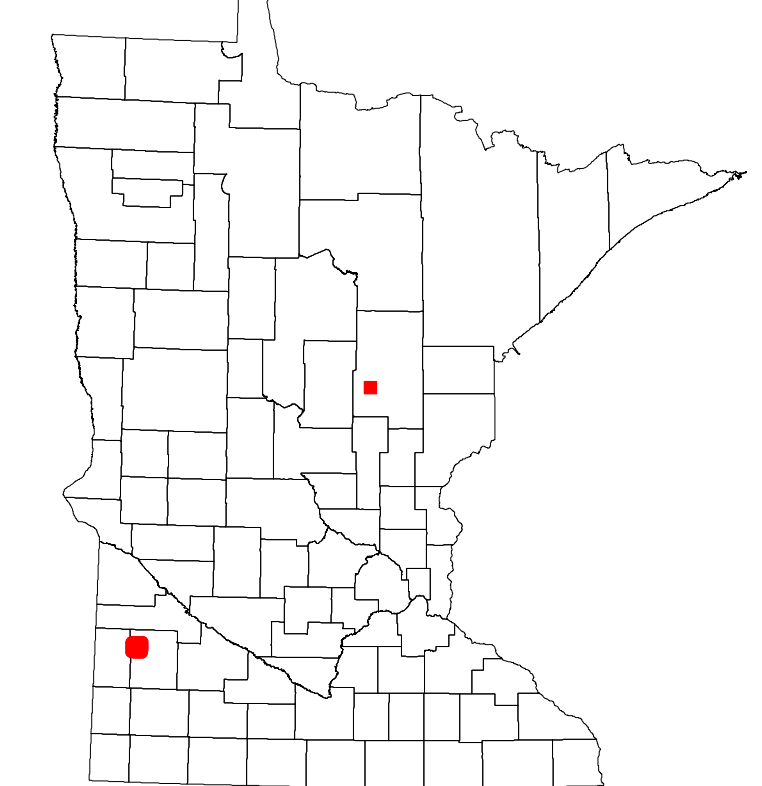
2023



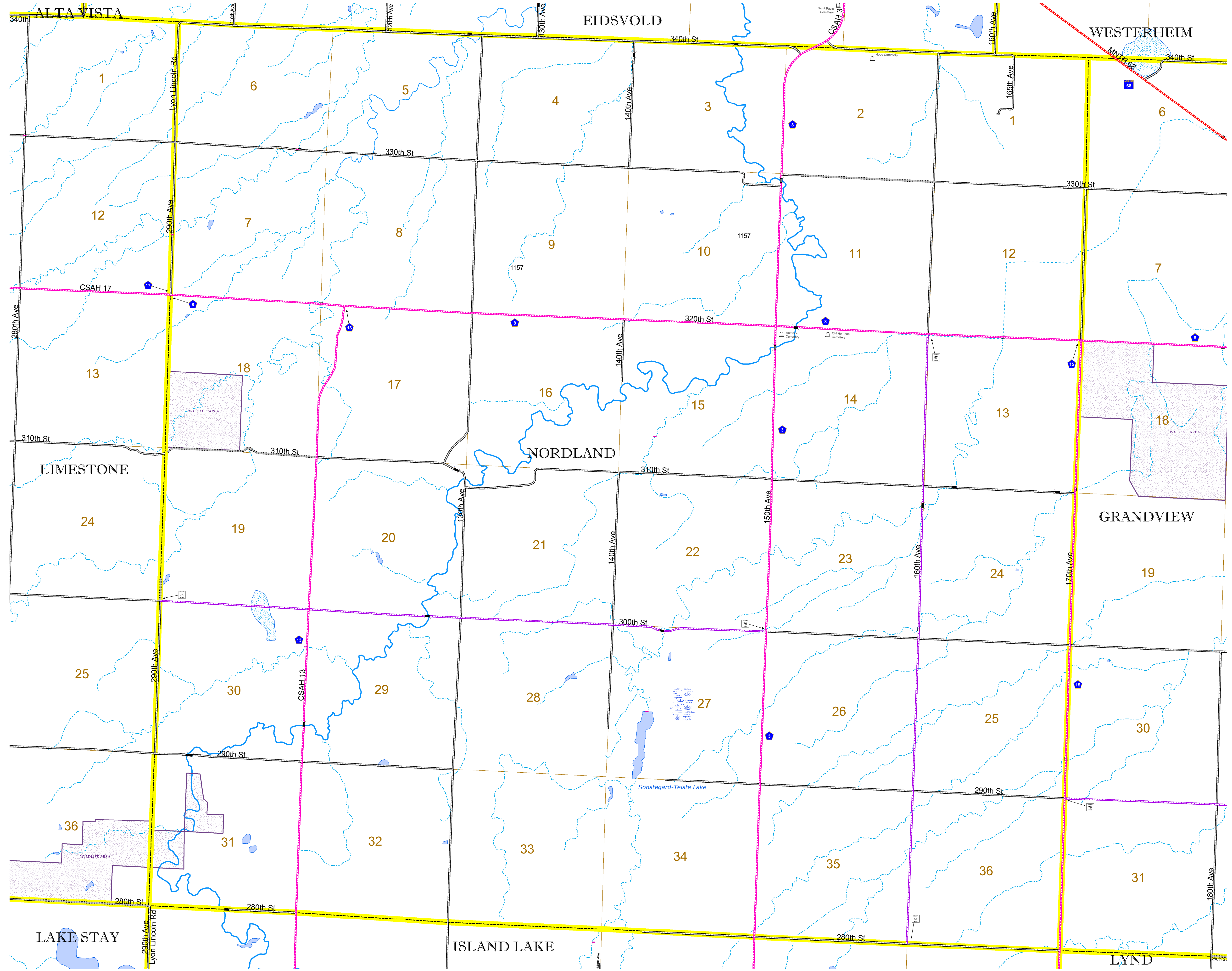
Projection:  
Transverse Mercator  
NAD 1986  
UTM Zone 15

North American Datum  
of 1986

<ul style="list-style-type: none"> <li>INTERSTATE</li> <li>US HIGHWAY</li> <li>MN HIGHWAY</li> <li>COUNTY STATE AID HIGHWAY</li> <li>COUNTY ROAD</li> <li>TOWNSHIP ROAD</li> <li>UNORGANIZED TERRITORY ROAD</li> <li>OTHER ROADS                     <ul style="list-style-type: none"> <li>Municipal</li> <li>Private</li> <li>National Park</li> <li>National Monument</li> <li>National Wildlife Refuge</li> <li>State Forest</li> <li>State Game Preserve</li> </ul> </li> <li>RAILROAD AND RAILWAY FEATURES                     <ul style="list-style-type: none"> <li>EMPIRE BUILDER STATION (AMTRAK)</li> <li>NORTHSTAR STATION (COMPLUTER)</li> <li>LIGHT RAIL</li> <li>BLUE LINE</li> <li>GREEN LINE</li> <li>LONG BRIDGE (300' OR GREATER SPAN)</li> <li>MAJOR BRIDGE (20' TO 300' SPAN)</li> <li>MINOR BRIDGE (5' TO 20' SPAN)</li> <li>DAM</li> <li>LOCK AND DAM</li> </ul> </li> <li>CITY CENTERS                     <ul style="list-style-type: none"> <li>STATE CAPITAL</li> <li>COUNTY SEAT</li> <li>CITY CENTER</li> <li>UNINCORPORATED COMMUNITY</li> </ul> </li> <li>PUBLIC SERVICE FEATURES                     <ul style="list-style-type: none"> <li>MNDOT OFFICE</li> <li>MNDOT TRUCK STATION</li> <li>HIGHWAY PATROL DISTRICT OFFICE</li> <li>STATE TRAVEL INFORMATION CENTER</li> <li>REST AREA (FULL SERVICE)</li> <li>REST AREA (VAULT TOILET)</li> <li>WAYSIDE (VAULT OR PITY TOILET)</li> <li>PARK AND RIDE LOT</li> <li>PORT OF ENTRY</li> <li>PUBLIC ACCESS POINT</li> <li>MN STATE COLLEGE AND UNIVERSITY SYSTEM (MNSCU)</li> <li>UNIVERSITY OF MN SYSTEM</li> <li>FAIRGROUNDS</li> <li>CULTURAL FEATURES                             <ul style="list-style-type: none"> <li>STATE HISTORICAL MARKER</li> <li>HISTORIC DISTRICT</li> <li>HISTORIC SITE</li> <li>MONUMENT</li> </ul> </li> </ul> </li> </ul>	<ul style="list-style-type: none"> <li>CONCRETE</li> <li>BITUMINOUS</li> <li>GRAVEL</li> <li>DIRT/UNIMPROVED</li> <li>OTHER</li> <li>UNKNOWN</li> <li>RAMP OR CONNECTOR</li> <li>INTERSTATE EXIT</li> <li>GREAT RIVER ROAD</li> <li>AVIATION FEATURES                     <ul style="list-style-type: none"> <li>COMMERCIAL AIRPORT</li> <li>GENERAL AIRPORT</li> <li>AIRSTRIP</li> <li>SEAPLANE</li> <li>AIRPORT RUNWAY</li> </ul> </li> <li>BOUNDARY FEATURES                     <ul style="list-style-type: none"> <li>TRIBAL LAND</li> <li>STATE OF MINNESOTA</li> <li>COUNTY</li> <li>MUNICIPALITY</li> <li>UNORGANIZED TERRITORY</li> <li>FEDERAL ADJUSTED URBAN AREA (2014)</li> <li>CIVIL TOWNSHIP</li> <li>CONGRESSIONAL TOWNSHIP</li> <li>SECTION</li> <li>MILITARY</li> <li>VOYAGEURS NATIONAL PARK</li> <li>BOUNDARY WATERS CANOE AREA WILDERNESS</li> <li>STATE PARK</li> <li>REGIONAL PARK</li> <li>NATIONAL FOREST</li> <li>NATIONAL AND STATE FOREST</li> <li>STATE FOREST</li> <li>WILDLIFE REFUGUE AREA</li> <li>WILDLIFE MANAGEMENT AREA</li> <li>HYDROLOGIC FEATURES                             <ul style="list-style-type: none"> <li>RIVER OR STREAM (PERENNIAL)</li> <li>LAKE, POND OR RESERVOIR</li> <li>STREAM (INTERMITTENT)</li> <li>DRAINAGE DITCH</li> <li>WETLAND</li> <li>ISLAND OR LAND</li> <li>REGIONAL WATERSHED</li> </ul> </li> </ul> </li> </ul>
--	--



Population (U.S. Census 2010): 213



To request information from this document in an alternative format, call 651-366-4718 or 1-800-657-3774 (Greater Minnesota); 711 or 1-800-627-3529 (Minnesota Relay). You may also send an e-mail to ADArequest.dot@state.mn.us. (Please request at least one week in advance.)