

TOWNSHIP OF AUGSBURG

PREPARED BY THE
MINNESOTA DEPARTMENT OF TRANSPORTATION
OFFICE OF TRANSPORTATION SYSTEM MANAGEMENT

IN COOPERATION WITH
U.S. DEPARTMENT OF TRANSPORTATION
FEDERAL HIGHWAY ADMINISTRATION

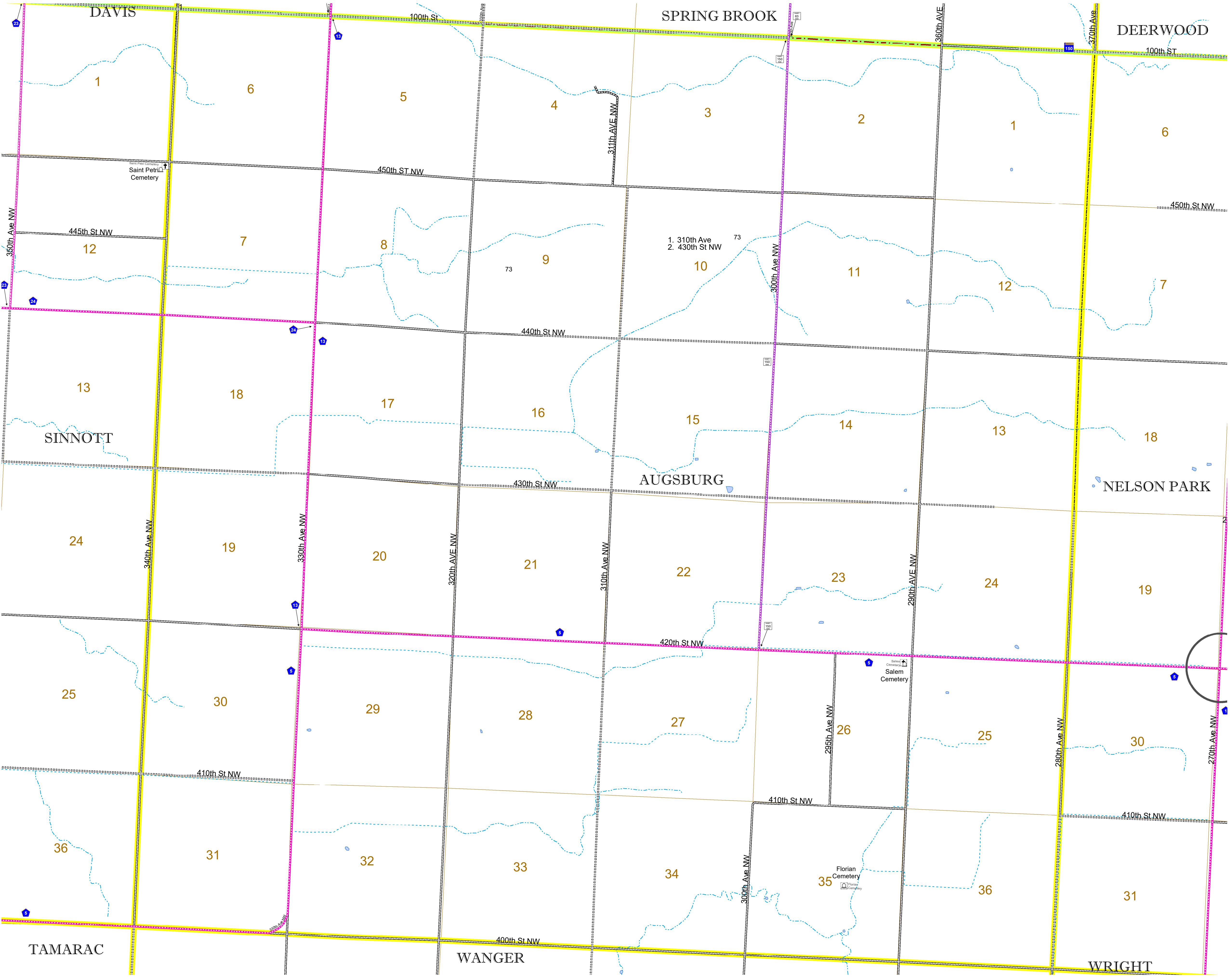


2022

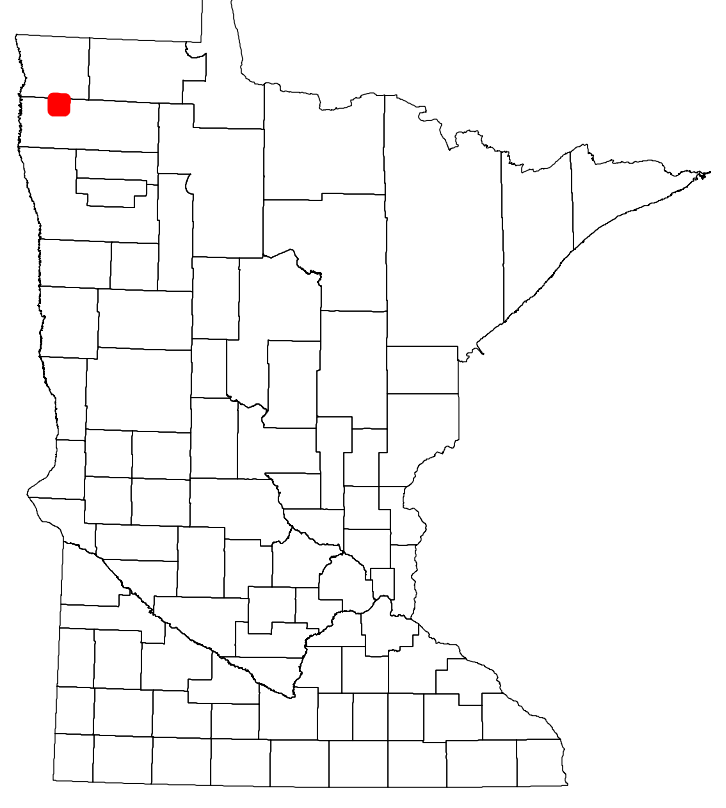
Projection:
Transverse Mercator
NAD 1986
UTM Zone 15



North American Datum
of 1986



ROAD AND ROADWAY FEATURES		BOUNDARY FEATURES	
INTERSTATE	CONCRETE	TRIBAL LAND	STATE OF MINNESOTA
US HIGHWAY	BITUMINOUS	COUNTY	MUNICIPALITY
MN HIGHWAY	GRAVEL	UNORGANIZED TERRITORY	FEDERAL ADJUSTED URBAN AREA (2014)
COUNTY STATE AID HIGHWAY	DIRT/UNIMPROVED	CIVIL TOWNSHIP	CONGRESSIONAL TOWNSHIP
COUNTY ROAD	OTHER	SECTION	MILITARY
TOWNSHIP ROAD	UNKNOWN	VOYAGEURS NATIONAL PARK	BOUNDRARY WATERS CANOE AREA WILDERNESS
UNORGANIZED TERRITORY ROAD		STATE PARK	NATIONAL FOREST
OTHER ROADS		NATIONAL AND STATE FOREST	STATE FOREST
Municipal		WILDLIFE REFUGUE AREA	WILDLIFE MANAGEMENT AREA
Private		NATIONAL TRAIL	HYDROLOGIC FEATURES
National Monument		WILDLIFE REFUGUE AREA	RIVER OR STREAM (PERMANENT)
National Wildlife Refuge		WILDLIFE REFUGUE AREA	LAKE, POND OR RESERVOIR
State Game Preserve		WILDLIFE REFUGUE AREA	STREAM (INTERMITTENT)
State Park Preserve		WILDLIFE REFUGUE AREA	DRAINAGE DITCH
State Park		WILDLIFE REFUGUE AREA	WETLAND
Preserve		WILDLIFE REFUGUE AREA	ISLAND OR LAND
		WILDLIFE REFUGUE AREA	REGIONAL WATERSHED
RAILROAD AND RAILWAY FEATURES		AVIATION FEATURES	
EMPIRE BUILDER STATION (AMTRAK)	COMMERCIAL AIRPORT	GENERAL AIRPORT	AIRSTRIP
NORTHSTAR STATION (COMMITTEE)	GENERAL AIRPORT	AIRSTRIP	SEAPLANE
LIGHT RAIL	GENERAL AIRPORT	AIRSTRIP	AIRPORT RUNWAY
BLUE LINE	GENERAL AIRPORT	AIRSTRIP	
GREEN LINE	GENERAL AIRPORT	AIRSTRIP	
INFRASTRUCTURE FEATURES		BOUNDARY FEATURES	
LONG BRIDGE (200' OR GREATER SPAN)	STATE OF MINNESOTA	COUNTY	MUNICIPALITY
MAJOR BRIDGE (20' TO 200' SPAN)	COUNTY	MUNICIPALITY	UNORGANIZED TERRITORY
MINOR BRIDGE (5' TO 20' SPAN)	COUNTY	MUNICIPALITY	FEDERAL ADJUSTED URBAN AREA (2014)
DAM	COUNTY	MUNICIPALITY	CIVIL TOWNSHIP
LOCK-AND-DAM	COUNTY	MUNICIPALITY	CONGRESSIONAL TOWNSHIP
CITY CENTERS		BOUNDARY FEATURES	
STATE CAPITAL	CITY CENTER	UNINCORPORATED COMMUNITY	SECTION
COUNTY SEAT	CITY CENTER	UNINCORPORATED COMMUNITY	MILITARY
CITY CENTER	CITY CENTER	UNINCORPORATED COMMUNITY	VOYAGEURS NATIONAL PARK
UNINCORPORATED COMMUNITY	CITY CENTER	UNINCORPORATED COMMUNITY	BOUNDRARY WATERS CANOE AREA WILDERNESS
PUBLIC SERVICE FEATURES		BOUNDARY FEATURES	
MNDOT OFFICE	STATE PARK	NATIONAL FOREST	STATE FOREST
MNDOT TRUCK STATION	STATE PARK	NATIONAL FOREST	STATE FOREST
HIGHWAY PATROL DISTRICT OFFICE	STATE PARK	NATIONAL FOREST	STATE FOREST
STATE TRAVEL INFORMATION CENTER	STATE PARK	NATIONAL FOREST	STATE FOREST
REST AREA (FULL SERVICE)	STATE PARK	NATIONAL FOREST	STATE FOREST
REST AREA (VAULT TOILET)	STATE PARK	NATIONAL FOREST	STATE FOREST
WAYSIDE (VAULT OR PITY TOILET)	STATE PARK	NATIONAL FOREST	STATE FOREST
PARK AND RIDE LOT	STATE PARK	NATIONAL FOREST	STATE FOREST
PORT OF ENTRY	STATE PARK	NATIONAL FOREST	STATE FOREST
PUBLIC ACCESS POINT	STATE PARK	NATIONAL FOREST	STATE FOREST
MN STATE COLLEGE AND UNIVERSITY SYSTEM (MNSCU)	STATE PARK	NATIONAL FOREST	STATE FOREST
UNIVERSITY OF MN SYSTEM	STATE PARK	NATIONAL FOREST	STATE FOREST
FAIRGROUNDS	STATE PARK	NATIONAL FOREST	STATE FOREST
CULTURAL FEATURES		BOUNDARY FEATURES	
STATE HISTORICAL MARKER	STATE PARK	NATIONAL FOREST	STATE FOREST
HISTORIC DISTRICT	STATE PARK	NATIONAL FOREST	STATE FOREST
HISTORIC SITE	STATE PARK	NATIONAL FOREST	STATE FOREST
MONUMENT	STATE PARK	NATIONAL FOREST	STATE FOREST



Population (U.S. Census 2010): 74

To request information from this document in an alternative format, call 651-366-4718 or 1-800-657-3774 (Greater Minnesota); 711 or 1-800-627-3529 (Minnesota Relay). You may also send an e-mail to ADArequest.dot@state.mn.us. (Please request at least one week in advance.)