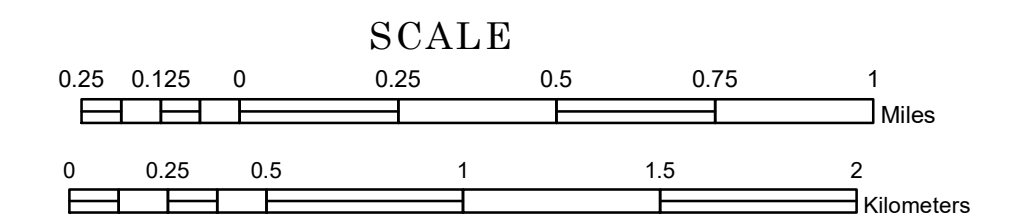


TOWNSHIP OF EAST PARK

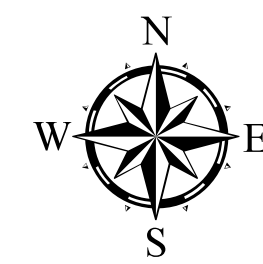
PREPARED BY THE
MINNESOTA DEPARTMENT OF TRANSPORTATION
OFFICE OF TRANSPORTATION SYSTEM MANAGEMENT

IN COOPERATION WITH
U.S. DEPARTMENT OF TRANSPORTATION
FEDERAL HIGHWAY ADMINISTRATION



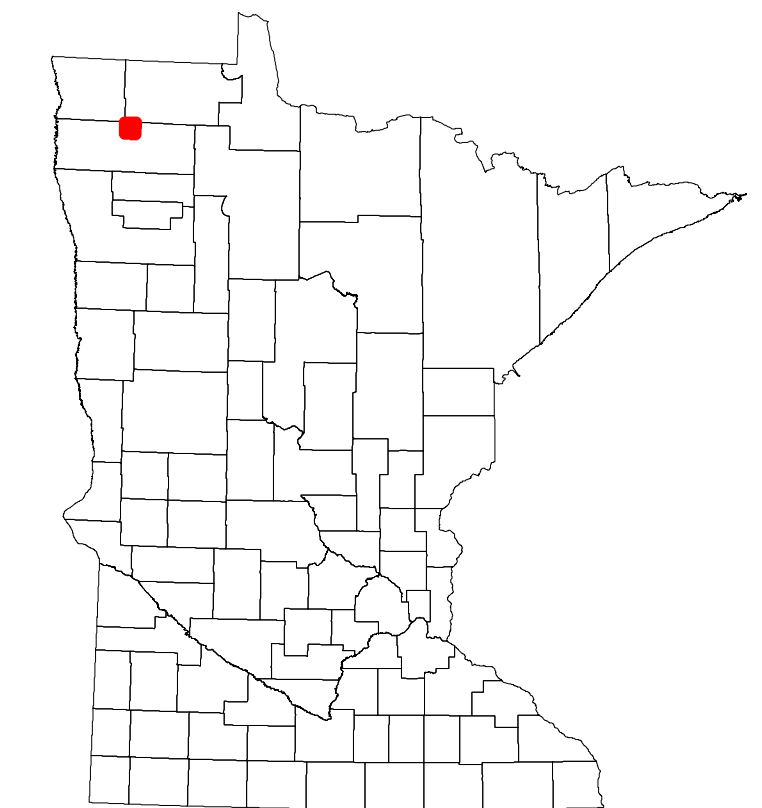
2022

Projection:
Transverse Mercator
NAD 1986
UTM Zone 15

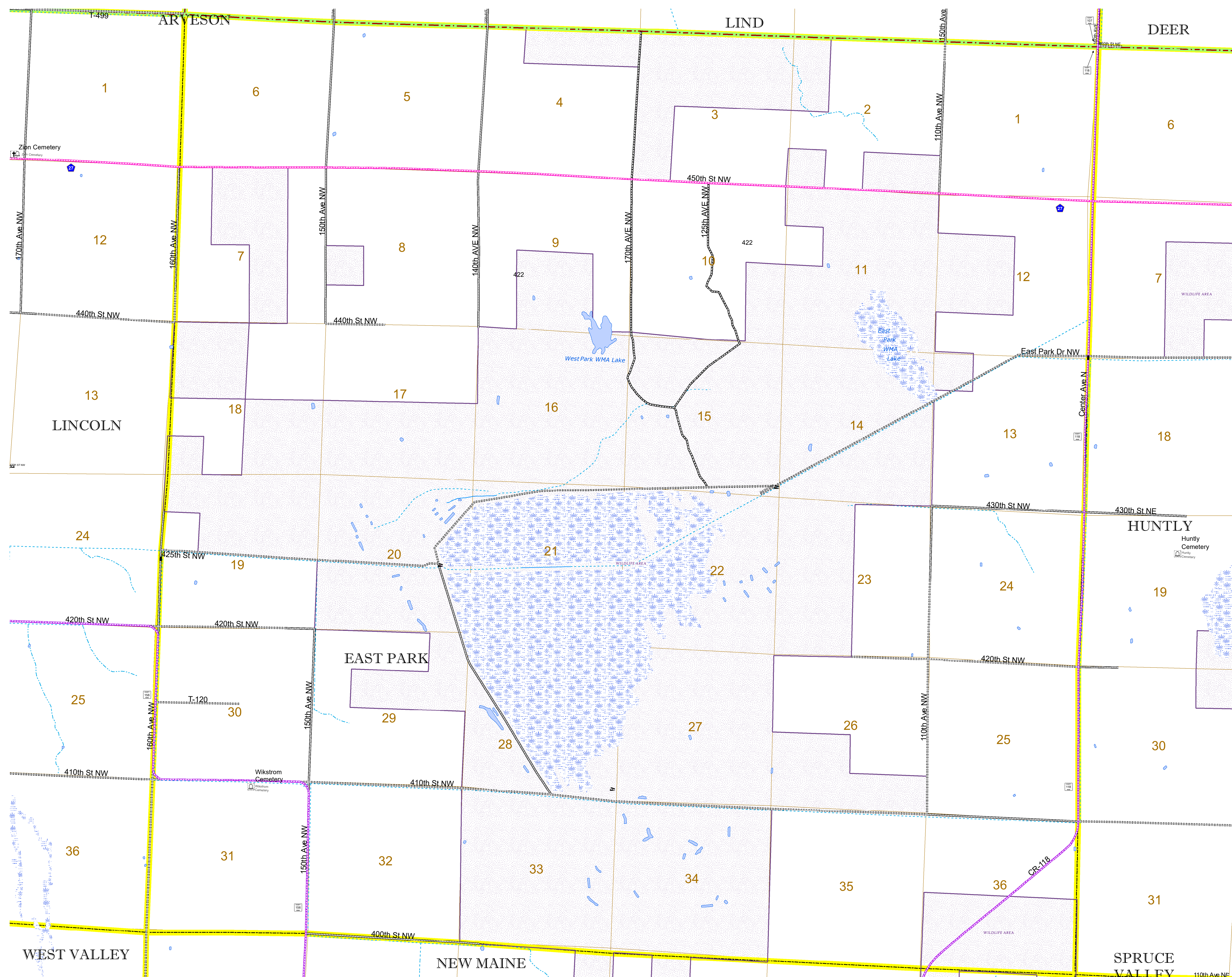


North American Datum
of 1986

ROAD AND ROADWAY FEATURES		RAILROAD AND RAILWAY FEATURES		AVIATION FEATURES	
INTERSTATE	CONCRETE	EMPIRE BUILDER STATION (AMTRAK)	COMMERCIAL AIRPORT	GENERAL AIRPORT	TRIBAL LAND
US HIGHWAY	BITUMINOUS	NORTHSTAR STATION (COMPUTER)	AIRSTRIP	AIRSTRIP	STATE OF MINNESOTA
MN HIGHWAY	GRAVEL	LIGHT RAIL	SEAPLANE	SEAPLANE	COUNTY
COUNTY STATE AID HIGHWAY	DIRT/UNIMPROVED	BLUE LINE	AIRPORT RUNWAY	AIRPORT RUNWAY	MUNICIPALITY
COUNTY ROAD	OTHER	GREEN LINE	BOUNDARY FEATURES	BOUNDARY FEATURES	UNINCORPORATED TOWNSHIP
TOWNSHIP ROAD	UNKNOWN	INFRASTRUCTURE FEATURES	LONG BRIDGE (200' OR GREATER SPAN)	LONG BRIDGE (200' OR GREATER SPAN)	FEDERAL ADJUSTED URBAN AREA (2014)
UNORGANIZED TERRITORY ROAD	RAMP OR CONNECTOR	MAJOR BRIDGE (20' TO 300' SPAN)	MAJOR BRIDGE (20' TO 300' SPAN)	MAJOR BRIDGE (20' TO 300' SPAN)	CIVIL TOWNSHIP
OTHER ROADS	INTERSTATE EXIT	MINOR BRIDGE (5' TO 20' SPAN)	MINOR BRIDGE (5' TO 20' SPAN)	MINOR BRIDGE (5' TO 20' SPAN)	CONGRESSIONAL TOWNSHIP
Municipal	RAILROAD AND RAILWAY FEATURES	LOCK AND DAM	LOCK AND DAM	LOCK AND DAM	CITY CENTERS
Private	EMPIRE BUILDER STATION (AMTRAK)	STATE CAPITAL	STATE CAPITAL	STATE CAPITAL	COUNTY SEAT
National Monument	NORTHSTAR STATION (COMPUTER)	CITY CENTER	CITY CENTER	CITY CENTER	CITY CENTER
State Forest	LIGHT RAIL	PUBLIC SERVICE FEATURES	PUBLIC SERVICE FEATURES	PUBLIC SERVICE FEATURES	MNDOT OFFICE
State Game	BLUE LINE	MNDOT TRUCK STATION	MNDOT TRUCK STATION	MNDOT TRUCK STATION	HIGHWAY PATROL DISTRICT OFFICE
Preserve	GREEN LINE	STATE TRAVEL INFORMATION CENTER	STATE TRAVEL INFORMATION CENTER	STATE TRAVEL INFORMATION CENTER	REST AREA (FULL SERVICE)
	INFRASTRUCTURE FEATURES	REST AREA (VAULT TOILET)	REST AREA (VAULT TOILET)	REST AREA (VAULT TOILET)	WAYSIDE (VAULT OR PIT TOILET)
	LONG BRIDGE (200' OR GREATER SPAN)	PARK AND RIDE LOT	PARK AND RIDE LOT	PARK AND RIDE LOT	PORT OF ENTRY
	MAJOR BRIDGE (20' TO 300' SPAN)	PUBLIC ACCESS POINT	PUBLIC ACCESS POINT	PUBLIC ACCESS POINT	MN STATE COLLEGE AND UNIVERSITY SYSTEM (MNSCU)
	MINOR BRIDGE (5' TO 20' SPAN)	MN STATE COLLEGE AND UNIVERSITY SYSTEM (MNSCU)	MN STATE COLLEGE AND UNIVERSITY SYSTEM (MNSCU)	MN STATE COLLEGE AND UNIVERSITY SYSTEM (MNSCU)	UNIVERSITY OF MN SYSTEM
	LOCK AND DAM	UNIVERSITY OF MN SYSTEM	UNIVERSITY OF MN SYSTEM	UNIVERSITY OF MN SYSTEM	FAIRGROUNDS
	STATE CAPITAL	FAIRGROUNDS	FAIRGROUNDS	FAIRGROUNDS	CULTURAL FEATURES
	COUNTY SEAT	STATE HISTORICAL MARKER	STATE HISTORICAL MARKER	STATE HISTORICAL MARKER	HISTORIC DISTRICT
	CITY CENTER	HISTORIC DISTRICT	HISTORIC DISTRICT	HISTORIC DISTRICT	HISTORIC SITE
	CITY CENTER	HISTORIC SITE	HISTORIC SITE	HISTORIC SITE	MONUMENT
	CITY CENTER	MONUMENT	MONUMENT	MONUMENT	



Population (U.S. Census 2010): 23



To request information from this document in an alternative format, call 651-366-4718 or 1-800-657-3774 (Greater Minnesota); 711 or 1-800-627-3529 (Minnesota Relay). You may also send an e-mail to ADArequest.dot@state.mn.us. (Please request at least one week in advance.)