

# TOWNSHIP OF FORK

PREPARED BY THE  
MINNESOTA DEPARTMENT OF TRANSPORTATION  
OFFICE OF TRANSPORTATION SYSTEM MANAGEMENT

IN COOPERATION WITH  
U.S. DEPARTMENT OF TRANSPORTATION  
FEDERAL HIGHWAY ADMINISTRATION

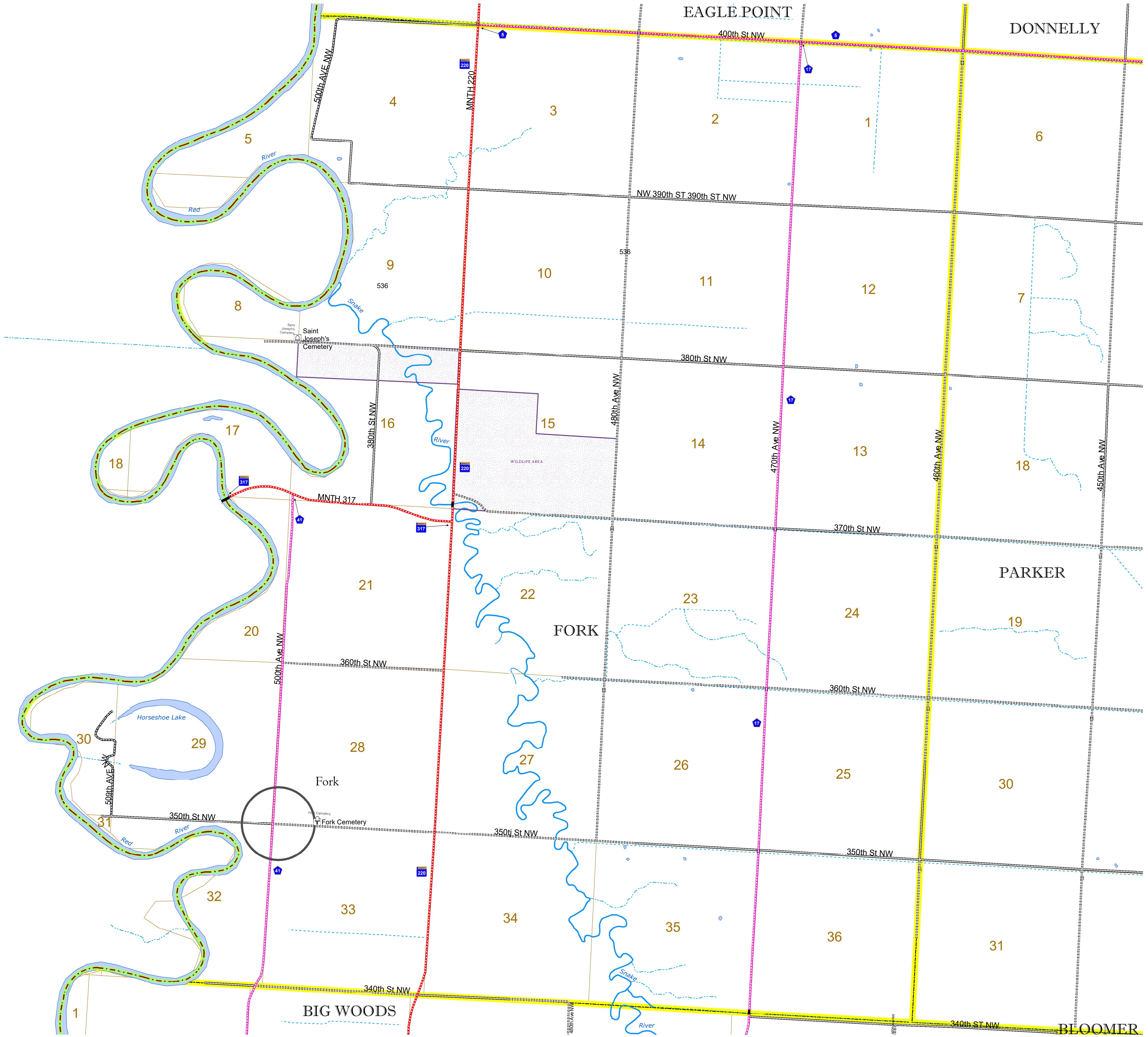


1 in = 1,600 ft  
**2022**

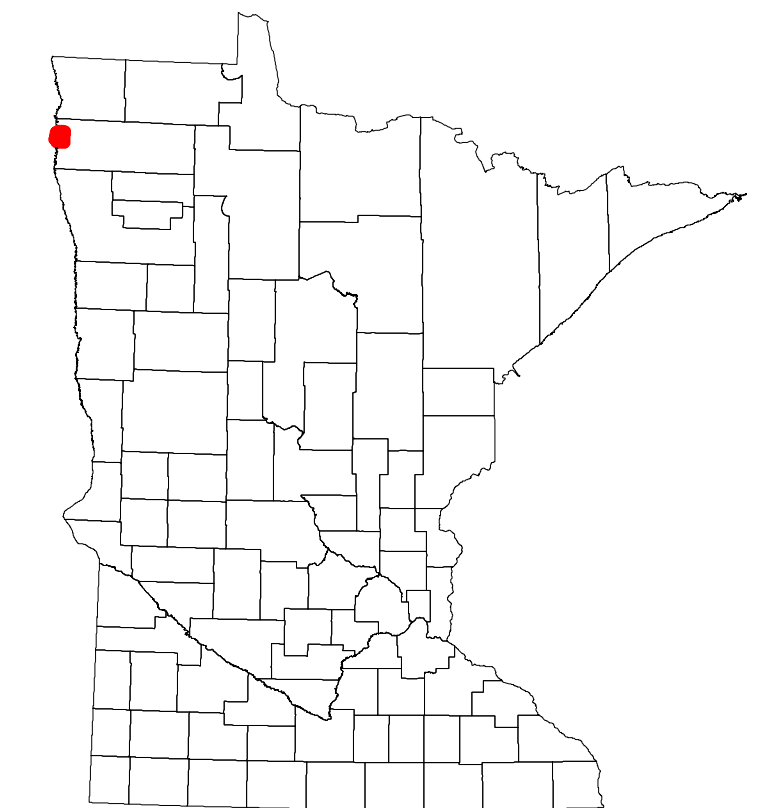
Projection:  
Transverse Mercator  
NAD 1986  
UTM Zone 15



North American Datum  
of 1986



ROAD AND ROADWAY FEATURES		AVIATION FEATURES	
INTERSTATE	CONCRETE	COMMERCIAL AIRPORT	GENERAL AIRPORT
US HIGHWAY	BITUMINOUS	NORTHSTAR STATION (COMMUTER)	AIRSTRIP
MN HIGHWAY	GRAVEL	SEAPLANE	AIRPORT RUNWAY
COUNTY STATE AID HIGHWAY	DIRT/UNIMPROVED	RAILROAD AND RAILWAY FEATURES	BOUNDARY FEATURES
COUNTY ROAD	OTHER	EMPIRE BUILDER STATION (AMTRAK)	TRIBAL LAND
TOWNSHIP ROAD	UNKNOWN	STATE OF MINNESOTA	COUNTY
UNORGANIZED TERRITORY ROAD		CITY CENTER	MUNICIPALITY
OTHER ROADS		CITY CENTER	UNINCORPORATED COMMUNITY
Municipal		STATE CAPITAL	CITY CENTER
Private		COUNTY SEAT	CITY CENTER
National Monument		CITY CENTER	CITY CENTER
State Forest		CITY CENTER	CITY CENTER
National Wildlife Refuge		CITY CENTER	CITY CENTER
State Game		CITY CENTER	CITY CENTER
State Park		CITY CENTER	CITY CENTER
Preserve		CITY CENTER	CITY CENTER
RAILROAD AND RAILWAY FEATURES		CITY CENTER	CITY CENTER
EMPIRE BUILDER STATION (AMTRAK)		CITY CENTER	CITY CENTER
NORTHSTAR STATION (COMMUTER)		CITY CENTER	CITY CENTER
SEAPLANE		CITY CENTER	CITY CENTER
AIRPORT RUNWAY		CITY CENTER	CITY CENTER
TRIBAL LAND		CITY CENTER	CITY CENTER
STATE OF MINNESOTA		CITY CENTER	CITY CENTER
COUNTY		CITY CENTER	CITY CENTER
MUNICIPALITY		CITY CENTER	CITY CENTER
UNINCORPORATED COMMUNITY		CITY CENTER	CITY CENTER
FEDERAL ADJUSTED URBAN AREA (2014)		CITY CENTER	CITY CENTER
CIVIL TOWNSHIP		CITY CENTER	CITY CENTER
CONGRESSIONAL TOWNSHIP		CITY CENTER	CITY CENTER
SECTION		CITY CENTER	CITY CENTER
MILITARY		CITY CENTER	CITY CENTER
VOYAGEURS NATIONAL PARK		CITY CENTER	CITY CENTER
BOUNDARY WATERS CANOE AREA WILDERNESS		CITY CENTER	CITY CENTER
STATE PARK		CITY CENTER	CITY CENTER
REGIONAL PARK		CITY CENTER	CITY CENTER
NATIONAL FOREST		CITY CENTER	CITY CENTER
NATIONAL AND STATE FOREST		CITY CENTER	CITY CENTER
STATE FOREST		CITY CENTER	CITY CENTER
NATIONAL TRAIL		CITY CENTER	CITY CENTER
WILDLIFE REFUGUE AREA		CITY CENTER	CITY CENTER
WILDLIFE MANAGEMENT AREA		CITY CENTER	CITY CENTER
HYDROLOGIC FEATURES		CITY CENTER	CITY CENTER
RIVER OR STREAM (PERENNIAL)		CITY CENTER	CITY CENTER
LAKE, POND OR RESERVOIR		CITY CENTER	CITY CENTER
STREAM (INTERMITTENT)		CITY CENTER	CITY CENTER
DRAINAGE DITCH		CITY CENTER	CITY CENTER
WETLAND		CITY CENTER	CITY CENTER
ISLAND OR LAND		CITY CENTER	CITY CENTER
REGIONAL WATERSHED		CITY CENTER	CITY CENTER
CULTURAL FEATURES		CITY CENTER	CITY CENTER
STATE HISTORICAL MARKER		CITY CENTER	CITY CENTER
HISTORIC DISTRICT		CITY CENTER	CITY CENTER
HISTORIC SITE		CITY CENTER	CITY CENTER
MONUMENT		CITY CENTER	CITY CENTER



Population (U.S. Census 2010): 10

To request information from this document in an alternative format, call 651-366-4718 or 1-800-657-3774 (Greater Minnesota); 711 or 1-800-627-3529 (Minnesota Relay). You may also send an e-mail to ADAREquest.dot@state.mn.us. (Please request at least one week in advance.)