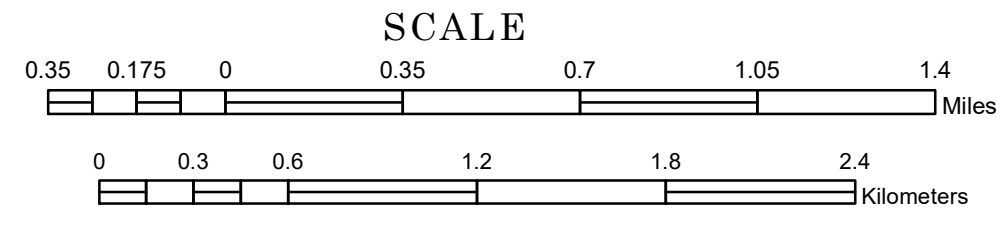


TOWNSHIP OF GRAND PLAIN

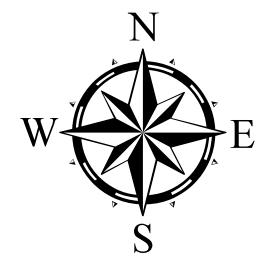
PREPARED BY THE
MINNESOTA DEPARTMENT OF TRANSPORTATION
OFFICE OF TRANSPORTATION SYSTEM MANAGEMENT

IN COOPERATION WITH
U.S. DEPARTMENT OF TRANSPORTATION
FEDERAL HIGHWAY ADMINISTRATION

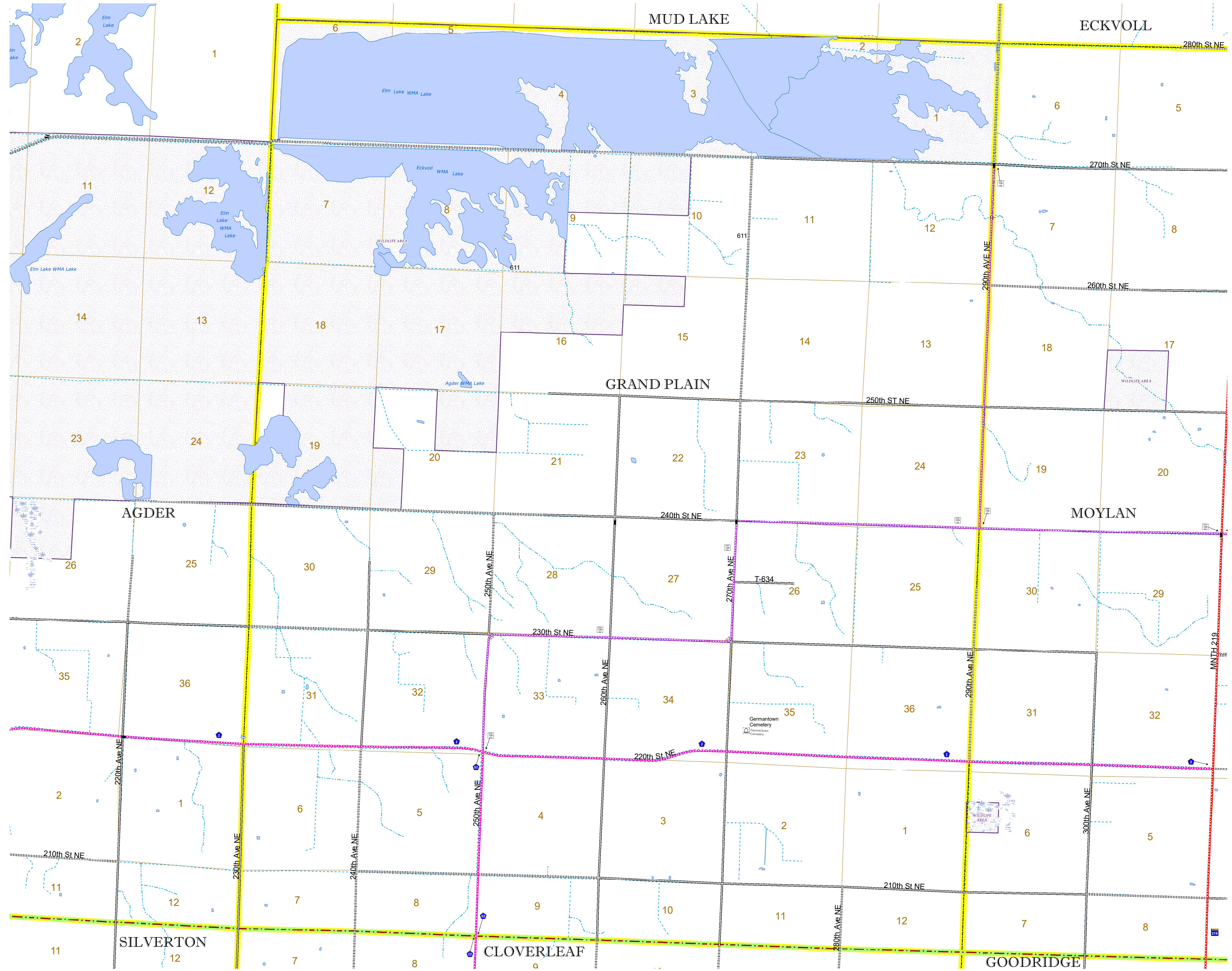


1 in = 2,000 ft
2022

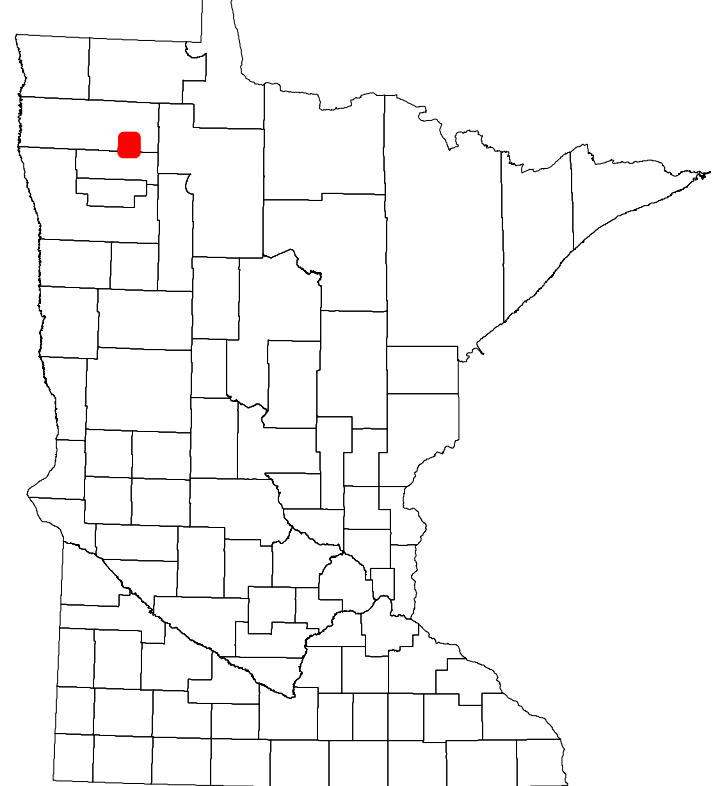
Projection:
Transverse Mercator
NAD 1986
UTM Zone 15



North American Datum
of 1986



ROAD AND ROADWAY FEATURES		BOUNDARY FEATURES	
INTERSTATE	CONCRETE	TRIBAL LAND	TRIBAL LAND
US HIGHWAY	BITUMINOUS	STATE OF MINNESOTA	STATE OF MINNESOTA
MN HIGHWAY	GRAVEL	COUNTY	COUNTY
COUNTY STATE AID HIGHWAY	DIRT/UNIMPROVED	MUNICIPALITY	MUNICIPALITY
COUNTY ROAD	OTHER	UNORGANIZED TERRITORY	UNORGANIZED TERRITORY
TOWNSHIP ROAD	UNKNOWN	FEDERAL ADJUSTED URBAN AREA (2014)	FEDERAL ADJUSTED URBAN AREA (2014)
UNORGANIZED TERRITORY ROAD		CIVIL TOWNSHIP	CIVIL TOWNSHIP
OTHER ROADS		CONGRESSIONAL TOWNSHIP	CONGRESSIONAL TOWNSHIP
Municipal	RAMP OR CONNECTOR	SECTION	SECTION
Private	INTERSTATE EXIT	MILITARY	MILITARY
Nature Service	AVIATION FEATURES	VOYAGEUR'S NATIONAL PARK	VOYAGEUR'S NATIONAL PARK
Mulroy	COMMERCIAL AIRPORT	BOUNDARY WATERS CANOE AREA WILDERNESS	BOUNDARY WATERS CANOE AREA WILDERNESS
National Monument	GENERAL AIRPORT	STATE PARK	STATE PARK
National Wildlife	AIRSTRIP	REGIONAL PARK	REGIONAL PARK
State Game	SEAPLANE	NATIONAL FOREST	NATIONAL FOREST
State Park	AIRPORT RUNWAY	NATIONAL AND STATE FOREST	NATIONAL AND STATE FOREST
Preserve	AVIATION FEATURES	STATE FOREST	STATE FOREST
	GENERAL AIRPORT	NATIONAL TRAIL	NATIONAL TRAIL
	COMMERCIAL AIRPORT	WILDLIFE REFUGUE AREA	WILDLIFE REFUGUE AREA
	GENERAL AIRPORT	WILDLIFE MANAGEMENT AREA	WILDLIFE MANAGEMENT AREA
	AIRSTRIP	HYDROLOGIC FEATURES	HYDROLOGIC FEATURES
	SEAPLANE	RIVER OR STREAM (PERENNIAL)	RIVER OR STREAM (PERENNIAL)
	AIRPORT RUNWAY	LAKE, POND OR RESERVOIR	LAKE, POND OR RESERVOIR
	BOUNDARY FEATURES	STREAM (INTERMITTENT)	STREAM (INTERMITTENT)
	TRIBAL LAND	DRAINAGE DITCH	DRAINAGE DITCH
	STATE OF MINNESOTA	WETLAND	WETLAND
	COUNTY	ISLAND OR LAND	ISLAND OR LAND
	MUNICIPALITY	REGIONAL WATERSHED	REGIONAL WATERSHED
	UNORGANIZED TERRITORY		
	FEDERAL ADJUSTED URBAN AREA (2014)		
	CIVIL TOWNSHIP		
	CONGRESSIONAL TOWNSHIP		
	SECTION		
	MILITARY		
	VOYAGEUR'S NATIONAL PARK		
	BOUNDARY WATERS CANOE AREA WILDERNESS		
	STATE PARK		
	REGIONAL PARK		
	NATIONAL FOREST		
	NATIONAL AND STATE FOREST		
	STATE FOREST		
	NATIONAL TRAIL		
	WILDLIFE REFUGUE AREA		
	WILDLIFE MANAGEMENT AREA		
	HYDROLOGIC FEATURES		
	RIVER OR STREAM (PERENNIAL)		
	LAKE, POND OR RESERVOIR		
	STREAM (INTERMITTENT)		
	DRAINAGE DITCH		
	WETLAND		
	ISLAND OR LAND		
	REGIONAL WATERSHED		



Population (U.S. Census 2010): 55

To request information from this document in an alternative format, call 651-366-4718 or 1-800-657-3774 (Greater Minnesota); 711 or 1-800-627-3529 (Minnesota Relay). You may also send an e-mail to ADAREquest.dot@state.mn.us. (Please request at least one week in advance.)