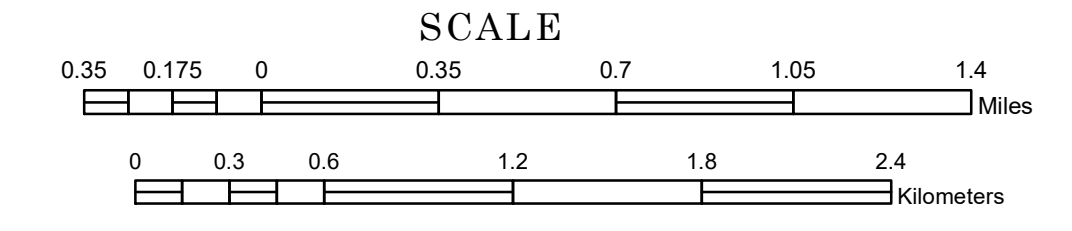


# TOWNSHIP OF VEGA

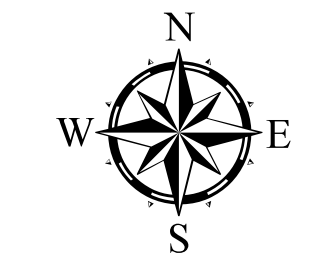
PREPARED BY THE  
MINNESOTA DEPARTMENT OF TRANSPORTATION  
OFFICE OF TRANSPORTATION SYSTEM MANAGEMENT

IN COOPERATION WITH  
U.S. DEPARTMENT OF TRANSPORTATION  
FEDERAL HIGHWAY ADMINISTRATION

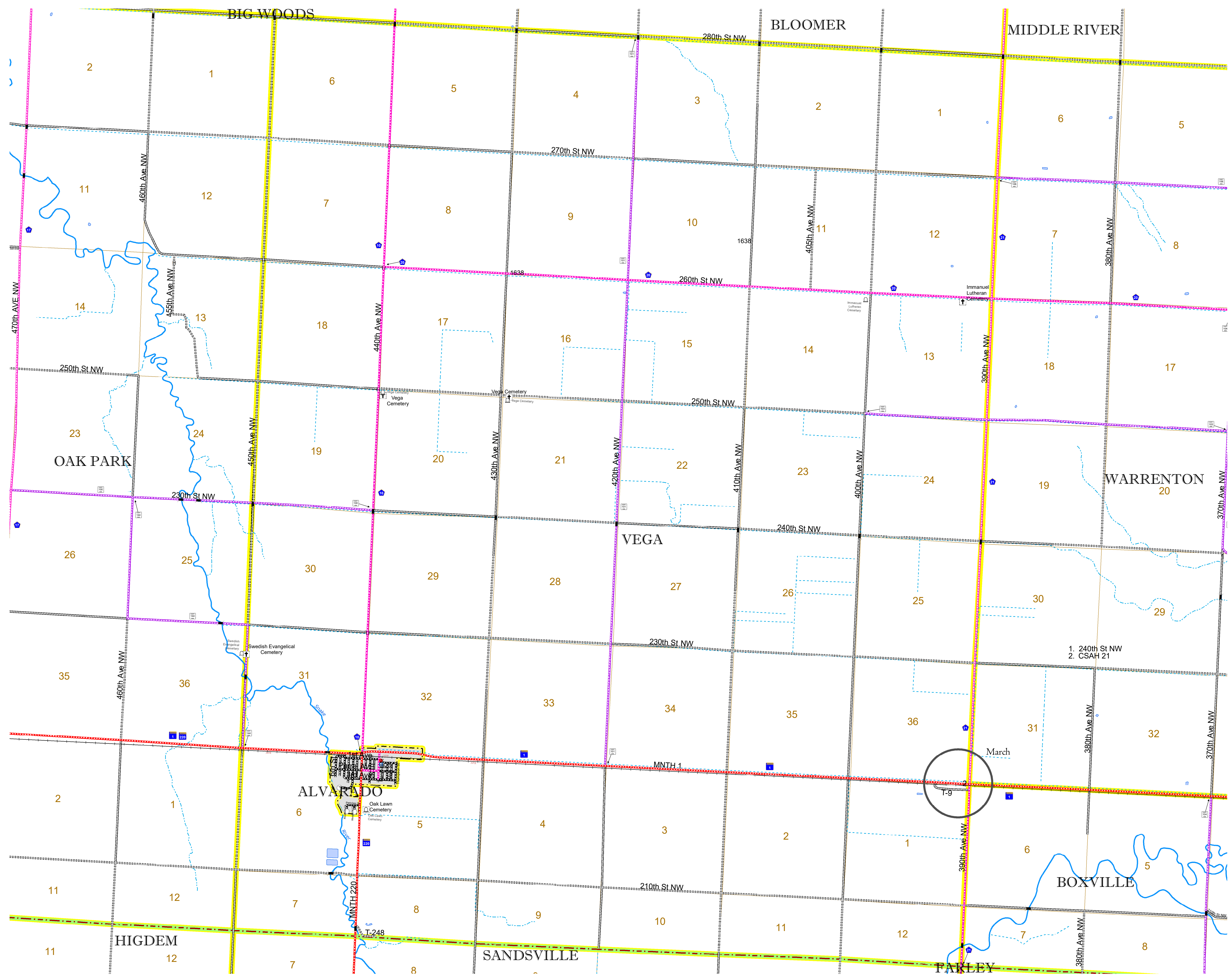


1 in = 2,000 ft  
**2022**

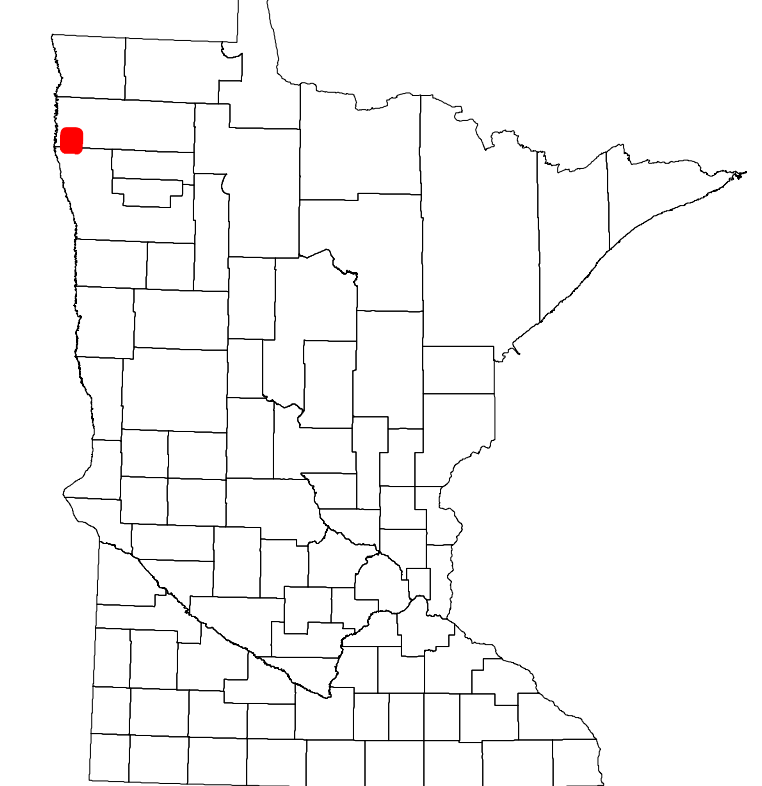
Projection:  
Transverse Mercator  
NAD 1986  
UTM Zone 15



North American Datum  
of 1986



ROAD AND ROADWAY FEATURES		RAILROAD AND RAILWAY FEATURES		AVIATION FEATURES	
INTERSTATE	CONCRETE	RAILROAD	COMMERCIAL AIRPORT	GENERAL AIRPORT	BOUNDARY FEATURES
US HIGHWAY	BITUMINOUS	EMPIRE BUILDER STATION (AMTRAK)	GENERAL AIRPORT	AIRSTRIP	TRIBAL LAND
MN HIGHWAY	GRAVEL	NORTHSTAR STATION (COMPUTER)	AIRSTRIP	SEAPLANE	STATE OF MINNESOTA
COUNTY STATE AID HIGHWAY	DIRT/UNIMPROVED	LIGHT RAIL	SEAPLANE	AIRPORT RUNWAY	COUNTY
COUNTY ROAD	OTHER	BLUE LINE	AIRPORT RUNWAY	BOUNDARY FEATURES	MUNICIPALITY
TOWNSHIP ROAD	UNKNOWN	GREEN LINE	BOUNDARY FEATURES	BOUNDARY FEATURES	UNINCORPORATED TOWNSHIP
UNORGANIZED TERRITORY ROAD					FEDERAL ADJUSTED URBAN AREA (2014)
OTHER ROADS					CIVIL TOWNSHIP
Municipal					CONGRESSIONAL TOWNSHIP
Private					SECTION
National Monument					MILITARY
National Wildlife					VOYAGEURS NATIONAL PARK
State Park					BOUNDARY WATERS CANOE AREA WILDERNESS
Preserve					STATE PARK
					REGIONAL PARK
					NATIONAL FOREST
					NATIONAL AND STATE FOREST
					STATE FOREST
					WILDLIFE REFUGUE AREA
					WILDLIFE MANAGEMENT AREA
					HYDROLOGIC FEATURES
					RIVER OR STREAM (PERMANENT)
					LAKE, POND OR RESERVOIR
					STREAM (INTERMITTENT)
					DRAINAGE DITCH
					WETLAND
					ISLAND OR LAND
					REGIONAL WATERSHED



Population (U.S. Census 2010): 125

To request information from this document in an alternative format, call 651-366-4718 or 1-800-657-3774 (Greater Minnesota); 711 or 1-800-627-3529 (Minnesota Relay). You may also send an e-mail to ADAREquest.dot@state.mn.us. (Please request at least one week in advance.)