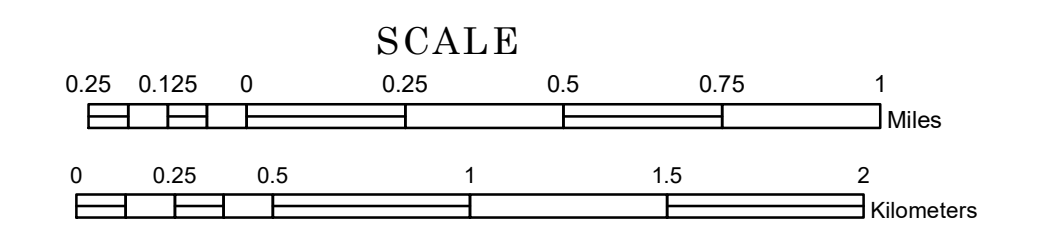


TOWNSHIP OF SILVER LAKE

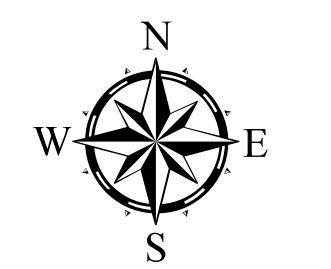
PREPARED BY THE
MINNESOTA DEPARTMENT OF TRANSPORTATION
OFFICE OF TRANSPORTATION SYSTEM MANAGEMENT

IN COOPERATION WITH
U.S. DEPARTMENT OF TRANSPORTATION
FEDERAL HIGHWAY ADMINISTRATION



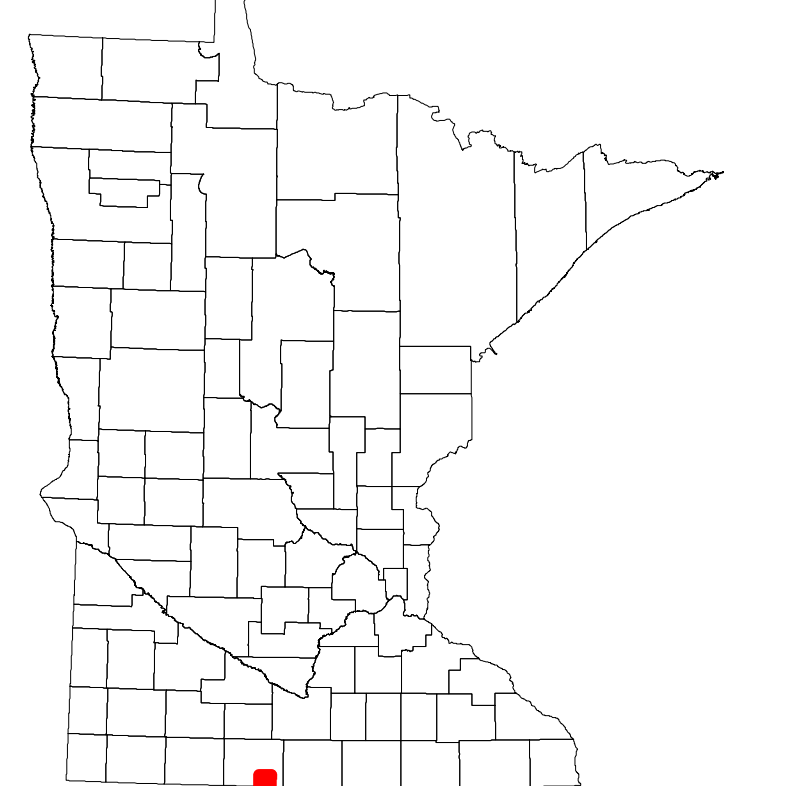
2022

Projection:
Transverse Mercator
NAD 1986
UTM Zone 15

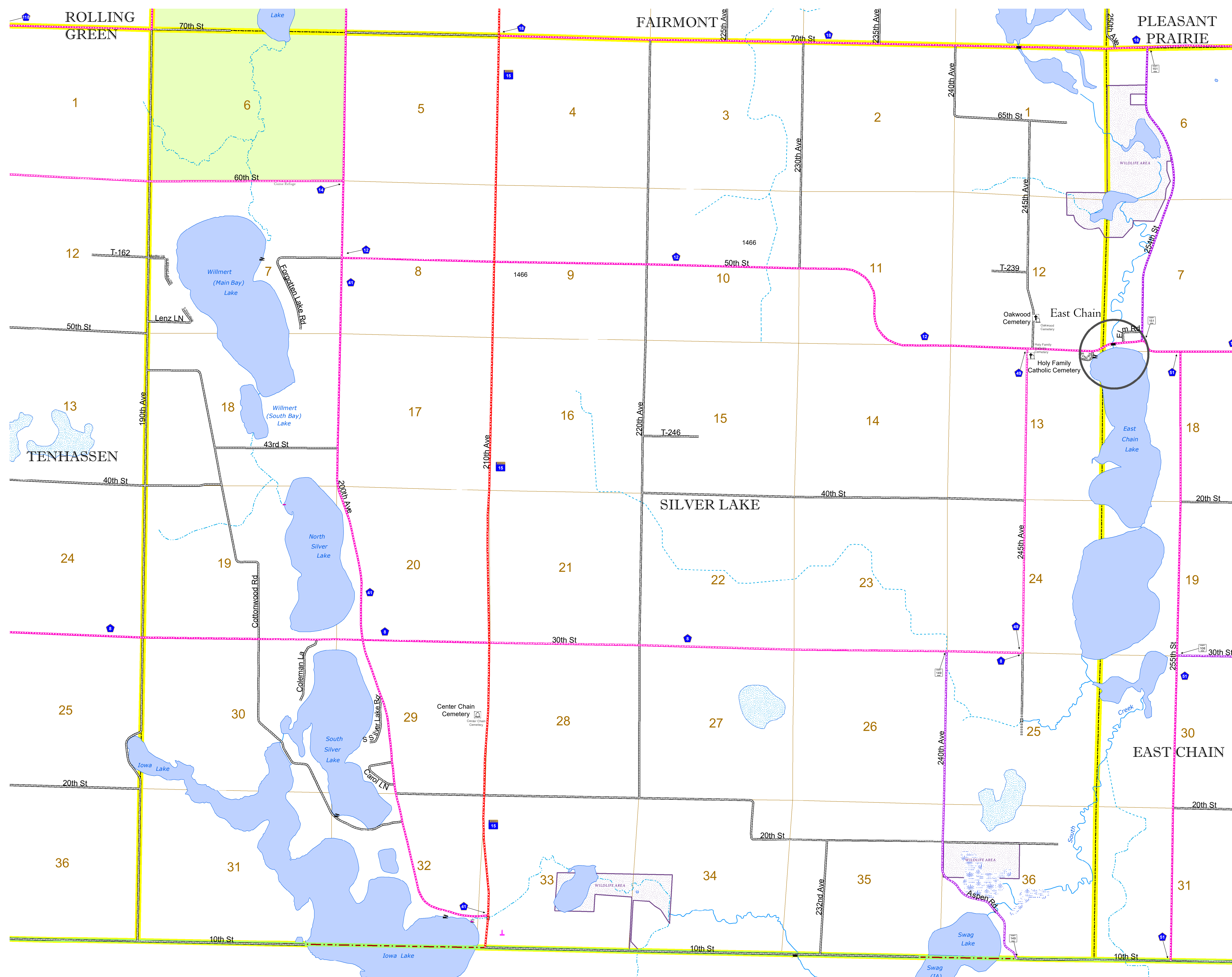


North American Datum
of 1986

ROAD AND ROADWAY FEATURES			
INTERSTATE	CONCRETE		
US HIGHWAY	BITUMINOUS		
MN HIGHWAY	GRAVEL		
COUNTY STATE AID HIGHWAY	DIRT/UNIMPROVED		
COUNTY ROAD	OTHER		
TOWNSHIP ROAD	UNKNOWN		
UNORGANIZED TERRITORY ROAD			
OTHER ROADS	RAMP OR CONNECTOR		
Municipal	Private	National Monument	State Forest
Nature Service	National Park	National Wildlife	State Game
Military	National Forest	State Park	Preserve
RAILROAD AND RAILWAY FEATURES			
EMPIRE BUILDER STATION (AMTRAK)	COMMERCIAL AIRPORT		
NORTHSTAR STATION (COMMUTER)	GENERAL AIRPORT		
	AIRSTRIP		
LIGHT RAIL	SEAPLANE		
BLUE LINE	AIRPORT RUNWAY		
GREEN LINE			
INFRASTRUCTURE FEATURES			
LONG BRIDGE (200' OR GREATER SPAN)	TRIAL LAND		
MAJOR BRIDGE (20' TO 200' SPAN)	STATE OF MINNESOTA		
MINOR BRIDGE (5' TO 20' SPAN)	COUNTY		
DAM	MUNICIPALITY		
LOCK AND DAM	UNORGANIZED TERRITORY		
	FEDERAL ADJUSTED URBAN AREA (2014)		
	CIVIL TOWNSHIP		
STATE CAPITAL	CITY CENTER	UNINCORPORATED COMMUNITY	
	CITY CENTER		
PUBLIC SERVICE FEATURES			
MNDOT OFFICE	MILITARY		
MNDOT TRUCK STATION	VOYAGEURS NATIONAL PARK		
HIGHWAY PATROL DISTRICT OFFICE	BOUNDARY WATERS CANOE AREA WILDERNESS		
STATE TRAVEL INFORMATION CENTER	STATE PARK		
REST AREA (FULL SERVICE)	REGIONAL PARK		
REST AREA (VAULT TOILET)	NATIONAL FOREST		
WAYSIDE (VAULT OR PITY TOILET)	NATIONAL AND STATE FOREST		
PARK AND RIDE LOT	STATE FOREST		
PORT OF ENTRY	NATIONAL TRAIL		
PUBLIC ACCESS POINT	WILDLIFE REFUGUE AREA		
MN STATE COLLEGE AND UNIVERSITY SYSTEM (MNSCU)	WILDLIFE MANAGEMENT AREA		
UNIVERSITY OF MN SYSTEM	HYDROLOGIC FEATURES		
FAIRGROUNDS	RIVER OR STREAM (PERENNIAL)		
	LAKE, POND OR RESERVOIR		
	STREAM (INTERMITTENT)		
CULTURAL FEATURES			
STATE HISTORICAL MARKER	DRAINAGE DITCH		
HISTORIC DISTRICT	WETLAND		
HISTORIC SITE	ISLAND OR LAND		
MONUMENT	REGIONAL WATERSHED		



Population (U.S. Census 2010): 519



To request information from this document in an alternative format, call 651-366-4718 or 1-800-657-3774 (Greater Minnesota); 711 or 1-800-627-3529 (Minnesota Relay). You may also send an e-mail to ADarequest.dot@state.mn.us. (Please request at least one week in advance.)