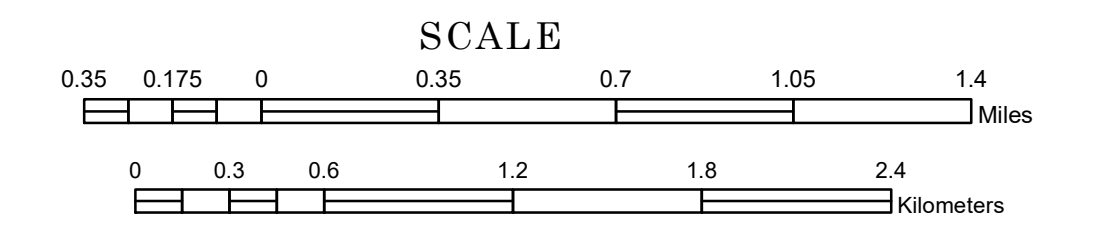


TOWNSHIP OF LAFAYETTE

PREPARED BY THE
MINNESOTA DEPARTMENT OF TRANSPORTATION
OFFICE OF TRANSPORTATION SYSTEM MANAGEMENT

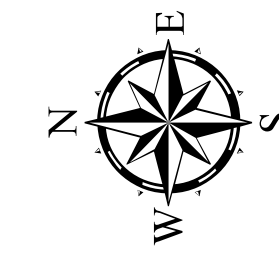
IN COOPERATION WITH
U.S. DEPARTMENT OF TRANSPORTATION
FEDERAL HIGHWAY ADMINISTRATION



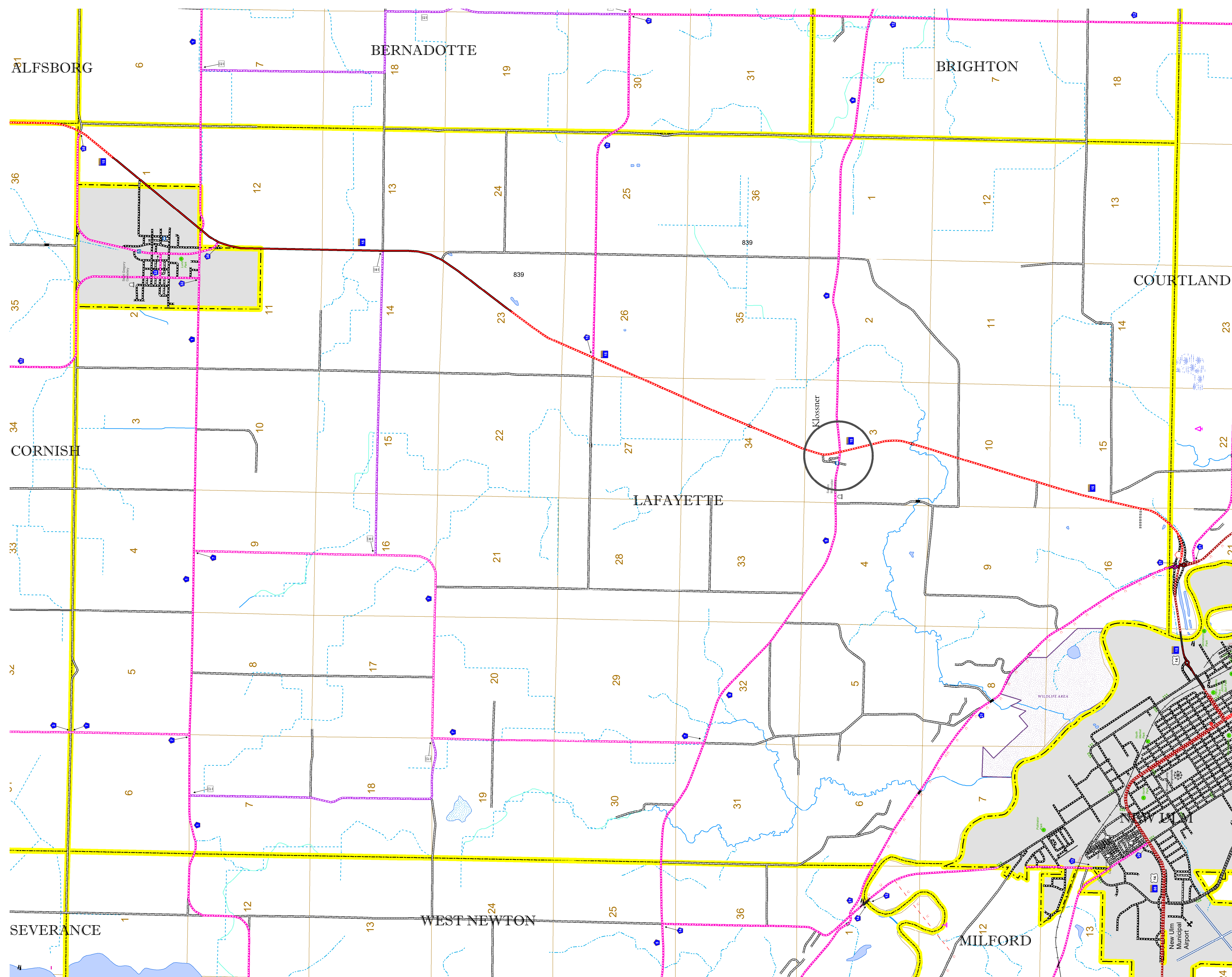
1 in = 2,000 ft

2022

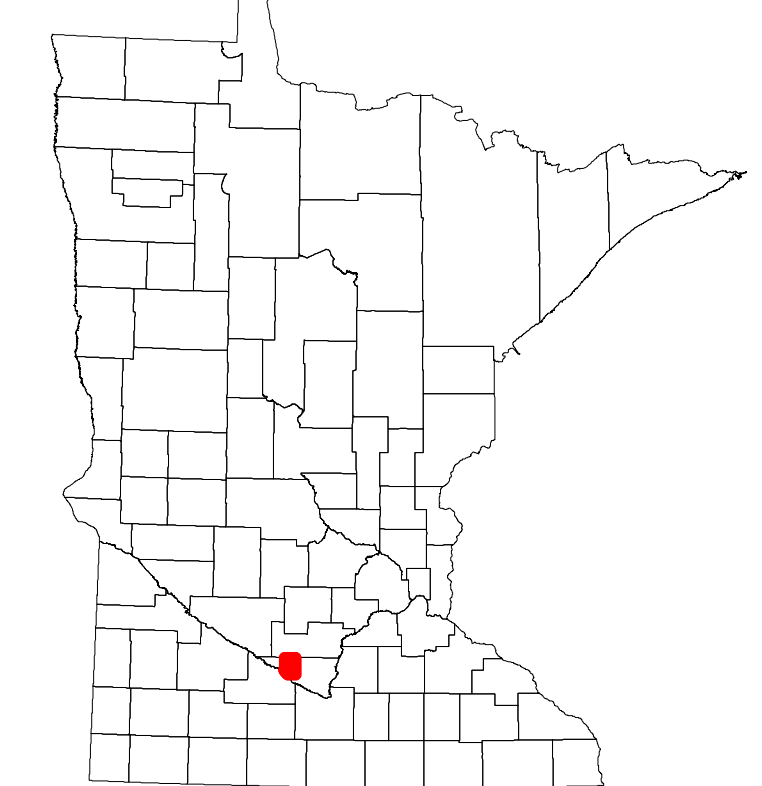
Projection:
Transverse Mercator
NAD 1986
UTM Zone 15



North American Datum
of 1986



ROAD AND ROADWAY FEATURES		RAILROAD AND RAILWAY FEATURES		AVIATION FEATURES		BOUNDARY FEATURES	
INTERSTATE	CONCRETE	EMPIRE BUILDER STATION (AMTRAK)	COMMERCIAL AIRPORT	TRIBAL LAND	STATE OF MINNESOTA	COUNTY	MUNICIPALITY
US HIGHWAY	BITUMINOUS	NORTHSTAR STATION (COMMUTER)	GENERAL AIRPORT	STATE OF MINNESOTA	COUNTY	MUNICIPALITY	UNORGANIZED TERRITORY
MN HIGHWAY	GRAVEL	LIGHT RAIL	AIRSTRIP	LONG BRIDGE (200' OR GREATER SPAN)	STATE OF MINNESOTA	COUNTY	FEDERAL ADJUSTED URBAN AREA (2014)
COUNTY STATE AID HIGHWAY	DIRT/UNIMPROVED	BLUE LINE	SEAPLANE	MAJOR BRIDGE (20' TO 200' SPAN)	STATE OF MINNESOTA	COUNTY	CIVIL TOWNSHIP
COUNTY ROAD	OTHER	GREEN LINE	AIRPORT RUNWAY	MINOR BRIDGE (5' TO 20' SPAN)	STATE OF MINNESOTA	COUNTY	CONGRESSIONAL TOWNSHIP
TOWNSHIP ROAD	UNKNOWN	INFRASTRUCTURE FEATURES	RAILROAD AND RAILWAY FEATURES	DAM	STATE OF MINNESOTA	COUNTY	SECTION
UNORGANIZED TERRITORY ROAD		LONG BRIDGE (200' OR GREATER SPAN)	EMPIRE BUILDER STATION (AMTRAK)	LOCK AND DAM	STATE OF MINNESOTA	COUNTY	MILITARY
OTHER ROADS		MAJOR BRIDGE (20' TO 200' SPAN)	NORTHSTAR STATION (COMMUTER)		STATE OF MINNESOTA	COUNTY	VOYAGEURS NATIONAL PARK
Municipal		MINOR BRIDGE (5' TO 20' SPAN)	LIGHT RAIL		STATE OF MINNESOTA	COUNTY	BOUNDARY WATERS CANOE AREA WILDERNESS
Private		DAM	BLUE LINE		STATE OF MINNESOTA	COUNTY	STATE PARK
National Monument			GREEN LINE		STATE OF MINNESOTA	COUNTY	REGIONAL PARK
National Wildlife Refuge			INFRASTRUCTURE FEATURES		STATE OF MINNESOTA	COUNTY	NATIONAL FOREST
State Game Preserve			LONG BRIDGE (200' OR GREATER SPAN)		STATE OF MINNESOTA	COUNTY	NATIONAL AND STATE FOREST
			MAJOR BRIDGE (20' TO 200' SPAN)		STATE OF MINNESOTA	COUNTY	STATE FOREST
			MINOR BRIDGE (5' TO 20' SPAN)		STATE OF MINNESOTA	COUNTY	WILDLIFE REFUGE AREA
			DAM		STATE OF MINNESOTA	COUNTY	WILDLIFE MANAGEMENT AREA
			LOCK AND DAM		STATE OF MINNESOTA	COUNTY	HYDROLOGIC FEATURES
					STATE OF MINNESOTA	COUNTY	RIVER OR STREAM (PERENNIAL)
					STATE OF MINNESOTA	COUNTY	LAKE, POND OR RESERVOIR
					STATE OF MINNESOTA	COUNTY	STREAM (INTERMITTENT)
					STATE OF MINNESOTA	COUNTY	DRAINAGE DITCH
					STATE OF MINNESOTA	COUNTY	WETLAND
					STATE OF MINNESOTA	COUNTY	ISLAND OR LAND
					STATE OF MINNESOTA	COUNTY	REGIONAL WATERSHED
					STATE OF MINNESOTA	COUNTY	



Population (U.S. Census 2010): 694

To request information from this document in an alternative format, call 651-366-4718 or 1-800-657-3774 (Greater Minnesota); 711 or 1-800-627-3529 (Minnesota Relay). You may also send an e-mail to ADArequest.dot@state.mn.us. (Please request at least one week in advance.)