

TOWNSHIP OF HOME LAKE

PREPARED BY THE
MINNESOTA DEPARTMENT OF TRANSPORTATION
OFFICE OF TRANSPORTATION SYSTEM MANAGEMENT

IN COOPERATION WITH
U.S. DEPARTMENT OF TRANSPORTATION
FEDERAL HIGHWAY ADMINISTRATION



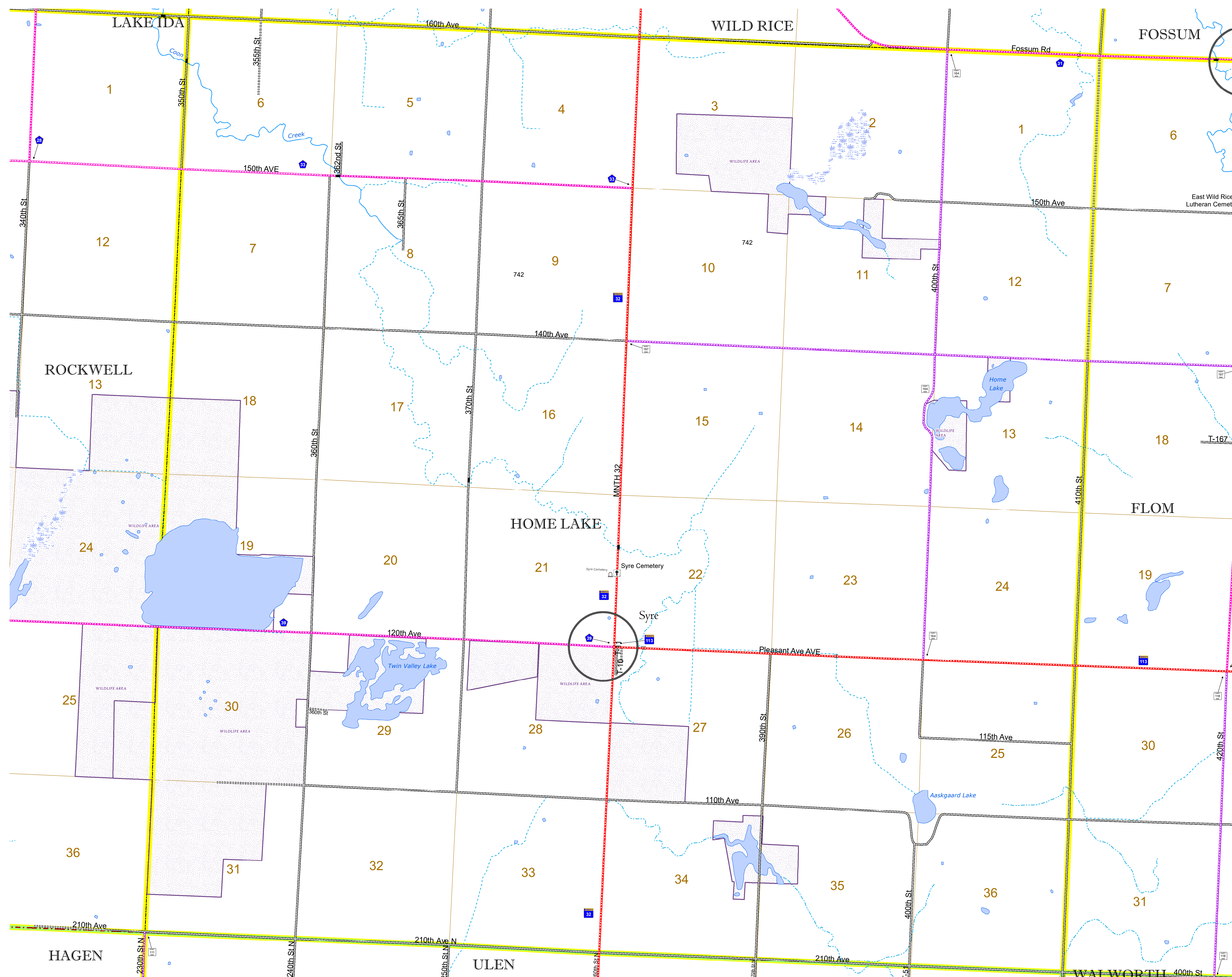
1 in = 1,600 ft

2022

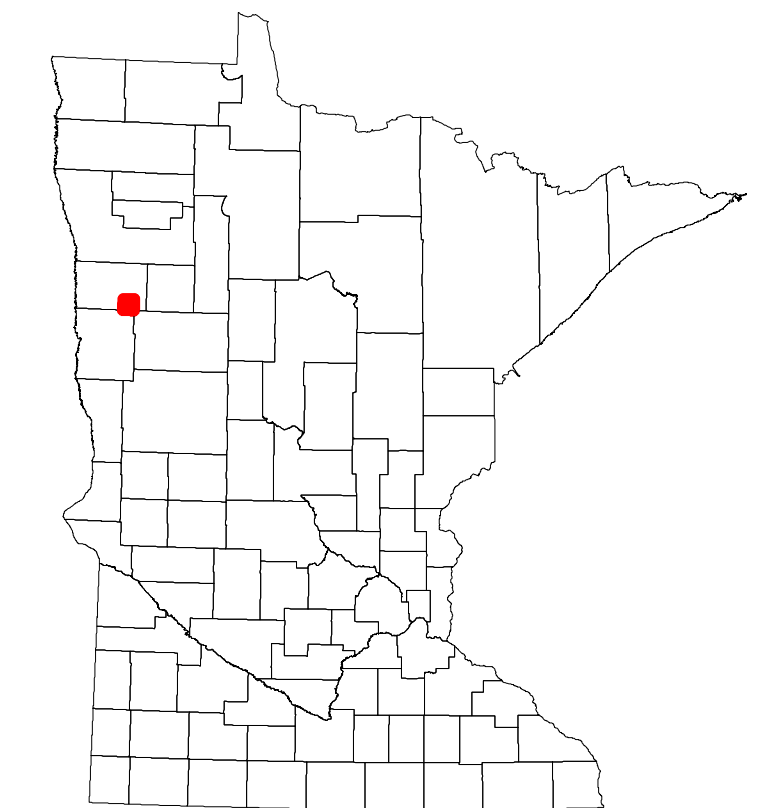
Projection:
Transverse Mercator
NAD 1986
UTM Zone 15



North American Datum
of 1986



ROAD AND ROADWAY FEATURES		AVIATION FEATURES	
INTERSTATE	CONCRETE	COMMERCIAL AIRPORT	GENERAL AIRPORT
US HIGHWAY	BITUMINOUS	AIRSTRIP	SEAPLANE
MN HIGHWAY	GRAVEL	AIRPORT RUNWAY	BOUNDARY FEATURES
COUNTY STATE AID HIGHWAY	DIRT/UNIMPROVED	TRIAL LAND	STATE OF MINNESOTA
COUNTY ROAD	OTHER	MUNICIPALITY	COUNTY
TOWNSHIP ROAD	UNKNOWN	UNINCORPORATED COMMUNITY	MUNICIPALITY
UNORGANIZED TERRITORY ROAD		CIVIL TOWNSHIP	UNINCORPORATED COMMUNITY
OTHER ROADS		FEDERAL ADJUSTED URBAN AREA (2014)	CIVIL TOWNSHIP
Municipal		CONGRESSIONAL TOWNSHIP	CIVIL TOWNSHIP
Private		SECTION	MILITARY
National Monument		MILITARY	VOYAGEURS NATIONAL PARK
National Park		BOUNDARY NATURAL PARK	BOUNDARY NATURAL PARK
National Wildlife Refuge		STATE PARK	STATE PARK
State Park		NATIONAL FOREST	NATIONAL FOREST
Preserve		NATIONAL AND STATE FOREST	NATIONAL AND STATE FOREST
		STATE FOREST	STATE FOREST
		WILDLIFE REFUGUE AREA	WILDLIFE REFUGUE AREA
		WILDLIFE MANAGEMENT AREA	WILDLIFE MANAGEMENT AREA
		HYDROLOGIC FEATURES	HYDROLOGIC FEATURES
		RIVER OR STREAM (PERMANENT)	RIVER OR STREAM (PERMANENT)
		LAKE, POND OR RESERVOIR	LAKE, POND OR RESERVOIR
		STREAM (INTERMITTENT)	STREAM (INTERMITTENT)
		DRAINAGE DITCH	DRAINAGE DITCH
		WETLAND	WETLAND
		ISLAND OR LAND	ISLAND OR LAND
		REGIONAL WATERSHED	REGIONAL WATERSHED



Population (U.S. Census 2010): 148

To request information from this document in an alternative format, call 651-366-4718 or 1-800-657-3774 (Greater Minnesota); 711 or 1-800-627-3529 (Minnesota Relay). You may also send an e-mail to ADRequest.dot@state.mn.us. (Please request at least one week in advance.)