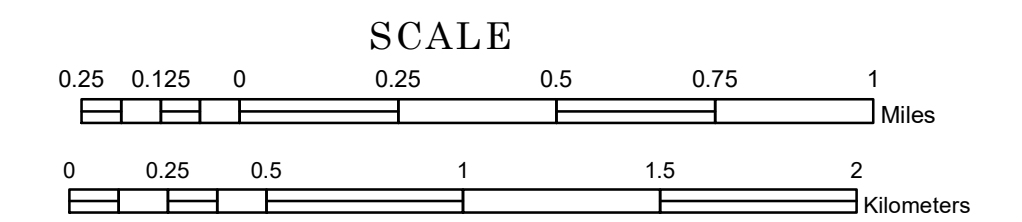


# TOWNSHIP OF MARY

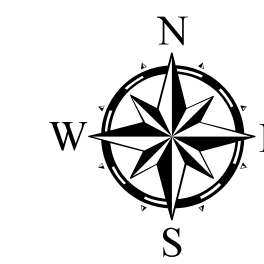
PREPARED BY THE  
MINNESOTA DEPARTMENT OF TRANSPORTATION  
OFFICE OF TRANSPORTATION SYSTEM MANAGEMENT

IN COOPERATION WITH  
U.S. DEPARTMENT OF TRANSPORTATION  
FEDERAL HIGHWAY ADMINISTRATION



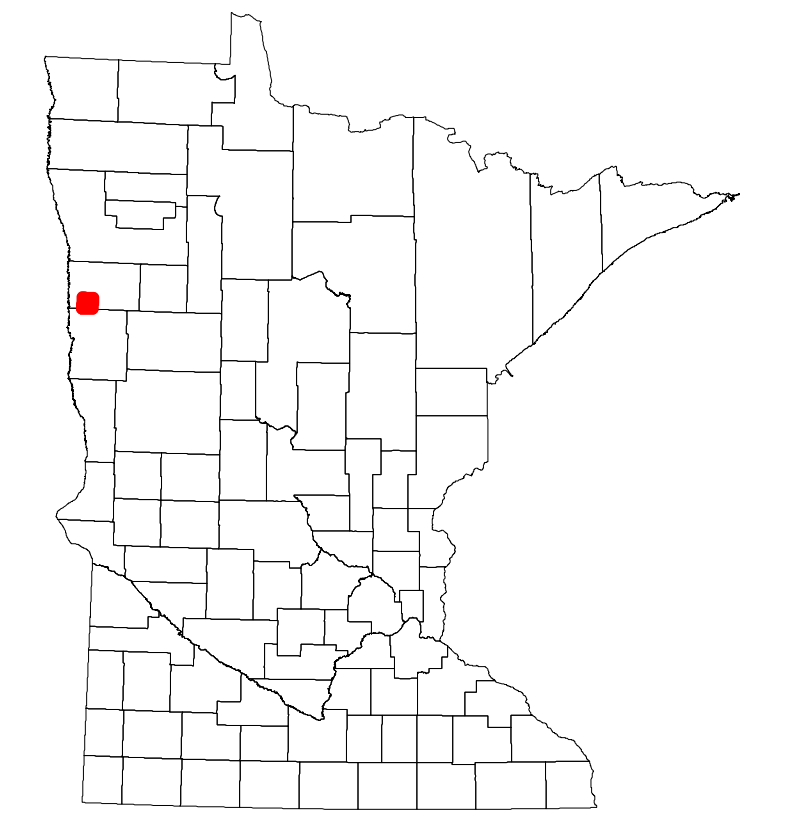
1 in = 1,600 ft  
**2022**

Projection:  
Transverse Mercator  
NAD 1986  
UTM Zone 15

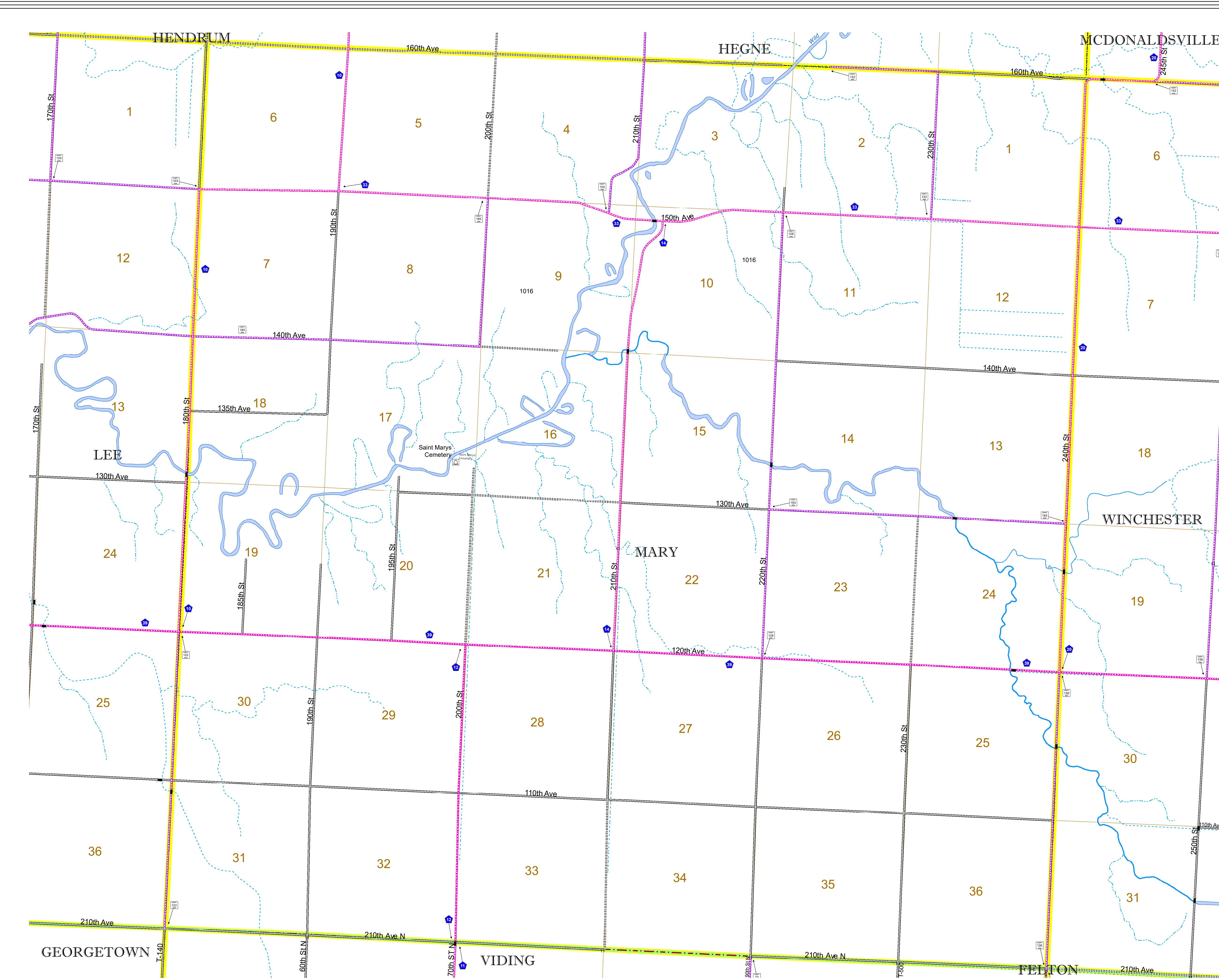


North American Datum  
of 1986

<b>ROAD AND ROADWAY FEATURES</b>				
INTERSTATE	CONCRETE			
US HIGHWAY	BITUMINOUS			
MN HIGHWAY	GRAVEL			
COUNTY STATE AID HIGHWAY	DIRT/UNIMPROVED			
COUNTY ROAD	OTHER			
TOWNSHIP ROAD	UNKNOWN			
UNORGANIZED TERRITORY ROAD				
OTHER ROADS:	RAMP OR CONNECTOR			
Municipal	Private	National Monument	State Forest	
Nature Service	National Park	National Wildlife	State Game	
Mulvan	National Forest	State Park	Preserve	
<b>RAILROAD AND RAILWAY FEATURES</b>				
EMPIRE BUILDER STATION (AMTRAK)	COMMERCIAL AIRPORT			
NORTHSTAR STATION (COMPUTER)	GENERAL AIRPORT			
LIGHT RAIL	AIRSTRIP			
BLUE LINE	SEAPLANE			
GREEN LINE	AIRPORT RUNWAY			
<b>INFRASTRUCTURE FEATURES</b>				
LONG BRIDGE (200' or Greater Span)	TRIAL LAND			
MAJOR BRIDGE (20' to 200' Span)	STATE OF MINNESOTA			
MINOR BRIDGE (5' to 20' Span)	COUNTY			
DAM	MUNICIPALITY			
LOCK AND DAM	UNORGANIZED TERRITORY			
<b>CITY CENTERS</b>				
STATE CAPITAL	CITY CENTER	UNINCORPORATED COMMUNITY		
<b>PUBLIC SERVICE FEATURES</b>				
MNDOT OFFICE	VOYAGEURS NATIONAL PARK			
MNDOT TRUCK STATION	BOUNDARY WATERS CANOE AREA WILDERNESS			
HIGHWAY PATROL DISTRICT OFFICE	STATE PARK			
STATE TRAVEL INFORMATION CENTER	REGIONAL PARK			
REST AREA (Full Service)	NATIONAL FOREST			
REST AREA (Vault Toilet)	NATIONAL AND STATE FOREST			
WAYSIDE (Vault or Pit Toilet)	STATE FOREST			
PARK AND RIDE LOT	WILDLIFE REFUGE AREA			
PORT OF ENTRY	WILDLIFE MANAGEMENT AREA			
PUBLIC ACCESS POINT	HYDROLOGIC FEATURES			
MN STATE COLLEGE AND UNIVERSITY SYSTEM (MNSCU)	RIVER OR STREAM (PERENNIAL)			
UNIVERSITY OF MN SYSTEM	LAKE, POND OR RESERVOIR			
FAIRGROUNDS	STREAM (INTERMITTENT)			
<b>CULTURAL FEATURES</b>				
STATE HISTORICAL MARKER	DRAINAGE DITCH			
HISTORIC DISTRICT	WETLAND			
HISTORIC SITE	ISLAND OR LAND			
MONUMENT	REGIONAL WATERSHED			



Population (U.S. Census 2010): 83



To request information from this document in an alternative format, call 651-366-4718 or 1-800-657-3774 (Greater Minnesota); 711 or 1-800-627-3529 (Minnesota Relay). You may also send an e-mail to ADAREquest.dot@state.mn.us. (Please request at least one week in advance.)