

# TOWNSHIP OF CANDOR

PREPARED BY THE  
MINNESOTA DEPARTMENT OF TRANSPORTATION  
OFFICE OF TRANSPORTATION SYSTEM MANAGEMENT

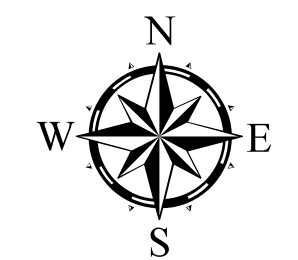
IN COOPERATION WITH  
U.S. DEPARTMENT OF TRANSPORTATION  
FEDERAL HIGHWAY ADMINISTRATION



1 in = 1,600 ft

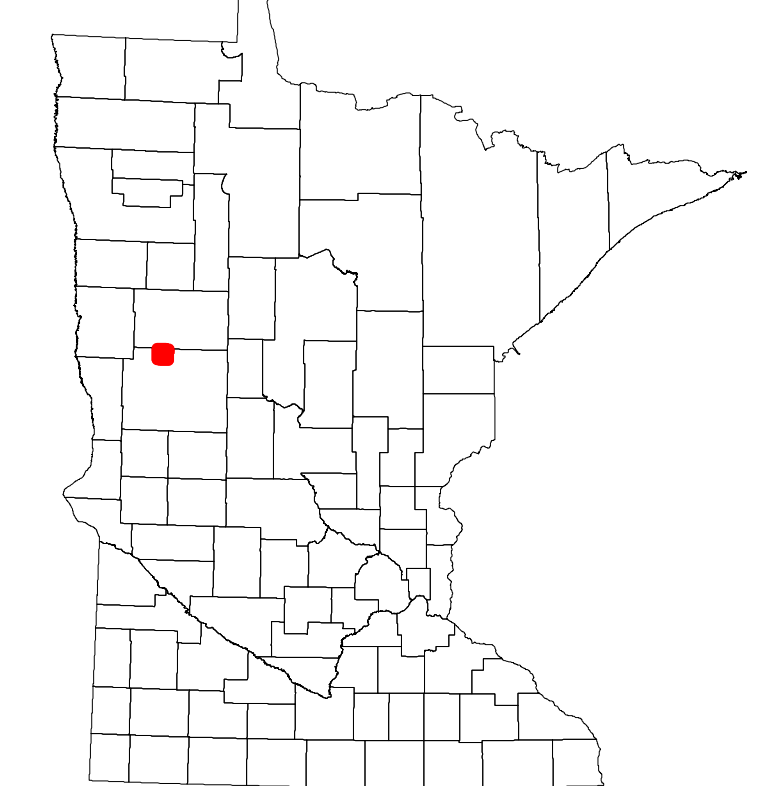
2023

Projection:  
Transverse Mercator  
NAD 1986  
UTM Zone 15

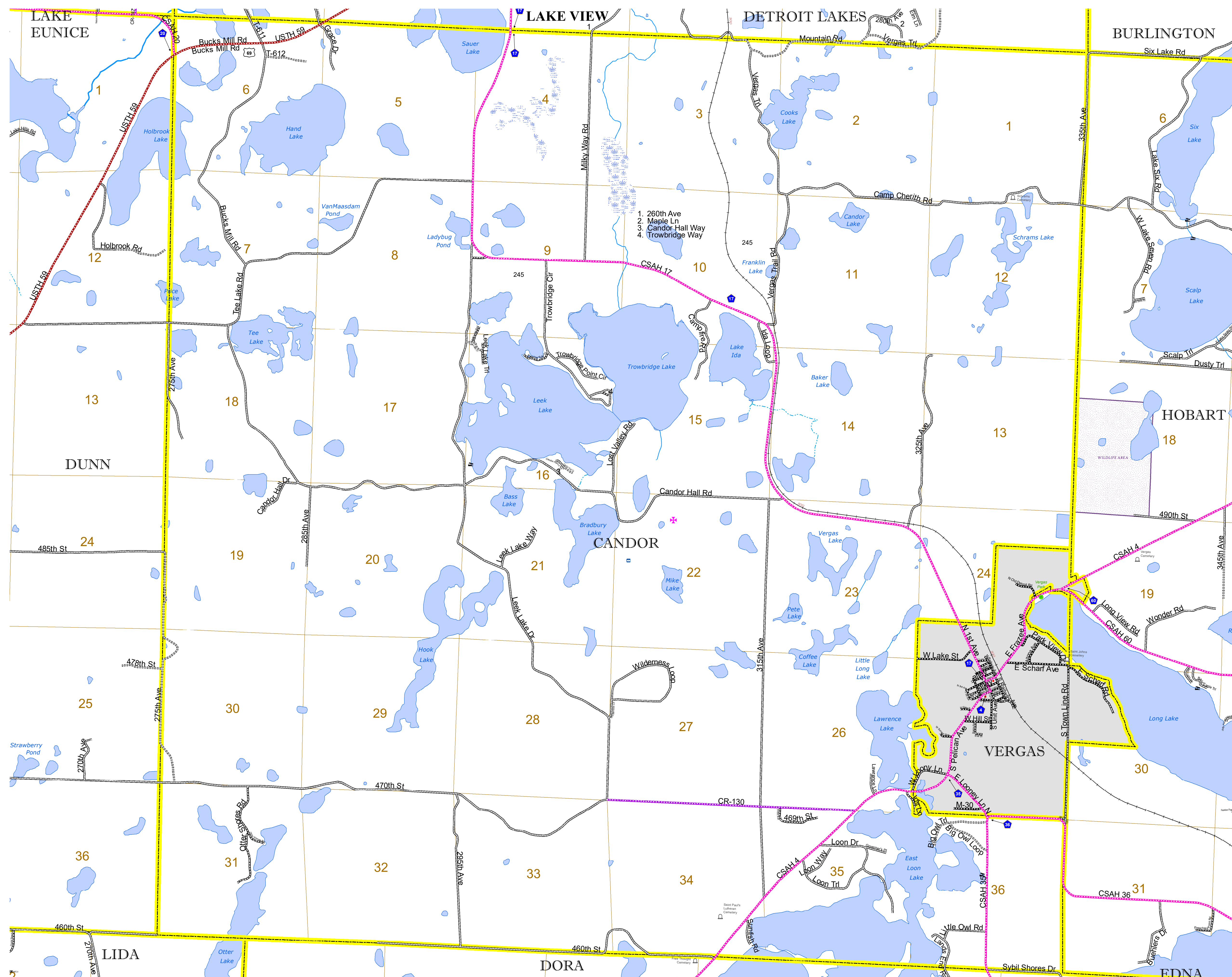


North American Datum  
of 1986

ROAD AND ROADWAY FEATURES		
INTERSTATE	CONCRETE	
US HIGHWAY	BITUMINOUS	
MN HIGHWAY	GRAVEL	
COUNTY STATE AID HIGHWAY	DIRT/UNIMPROVED	
COUNTY ROAD	OTHER	
TOWNSHIP ROAD	UNKNOWN	
UNORGANIZED TERRITORY ROAD		
OTHER ROADS		
Municipal	RAMP OR CONNECTOR	
Private	INTERSTATE EXIT	
National Monument	GREAT RIVER ROAD	
Nature Service		
National Park		
National Wildlife		
State Game		
Museum		
State Park		
Preserve		
RAILROAD AND RAILWAY FEATURES		
EMPIRE BUILDER STATION (AMTRAK)	COMMERCIAL AIRPORT	
NORTHSTAR STATION (COMMUTER)	GENERAL AIRPORT	
LIGHT RAIL	AIRSTRIP	
BLUE LINE	SEAPLANE	
GREEN LINE	AIRPORT RUNWAY	
INFRASTRUCTURE FEATURES		
LONG BRIDGE (200' OR GREATER SPAN)	TRIAL LAND	
MAJOR BRIDGE (50' TO 200' SPAN)	STATE OF MINNESOTA	
MINOR BRIDGE (5' TO 50' SPAN)	COUNTY	
DAM	MUNICIPALITY	
LOCK AND DAM	UNORGANIZED TERRITORY	
	FEDERAL ADJUSTED URBAN AREA (2014)	
	CIVIL TOWNSHIP	
	CONGRESSIONAL TOWNSHIP	
	SECTION	
	MILITARY	
	VOYAGEURS NATIONAL PARK	
	BOUNDARY WATERS CANOE AREA WILDERNESS	
	STATE PARK	
	REGIONAL PARK	
	NATIONAL FOREST	
	NATIONAL AND STATE FOREST	
	STATE FOREST	
	WILDLIFE REFUGUE AREA	
	WILDLIFE MANAGEMENT AREA	
	HYDROLOGIC FEATURES	
	RIVER OR STREAM (PERMANENT)	
	LAKE, POND OR RESERVOIR	
	STREAM (INTERMITTENT)	
	DRAINAGE DITCH	
	WETLAND	
	ISLAND OR LAND	
	REGIONAL WATERSHED	
CITY CENTERS		
STATE CAPITAL		
COUNTY SEAT		
CITY CENTER		
UNINCORPORATED COMMUNITY		
PUBLIC SERVICE FEATURES		
MNDOT OFFICE		
MNDOT TRUCK STATION		
HIGHWAY PATROL DISTRICT OFFICE		
STATE TRAVEL INFORMATION CENTER		
REST AREA (FULL SERVICE)		
REST AREA (VAULT TOILET)		
WAYSIDE (VAULT OR PVI TOILET)		
PARK AND RIDE LOT		
PORT OF ENTRY		
PUBLIC ACCESS POINT		
MN STATE COLLEGE AND UNIVERSITY SYSTEM (MNSCU)		
UNIVERSITY OF MN SYSTEM		
FAIRGROUNDS		
CULTURAL FEATURES		
STATE HISTORICAL MARKER		
HISTORIC DISTRICT		
HISTORIC SITE		
MONUMENT		



Population (U.S. Census 2010): 561



To request information from this document in an alternative format, call 651-366-4718 or 1-800-657-3774 (Greater Minnesota); 711 or 1-800-627-3529 (Minnesota Relay). You may also send an e-mail to ADarequest.dot@state.mn.us. (Please request at least one week in advance.)