

TOWNSHIP OF DANE PRAIRIE

PREPARED BY THE
MINNESOTA DEPARTMENT OF TRANSPORTATION
OFFICE OF TRANSPORTATION SYSTEM MANAGEMENT

IN COOPERATION WITH
U.S. DEPARTMENT OF TRANSPORTATION
FEDERAL HIGHWAY ADMINISTRATION

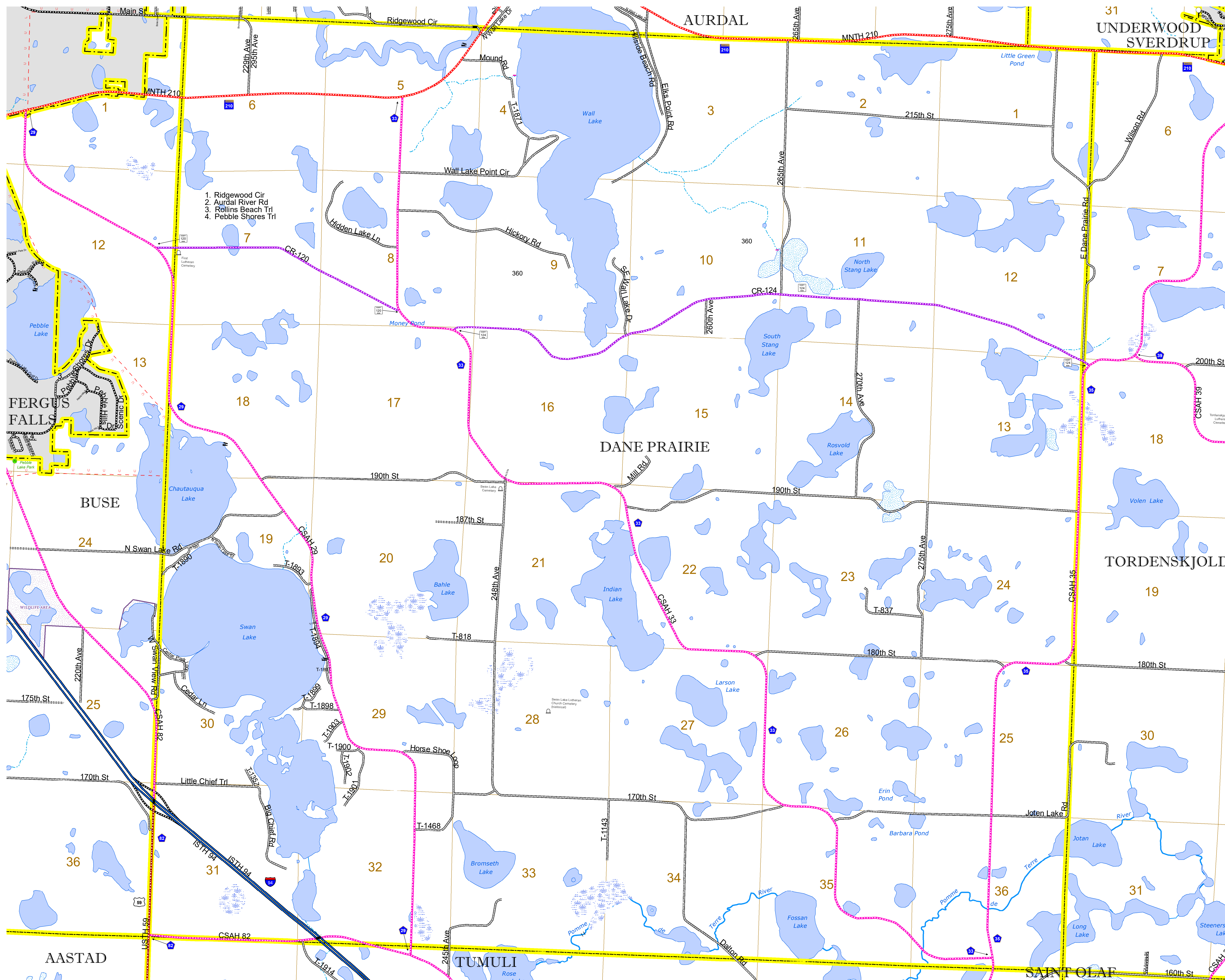


2023

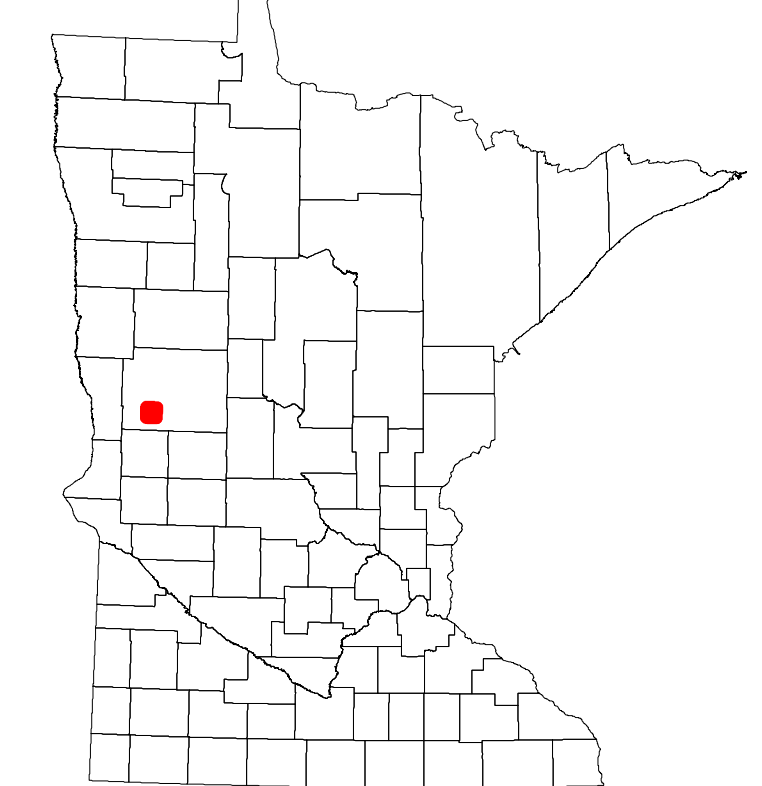
Projection:
Transverse Mercator
NAD 1986
UTM Zone 15



North American Datum
of 1986



ROAD AND ROADWAY FEATURES		BOUNDARY FEATURES	
INTERSTATE	CONCRETE	TRIBAL LAND	STATE OF MINNESOTA
US HIGHWAY	BITUMINOUS	COUNTY	MUNICIPALITY
MN HIGHWAY	GRAVEL	UNORGANIZED TERRITORY	FEDERAL ADJUSTED URBAN AREA (2014)
COUNTY STATE AID HIGHWAY	DIRT/UNIMPROVED	CIVIL TOWNSHIP	CONGRESSIONAL TOWNSHIP
COUNTY ROAD	OTHER	SECTION	MILITARY
TOWNSHIP ROAD	UNKNOWN	VOYAGEURS NATIONAL PARK	BOUNDARY WATERS CANOE AREA WILDERNESS
UNORGANIZED TERRITORY ROAD		STATE PARK	NATIONAL FOREST
OTHER ROADS		REGIONAL PARK	NATIONAL AND STATE FOREST
Municipal	RAMP OR CONNECTOR	NATIONAL TRAIL	STATE FOREST
Private	INTERSTATE EXIT	WILDLIFE REFUGEE AREA	WILDLIFE MANAGEMENT AREA
National Monument	GREAT RIVER ROAD	HYDROLOGIC FEATURES	RIVER OR STREAM (PERENNIAL)
National Park	AVIATION FEATURES	LAKE, POND OR RESERVOIR	STREAM (INTERMITTENT)
National Wildlife Refuge	GENERAL AIRPORT	DRAINAGE DITCH	WETLAND
State Park	AIRSTRIP	ISLAND OR LAND	REGIONAL WATERSHED
Preserve	SEAPLANE		
	AIRPORT RUNWAY		
RAILROAD AND RAILWAY FEATURES		CITY CENTERS	
EMPIRE BUILDER STATION (AMTRAK)	COMMERCIAL AIRPORT	STATE CAPITAL	COUNTY SEAT
NORTHSTAR STATION (COMMUTER)	GENERAL AIRPORT	CITY CENTER	UNINCORPORATED COMMUNITY
LIGHT RAIL	AIRSTRIP		
BLUE LINE	SEAPLANE	PUBLIC SERVICE FEATURES	
GREEN LINE	AIRPORT RUNWAY	MNDOT OFFICE	MNDOT TRUCK STATION
INFRASTRUCTURE FEATURES		HIGHWAY PATROL DISTRICT OFFICE	STATE TRAVEL INFORMATION CENTER
LONG BRIDGE (200' OR GREATER SPAN)	STATE OF MINNESOTA	REST AREA (FULL SERVICE)	REST AREA (VAULT TOILET)
MAJOR BRIDGE (20' TO 200' SPAN)	COUNTY	WAYSIDE (VAULT OR PIT TOILET)	PARK AND RIDE LOT
MINOR BRIDGE (5' TO 20' SPAN)	MUNICIPALITY	PORT OF ENTRY	PUBLIC ACCESS POINT
DAM	UNORGANIZED TERRITORY	MN STATE COLLEGE AND UNIVERSITY SYSTEM (MNSCU)	UNIVERSITY OF MN SYSTEM
LOCK AND DAM	FEDERAL ADJUSTED URBAN AREA (2014)	FAIRGROUNDS	
	CIVIL TOWNSHIP	CULTURAL FEATURES	
	CONGRESSIONAL TOWNSHIP	STATE HISTORICAL MARKER	HISTORIC DISTRICT
	SECTION	HISTORIC SITE	MONUMENT
	MILITARY		
	VOYAGEURS NATIONAL PARK		
	BOUNDARY WATERS CANOE AREA WILDERNESS		
	STATE PARK		
	REGIONAL PARK		
	NATIONAL FOREST		
	NATIONAL AND STATE FOREST		
	STATE FOREST		
	WILDLIFE REFUGEE AREA		
	WILDLIFE MANAGEMENT AREA		
	HYDROLOGIC FEATURES		
	RIVER OR STREAM (PERENNIAL)		
	LAKE, POND OR RESERVOIR		
	STREAM (INTERMITTENT)		
	DRAINAGE DITCH		
	WETLAND		
	ISLAND OR LAND		
	REGIONAL WATERSHED		



Population (U.S. Census 2010): 887

To request information from this document in an alternative format, call 651-366-4718 or 1-800-657-3774 (Greater Minnesota); 711 or 1-800-627-3529 (Minnesota Relay). You may also send an e-mail to ADARquest.dot@state.mn.us. (Please request at least one week in advance.)