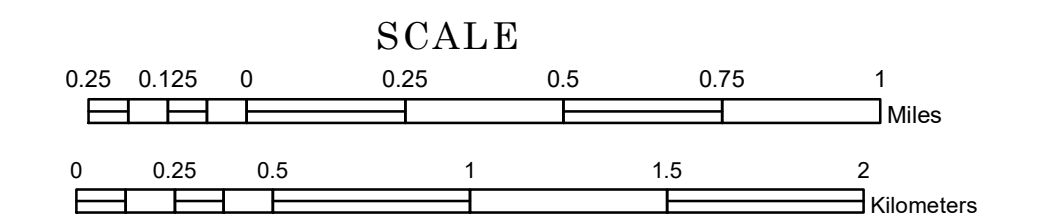


# TOWNSHIP OF EAGLE LAKE

PREPARED BY THE  
MINNESOTA DEPARTMENT OF TRANSPORTATION  
OFFICE OF TRANSPORTATION SYSTEM MANAGEMENT

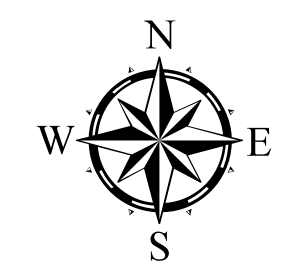
IN COOPERATION WITH  
U.S. DEPARTMENT OF TRANSPORTATION  
FEDERAL HIGHWAY ADMINISTRATION



1 in = 1,600 ft

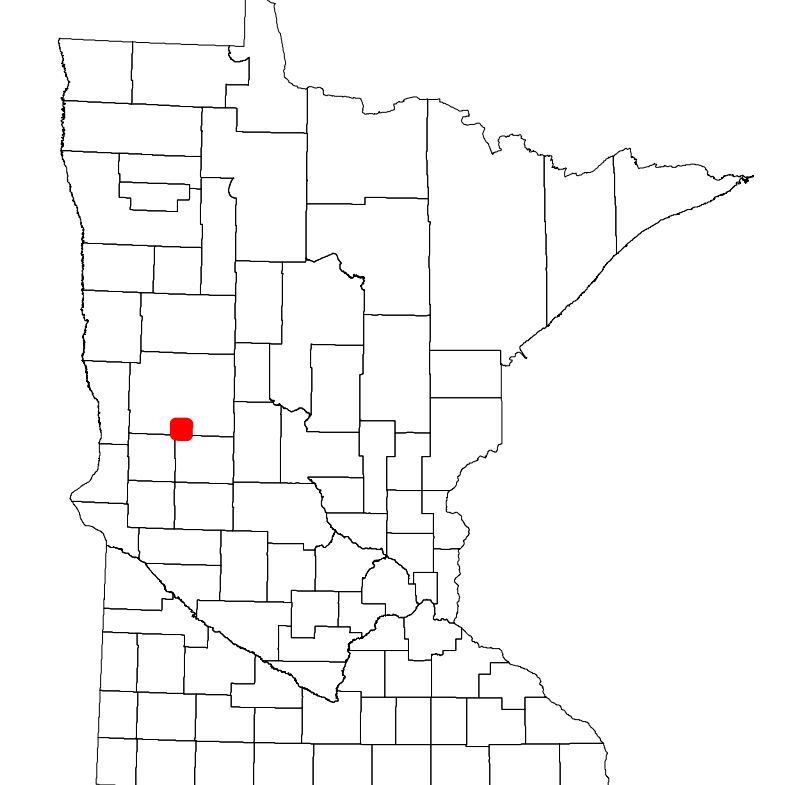
2023

Projection:  
Transverse Mercator  
NAD 1986  
UTM Zone 15

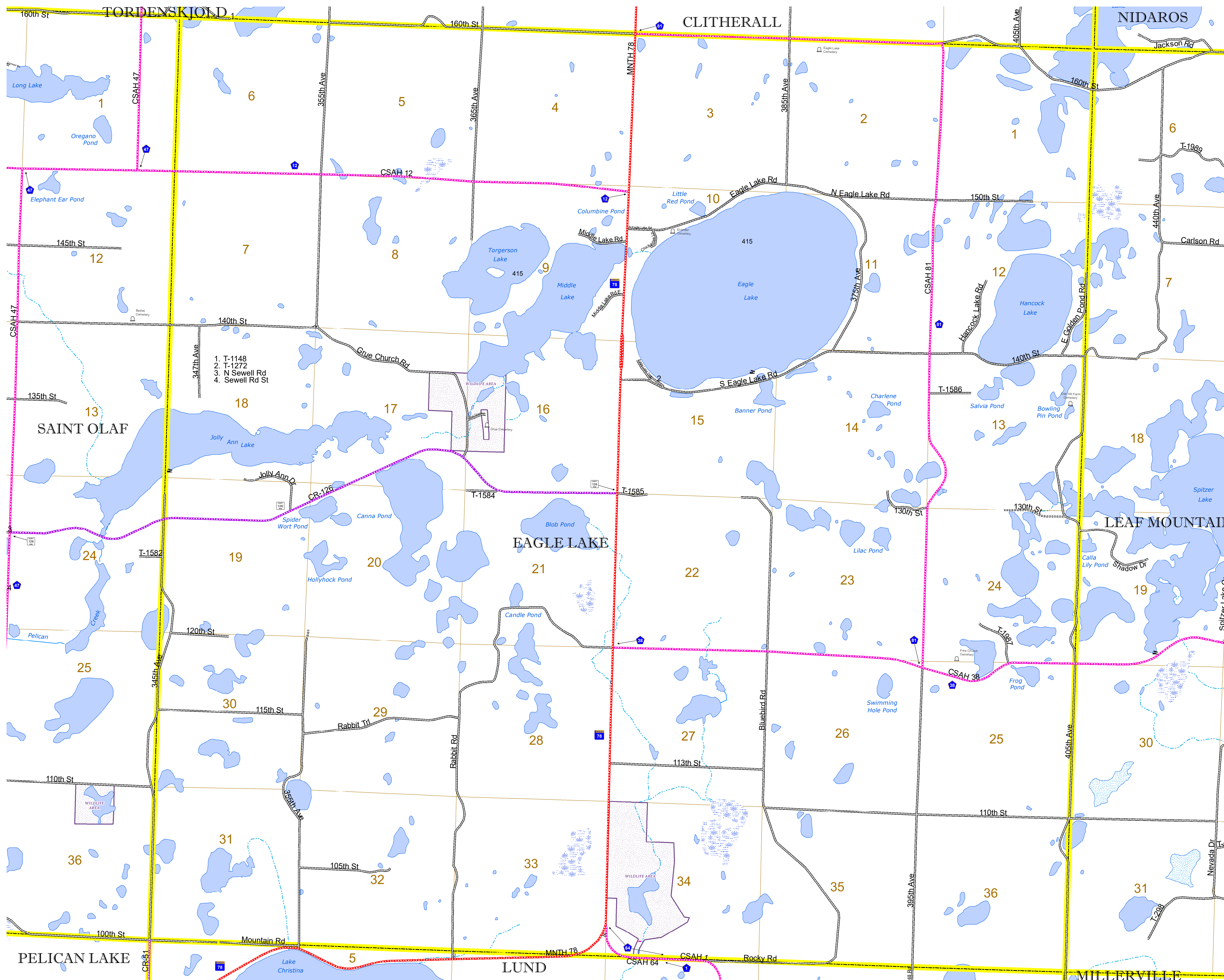


North American Datum  
of 1986

|  |                               |                                       |
|--|-------------------------------|---------------------------------------|
| INTERSTATE                                     | ROAD AND ROADWAY FEATURES     | CONCRETE                              |
| US HIGHWAY                                     |                               | BITUMINOUS                            |
| MN HIGHWAY                                     |                               | GRAVEL                                |
| COUNTY STATE AID HIGHWAY                       |                               | DIRT/UNIMPROVED                       |
| COUNTY ROAD                                    |                               | OTHER                                 |
| TOWNSHIP ROAD                                  |                               | UNKNOWN                               |
| UNORGANIZED TERRITORY ROAD                     |                               |                                       |
| OTHER ROADS                                    |                               | RAMP OR CONNECTOR                     |
| Municipal                                      |                               | National Monument                     |
| Nature Service                                 |                               | National Wildlife                     |
| Military                                       |                               | State Park                            |
|  |                               | Preserve                              |
|  | RAILROAD AND RAILWAY FEATURES | AVIATION FEATURES                     |
| EMPIRE BUILDER STATION (AMTRAK)                |                               | COMMERCIAL AIRPORT                    |
| NORTHSTAR STATION (COMMERCE)                   |                               | GENERAL AIRPORT                       |
|  |                               | AIRSTRIP                              |
| LIGHT RAIL                                     |                               | SEAPLANE                              |
| BLUE LINE                                      |                               | AIRPORT RUNWAY                        |
| GREEN LINE                                     |                               |                                       |
|  | INFRASTRUCTURE FEATURES       | BOUNDARY FEATURES                     |
| LONG BRIDGE (200' OR GREATER SPAN)             |                               | TRIBAL LAND                           |
| MAJOR BRIDGE (20' TO 200' SPAN)                |                               | STATE OF MINNESOTA                    |
| MINOR BRIDGE (5' TO 20' SPAN)                  |                               | COUNTY                                |
| DAM  |                               | MUNICIPALITY                          |
| LOCK AND DAM                                   |                               | UNORGANIZED TERRITORY                 |
|  |                               | FEDERAL ADJUSTED URBAN AREA (2014)    |
|  |                               | CIVIL TOWNSHIP                        |
| STATE CAPITAL                                  |                               | CONGRESSIONAL TOWNSHIP                |
| COUNTY SEAT                                    |                               | SECTION                               |
| CITY CENTER                                    |                               | MILITARY                              |
| UNINCORPORATED COMMUNITY                       |                               | VOYAGEURS NATIONAL PARK               |
|  | PUBLIC SERVICE FEATURES       | BOUNDARY WATERS CANOE AREA WILDERNESS |
| MNDOT OFFICE                                   |                               | STATE PARK                            |
| MNDOT TRUCK STATION                            |                               | REGIONAL PARK                         |
| HIGHWAY PATROL DISTRICT OFFICE                 |                               | NATIONAL FOREST                       |
| STATE TRAVEL INFORMATION CENTER                |                               | NATIONAL AND STATE FOREST             |
| REST AREA (FULL SERVICE)                       |                               | STATE FOREST                          |
| REST AREA (VAULT TOILET)                       |                               | NATIONAL TRAIL                        |
| WAYSIDE (VAULT OR PIT TOILET)                  |                               | WILDLIFE REFUGE AREA                  |
| PARK AND RIDE LOT                              |                               | WILDLIFE MANAGEMENT AREA              |
| PORT OF ENTRY                                  |                               | HYDROLOGIC FEATURES                   |
| PUBLIC ACCESS POINT                            |                               | RIVER OR STREAM (PERMANENT)           |
| MN STATE COLLEGE AND UNIVERSITY SYSTEM (MNSCU) |                               | LAKE, POND OR RESERVOIR               |
| UNIVERSITY OF MN SYSTEM                        |                               | STREAM (INTERMITTENT)                 |
| FARMGROUNDS                                    |                               | DRAINAGE DITCH                        |
|  | CULTURAL FEATURES             | WETLAND                               |
| STATE HISTORICAL MARKER                        |                               | ISLAND OR LAND                        |
| HISTORIC DISTRICT                              |                               | REGIONAL WATERSHED                    |
| HISTORIC SITE                                  |                               |                                       |
| MONUMENT                                       |                               |                                       |



Population (U.S. Census 2010): 378



To request information from this document in an alternative format, call 651-366-4718 or 1-800-657-3774 (Greater Minnesota); 711 or 1-800-627-3529 (Minnesota Relay). You may also send an e-mail to ADRequest.dot@state.mn.us. (Please request at least one week in advance.)