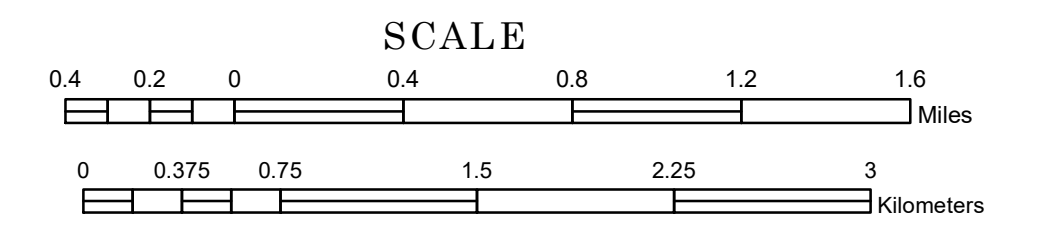


TOWNSHIP OF OGEMA

PREPARED BY THE
MINNESOTA DEPARTMENT OF TRANSPORTATION
OFFICE OF TRANSPORTATION SYSTEM MANAGEMENT

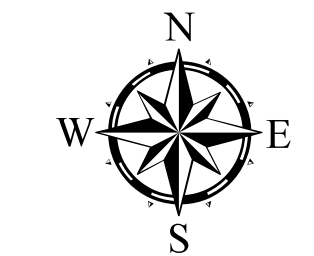
IN COOPERATION WITH
U.S. DEPARTMENT OF TRANSPORTATION
FEDERAL HIGHWAY ADMINISTRATION



1 in = 2,400 ft

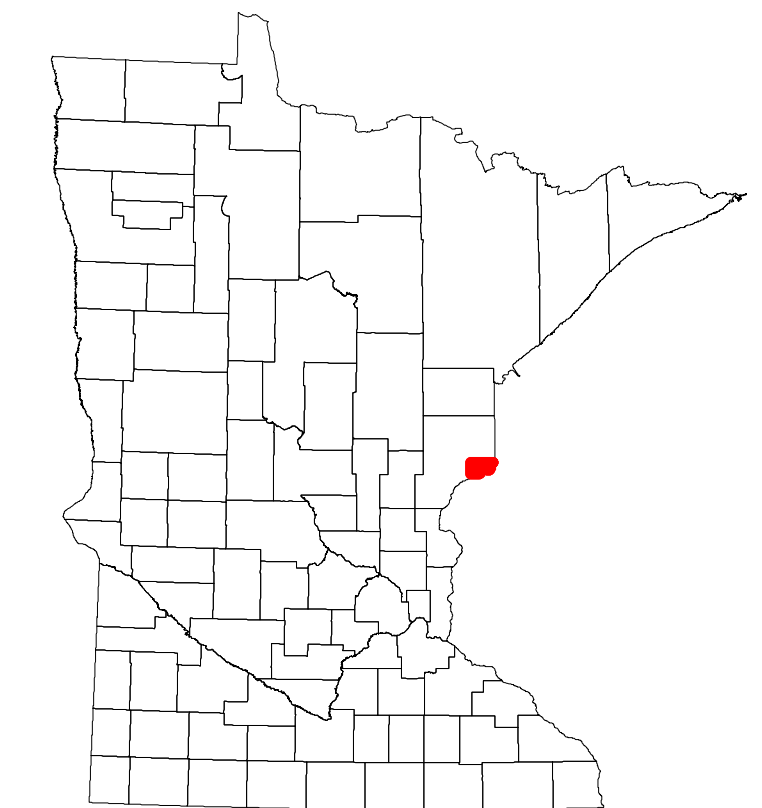
2022

Projection:
Transverse Mercator
NAD 1986
UTM Zone 15

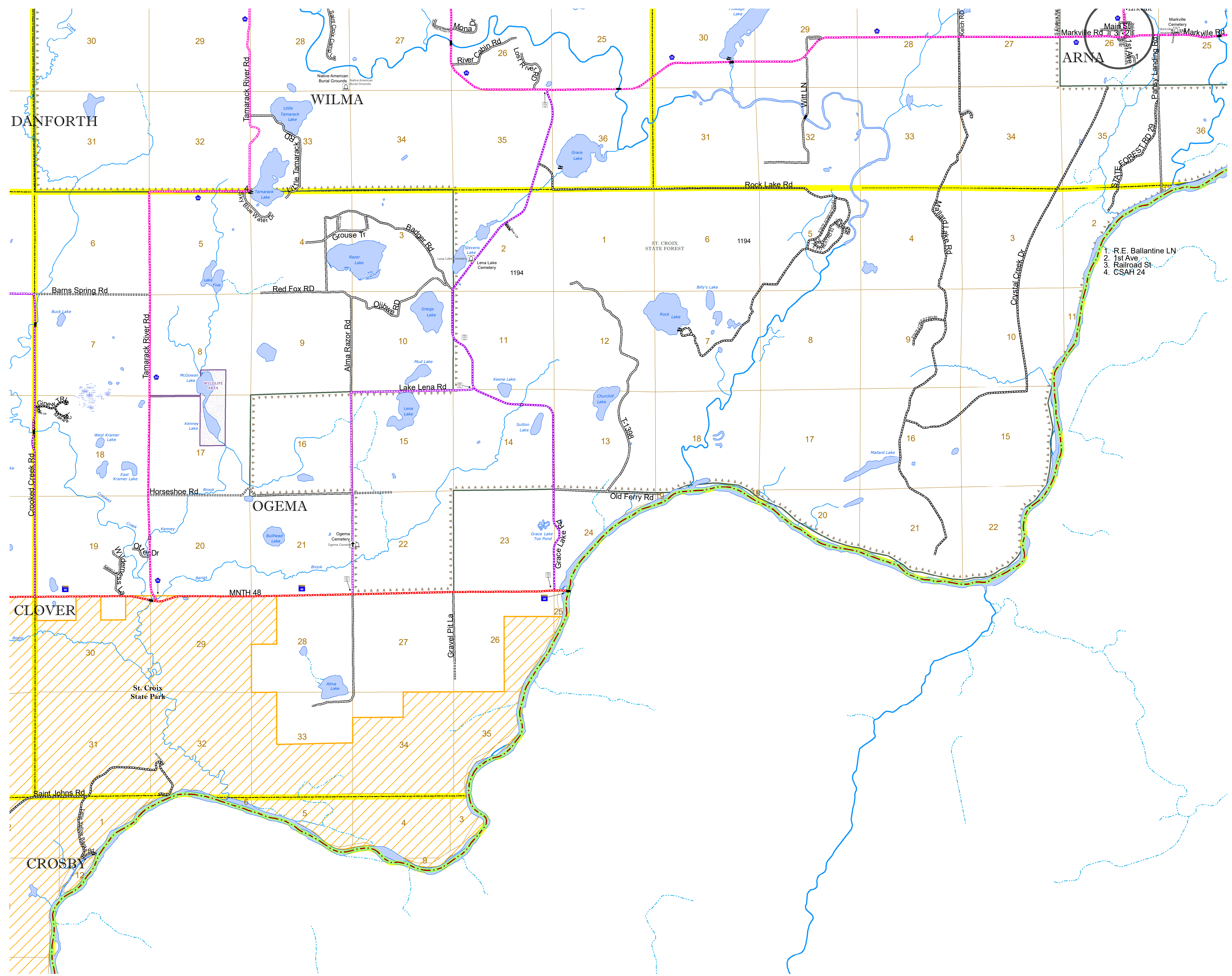


North American Datum
of 1986

ROAD AND ROADWAY FEATURES		BOUNDARY FEATURES	
INTERSTATE	CONCRETE	TRIBAL LAND	STATE OF MINNESOTA
US HIGHWAY	BITUMINOUS	COUNTY	MUNICIPALITY
MN HIGHWAY	GRAVEL	UNINCORPORATED TOWNSHIP	CIVIL TOWNSHIP
COUNTY STATE AID HIGHWAY	DIRT/UNIMPROVED	CONGRESSIONAL TOWNSHIP	SECTION
COUNTY ROAD	OTHER	MILITARY	VOYAGEURS NATIONAL PARK
TOWNSHIP ROAD	UNKNOWN	BOUNDRARY WATERS CANOE AREA WILDERNESS	STATE PARK
UNORGANIZED TERRITORY ROAD		REGIONAL PARK	NATIONAL FOREST
OTHER ROADS		NATIONAL AND STATE FOREST	STATE FOREST
Municipal		NATIONAL TRAIL	NATIONAL TRAIL
Private		WILDLIFE REFUGE AREA	WILDLIFE REFUGE AREA
National Monument		WILDLIFE MANAGEMENT AREA	WILDLIFE MANAGEMENT AREA
Nature Service		HYDROLOGIC FEATURES	HYDROLOGIC FEATURES
National Park		RIVER OR STREAM (PERMANENT)	RIVER OR STREAM (PERMANENT)
National Wildlife Refuge		LAKE, POND OR RESERVOIR	LAKE, POND OR RESERVOIR
State Park		STREAM (INTERMITTENT)	STREAM (INTERMITTENT)
Preserve		DRAINAGE DITCH	DRAINAGE DITCH
		WETLAND	WETLAND
		ISLAND OR LAND	ISLAND OR LAND
		REGIONAL WATERSHED	REGIONAL WATERSHED



Population (U.S. Census 2010): 352



To request information from this document in an alternative format, call 651-366-4718 or 1-800-657-3774 (Greater Minnesota); 711 or 1-800-627-3529 (Minnesota Relay). You may also send an e-mail to ADarequest.dot@state.mn.us. (Please request at least one week in advance.)