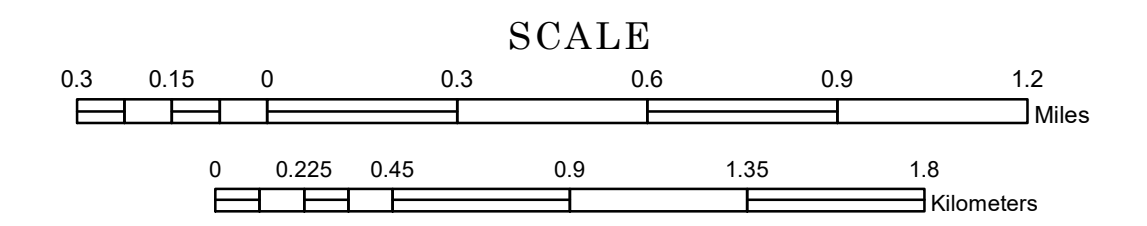


TOWNSHIP OF JOHNSON

PREPARED BY THE
MINNESOTA DEPARTMENT OF TRANSPORTATION
OFFICE OF TRANSPORTATION SYSTEM MANAGEMENT

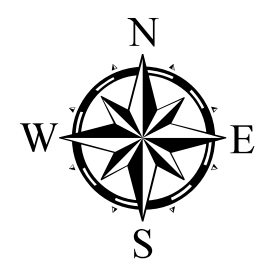
IN COOPERATION WITH
U.S. DEPARTMENT OF TRANSPORTATION
FEDERAL HIGHWAY ADMINISTRATION



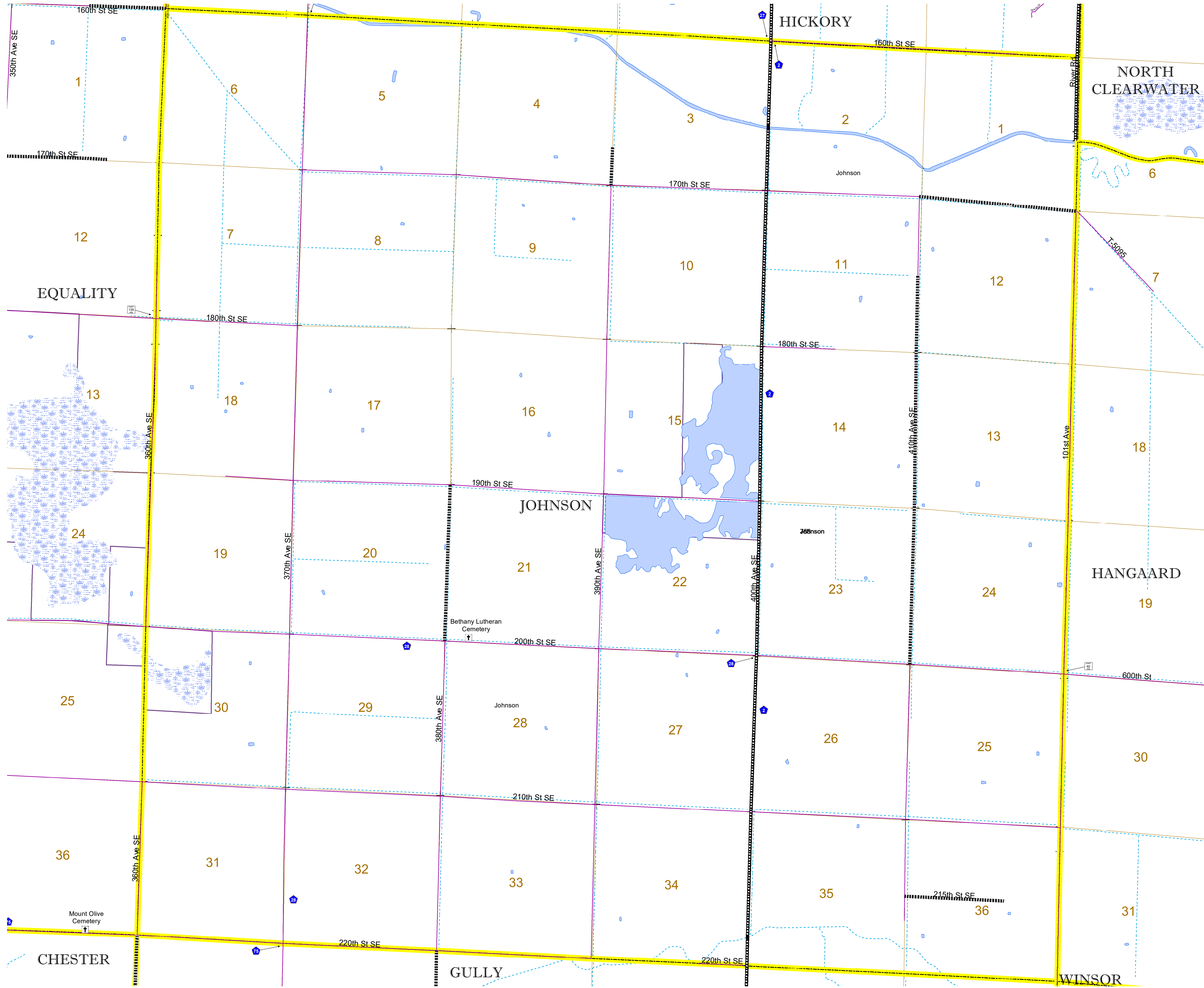
1 in = 1,600 ft

2023

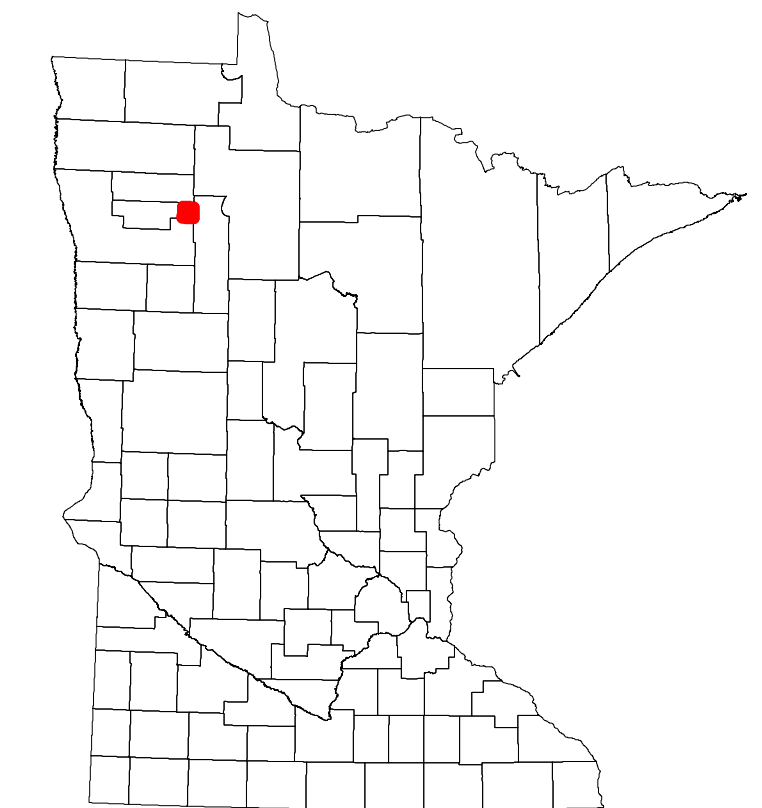
Projection:
Transverse Mercator
NAD 1986
UTM Zone 15



North American Datum
of 1986



ROAD AND ROADWAY FEATURES		AVIATION FEATURES	
INTERSTATE	CONCRETE	COMMERCIAL AIRPORT	GENERAL AIRPORT
US HIGHWAY	BITUMINOUS	AIRSTRIP	SEAPLANE
MN HIGHWAY	GRAVEL	AIRPORT RUNWAY	BOUNDARY FEATURES
COUNTY STATE AID HIGHWAY	DIRT/UNIMPROVED	TRIAL LAND	TRIBAL LAND
COUNTY ROAD	OTHER	STATE OF MINNESOTA	COUNTY
TOWNSHIP ROAD	UNKNOWN	MUNICIPALITY	MUNICIPALITY
UNORGANIZED TERRITORY ROAD	RAMP OR CONNECTOR	UNINCORPORATED COMMUNITY	CIVIL TOWNSHIP
OTHER ROADS	INTERSTATE EXIT	CONGRESSIONAL TOWNSHIP	SECTION
Municipal	GREAT RIVER ROAD	MILITARY	MILITARY
Private	RAILROAD AND RAILWAY FEATURES	VOYAGEURS NATIONAL PARK	VOYAGEURS NATIONAL PARK
National Monument	EMPIRE BUILDER STATION (AMTRAK)	BOUNDARY WATERS GANOE AREA WILDERNESS	STATE PARK
State Forest	NORTHSTAR STATION (COMPUTER)	NATIONAL FOREST	NATIONAL FOREST
National Wildlife Refuge	LIGHT RAIL	REGIONAL PARK	REGIONAL PARK
State Park	BLUE LINE	NATIONAL AND STATE FOREST	NATIONAL AND STATE FOREST
Present	GREEN LINE	STATE FOREST	STATE FOREST
	INFRASTRUCTURE FEATURES	NATIONAL TRAIL	NATIONAL TRAIL
	LONG BRIDGE (200' OR GREATER SPAN)	WILDLIFE REFUGE AREA	WILDLIFE REFUGE AREA
	MAJOR BRIDGE (20' TO 200' SPAN)	WILDLIFE MANAGEMENT AREA	WILDLIFE MANAGEMENT AREA
	MINOR BRIDGE (5' TO 20' SPAN)	HYDROLOGIC FEATURES	HYDROLOGIC FEATURES
	DAM	RIVER OR STREAM (PERMANENT)	RIVER OR STREAM (PERMANENT)
	LOCK AND DAM	LAKE, POND OR RESERVOIR	LAKE, POND OR RESERVOIR
		STREAM (INTERMITTENT)	STREAM (INTERMITTENT)
		DRAINAGE DITCH	DRAINAGE DITCH
		WETLAND	WETLAND
		ISLAND OR LAND	ISLAND OR LAND
		REGIONAL WATERSHED	REGIONAL WATERSHED



Population (U.S. Census 2010): 51

To request information from this document in an alternative format, call 651-366-4718 or 1-800-657-3774 (Greater Minnesota); 711 or 1-800-627-3529 (Minnesota Relay). You may also send an e-mail to ADARquest.dot@state.mn.us. (Please request at least one week in advance.)