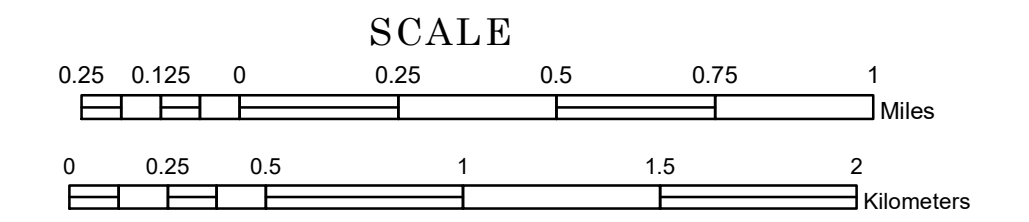


TOWNSHIP OF NORA

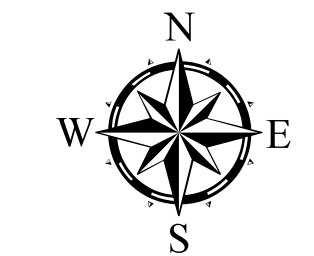
PREPARED BY THE
MINNESOTA DEPARTMENT OF TRANSPORTATION
OFFICE OF TRANSPORTATION SYSTEM MANAGEMENT

IN COOPERATION WITH
U.S. DEPARTMENT OF TRANSPORTATION
FEDERAL HIGHWAY ADMINISTRATION



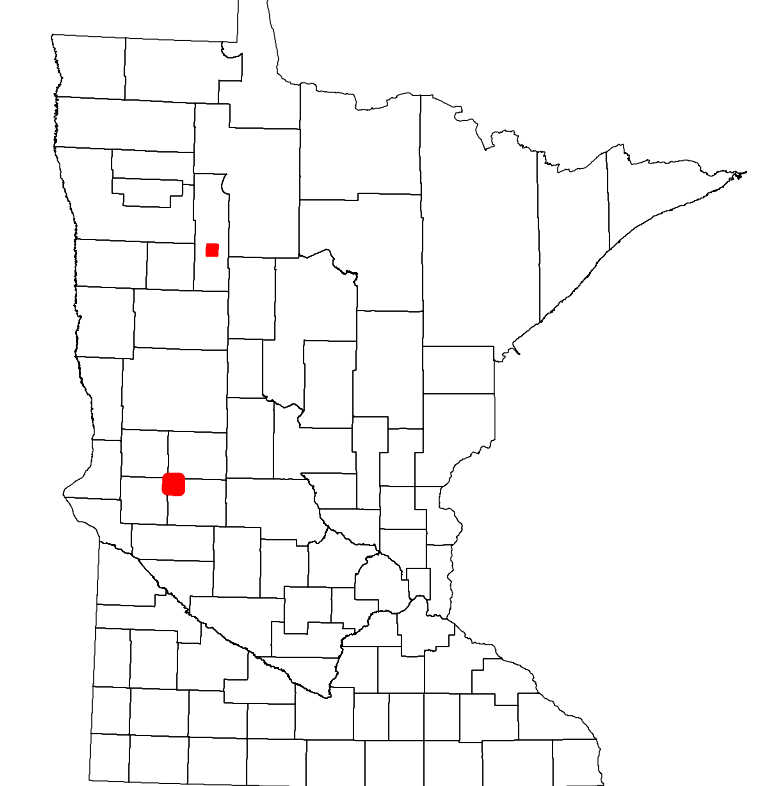
2022

Projection:
Transverse Mercator
NAD 1986
UTM Zone 15

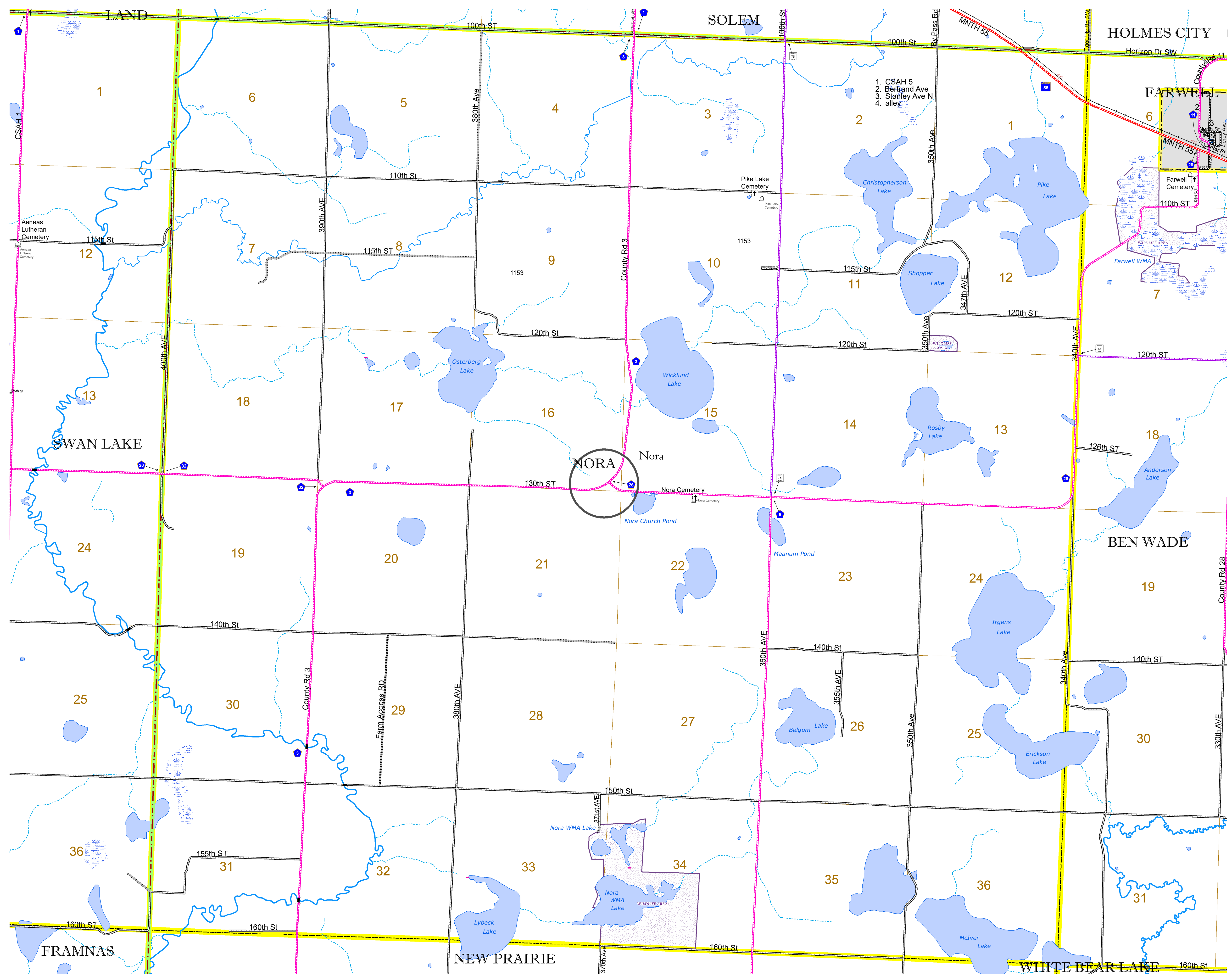


North American Datum
of 1986

ROAD AND ROADWAY FEATURES		BOUNDARY FEATURES	
INTERSTATE	CONCRETE	TRIBAL LAND	STATE OF MINNESOTA
US HIGHWAY	BITUMINOUS	COUNTY	MUNICIPALITY
MN HIGHWAY	GRAVEL	UNINCORPORATED TOWNSHIP	CIVIL TOWNSHIP
COUNTY STATE AID HIGHWAY	DIRT/UNIMPROVED	FEDERAL ADJUSTED URBAN AREA (2014)	CONGRESSIONAL TOWNSHIP
COUNTY ROAD	OTHER	CIVIL TOWNSHIP	SECTION
TOWNSHIP ROAD	UNKNOWN	MILITARY	VOYAGEURS NATIONAL PARK
UNORGANIZED TERRITORY ROAD		AVIATION FEATURES	BOUNDARY WATERS NATIONAL PARK
OTHER ROADS		GENERAL AIRPORT	STATE PARK
Municipal	RAMP OR CONNECTOR	AIRSTRIP	REGIONAL PARK
Private	INTERSTATE EXIT	SEAPLANE	NATIONAL FOREST
National Monument		AIRPORT RUNWAY	NATIONAL AND STATE FOREST
National Wildlife Refuge			STATE FOREST
State Park			WILDLIFE REFUGUE AREA
Preserve			WILDLIFE MANAGEMENT AREA
			HYDROLOGIC FEATURES
			RIVER OR STREAM (PERMANENT)
			LAKE, POND OR RESERVOIR
			STREAM (INTERMITTENT)
			DRAINAGE DITCH
			WETLAND
			ISLAND OR LAND
			REGIONAL WATERSHED



Population (U.S. Census 2010): 205



To request information from this document in an alternative format, call 651-366-4718 or 1-800-657-3774 (Greater Minnesota); 711 or 1-800-627-3529 (Minnesota Relay). You may also send an e-mail to ADRequest.dot@state.mn.us. (Please request at least one week in advance.)