

TOWNSHIP OF THREE LAKES

PREPARED BY THE
MINNESOTA DEPARTMENT OF TRANSPORTATION
OFFICE OF TRANSPORTATION SYSTEM MANAGEMENT

IN COOPERATION WITH
U.S. DEPARTMENT OF TRANSPORTATION
FEDERAL HIGHWAY ADMINISTRATION



1 in = 1,600 ft

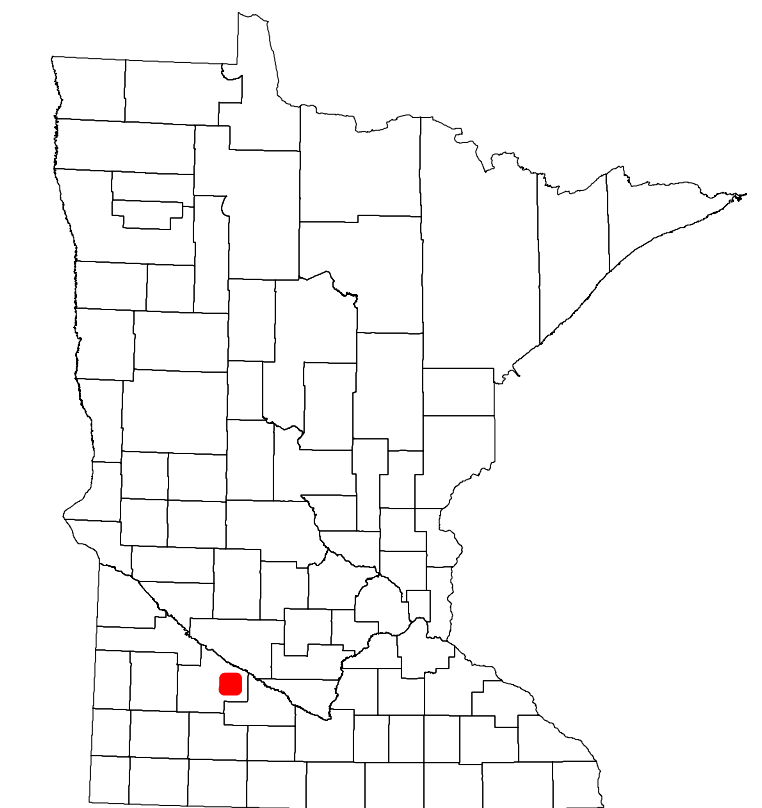
2022

Projection:
Transverse Mercator
NAD 1986
UTM Zone 15

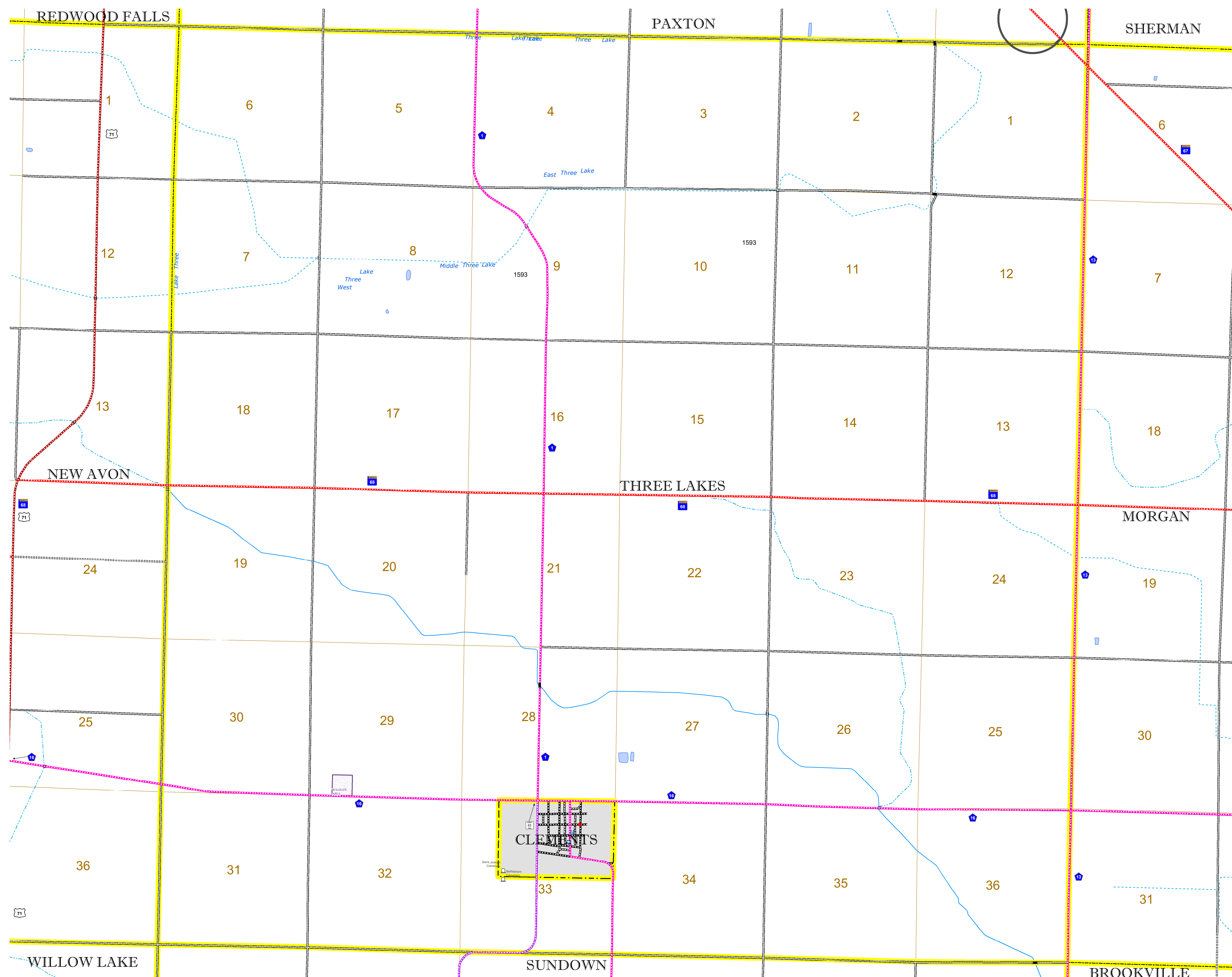


North American Datum
of 1986

ROAD AND ROADWAY FEATURES		AVIATION FEATURES	
INTERSTATE	CONCRETE	COMMERCIAL AIRPORT	GENERAL AIRPORT
US HIGHWAY	BITUMINOUS	AIRSTRIP	SEAPLANE
MN HIGHWAY	GRAVEL	AIRPORT RUNWAY	
COUNTY STATE AID HIGHWAY	DIRT/UNIMPROVED		
COUNTY ROAD	OTHER		
TOWNSHIP ROAD	UNKNOWN		
UNORGANIZED TERRITORY ROAD			
OTHER ROADS			
Municipal	Private	National Monument	State Forest
Nature Service	National Park	National Wildlife	State Game
Military	National Forest	State Park	Preserve
RAILROAD AND RAILWAY FEATURES		BOUNDARY FEATURES	
EMPIRE BUILDER STATION (AMTRAK)	COMMERCIAL AIRPORT	TRIBAL LAND	STATE OF MINNESOTA
NORTHSTAR STATION (COMMUTER)	GENERAL AIRPORT	COUNTY	MUNICIPALITY
LIGHT RAIL	AIRSTRIP	UNORGANIZED TERRITORY	FEDERAL ADJUSTED URBAN AREA (2014)
BLUE LINE	SEAPLANE	CIVIL TOWNSHIP	CONGRESSIONAL TOWNSHIP
GREEN LINE	AIRPORT RUNWAY	SECTION	MILITARY
INFRASTRUCTURE FEATURES		HYDROLOGIC FEATURES	
LONG BRIDGE (200' OR GREATER SPAN)	COMMERCIAL AIRPORT	STATE HISTORICAL MARKER	HISTORIC DISTRICT
MAJOR BRIDGE (20' TO 200' SPAN)	GENERAL AIRPORT	HISTORIC SITE	MONUMENT
MINOR BRIDGE (5' TO 20' SPAN)	AIRSTRIP		
DAM	SEAPLANE		
LOCK AND DAM	AIRPORT RUNWAY		
CITY CENTERS		HYDROLOGIC FEATURES	
STATE CAPITAL	COMMERCIAL AIRPORT	STATE HISTORICAL MARKER	HISTORIC DISTRICT
COUNTY SEAT	GENERAL AIRPORT	HISTORIC SITE	MONUMENT
CITY CENTER	AIRSTRIP		
UNINCORPORATED COMMUNITY	SEAPLANE		
	AIRPORT RUNWAY		
PUBLIC SERVICE FEATURES		HYDROLOGIC FEATURES	
MNDOT OFFICE	COMMERCIAL AIRPORT	STATE HISTORICAL MARKER	HISTORIC DISTRICT
MNDOT TRUCK STATION	GENERAL AIRPORT	HISTORIC SITE	MONUMENT
HIGHWAY PATROL DISTRICT OFFICE	AIRSTRIP		
STATE TRAVEL INFORMATION CENTER	SEAPLANE		
REST AREA (FULL SERVICE)	AIRPORT RUNWAY		
REST AREA (VAULT TOILET)			
WAYSIDE (VAULT OR PIT TOILET)			
PARK AND RIDE LOT			
PORT OF ENTRY			
PUBLIC ACCESS POINT			
MN STATE COLLEGE AND UNIVERSITY SYSTEM (MNSCU)			
UNIVERSITY OF MN SYSTEM			
FAIRGROUNDS			
CULTURAL FEATURES		HYDROLOGIC FEATURES	
STATE HISTORICAL MARKER	COMMERCIAL AIRPORT	STATE HISTORICAL MARKER	HISTORIC DISTRICT
HISTORIC DISTRICT	GENERAL AIRPORT	HISTORIC SITE	MONUMENT
HISTORIC SITE	AIRSTRIP		
MONUMENT	SEAPLANE		
	AIRPORT RUNWAY		



Population (U.S. Census 2010): 194



To request information from this document in an alternative format, call 651-366-4718 or 1-800-657-3774 (Greater Minnesota); 711 or 1-800-627-3529 (Minnesota Relay). You may also send an e-mail to ADRequest.dot@state.mn.us. (Please request at least one week in advance.)